

# THIS IS NOT A CERTIFICATION

JONES COUNTY ENGINEER'S OFFICE, 19501 HWY. 64, ANAMOSA, IOWA, 52205 (319)462-3785

## UNITED STATES PUBLIC LAND SURVEY CORNER CERTIFICATE

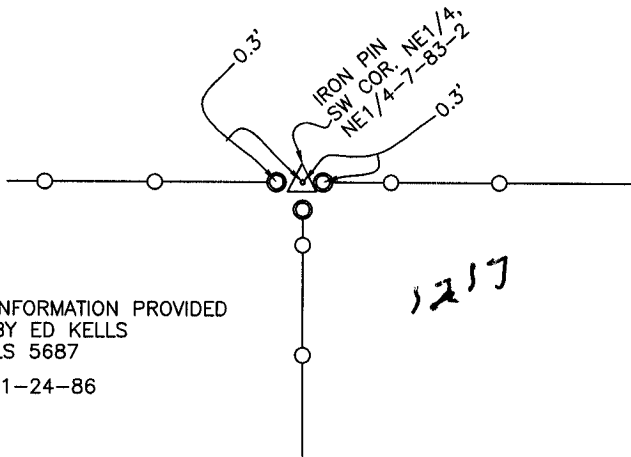
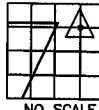
LAND SURVEY MONUMENTS SITUATED IN SECTION 7, TOWNSHIP 83  
NORTH, RANGE 2 WEST OF THE 5TH P.M., JONES COUNTY, IOWA

### CORNERS TO BE INDEXED

CORNER SECTION TOWNSHIP RANGE  
SW.COR-NE-NE 7 83N 2W

OFFICE FILE NO.

83207i\_122303.jpg



INFORMATION PROVIDED  
BY ED KELLS  
LS 5687  
1-24-86

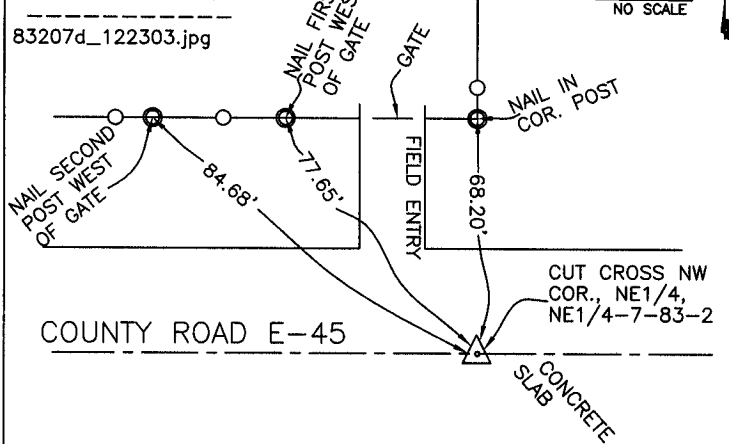
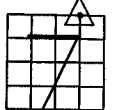
PREVIOUSLY RECORDED IN BOOK \_\_\_\_\_, PAGE \_\_\_\_\_  
MONUMENT DESCRIPTION AND HOW ESTABLISHED INFORMATION  
AS INDICATED PROVIDED BY ED KELLS LS 5687, SOUTHWEST CORNER  
OF NORTHEAST QUARTER OF NORTHEAST QUARTER OF SECTION 7,  
TOWNSHIP 83 NORTH, RANGE 2 WEST OF THE 5TH PRINCIPAL MERIDIAN,  
JONES COUNTY, IOWA.

### CORNERS TO BE INDEXED

CORNER SECTION TOWNSHIP RANGE  
NW.COR-NE-NE 7 83N 2W

OFFICE FILE NO.

83207d\_122303.jpg



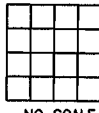
INFORMATION PROVIDED BY  
ED KELLS LS 5687  
1-24-86

PREVIOUSLY RECORDED IN BOOK \_\_\_\_\_, PAGE \_\_\_\_\_  
MONUMENT DESCRIPTION AND HOW ESTABLISHED INFORMATION  
AS SHOWN PROVIDED BY ED KELLS LS 5687. CUT CROSS SHOWN AS  
THE NORTHWEST CORNER OF THE NORTHEAST QUARTER OF THE  
NORTHEAST QUARTER OF SECTION 7, TOWNSHIP 83 NORTH, RANGE  
2 WEST OF THE 5TH PRINCIPAL MERIDIAN, JONES COUNTY, IOWA.

### CORNERS TO BE INDEXED

CORNER SECTION TOWNSHIP RANGE

OFFICE FILE NO.

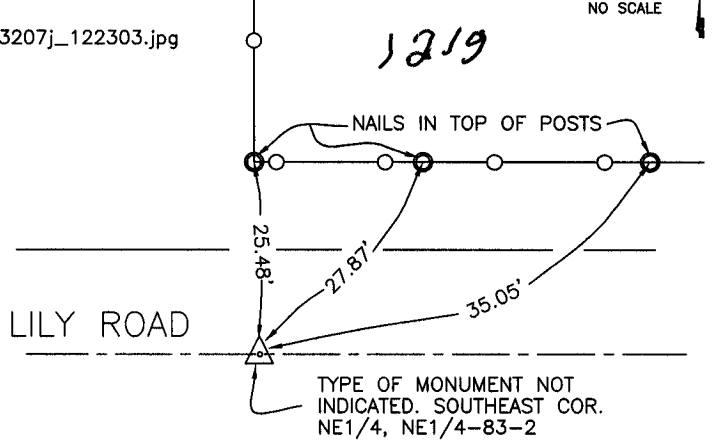
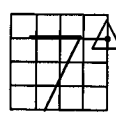


### CORNERS TO BE INDEXED

CORNER SECTION TOWNSHIP RANGE  
SE.COR-NE-NE 7 83N 2W

OFFICE FILE NO.

83207j\_122303.jpg



INFORMATION PROVIDED BY  
ED KELLS LS 5687  
1-24-86

PREVIOUSLY RECORDED IN BOOK \_\_\_\_\_, PAGE \_\_\_\_\_  
MONUMENT DESCRIPTION AND HOW ESTABLISHED INFORMATION  
AS SHOWN PROVIDED BY ED KELLS, LS 5687. TYPE OF MONUMENT  
NOT IDENTIFIED. SOUTHEAST CORNER OF THE NORTHEAST QUARTER OF  
THE NORTHEAST QUARTER OF SECTION 7, TOWNSHIP 83 NORTH,  
RANGE 2 WEST OF THE 5TH PRINCIPAL MERIDIAN, JONES COUNTY, IOWA.

~~I hereby declare that this plat, survey or report was made by me or under my direct personal supervision and that I am a duly registered Land Surveyor under the laws of the State of Iowa.~~

Signed:

SEAL

JONES COUNTY  
ENGINEER'S OFFICE

19501 HWY. 64,  
ANAMOSA, IOWA,  
52205 (319)462-3785