

COPY

Jones County Marie Krutzfield Recorder
Fee Book 2012 2189
07/31/2012 @0932AM # Pages 1
ZSC SEC COR CERT
Total Fees: \$7.00

PREPARED BY: VJ ENGINEERING, DAVID M. WEST, P.L.S., 2570 HOLIDAY ROAD STE. 10, CORALVILLE, IOWA 52241, (319) 338-4939

UNITED STATES PUBLIC LAND SURVEY CORNER CERTIFICATE OF

LAND SURVEY MONUMENT SITUATED IN SECTION 7, TOWNSHIP 83 NORTH, RANGE 2 WEST,
OF THE FIFTH PRINCIPAL MERIDIAN, JONES COUNTY, IOWA.
PREVIOUSLY RECORDED IN NONE COUNTY RECORDER'S OFFICE.

MONUMENT DESCRIPTION AND REMARKS:

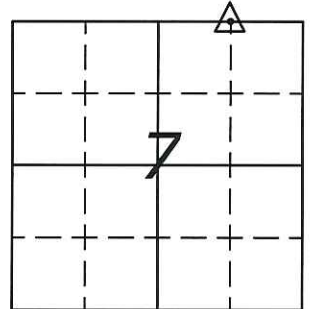
NORTHEAST CORNER OF THE NORTHWEST 1/4 OF THE NORTHEAST 1/4 OF SECTION 7-T83N-R2W SET MAG NAIL IN CENTERLINE JOINT AT THE INTERSECTION OF EXISTING "X" IN PAVEMENT. REFERENCE TO THIS CORNER WAS MADE ON A RETRACEMENT PLAT OF SURVEY RECORDED IN PLAT BOOK 'P' AT PAGE 29. NO OTHER REFERENCES FOR THIS CORNER WERE DISCOVERED. THE CORNER WAS CONSISTENT WITH THE EXISTING RECORD AND ACCEPTED AS FOUND. THERE IS NO CERTIFICATE ON FILE FOR THIS CORNER.

DISTANCES ARE PLUMB CHAIN UNLESS OTHERWISE NOTED.

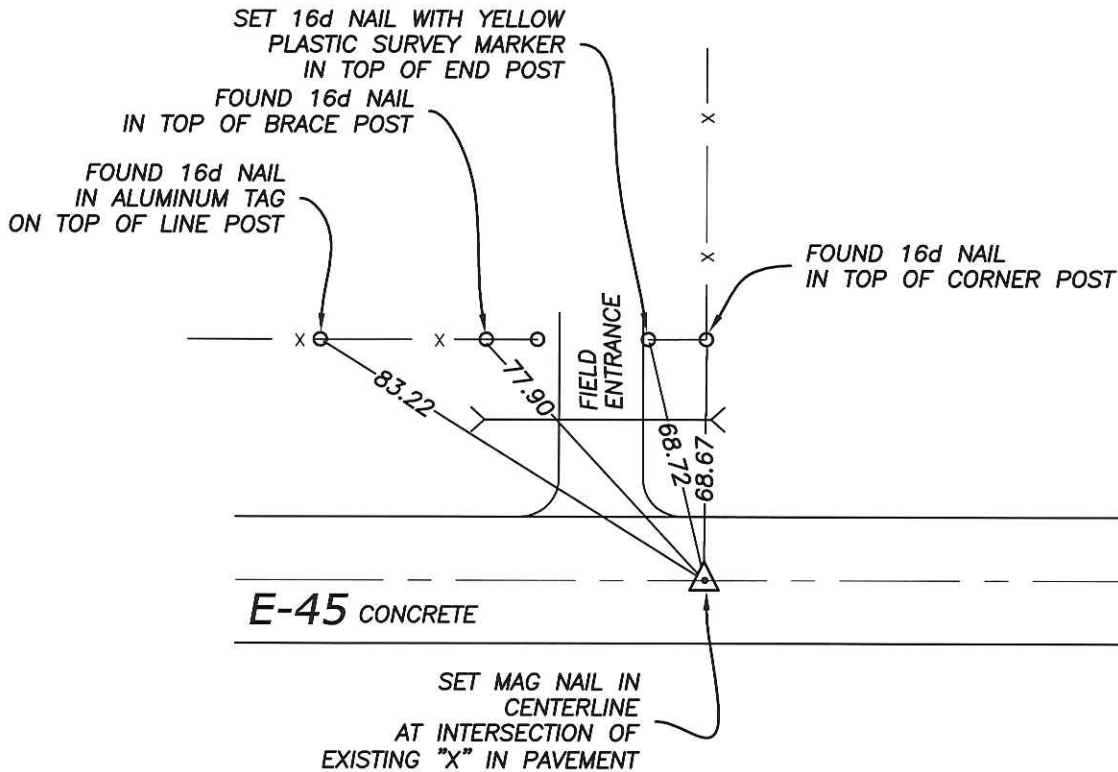
PLAN VIEW

NORTHEAST CORNER
NORTHWEST 1/4 NORTHEAST 1/4
SECTION 7-T83N-R2W

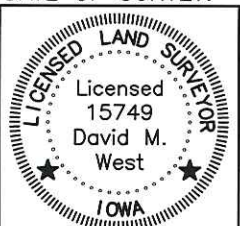
SET MAG NAIL IN CENTERLINE
JOINT AT THE INTERSECTION
OF EXISTING "X" IN PAVEMENT



NORTH



DATE OF SURVEY: 7/17/12--7/19/12



I hereby certify that this land surveying document was prepared and the related survey work was performed by me or under my direct personal supervision and that I am a duly licensed Land Surveyor under the laws of the State of Iowa.
David M. West 7/30/12
DAVID M. WEST, L.S. DATE
License number 15749
My license renewal date is December 31, 2012
Pages or sheets covered by this seal: 1

CORNERS TO BE INDEXED:

CORNER	SECTION	TWP	RANGE
NORTHEAST NW 1/4 NE 1/4	7	83N	2W

THIS IS NOT A CERTIFICATION

JONES COUNTY ENGINEER'S OFFICE, 19501 HWY. 64, ANAMOSA, IOWA, 52205 (319)462-3785

UNITED STATES PUBLIC LAND SURVEY CORNER CERTIFICATE

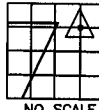
LAND SURVEY MONUMENTS SITUATED IN SECTION 7, TOWNSHIP 83
NORTH, RANGE 2 WEST OF THE 5TH P.M., JONES COUNTY, IOWA

CORNERS TO BE INDEXED

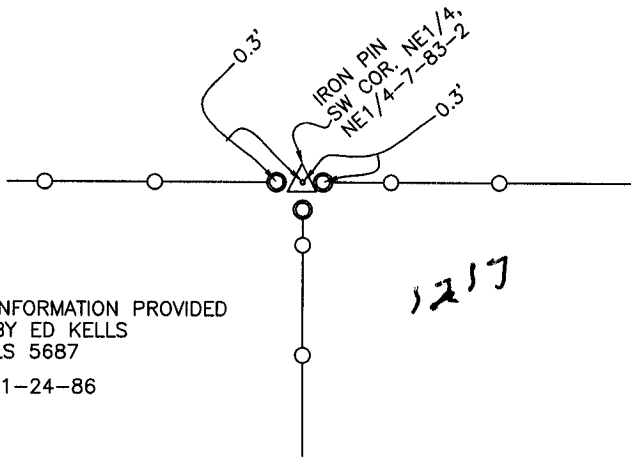
CORNER SECTION TOWNSHIP RANGE
SW.COR-NE-NE 7 83N 2W

OFFICE FILE NO.

83207i_122303.jpg



NO SCALE



INFORMATION PROVIDED BY ED KELLS LS 5687 1-24-86

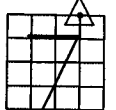
PREVIOUSLY RECORDED IN BOOK _____, PAGE _____
MONUMENT DESCRIPTION AND HOW ESTABLISHED INFORMATION AS INDICATED PROVIDED BY ED KELLS LS 5687, SOUTHWEST CORNER OF NORTHEAST QUARTER OF NORTHEAST QUARTER OF SECTION 7, TOWNSHIP 83 NORTH, RANGE 2 WEST OF THE 5TH PRINCIPAL MERIDIAN, JONES COUNTY, IOWA.

CORNERS TO BE INDEXED

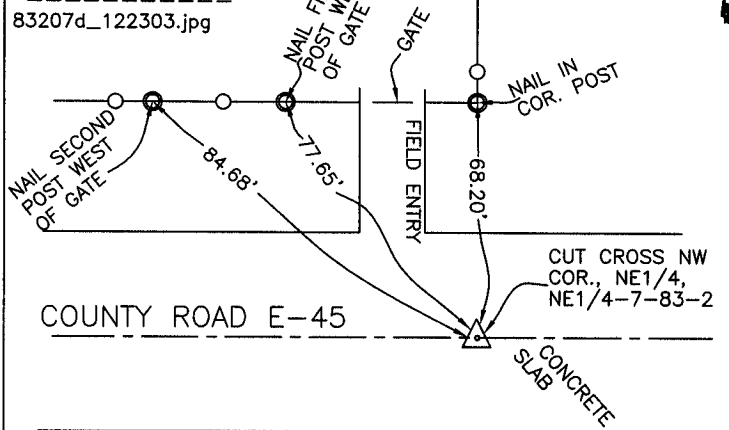
CORNER SECTION TOWNSHIP RANGE
NW.COR-NE-NE 7 83N 2W

OFFICE FILE NO.

83207d_122303.jpg



NO SCALE



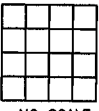
INFORMATION PROVIDED BY ED KELLS LS 5687 1-24-86

PREVIOUSLY RECORDED IN BOOK _____, PAGE _____
MONUMENT DESCRIPTION AND HOW ESTABLISHED INFORMATION AS SHOWN PROVIDED BY ED KELLS LS 5687. CUT CROSS SHOWN AS THE NORTHWEST CORNER OF THE NORTHEAST QUARTER OF THE NORTHEAST QUARTER OF SECTION 7, TOWNSHIP 83 NORTH, RANGE 2 WEST OF THE 5TH PRINCIPAL MERIDIAN, JONES COUNTY, IOWA.

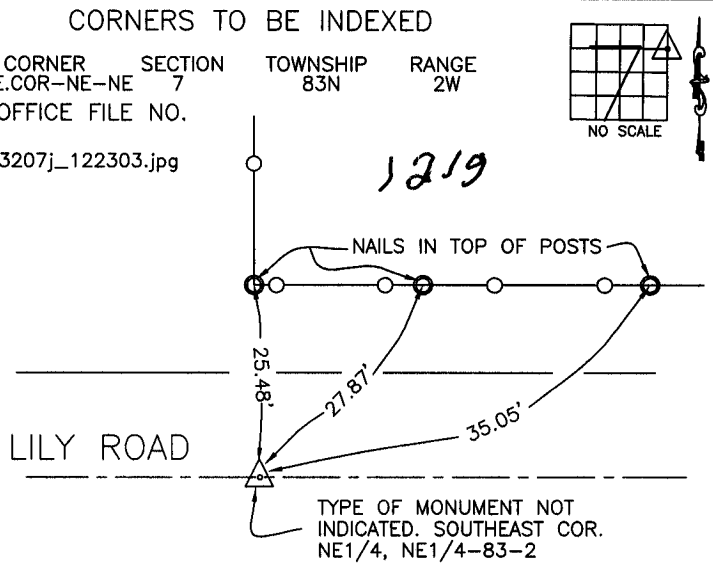
CORNERS TO BE INDEXED

CORNER SECTION TOWNSHIP RANGE

OFFICE FILE NO.



NO SCALE



INFORMATION PROVIDED BY ED KELLS LS 5687 1-24-86

PREVIOUSLY RECORDED IN BOOK _____, PAGE _____
MONUMENT DESCRIPTION AND HOW ESTABLISHED INFORMATION AS SHOWN PROVIDED BY ED KELLS, LS 5687. TYPE OF MONUMENT NOT IDENTIFIED. SOUTHEAST CORNER OF THE NORTHEAST QUARTER OF THE NORTHEAST QUARTER OF SECTION 7, TOWNSHIP 83 NORTH, RANGE 2 WEST OF THE 5TH PRINCIPAL MERIDIAN, JONES COUNTY, IOWA.

~~I hereby declare that this plat, survey or report was made by me or under my direct personal supervision and that I am a duly registered Land Surveyor under the laws of the State of Iowa.~~

Signed:

SEAL

JONES COUNTY ENGINEER'S OFFICE

19501 HWY. 64,
ANAMOSA, IOWA,
52205 (319)462-3785