

SECTION CORNER CERTIFICATE

OF
 LAND SURVEY MONUMENTS SITUATED IN SECTION 10, TOWNSHIP 83 NORTH,
 RANGE 2 WEST, OF THE FIFTH PRINCIPAL MERIDIAN, JONES, COUNTY, IOWA.

PREVIOUSLY RECORDED IN BOOK _____ AT PAGE _____

FOR RECORDER'S USE

REASON FOR PREPARING CERTIFICATE:

- A) THERE IS NO CERTIFICATE FOR THE CORNER ON FILE WITH THE RECORDER OF THE COUNTY IN WHICH THE CORNER IS LOCATED.
- B) CORNER POSITION DIFFERS FROM THAT SHOWN IN THE PUBLIC RECORDS OF THE COUNTY IN WHICH THE CORNER IS LOCATED.
- C) THE CORNER MONUMENT HAS BEEN REPLACED OR MODIFIED.
- D) THE REFERENCE TIES REFERRED TO IN AN EXISTING PUBLIC RECORD ARE INCORRECT.

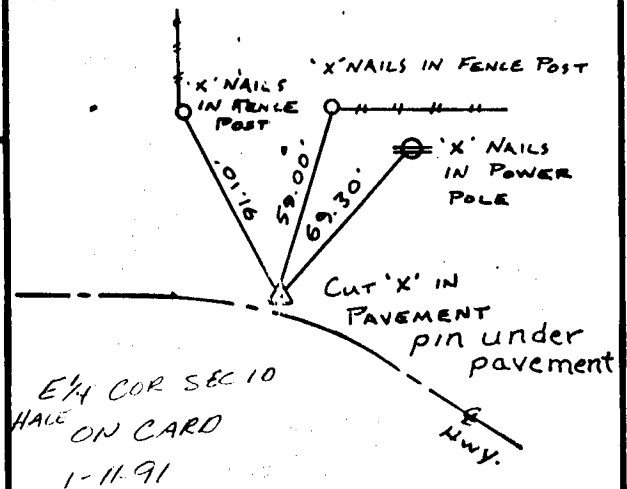
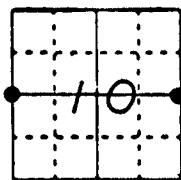
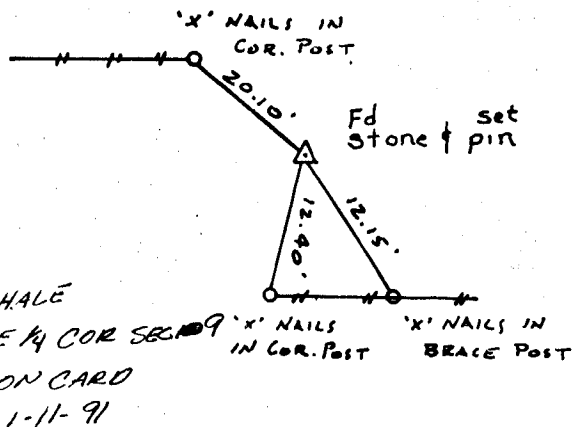
MONUMENT DESCRIPTION AND REMARKS:

W 1/4 CORNER SECTION 10-83-2 FOUND SANDSTONE 2" DEEP SET 1/2" 6 PIN WITH U.S. CAP # 8165 ON SOUTH EDGE OF STONE 4" DEEP
 E 1/4 CORNER SECTION 10-83-2 FOUND CUT 'X' IN PAVEMENT = P.I.
 Pin under pavement, used ties Jones Co. Engr.

RECOVERY TIE DRAWING

W 1/4 COR. SEC. 10-83-2

E 1/4 COR. SEC. 10-83-2



I, GLEN D. MEISNER, CERTIFY THAT THE CORNER LOCATION(S) SHOWN ON THIS RECORD WERE DETERMINED BY ME OR UNDER MY DIRECTION AND CONTROL AND THAT THIS U.S. PUBLIC LAND SURVEY MONUMENT RECORD IS CORRECT AND COMPLETE TO THE BEST OF MY KNOWLEDGE AND BELIEF.

Glen D. Meisner 1-3-91
 GLEN D. MEISNER L.S. NO 8165 DATE



DRAWING	<input checked="" type="checkbox"/> GOVERNMENT CORNER <input type="checkbox"/> 1/4" 6 PIN SET <input type="checkbox"/> CONVEYANCE <input type="checkbox"/> EXISTING FORCE LINE <input type="checkbox"/> R.R. LINE	SHEET 10	U.S. PUBLIC LAND SURVEY RECORD	H H H	HALL AND HALL ENGINEERS, INC. 226 20TH STREET DRIVE S.E. CEDAR RAPIDS, IOWA 52403 319-362-9548
	D R.W.B.	C GDM	A P	D DATE 12-5-90	SCALE NONE

THIS IS NOT A CERTIFICATION

JONES COUNTY ENGINEER'S OFFICE, 19501 HWY. 64, ANAMOSA, IOWA, 52205 (319)462-3785

UNITED STATES PUBLIC LAND SURVEY CORNER CERTIFICATE

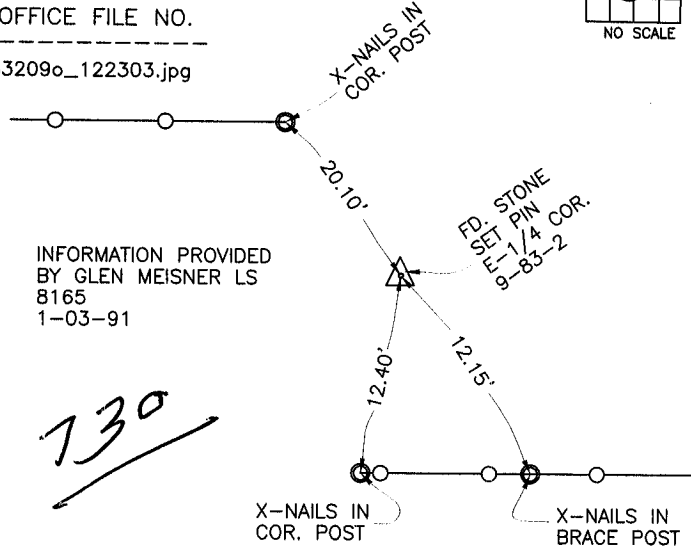
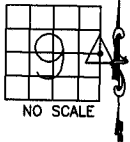
LAND SURVEY MONUMENTS SITUATED IN SECTION 9, TOWNSHIP 83
NORTH, RANGE 2 WEST OF THE 5TH P.M., JONES COUNTY, IOWA

CORNERS TO BE INDEXED

CORNER SECTION TOWNSHIP RANGE
E-QUARTER 9 83N 2W

OFFICE FILE NO.

83209o_122303.jpg



INFORMATION PROVIDED
BY GLEN MEISNER LS
8165
1-03-91

730

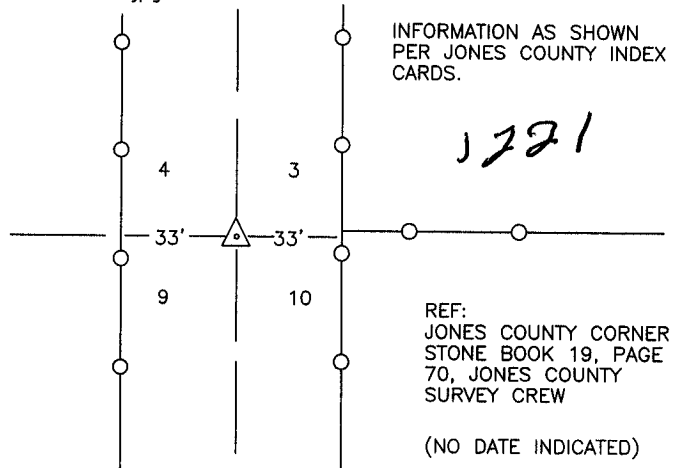
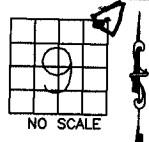
PREVIOUSLY RECORDED IN BOOK _____, PAGE _____
MONUMENT DESCRIPTION AND HOW ESTABLISHED INFORMATION
AS SHOWN PROVIDED BY GLEN MEISNER LS 8165, FD. STONE AND
SET PIN, EAST QUARTER COR. SECTION 9, TOWNSHIP 83 NORTH,
RANGE 2 WEST OF THE 5TH PRINCIPAL MERIDIAN, JONES COUNTY,
IOWA.

CORNERS TO BE INDEXED

CORNER SECTION TOWNSHIP RANGE
NE-CORNER 9 83N 2W

OFFICE FILE NO.

83209e_122903.jpg



INFORMATION AS SHOWN
PER JONES COUNTY INDEX
CARDS.

REF:
JONES COUNTY CORNER
STONE BOOK 19, PAGE
70, JONES COUNTY
SURVEY CREW

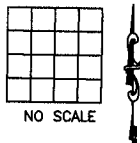
(NO DATE INDICATED)

PREVIOUSLY RECORDED IN BOOK _____, PAGE _____
MONUMENT DESCRIPTION AND HOW ESTABLISHED INDEX
CARD PER JONES COUNTY SURVEY CREW. NO DATE INDICATED.
TYPE OF MONUMENT NOT INDICATED. NORTHEAST CORNER OF
SECTION 9, TOWNSHIP 83 NORTH, RANGE 2 WEST OF THE 5TH
PRINCIPAL MERIDIAN, JONES COUNTY, IOWA.

CORNERS TO BE INDEXED

CORNER SECTION TOWNSHIP RANGE

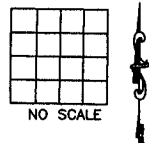
OFFICE FILE NO.



CORNERS TO BE INDEXED

CORNER SECTION TOWNSHIP RANGE

OFFICE FILE NO.



PREVIOUSLY RECORDED IN BOOK _____, PAGE _____
MONUMENT DESCRIPTION AND HOW ESTABLISHED _____

PREVIOUSLY RECORDED IN BOOK _____, PAGE _____
MONUMENT DESCRIPTION AND HOW ESTABLISHED _____

~~I hereby declare that this plat, survey or report
was made by me or under my direct personal
supervision and that I am a duly registered Land
Surveyor under the laws of the State of Iowa.~~

Signed: _____

SEAL

JONES COUNTY
ENGINEER'S OFFICE

19501 HWY. 64,
ANAMOSA, IOWA,
52205 (319)462-3785