

# THIS IS NOT A CERTIFICATION

JONES COUNTY ENGINEER'S OFFICE, 19501 HWY. 64, ANAMOSA, IOWA, 52205 (319)462-3785

## UNITED STATES PUBLIC LAND SURVEY CORNER CERTIFICATE

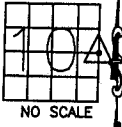
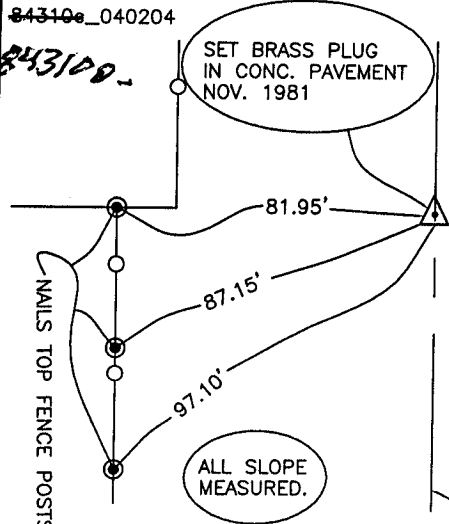
LAND SURVEY MONUMENTS SITUATED IN SECTION 10, TOWNSHIP 84  
NORTH, RANGE 3 WEST OF THE 5TH P.M., JONES COUNTY, IOWA

**CORNERS TO BE INDEXED**

CORNER SECTION TOWNSHIP RANGE  
E-QUARTER 10 84 3W

OFFICE FILE NO.

84310e\_040204



1629 ✓

REF:  
JONES COUNTY  
BOOK 271, PAGE  
48. PI STA.  
60+63.40 (4934)  
SURVEY.

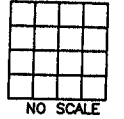
COUNTY SURVEY  
CREW: POSTEL  
POWELL-TARBOX

PREVIOUSLY RECORDED IN BOOK \_\_\_\_\_, PAGE \_\_\_\_\_  
MONUMENT DESCRIPTION AND HOW ESTABLISHED \_\_\_\_\_  
9-7-79, SET 1/2"x22" IRON PIN 8" BELOW SURFACE AFTER  
1979 GRADING. (ASSUMED TO BE QUARTER COR.) EAST QUARTER  
CORNER SECTION 10, TOWNSHIP 84 NORTH, RANGE 3 WEST OF THE  
5TH PRINCIPAL MERIDIAN, JONES COUNTY, IOWA.

**CORNERS TO BE INDEXED**

CORNER SECTION TOWNSHIP RANGE

OFFICE FILE NO.

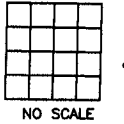


PREVIOUSLY RECORDED IN BOOK \_\_\_\_\_, PAGE \_\_\_\_\_  
MONUMENT DESCRIPTION AND HOW ESTABLISHED \_\_\_\_\_

**CORNERS TO BE INDEXED**

CORNER SECTION TOWNSHIP RANGE

OFFICE FILE NO.

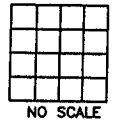


PREVIOUSLY RECORDED IN BOOK \_\_\_\_\_, PAGE \_\_\_\_\_  
MONUMENT DESCRIPTION AND HOW ESTABLISHED \_\_\_\_\_

**CORNERS TO BE INDEXED**

CORNER SECTION TOWNSHIP RANGE

OFFICE FILE NO.



PREVIOUSLY RECORDED IN BOOK \_\_\_\_\_, PAGE \_\_\_\_\_  
MONUMENT DESCRIPTION AND HOW ESTABLISHED \_\_\_\_\_

~~I hereby declare that this plat, survey or report was made by me or under my direct personal supervision and that I am a duly registered Land Surveyor under the laws of the State of Iowa.~~

Signed: \_\_\_\_\_

SEAL

JONES COUNTY  
ENGINEER'S OFFICE

19501 HWY. 64,  
ANAMOSA, IOWA,  
52205 (319)462-3785

H