

Jackson

MMS CONSULTANTS INC., 1917 SO. GILBERT ST, IOWA CITY, IA, 52240. PH 319-351-8282

# U.S. PUBLIC LAND SURVEY CORNER CERTIFICATE

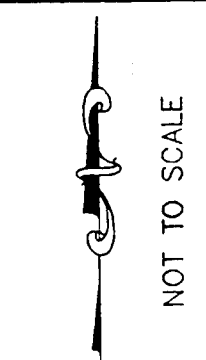
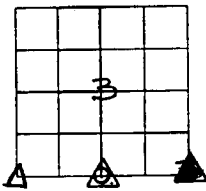
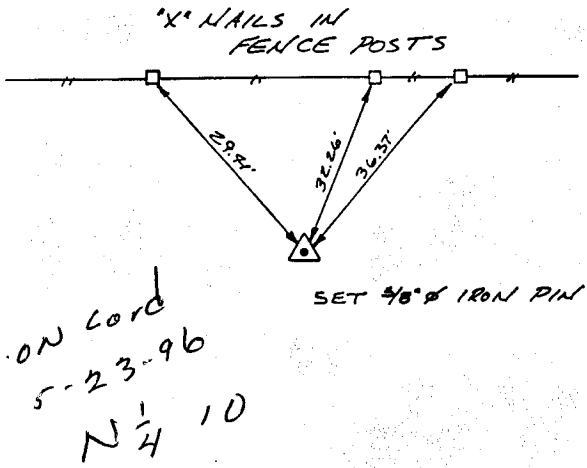
FOR LAND SURVEY MONUMENTS SITUATED IN SECTION 3, TOWNSHIP 84 NORTH, RANGE 3 WEST, OF THE FIFTH PRINCIPAL MERIDIAN, JONES, COUNTY, IOWA.

REASON FOR PREPARING CERTIFICATE:

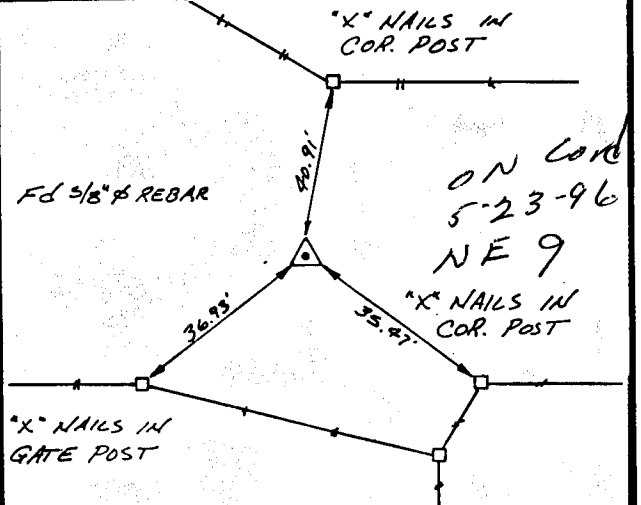
- A) THERE IS NO CERTIFICATE FOR THE CORNER ON FILE WITH THE RECORDER.
- B) CORNER FOUND DIFFERS FROM PREVIOUSLY RECORDED CERTIFICATE RECORDED IN BOOK     , AT PAGE     .

## RECOVERY TIE DRAWING

S1/4 COR. SEC. 3-T84N-R3W



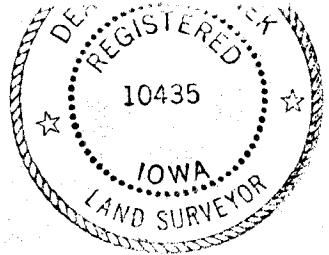
SW COR. SEC. 3-T84N-R3W



MONUMENT DESCRIPTION AND REMARKS :  
 SET 5/8" IRON PIN ON LINE BETWEEN  
 SW COR. & SE COR, AT MIDDPOINT

MONUMENT DESCRIPTION AND REMARKS :  
 FND 5/8" IRON PIN AT SW COR

I HEREBY CERTIFY THAT THE CORNER LOCATION(S) SHOWN ON THIS RECORD WERE DETERMINED BY ME OR UNDER MY DIRECT PERSONAL SUPERVISION AND THAT THIS U.S. PUBLIC LAND SURVEY MONUMENT RECORD IS CORRECT AND COMPLETE TO THE BEST OF MY KNOWLEDGE AND BELIEF.



*Dean E. Beranek* 4-6-96  
 Dean E. Beranek, L.S. Ia. Reg. No. 10435 DATE  
 MY BIENNIAL RENEWAL DATE IS DECEMBER 31, 1997.

DZMGRM △ GOVERNMENT CORNER ○ 5/8" TIE PIN SET --- CENTERLINE - - - EXISTING FENCE LINE - - - R.O.W. LINE	SHEET TITLE: U.S. PUBLIC LAND SURVEY CORNER CERTIFICATE	MMS CONSULTANTS, INC. Iowa City, Iowa 319-351-8282
	PROJECT TITLE: SECTION CORNER TIES BOUNDARY SURVEY (WILLEMS)	
ZED MAS	XIC	YDA
DATE: 1-2-92	SCALE: NONE	F NO: 273 P NO: 2965-001