

2004 1656

FILED
RECORDERS OFFICE
JONES COUNTY IOWA

04 MAY 13 AM 9:29

MARIE KRUTZFIELD
RECORDER NO FEE

J.D. TJEPKES, LS. JONES COUNTY ENGINEER'S OFFICE, 19501 HWY. 64, ANAMOSA, IOWA, 52205 (319)462-3785

UNITED STATES PUBLIC LAND SURVEY CORNER CERTIFICATE

LAND SURVEY MONUMENTS SITUATED IN SECTION 10, TOWNSHIP 84
NORTH, RANGE 3 WEST OF THE 5TH P.M., JONES COUNTY, IOWA

CORNERS TO BE INDEXED

CORNER	SECTION	TOWNSHIP	RANGE
NE	10	84N	3W

OFFICE FILE NO. 84310e_050704.tif

FIELD NOTES:
9-29-03
BK #358
P 78

PREVIOUSLY RECORDED IN BOOK _____, PAGE _____
MONUMENT DESCRIPTION AND HOW ESTABLISHED _____
PER FOUND TIES LS BERANEK (10435) DATED 4-6-1996, FOUND
BRASS PLUG 1.2' WEST OF CENTERLINE X-44. RETIED AS
INDICATED FOR NE COR SEC 10 T84N R3W.

CORNERS TO BE INDEXED

CORNER	SECTION	TOWNSHIP	RANGE

OFFICE FILE NO. _____

PREVIOUSLY RECORDED IN BOOK _____, PAGE _____
MONUMENT DESCRIPTION AND HOW ESTABLISHED _____

CORNERS TO BE INDEXED

CORNER	SECTION	TOWNSHIP	RANGE

OFFICE FILE NO. _____

PREVIOUSLY RECORDED IN BOOK _____, PAGE _____
MONUMENT DESCRIPTION AND HOW ESTABLISHED _____

CORNERS TO BE INDEXED

CORNER	SECTION	TOWNSHIP	RANGE

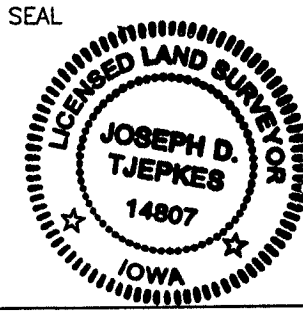
OFFICE FILE NO. _____

PREVIOUSLY RECORDED IN BOOK _____, PAGE _____
MONUMENT DESCRIPTION AND HOW ESTABLISHED _____

I hereby declare that this plat, survey or report was made by me or under my direct personal supervision and that I am a duly registered Land Surveyor under the laws of the State of Iowa.

Signed: *J.D. Tjepkes* 5-13-04

Joseph D. Tjepkes L.S. Iowa Reg. No. 14807
My Registration Renewal Date is December 31, 2004



J.D. TJEPKES LS 14807
JONES COUNTY
ENGINEER'S OFFICE

19501 HWY. 64,
ANAMOSA, IOWA,
52205 (319)462-3785

G

Jackson

MMS CONSULTANTS INC., 1917 SO. GILBERT ST, IOWA CITY, IA, 52240, PH 319-351-8282

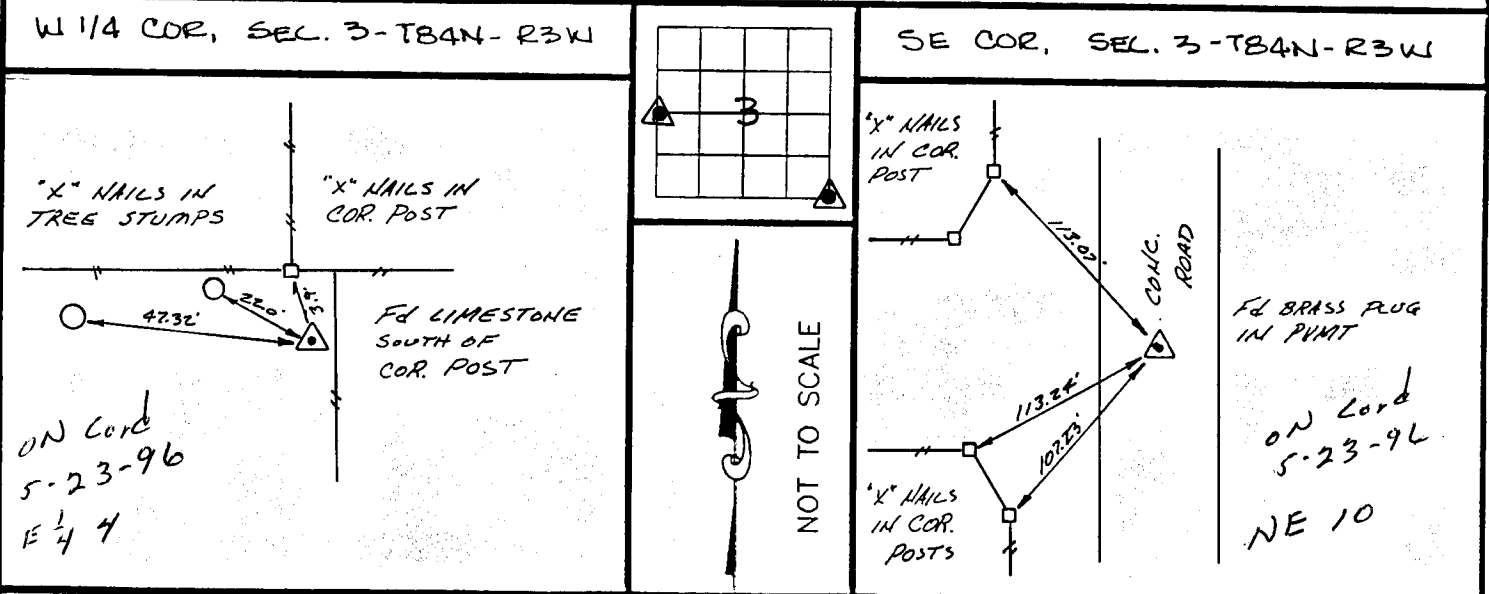
U.S. PUBLIC LAND SURVEY CORNER CERTIFICATE

FOR LAND SURVEY MONUMENTS SITUATED IN SECTION 3, TOWNSHIP 84 NORTH, RANGE 3 WEST, OF THE FIFTH PRINCIPAL MERIDIAN, JONES, COUNTY, IOWA.

REASON FOR PREPARING CERTIFICATE:

- A) THERE IS NO CERTIFICATE FOR THE CORNER ON FILE WITH THE RECORDER.
- B) CORNER FOUND DIFFERS FROM PREVIOUSLY RECORDED CERTIFICATE RECORDED IN BOOK ____, AT PAGE ____.

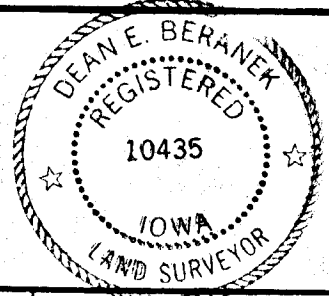
RECOVERY TIE DRAWING



MONUMENT DESCRIPTION AND REMARKS :
 FND LIMESTONE 1' DEEP

MONUMENT DESCRIPTION AND REMARKS :
 FND BRASS PLUG IN PAVEMENT

I HEREBY CERTIFY THAT THE CORNER LOCATION(S) SHOWN ON THIS RECORD WERE DETERMINED BY ME OR UNDER MY DIRECT PERSONAL SUPERVISION AND THAT THIS U.S. PUBLIC LAND SURVEY MONUMENT RECORD IS CORRECT AND COMPLETE TO THE BEST OF MY KNOWLEDGE AND BELIEF.



Deane E. Beranek 4-6-96
 Deane E. Beranek, L.S. Ia. Reg. No. 10435 DATE
 MY BIENNIAL RENEWAL DATE IS DECEMBER 31, 1997.

ORIGINAL GOVERNMENT CORNER 5/8" TIE PIN SET CENTERLINE EXISTING FENCE LINE R.O.W. LINE	SHEET TITLE: U.S. PUBLIC LAND SURVEY CORNER CERTIFICATE	MMS CONSULTANTS, INC. Iowa City, Iowa 319-351-8282
	PROJECT TITLE: SECTION CORNER TIES BOUNDARY SURVEY (WILLEMS)	
D N W M A S	X I O	A P P
DATE 1-2-92	SCALE NONE	FNO B 273
		PNO J 2965-001