

2000 3546

FILED  
RECORDERS OFFICE  
JONES COUNTY IOWA

00 NOV 20 AM 11:35

MARIE KRUTZFIELD  
RECORDER 6.00 Pd

STEPHEN MICHAEL BRAIN, BRAIN ENGINEERING, INC., 777 10TH STREET, MARION, IOWA 52302 PH. (319) 373-1318

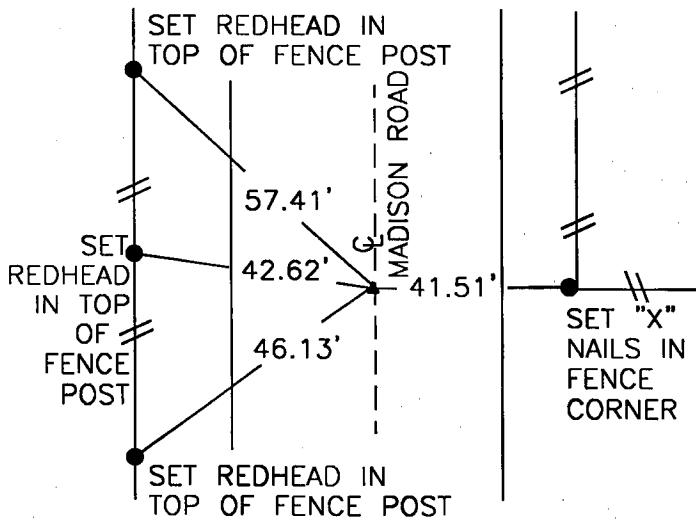
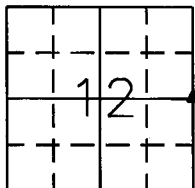
# UNITED STATES PUBLIC LAND SURVEY CORNER CERTIFICATE

LAND SURVEY MONUMENTS SITUATED IN SECTION 12, TOWNSHIP 84 NORTH  
RANGE 3 WEST OF THE 5TH P.M., JONES COUNTY, IOWA.

NO SCALE



E 1/4 CORNER



843120-111400

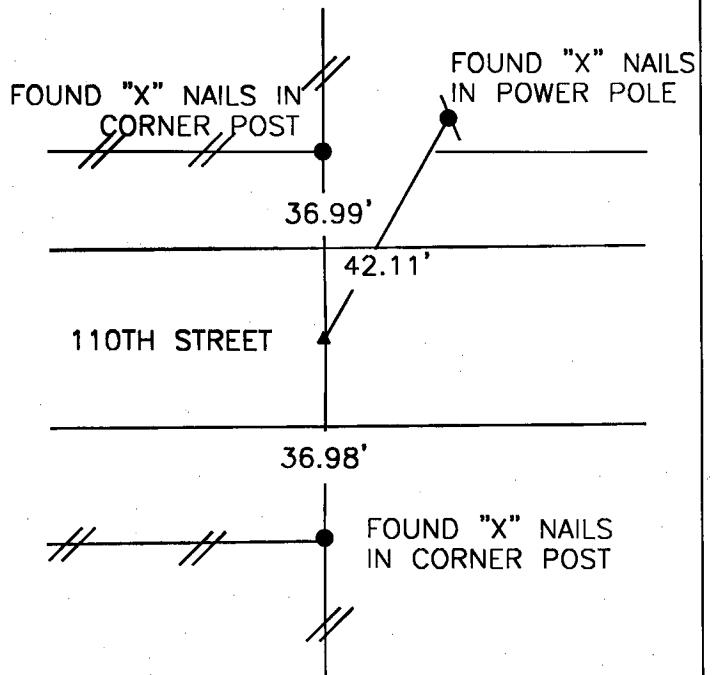
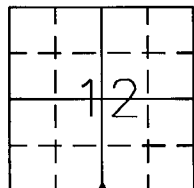
PREVIOUSLY RECORDED IN BOOK \_\_\_\_\_ PAGE \_\_\_\_\_

MONUMENT DESCRIPTION AND HOW ESTABLISHED \_\_\_\_\_  
SET 1/2" REBAR 2" DEEP #9647. BY SPLITTING  
FENCES AND ROAD. NO TIES ON FILE.

NO SCALE



S 1/4 CORNER



84313C-111400

PREVIOUSLY RECORDED IN BOOK \_\_\_\_\_ PAGE \_\_\_\_\_

MONUMENT DESCRIPTION AND HOW ESTABLISHED \_\_\_\_\_  
FOUND 5/8" REBAR 8" DEEP. NO TIES ON  
FILE.



I hereby certify that this land surveying document and the related survey work was performed by me or under my direct personal supervision and that I am a duly licensed Land Surveyor under the laws of the State of Iowa.

Signed *Stephen Michael Brain* Date 11/19/00  
Stephen Michael Brain, L.S.  
My License Renewal Date Is December 31, 2000  
License Number 9647  
Pages or sheets covered by this seal: 1/1

CORNERS TO BE INDEXED

CORNER SECTION TOWNSHIP RANGE  
S 1/4 CORNER 12 T84N R3W  
E 1/4 CORNER 12 T84N R3W

**BRAIN ENGINEERING, INC.**

777 10TH STREET  
MARION, IOWA 52302 26890-10  
(319) 373-1318