

Jones County
 Marie Krutzfield, Recorder
Fee Book 2010 1389
 05/28/2010 @0940AM
 ZSC SEC COR CERT
 Book: Page: # Pages: 1
 Total Fees: \$9.00

Prepared by Wm. Burger Land Surveyor 510 3rd Street West Court, Worthington, Iowa Phone 563 - 855 2028

UNITED STATES PUBLIC LAND SURVEY CORNER CERTIFICATE

Land Survey Monuments situated in Section 15, Township 84N, Range 3W, of the Fifth Principal Meridian, Jones County, Iowa. Previously recorded in N/A in the Office of the County Recorder

Monument Description and Remarks: (No Corner Certificates found at the County Recorders Office)

E1/4 CORNER - FD. BRASS PLUG IN CONCRETE PAVEMENT

SE CORNER NE1/4 SE1/4 - SET 1/2" IRON ROD W/ YELLOW LS CAP #12642 - SET ON LINE AND MIDWAY BETWEEN THE E1/4 CORNER AND THE SE CORNER

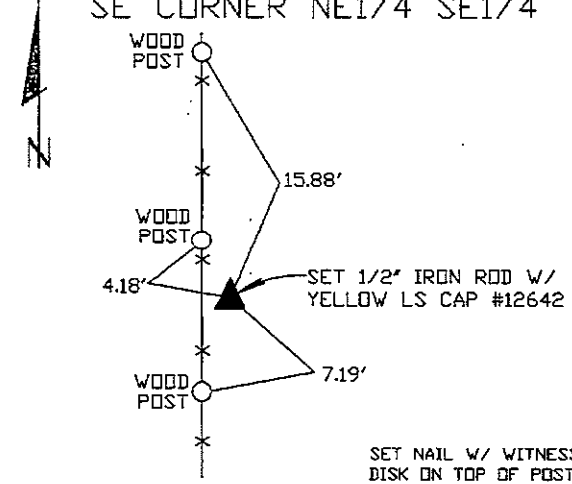
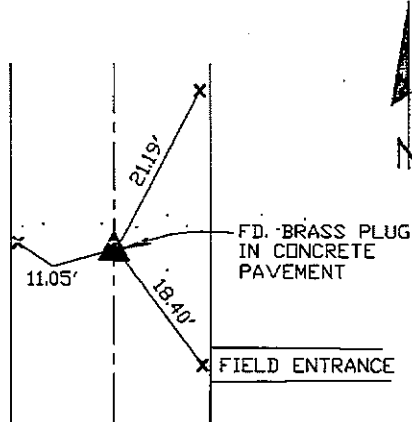
SE CORNER - FD. LIMESTONE WITH 1/2" IRON ROD NEXT TO IT ON NORTH SIDE

SW CORNER NE1/4 SE1/4 - SET 1/2" IRON ROD W/ YELLOW LS CAP #12642 - RUN STRAIGHT LINES FROM OPPOSITE 1/4 1/4 CORNERS AND SET AT POINT OF INTERSECTION

E1/4 CORNER

PLAN VIEW

SE CORNER NE1/4 SE1/4

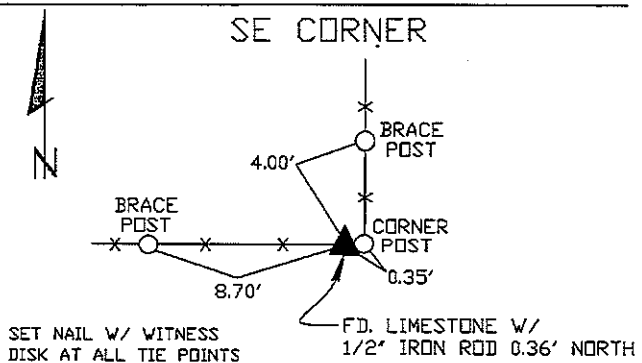
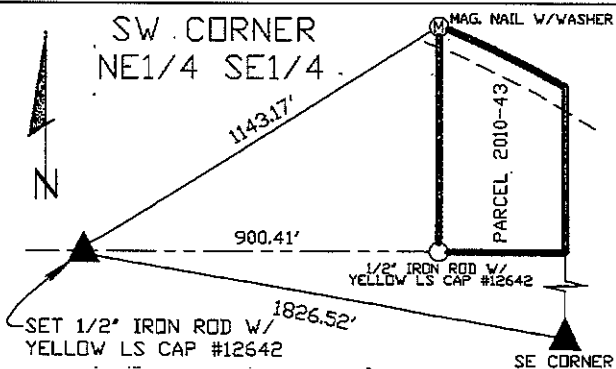


SET CUT 'X' IN CONCRETE ROADWAY AT ALL TIE POINTS

SET NAIL W/ WITNESS DISK ON TOP OF POST AT ALL TIE POINTS

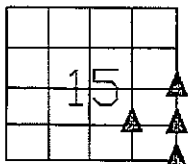
SW CORNER NE1/4 SE1/4

SE CORNER



SET NAIL W/ WITNESS DISK AT ALL TIE POINTS

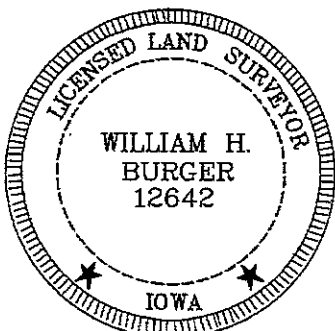
FD. LIMESTONE W/ 1/2" IRON ROD 0.36' NORTH



SEC. 15 TWP. 84N RANGE 3W

CORNERS TO BE INDEXED

E1/4 CORNER	15	84N	3W
SE CORNER NE1/4 SE1/4	15	84N	3W
SW CORNER NE1/4 SE1/4	15	84N	3W
SE CORNER	15	84N	3W



I hereby certify that this land surveying document was prepared and related survey work was performed by me or under my direct personal supervision and that I am a duly licensed Land Surveyor under the laws of the State of Iowa.

William H. Burger 5/27/10
 William H. Burger Date

License number 12642

My license renewal date is December 31, 2010

Pages or Sheets covered by this seal: Sheet 1 of 1

2005 1936

FILED
RECORDERS OFFICE
JONES COUNTY IOWA

05 JUN -7 AM 10:44

MARIE KRUTZFIELD
RECORDER 7.00 Ad

PREPARED BY
STEPHEN MICHAEL BRAIN, BRAIN ENGINEERING, INC., 1540 MIDLAND COURT NE, CEDAR RAPIDS, IOWA PH. (319) 294-9424

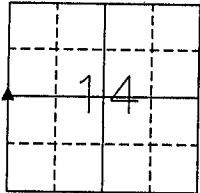
UNITED STATES PUBLIC LAND SURVEY CORNER CERTIFICATE

LAND SURVEY MONUMENTS SITUATED IN SECTION 14, TOWNSHIP 84 NORTH
RANGE 3 WEST OF THE 5TH P.M., JONES COUNTY, IOWA.

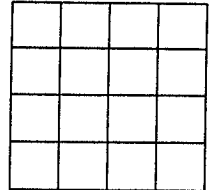
NO SCALE



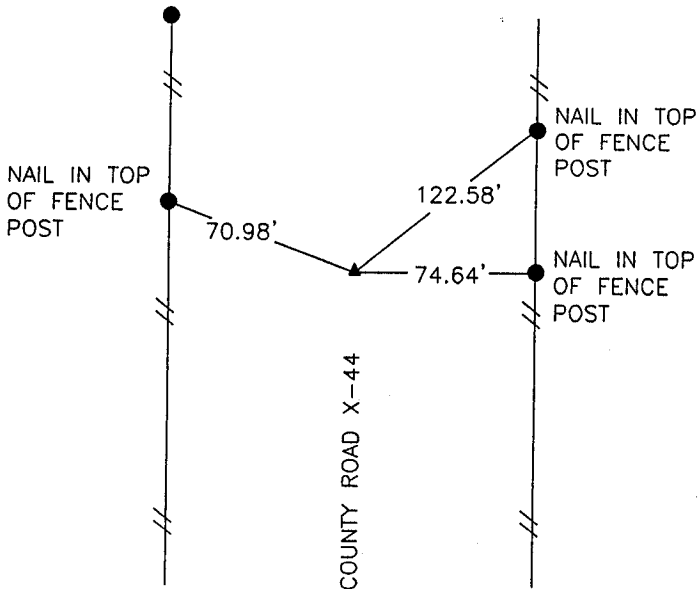
W 1/4 CORNER



NO SCALE



1633 v



843150-060605.116

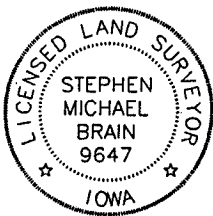
PREVIOUSLY RECORDED IN BOOK _____ PAGE _____

MONUMENT DESCRIPTION AND HOW ESTABLISHED _____

FOUND BRASS PLUG IN CENTERLINE OF PAVEMENT.

PREVIOUSLY RECORDED IN BOOK _____ PAGE _____

MONUMENT DESCRIPTION AND HOW ESTABLISHED _____



I hereby certify that this land surveying document and the related survey work was performed by me or under my direct personal supervision and that I am a duly licensed Land Surveyor under the laws of the State of Iowa.

Signed *Stephen Michael Brain* Date 6/6/05
Stephen Michael Brain, L.S.

My License Renewal Date is December 31, 2006
License Number 9647
Pages or sheets covered by this seal: 1/1

- A. THERE IS NO CERTIFICATE FOR THE CORNER ON FILE WITH THE RECORDER OF THE COUNTY IN WHICH THE CORNER IS LOCATED
- B. THE SURVEYOR IN RESPONSIBLE CHARGE OF THE LAND SURVEYING ACCEPTS A CORNER POSITION WHICH DIFFERS FROM THAT SHOWN IN THE PUBLIC RECORDS OF THE COUNTY IN WHICH THE CORNER IS LOCATED.
- C. THE CORNER MONUMENT IS REPLACED OR MODIFIED IN ANY WAY.
- D. THE REFERENCE TIES REFERRED TO IN AN EXISTING PUBLIC RECORD ARE NOT CORRECT.

CORNERS TO BE INDEXED

CORNER	SECTION	TOWNSHIP	RANGE
W 1/4 CORNER	14	T84N	R 3 W

BRAIN ENGINEERING, INC.

1540 MIDLAND COURT NE
CEDAR RAPIDS, IOWA 52402
(319) 294-9424

285005-30
V.S.M.B. 45

h

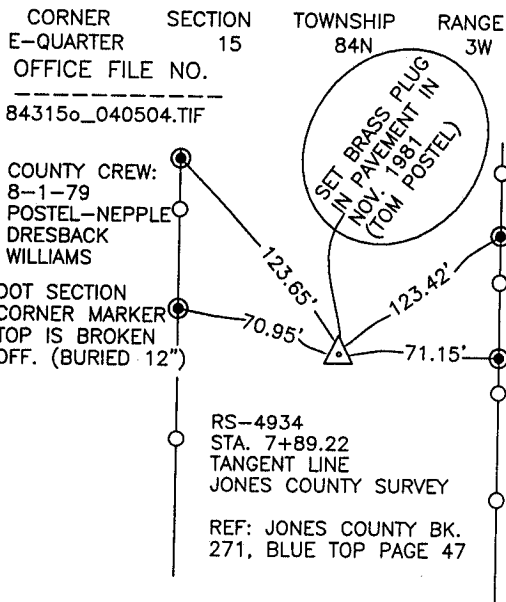
THIS IS NOT A CERTIFICATION

JONES COUNTY ENGINEER'S OFFICE, 19501 HWY. 64, ANAMOSA, IOWA, 52205 (319)462-3785

UNITED STATES PUBLIC LAND SURVEY CORNER CERTIFICATE

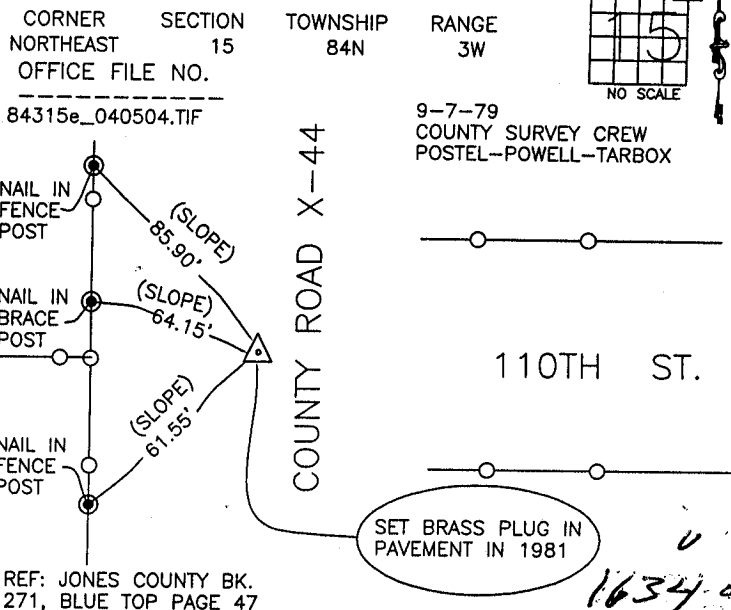
LAND SURVEY MONUMENTS SITUATED IN SECTION 15, TOWNSHIP 84
NORTH, RANGE 3 WEST OF THE 5TH P.M., JONES COUNTY, IOWA

CORNERS TO BE INDEXED



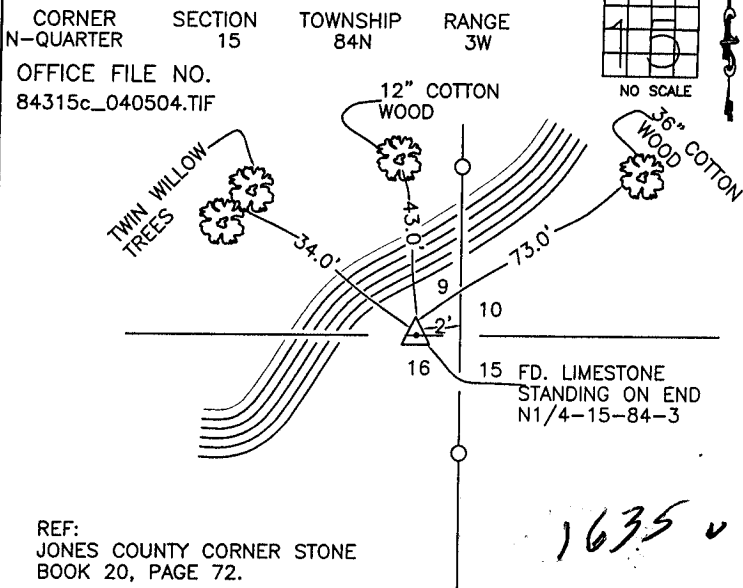
PREVIOUSLY RECORDED IN BOOK _____, PAGE _____
MONUMENT DESCRIPTION AND HOW ESTABLISHED COUNTY _____
SURVEY CREW SET BRASS PLUG IN PAVEMENT IN 1981. THE ORIGINAL MONUMENT WAS DOT MARKER WITH TOP BROKEN OFF. SET REFERENCE POINTS AND TIED AS INDICATED. EAST QUARTER CORNER OF SECTION 15, TOWNSHIP 86 NORTH, RANGE 3 WEST OF THE 5TH PRINCIPAL MERIDIAN, JONES COUNTY, IOWA.

CORNERS TO BE INDEXED



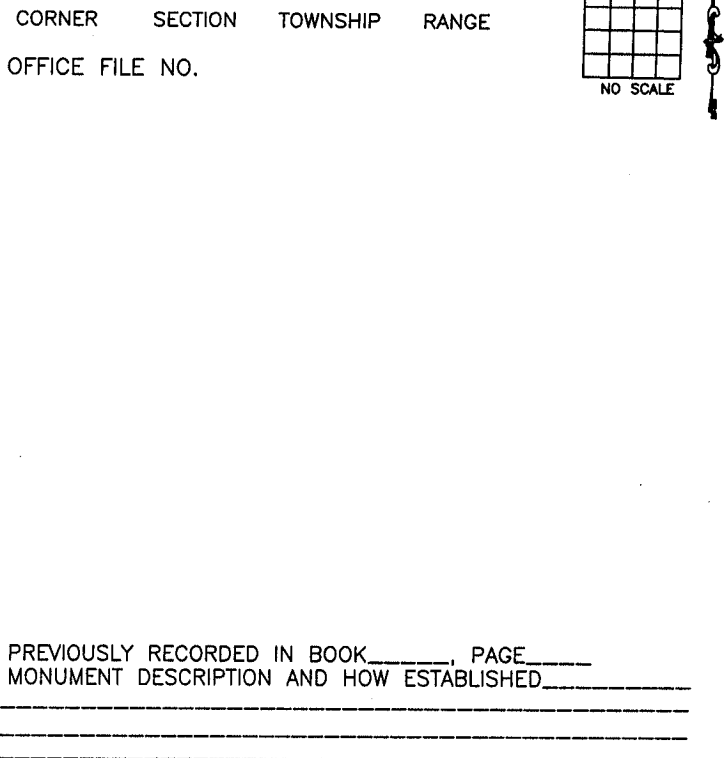
PREVIOUSLY RECORDED IN BOOK _____, PAGE _____
MONUMENT DESCRIPTION AND HOW ESTABLISHED 1979
COUNTY SURVEY CREW SET 1/2" IRON PIN DIRECTLY OVER 4"x4"x48" CONCRETE MONUMENT, MONUMENT WAS BURIED APPROX. 4' BELOW SURFACE AFTER GRADING. TOP PIN 14" DOWN. SET BRASS PLUG IN PAVEMENT IN 1981. SET TIES AS INDICATED. NORTHEAST CORNER OF SECTION 15, T84N, R3W, 5TH PM, JONES COUNTY, IOWA.

CORNERS TO BE INDEXED



PREVIOUSLY RECORDED IN BOOK _____, PAGE _____
MONUMENT DESCRIPTION AND HOW ESTABLISHED COUNTY _____
SURVEY CREW FOUND LIMESTONE STANDING ON END. (NO SIZE GIVEN) SET REFERENCE POINTS AND TIED AS INDICATED. NORTH QUARTER CORNER SECTION 15, TOWNSHIP 84 NORTH, RANGE 3 WEST OF THE 5TH PRINCIPAL MERIDIAN, JONES COUNTY, IOWA.

CORNERS TO BE INDEXED



~~I hereby declare that this plat, survey or report was made by me or under my direct personal supervision and that I am a duly registered Land Surveyor under the laws of the State of Iowa.~~

Signed: _____

SEAL

JONES COUNTY
ENGINEER'S OFFICE

19501 HWY. 64,
ANAMOSA, IOWA,
52205 (319)462-3785