

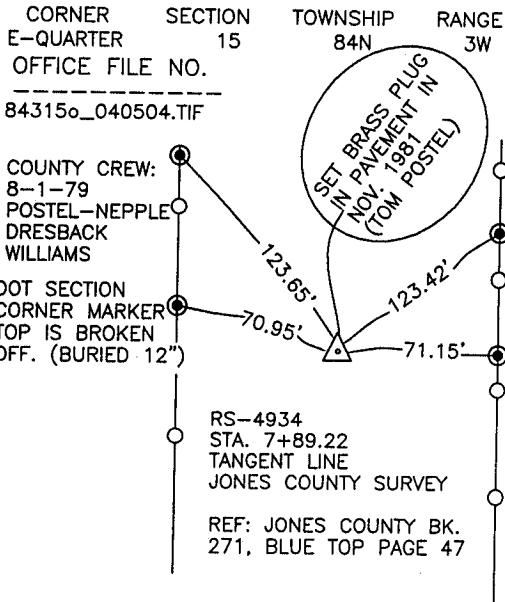
THIS IS NOT A CERTIFICATION

JONES COUNTY ENGINEER'S OFFICE, 19501 HWY. 64, ANAMOSA, IOWA, 52205 (319)462-3785

UNITED STATES PUBLIC LAND SURVEY CORNER CERTIFICATE

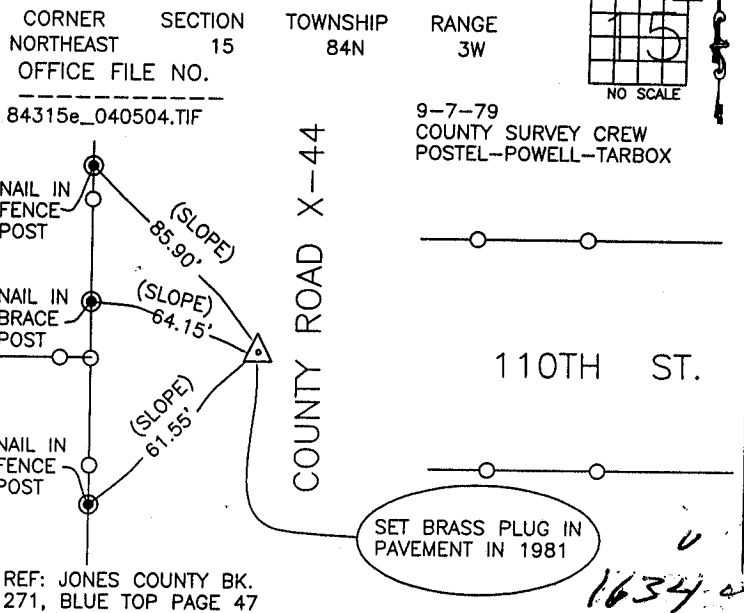
LAND SURVEY MONUMENTS SITUATED IN SECTION 15, TOWNSHIP 84
NORTH, RANGE 3 WEST OF THE 5TH P.M., JONES COUNTY, IOWA

CORNERS TO BE INDEXED



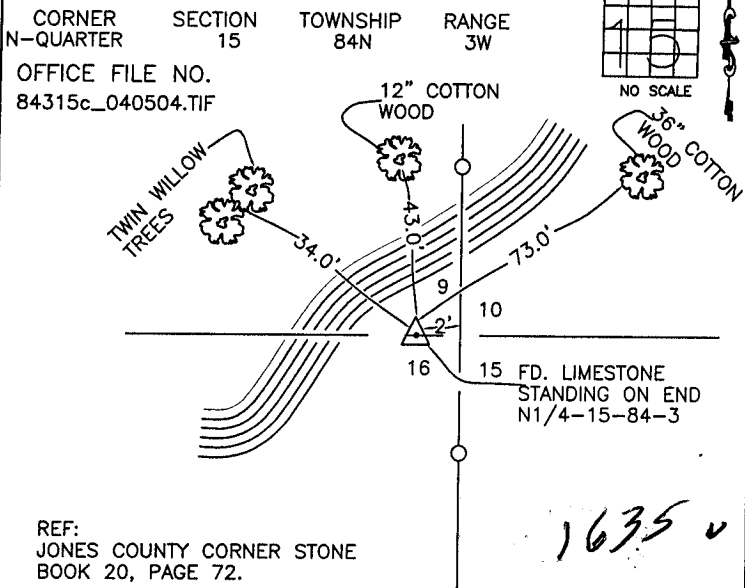
PREVIOUSLY RECORDED IN BOOK _____, PAGE _____
MONUMENT DESCRIPTION AND HOW ESTABLISHED COUNTY _____
SURVEY CREW SET BRASS PLUG IN PAVEMENT IN 1981. THE ORIGINAL MONUMENT WAS DOT MARKER WITH TOP BROKEN OFF. SET REFERENCE POINTS AND TIED AS INDICATED. EAST QUARTER CORNER OF SECTION 15, TOWNSHIP 86 NORTH, RANGE 3 WEST OF THE 5TH PRINCIPAL MERIDIAN, JONES COUNTY, IOWA.

CORNERS TO BE INDEXED



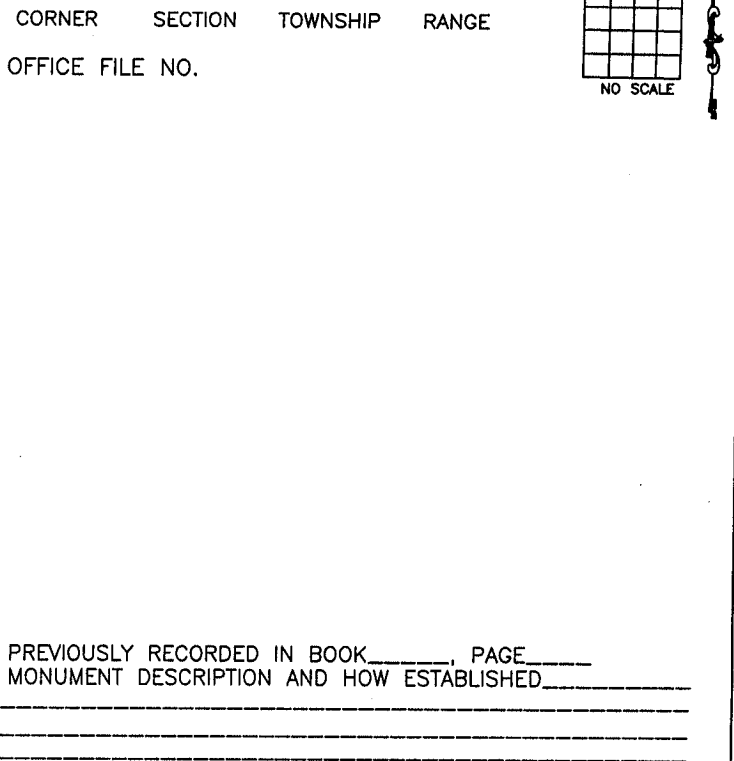
PREVIOUSLY RECORDED IN BOOK _____, PAGE _____
MONUMENT DESCRIPTION AND HOW ESTABLISHED 1979
COUNTY SURVEY CREW SET 1/2" IRON PIN DIRECTLY OVER 4"x4"x48" CONCRETE MONUMENT, MONUMENT WAS BURIED APPROX. 4' BELOW SURFACE AFTER GRADING. TOP PIN 14" DOWN. SET BRASS PLUG IN PAVEMENT IN 1981. SET TIES AS INDICATED. NORTHEAST CORNER OF SECTION 15, T84N, R3W, 5TH PM, JONES COUNTY, IOWA.

CORNERS TO BE INDEXED



PREVIOUSLY RECORDED IN BOOK _____, PAGE _____
MONUMENT DESCRIPTION AND HOW ESTABLISHED COUNTY _____
SURVEY CREW FOUND LIMESTONE STANDING ON END. (NO SIZE GIVEN) SET REFERENCE POINTS AND TIED AS INDICATED. NORTH QUARTER CORNER SECTION 15, TOWNSHIP 84 NORTH, RANGE 3 WEST OF THE 5TH PRINCIPAL MERIDIAN, JONES COUNTY, IOWA.

CORNERS TO BE INDEXED



~~I hereby declare that this plat, survey or report was made by me or under my direct personal supervision and that I am a duly registered Land Surveyor under the laws of the State of Iowa.~~

Signed: _____

SEAL

JONES COUNTY
ENGINEER'S OFFICE

19501 HWY. 64,
ANAMOSA, IOWA,
52205 (319)462-3785

L