

2000 2883

FILED  
 RECORDERS OFFICE  
 JONES COUNTY IOWA

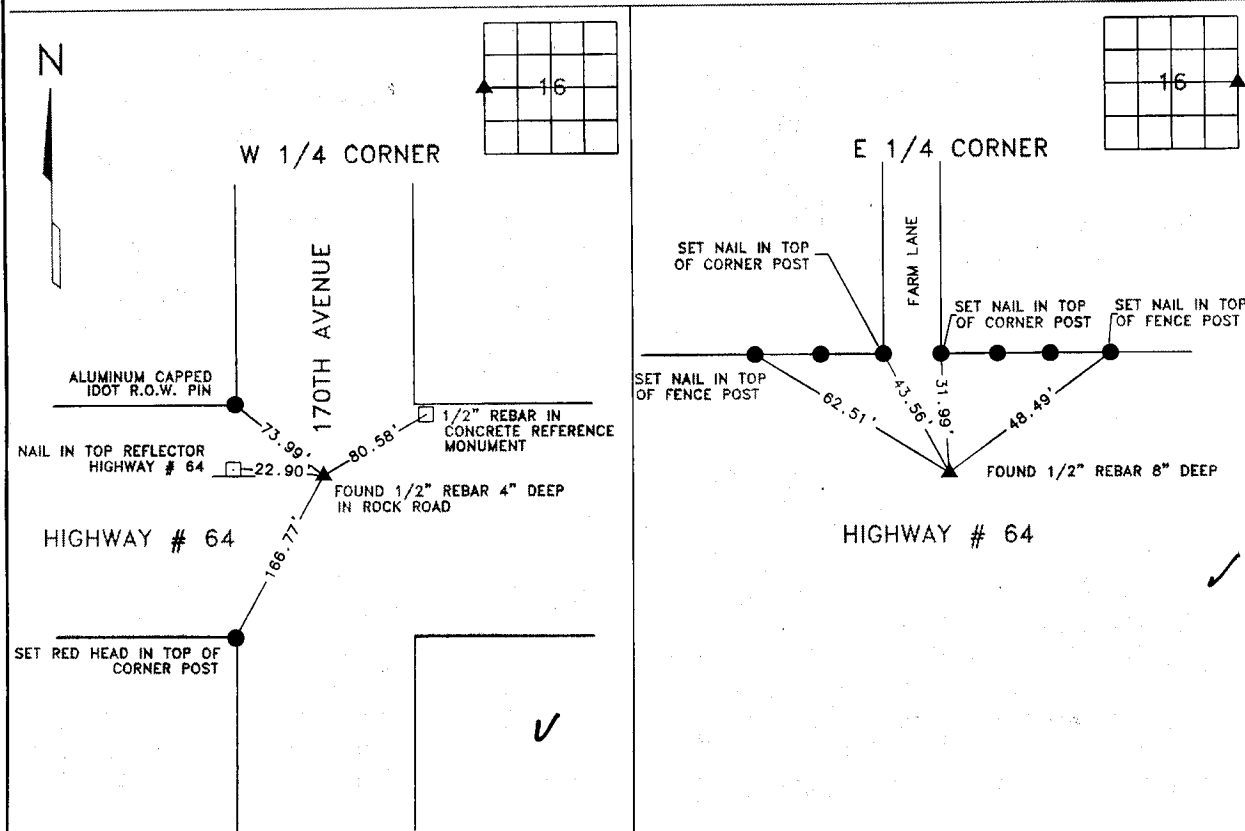
00 SEP 20 PM 1:29

MARIE KRUTZFIELD  
 RECORDER 6.00pd

CLARENCE J. WALTON, LS # 11310, WALTON LAND SURVEYING, P.C., 2213 LAUREN DR. SW, CEDAR RAPIDS, IOWA 52404, (319) 363-4271

UNITED STATES PUBLIC LAND  
 SURVEY CORNER CERTIFICATE

LAND SURVEY MONUMENTS SITUATED IN SECTION 16, TOWNSHIP 84 NORTH, RANGE 3 WEST  
 OF THE 5TH PRINCIPAL MERIDIAN, JONES COUNTY, IOWA



MONUMENT DESCRIPTION AND REMARKS  
 FOUND 1/2" REBAR 4" DEEP IN ROCK ROAD USING I.D.O.T. CORNER TIES

MONUMENT DESCRIPTION AND REMARKS  
 FOUND 1/2" REBAR 8" DEEP USING I.D.O.T. TIES

NOTE: ALL MEASUREMENTS IN FEET AND DECIMALS THEREOF.

I hereby certify that this land surveying document and the related survey work was performed by me or under my direct personal supervision and that I am a duly licensed Land Surveyor under the laws of the State of Iowa.  
 Signed: *Clarence J. Walton* Date: *9/20/00*  
 Clarence J. Walton, L.S.  
 My License Renewal Date is December 31, 2001  
 License Number 11310  
 Pages or sheets covered by this seal: 1 of 1

CORNERS TO BE INDEXED			
CORNERS	SECTION	TWP	RANGE
W 1/4	16	84N	3W
E 1/4	16	84N	3W

PROJECT No: 10090-2S	Title: UNITED STATES PUBLIC LAND SURVEY CORNER CERTIFICATE	WALTON LAND SURVEYING, P.C. 2213 LAUREN DRIVE SW CEDAR RAPIDS, IOWA 52404 (319) 363-4271	Drawn: CJW	Book: 3
			9/15/00	Scale: NONE