

FILED
RECORDERS OFFICE
JONES COUNTY IOWA

05 APR -6 PM 4: 13

MARIE KRUTZFIELD
RECORDER 7.00 *PK*

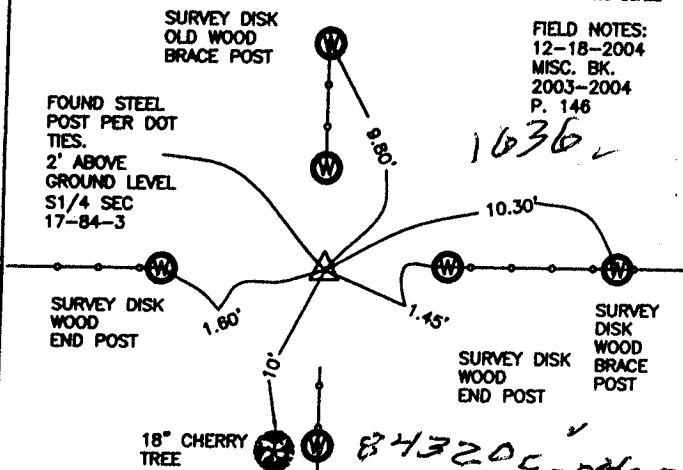
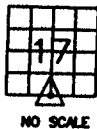
J.D. TJEPKES, LS. 14807, 23428 RIDGE ROAD, ANAMOSA, IOWA, 52205 (319-462-6067)

UNITED STATES PUBLIC LAND SURVEY CORNER CERTIFICATE

LAND SURVEY MONUMENTS SITUATED IN SECTION 17, TOWNSHIP 84
NORTH, RANGE 3 WEST OF THE 5TH P.M., JONES COUNTY, IOWA

CORNERS TO BE INDEXED

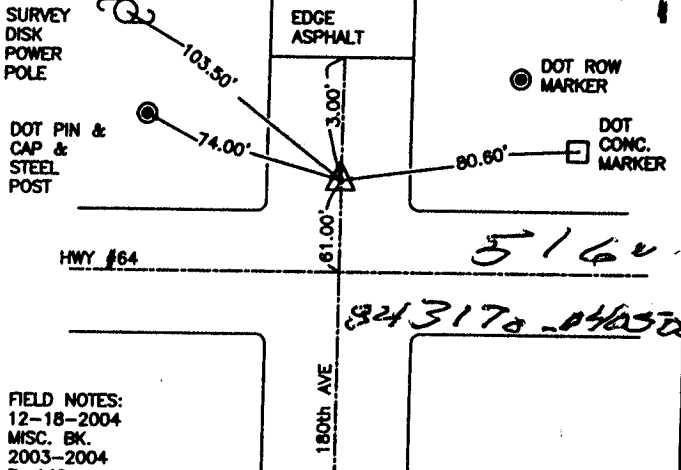
CORNER SECTION TOWNSHIP RANGE
S1/4 17 84N 3W
OFFICE FILE NO.



PREVIOUSLY RECORDED IN BOOK NA, PAGE NA
MONUMENT DESCRIPTION AND HOW ESTABLISHED _____
PER DOT TIES ON RECORD IN JONES COUNTY ENGINEER'S
OFFICE, FOUND 2' STEEL POST BETWEEN WOOD FENCE
CORNERS. RETIED AS INDICATED. S1/4 SECTION 17 T84N R3W.

CORNERS TO BE INDEXED

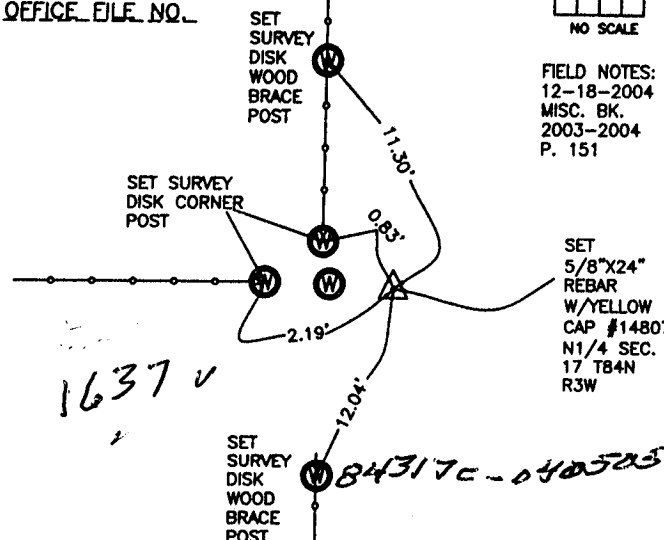
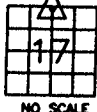
CORNER SECTION TOWNSHIP RANGE
E1/4 17 84N 3W
OFFICE FILE NO.



PREVIOUSLY RECORDED IN BOOK NA, PAGE NA
MONUMENT DESCRIPTION AND HOW ESTABLISHED _____
PER FOUND TIES OF RECORD IN JONES CO. RECORDER'S
OFFICE, SET PK NAIL IN ASPHALT. METAL DETECTED UNDER
CROSSING OF TIES. NEW TIES AS INDICATED. E1/4 SECTION 17
T84N R3W.

CORNERS TO BE INDEXED

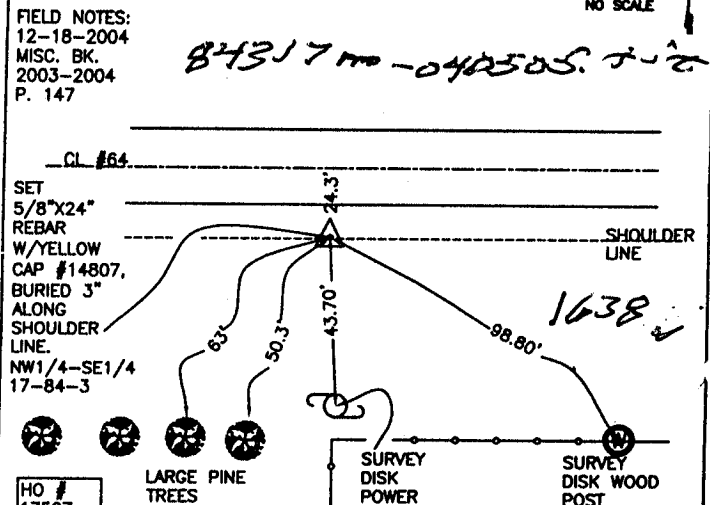
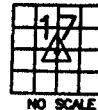
CORNER SECTION TOWNSHIP RANGE
N1/4 17 84N 3W
OFFICE FILE NO.



PREVIOUSLY RECORDED IN BOOK NA, PAGE NA
MONUMENT DESCRIPTION AND HOW ESTABLISHED _____
PER PHYSICAL EVIDENCE AT FENCE CORNERS, WITH FENCE LINES
NORTH-SOUTH-WEST, & ON SPLIT BETWEEN FOUND NW CORNER AND
FOUND NE CORNER SECTION 17, SET 5/8\"/>

CORNERS TO BE INDEXED

CORNER SECTION TOWNSHIP RANGE
NW1/4-SE1/4 17 84N 3W
OFFICE FILE NO.



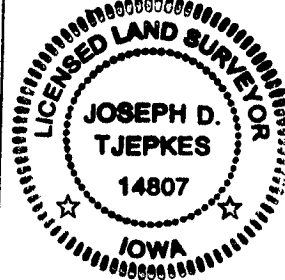
PREVIOUSLY RECORDED IN BOOK NA, PAGE NA
MONUMENT DESCRIPTION AND HOW ESTABLISHED _____
PER BREAKDOWN OF SECTION 17, LINES FROM W1/4 TO E1/4 & S1/4 TO
N1/4, AT CROSSING, SET 5/8\"/>

I hereby declare that this plat, survey or report was made by me or under my direct personal supervision and that I am a duly registered Land Surveyor under the laws of the State of Iowa.

Signed: *[Signature]* 4-05-05

Joseph D. Tjepkes L.S. Iowa Reg. No. 14807
My Registration Renewal Date is December 31, 2006

SEAL



J.D. TJEPKES LS 14807
23428 RIDGE ROAD
ANAMOSA, IOWA, 52205
(319-462-3785)

M

2000 2883

FILED
RECORDERS OFFICE
JONES COUNTY IOWA

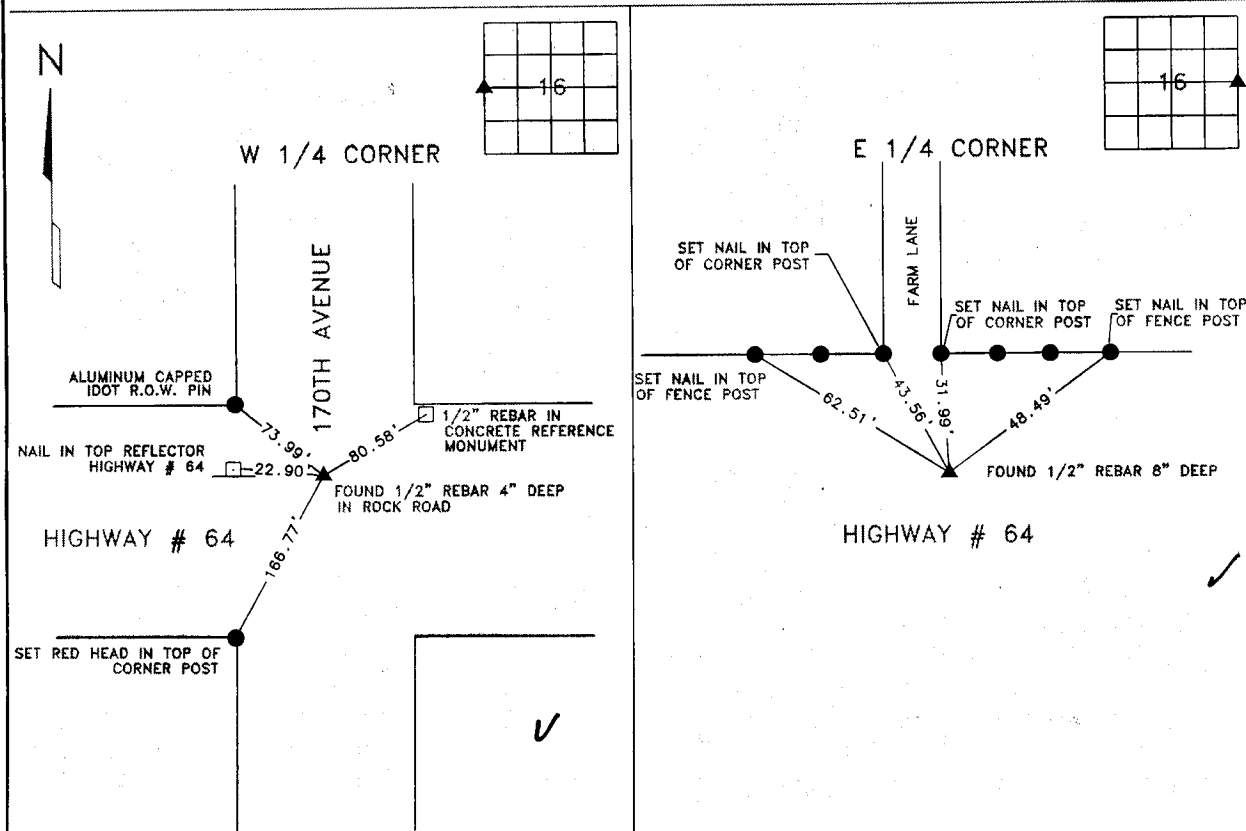
00 SEP 20 PM 1:29

MARIE KRUTZFIELD
RECORDER 6.00pd

CLARENCE J. WALTON, LS # 11310, WALTON LAND SURVEYING, P.C., 2213 LAUREN DR. SW, CEDAR RAPIDS, IOWA 52404, (319) 363-4271

UNITED STATES PUBLIC LAND
SURVEY CORNER CERTIFICATE

LAND SURVEY MONUMENTS SITUATED IN SECTION 16, TOWNSHIP 84 NORTH, RANGE 3 WEST
OF THE 5TH PRINCIPAL MERIDIAN, JONES COUNTY, IOWA



MONUMENT DESCRIPTION AND REMARKS
FOUND 1/2" REBAR 4" DEEP IN ROCK ROAD USING I.D.O.T. CORNER TIES

MONUMENT DESCRIPTION AND REMARKS
FOUND 1/2" REBAR 8" DEEP USING I.D.O.T. TIES

NOTE: ALL MEASUREMENTS IN FEET AND DECIMALS THEREOF.

I hereby certify that this land surveying document and the related survey work was performed by me or under my direct personal supervision and that I am a duly licensed Land Surveyor under the laws of the State of Iowa.

Signed *Clarence J. Walton* Date *9/20/00*

Clarence J. Walton, L.S.
My License Renewal Date is December 31, 2001
License Number 11310
Pages or sheets covered by this seal: 1 of 1

CORNERS	CORNERS TO BE INDEXED		
	SECTION	TWP	RANGE
W 1/4	16	84N	3W
E 1/4	16	84N	3W

PROJECT No: 10090-2S	Title: UNITED STATES PUBLIC LAND SURVEY CORNER CERTIFICATE	WALTON LAND SURVEYING, P.C. 2213 LAUREN DRIVE SW CEDAR RAPIDS, IOWA 52404 (319) 363-4271	Drawn: CJW	Book: 3
			9/15/00	Scale: NONE