

FILED
RECORDERS OFFICE
JONES COUNTY IOWA

05 APR -6 PM 4:13

MARIE KRUTZFIELD
RECORDER 7:00 PM

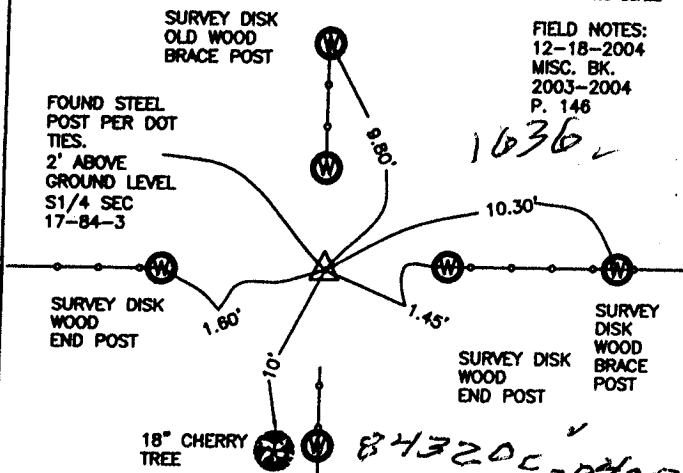
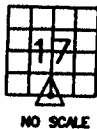
J.D. TJEPKES, LS. 14807, 23428 RIDGE ROAD, ANAMOSA, IOWA, 52205 (319-462-6067)

UNITED STATES PUBLIC LAND SURVEY CORNER CERTIFICATE

LAND SURVEY MONUMENTS SITUATED IN SECTION 17, TOWNSHIP 84
NORTH, RANGE 3 WEST OF THE 5TH P.M., JONES COUNTY, IOWA

CORNERS TO BE INDEXED

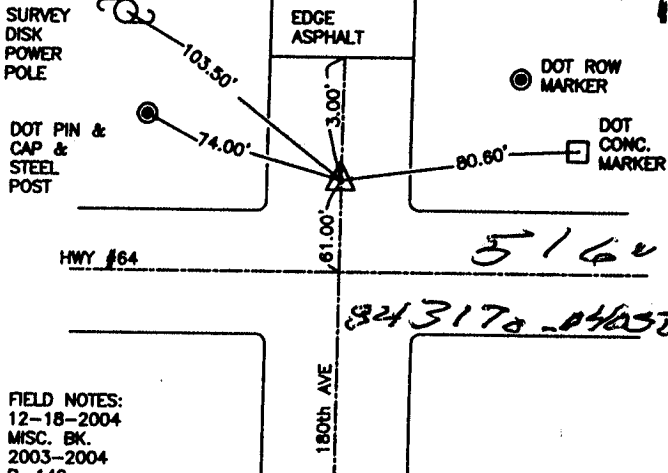
CORNER SECTION TOWNSHIP RANGE
S1/4 17 84N 3W
OFFICE FILE NO.



PREVIOUSLY RECORDED IN BOOK NA, PAGE NA
MONUMENT DESCRIPTION AND HOW ESTABLISHED
PER DOT TIES ON RECORD IN JONES COUNTY ENGINEER'S
OFFICE, FOUND 2' STEEL POST BETWEEN WOOD FENCE
CORNERS. RETIED AS INDICATED. S1/4 SECTION 17 T84N R3W.

CORNERS TO BE INDEXED

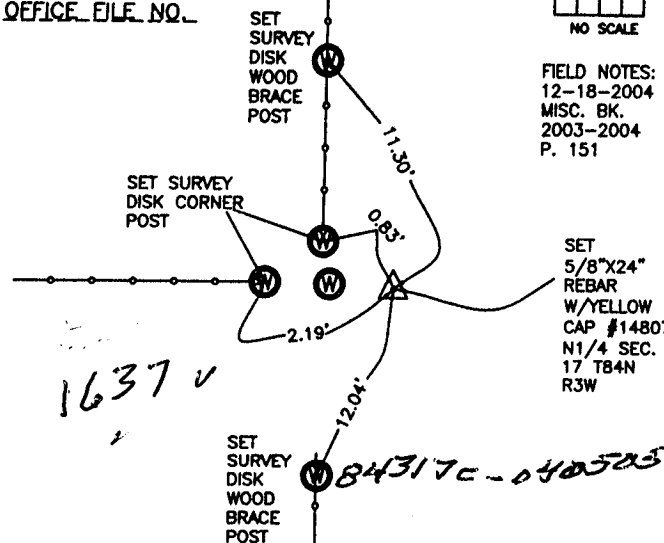
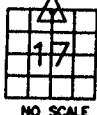
CORNER SECTION TOWNSHIP RANGE
E1/4 17 84N 3W
OFFICE FILE NO.



PREVIOUSLY RECORDED IN BOOK NA, PAGE NA
MONUMENT DESCRIPTION AND HOW ESTABLISHED
PER FOUND TIES OF RECORD IN JONES CO. RECORDER'S
OFFICE, SET PK NAIL IN ASPHALT. METAL DETECTED UNDER
CROSSING OF TIES. NEW TIES AS INDICATED. E1/4 SECTION 17
T84N R3W.

CORNERS TO BE INDEXED

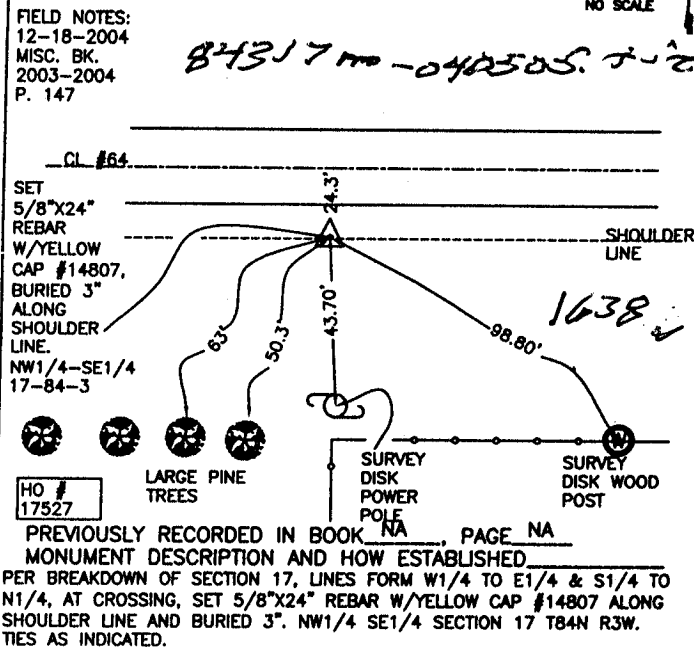
CORNER SECTION TOWNSHIP RANGE
N1/4 17 84N 3W
OFFICE FILE NO.



PREVIOUSLY RECORDED IN BOOK NA, PAGE NA
MONUMENT DESCRIPTION AND HOW ESTABLISHED
PER PHYSICAL EVIDENCE AT FENCE CORNERS, WITH FENCE LINES
NORTH-SOUTH-WEST, & ON SPLIT BETWEEN FOUND NW CORNER AND
FOUND NE CORNER SECTION 17, SET 5/8\"/>

CORNERS TO BE INDEXED

CORNER SECTION TOWNSHIP RANGE
NW1/4-SE1/4 17 84N 3W
OFFICE FILE NO.



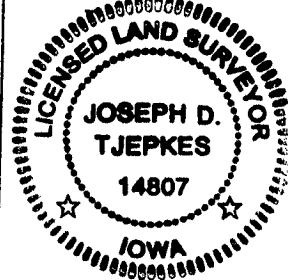
PREVIOUSLY RECORDED IN BOOK NA, PAGE NA
MONUMENT DESCRIPTION AND HOW ESTABLISHED
PER BREAKDOWN OF SECTION 17, LINES FROM W1/4 TO E1/4 & S1/4 TO
N1/4, AT CROSSING, SET 5/8\"/>

I hereby declare that this plat, survey or report was made by me or under my direct personal supervision and that I am a duly registered Land Surveyor under the laws of the State of Iowa.

Signed: *[Signature]* 4-05-05

Joseph D. Tjepkes L.S. Iowa Reg. No. 14807
My Registration Renewal Date is December 31, 2006

SEAL



J.D. TJEPKES LS 14807
23428 RIDGE ROAD
ANAMOSA, IOWA, 52205
(319-462-3785)