

FEEBOOK: 2006 3703 10/03/2006 10:53 A.M.
 REC FEES: \$7.00 PAGES: 1

MARIE KRUTZFIELD, RECORDER
 JONES COUNTY, IOWA

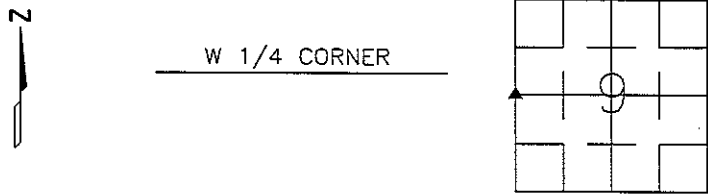
PREPARED BY

STEPHEN MICHAEL BRAIN, BRAIN ENGINEERING, INC., 1540 MIDLAND COURT NE, CEDAR RAPIDS, IOWA PH. (319) 294-9424

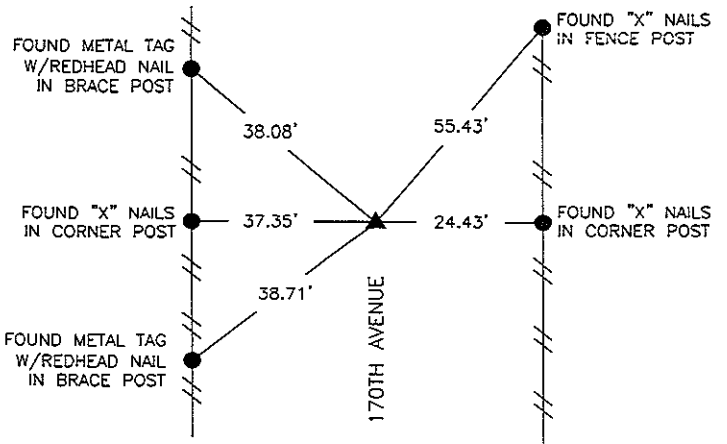
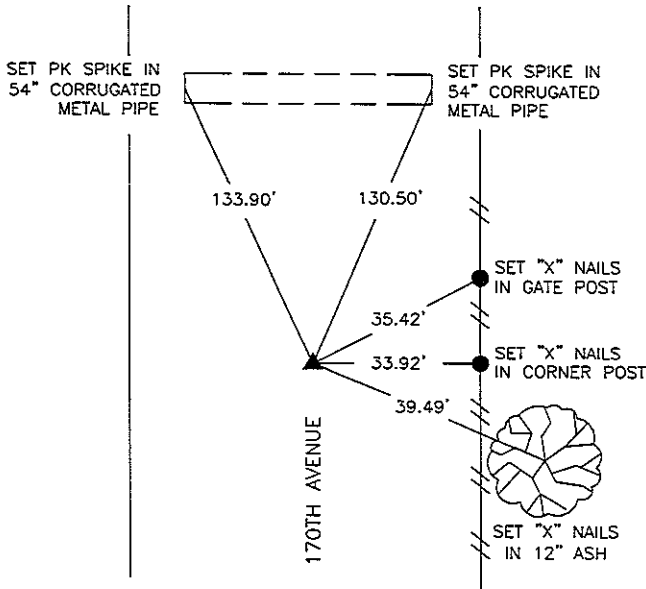
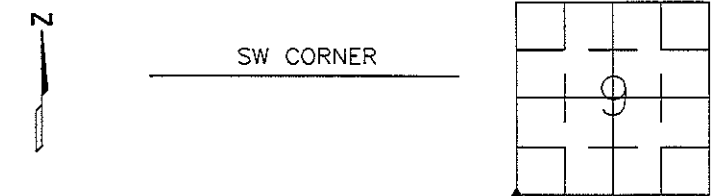
UNITED STATES PUBLIC LAND SURVEY CORNER CERTIFICATE

LAND SURVEY MONUMENTS SITUATED IN SECTION 9, TOWNSHIP 84 NORTH
 RANGE 3 WEST OF THE 5TH P.M., _____ JONES _____ COUNTY, IOWA.

NO SCALE

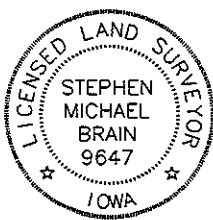


NO SCALE



PREVIOUSLY RECORDED IN BOOK _____ PAGE _____
 MONUMENT DESCRIPTION AND HOW ESTABLISHED _____
 FOUND 1/2" REBAR 4" BELOW SURFACE USING JONES
 COUNTY ENGINEERING DEPARTMENT TIES.

PREVIOUSLY RECORDED IN BOOK _____ PAGE _____
 MONUMENT DESCRIPTION AND HOW ESTABLISHED _____
 FOUND 5/8" REBAR 4" BELOW SURFACE USING JONES
 COUNTY ENGINEERING DEPARTMENT TIES.



I hereby certify that this land surveying document and the related survey work was performed by me or under my direct personal supervision and that I am a duly licensed Land Surveyor under the laws of the State of Iowa.
 Signed _____ Date 9/29/06

Stephen Michael Brain, L.S.
 My License Renewal Date Is December 31, 2006
 License Number 9647
 Pages or sheets covered by this seal: 1/1

- A.THERE IS NO CERTIFICATE FOR THE CORNER ON FILE WITH THE RECORDER OF THE COUNTY IN WHICH THE CORNER IS LOCATED
- B.THE SURVEYOR IN RESPONSIBLE CHARGE OF THE LAND SURVEYING ACCEPTS A CORNER POSITION WHICH DIFFERS FROM THAT SHOWN IN THE PUBLIC RECORDS OF THE COUNTY IN WHICH THE CORNER IS LOCATED.
- C.THE CORNER MONUMENT IS REPLACED OR MODIFIED IN ANY WAY.
- D.THE REFERENCE TIES REFERRED TO IN AN EXISTING PUBLIC RECORD ARE NOT CORRECT.

CORNERS TO BE INDEXED

CORNER	SECTION	TOWNSHIP	RANGE
W 1/4 CORNER	9	T84N	R 3 W
SW CORNER	9	T84N	R 3 W

BRAIN ENGINEERING, INC.
 1540 MIDLAND COURT NE
 CEDAR RAPIDS, IOWA 52402
 (319) 294-9424

222006-10
 VSM

THIS IS NOT A CERTIFICATION

JONES COUNTY ENGINEER'S OFFICE, 19501 HWY. 64, ANAMOSA, IOWA, 52205 (319)462-3785

UNITED STATES PUBLIC LAND SURVEY CORNER CERTIFICATE

LAND SURVEY MONUMENTS SITUATED IN SECTION 17, TOWNSHIP 84
NORTH, RANGE 3 WEST OF THE 5TH P.M., JONES COUNTY, IOWA

CORNERS TO BE INDEXED

CORNER N-QUARTER	SECTION 17	TOWNSHIP 84N	RANGE 3W
---------------------	---------------	-----------------	-------------

OFFICE FILE NO. _____
84317c_040604.tif

REF: JONES COUNTY CORNER STONE BOOK/ 20, PAGE 71

FD. LIMESTONE 3" UNDER SURFACE N1/4-84-3

INFORMATION TAKEN FROM INDEX CARDS IN ENGINEER'S OFFICE.

PREVIOUSLY RECORDED IN BOOK _____, PAGE _____
MONUMENT DESCRIPTION AND HOW ESTABLISHED FOUND

LIMESTONE ON FENCE LINE 3' SOUTH OF FENCE INTERSECTION 3" BELOW SURFACE. TIES AS INDICATED. NORTH QUARTER CORNER SECTION 17, TOWNSHIP 84 NORTH, RANGE 3 WEST OF THE 5TH PRINCIPAL MERIDIAN, JONES COUNTY, IOWA.

CORNERS TO BE INDEXED

CORNER NORTHEAST	SECTION 17	TOWNSHIP 84N	RANGE 3W
---------------------	---------------	-----------------	-------------

OFFICE FILE NO. _____
84317e_040604.tif

REF: PROJECT NO. F-64-1(2)--20-53
5-25-76
DOT SET DOT MONUMENT.
NE-17-84-3

COUNTY SURVEY CREW-4-2-74
FD. 6"X8"X10" GRANITE STONE 48" BELOW SURFACE

X-NAILS IN FENCE POST

X-NAILS IN COR. POST

X-NAILS IN FENCE POST

X-NAILS IN COR. POST

X-NAILS IN FENCE POST

X-NAILS IN MULBERRY TREE

1639

PREVIOUSLY RECORDED IN BOOK _____, PAGE _____
MONUMENT DESCRIPTION AND HOW ESTABLISHED 4-2-74

COUNTY SURVEY CREW FOUND 6"X8"10" GRANITE STONE 48" BELOW SURFACE. 5-25-76, DOT SET DOT MONUMENT. SET REFERENCE POINTS AND TIED OUT AS INDICATED. NORTHEAST CORNER SECTION 17, TOWNSHIP 84 NORTH, RANGE 3 WEST OF THE 5TH PRINCIPAL MERIDIAN, JONES COUNTY, IOWA.

CORNERS TO BE INDEXED

CORNER	SECTION	TOWNSHIP	RANGE
--------	---------	----------	-------

OFFICE FILE NO. _____

NO SCALE

PREVIOUSLY RECORDED IN BOOK _____, PAGE _____
MONUMENT DESCRIPTION AND HOW ESTABLISHED _____

CORNERS TO BE INDEXED

CORNER	SECTION	TOWNSHIP	RANGE
--------	---------	----------	-------

OFFICE FILE NO. _____

NO SCALE

PREVIOUSLY RECORDED IN BOOK _____, PAGE _____
MONUMENT DESCRIPTION AND HOW ESTABLISHED _____

~~I hereby declare that this plat, survey or report was made by me or under my direct personal supervision and that I am a duly registered Land Surveyor under the laws of the State of Iowa.~~

Signed: _____

SEAL

JONES COUNTY ENGINEER'S OFFICE

19501 HWY. 64,
ANAMOSA, IOWA,
52205 (319)462-3785