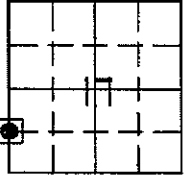


Marie Krutzfield, Recorder  
Jones County, Iowa

Prepared by: Richard M. Kordick, P.E., L.S., 120 East Main, Suite D, Anamosa, IA 52205 Phone: (319) 462-4498

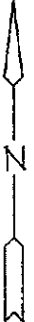
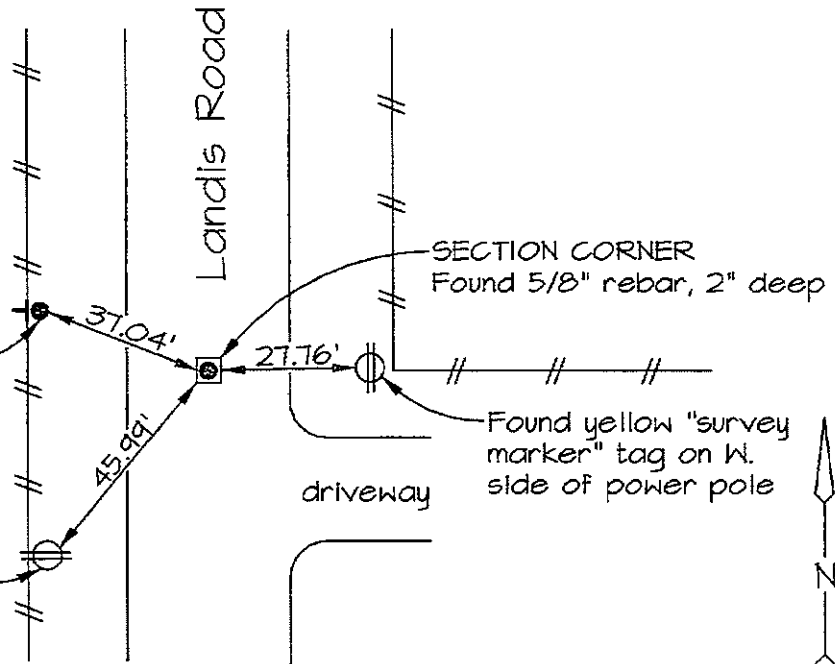
U.S. PUBLIC LAND SURVEY CORNER CERTIFICATE



NW Corner,  
SW 1/4 SW 1/4  
17-84N-3W  
Jones County  
JACKSON Township

Set 1/2" rebar, 4" high on  
E. side of steel fence post

Found yellow "survey  
marker" tag on NE.  
side of power pole



Plan-View No Scale

Reason for corner tie:

- A) There is no certificate for the corner on file with the recorder.
- B) Corner position differs from previously recorded certificate recorded in book , page
- C) Corner monument was replaced or modified.
- D) Reference ties in previously recorded certificate recorded in book , page are incorrect or missing.

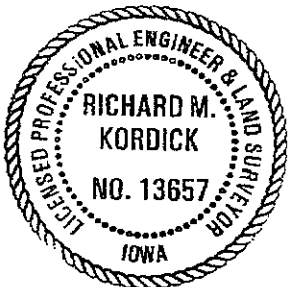
Research at the recorder's office, auditor's office, and engineer's office revealed the following:  
A Plat of Survey 2005-134 as recorded in Recorder's Office Document No. 2005-2233 called for a "set 5/8"x24" rebar w/ yellow cap #14801" at this corner.

Field search performed was as follows:

Field search was performed with a metal detector and excavation.

Monument found or set:

A 5/8" rebar as per the Plat of Survey 2005-134 was found and used as the corner.



I hereby certify that this land surveying document was prepared and the related survey work was performed by me or under my direct personal supervision and that I am a duly licensed Land Surveyor under the laws of the State of Iowa.

*Richard M. Kordick* 3/3/2008  
Richard M. Kordick date  
License number 13657  
My license renewal date is December 31, 2009.  
Pages or sheets covered by this seal: 1 of 1

LEGEND:

- Section Corner as noted
- Power Pole
- Section line
- - - Centerline
- || || || Existing Fence
- ( ) Recorded Dist.

Kordick Surveying  
& Engineering  
120 East Main, Suite D  
Anamosa, Iowa 52205  
(319) 462-4498

U.S. Public Land  
Survey Corner Certificate

Project: Plat of Survey  
Parcel No. 2008-45

Field BK  
08021  
Date  
3-3-08  
Job No.  
08021  
Sheet  
1 of 1

2005 2329

FILED  
RECORDERS OFFICE  
JONES COUNTY IOWA

05 JUL -5 AM 8:49

MARIE KRUTZFIELD 7:00 PD

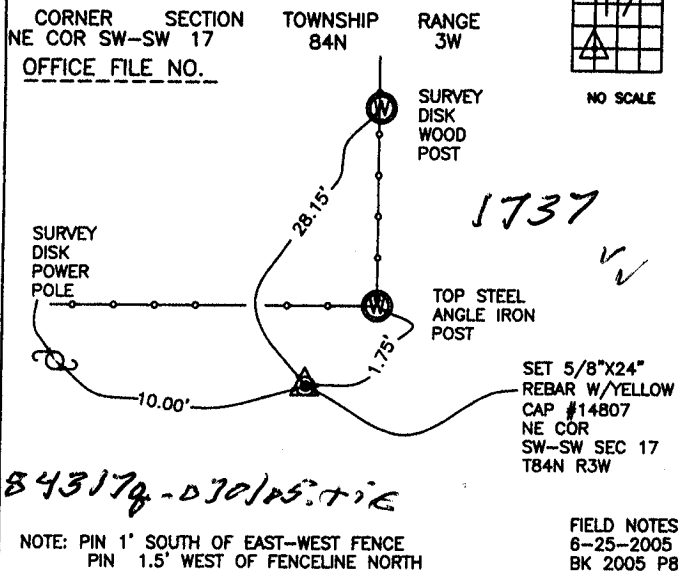
RECORDER

J.D. TJEPKES, LS. 14807, 23428 RIDGE ROAD, ANAMOSA, IOWA, 52205 (319-462-6067)

# UNITED STATES PUBLIC LAND SURVEY CORNER CERTIFICATE

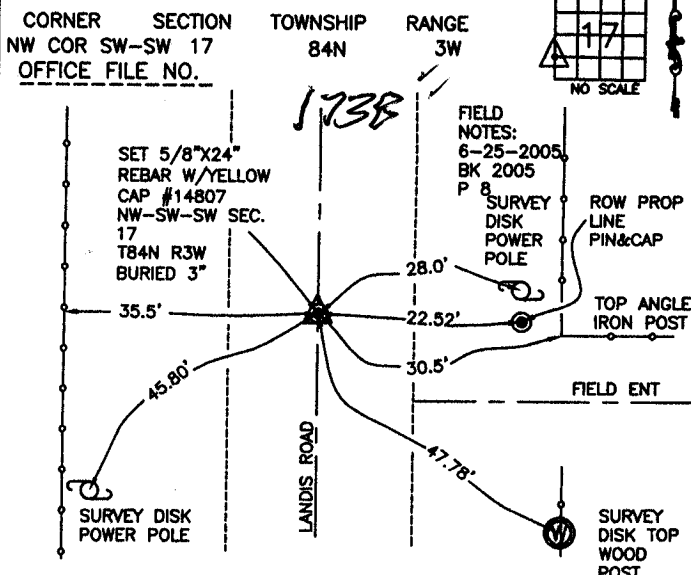
LAND SURVEY MONUMENTS SITUATED IN SECTION 17, TOWNSHIP 84  
NORTH, RANGE 3 WEST OF THE 5TH P.M., JONES COUNTY, IOWA

### CORNERS TO BE INDEXED



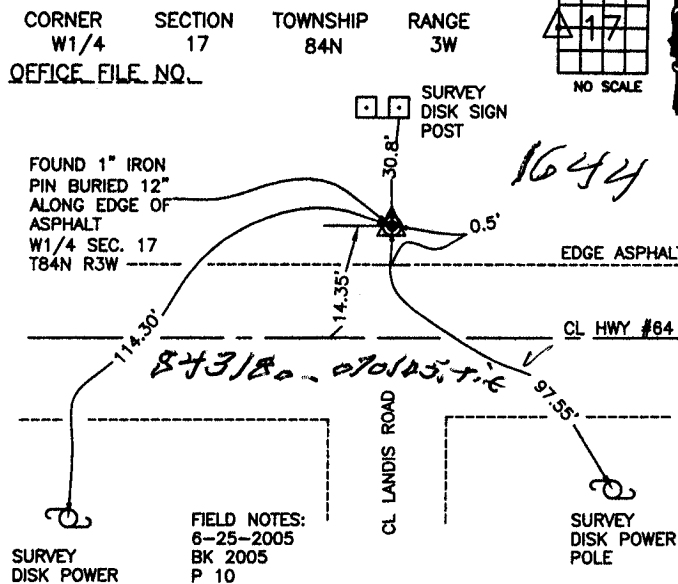
PREVIOUSLY RECORDED IN BOOK NA, PAGE NA  
MONUMENT DESCRIPTION AND HOW ESTABLISHED  
PER BREAKDOWN OF SW 1/4 SECTION 17 T84N R3W, SET 5/8"X24" REBAR W/YELLOW CAP #14807, 3" ABOVE PRESENT GROUND. TIES AS INDICATED FOR NE CORNER SW 1/4 SW 1/4 SECTION 17 T84N R3W.

### CORNERS TO BE INDEXED



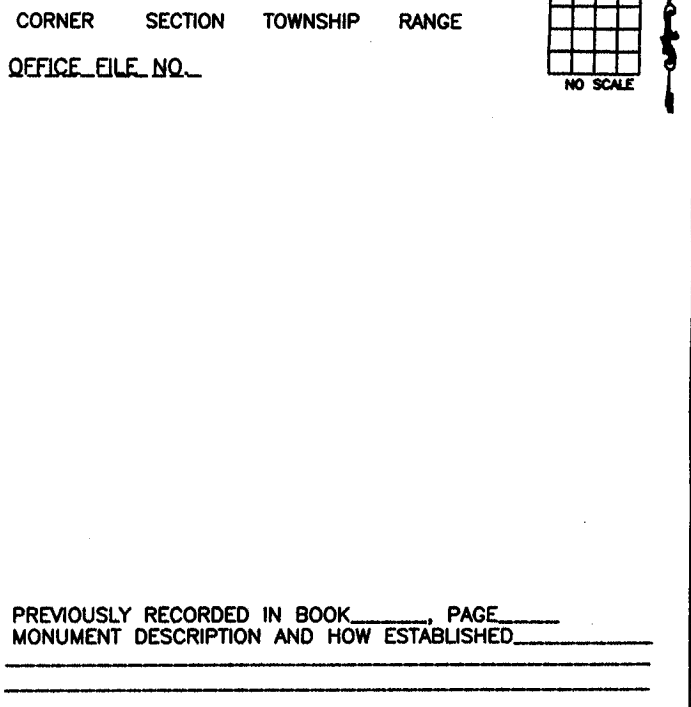
PREVIOUSLY RECORDED IN BOOK NA, PAGE NA  
MONUMENT DESCRIPTION AND HOW ESTABLISHED  
PER BREAKDOWN OF SW 1/4 SECTION 17 T84N R3W, SET 5/8"X24" REBAR W/YELLOW CAP #14807 BURIED 3" IN CENTERLINE LANDIS ROAD. TIES AS INDICATED FOR NW CORNER SW 1/4 SW 1/4 SECTION 17 T84N R3W.

### CORNERS TO BE INDEXED



PREVIOUSLY RECORDED IN BOOK NA, PAGE NA  
MONUMENT DESCRIPTION AND HOW ESTABLISHED  
PER OLD TIES ON FILE IN JONES CO. ENGINEER'S OFFICE, FROM I.D.O.T. HWY #64, FOUND 1" IRON PIN BURIED 12", 0.5' NORTH OF EDGE OF ASPHALT, AND 14.35' NORTH OF CENTERLINE #64. TIES AS INDICATED FOR W 1/4 SECTION 17 T84N R3W.

### CORNERS TO BE INDEXED



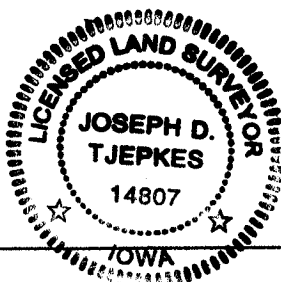
I hereby declare that this plat, survey or report was made by me or under my direct personal supervision and that I am a duly registered Land Surveyor under the laws of the State of Iowa.

Signed:

*[Signature]* J.D. Tjepkes

Joseph D. Tjepkes L.S. Iowa Reg. No. 14807  
My Registration Renewal Date is December 31, 2006

SEAL



J.D. TJEPKES LS 14807  
23428 RIDGE ROAD  
ANAMOSA, IOWA, 52205  
(319)-462-6067