

2003 4726

FILED
RECORDERS OFFICE
JONES COUNTY IOWA

03 SEP 26 AM 9:12

MARIE KRUTZFIELD
RECORDER *No Fee*

J.D. TJEPKES, LS. JONES COUNTY ENGINEER'S OFFICE, 19501 HWY. 64, ANAMOSA, IOWA, 52205 (319)462-3785

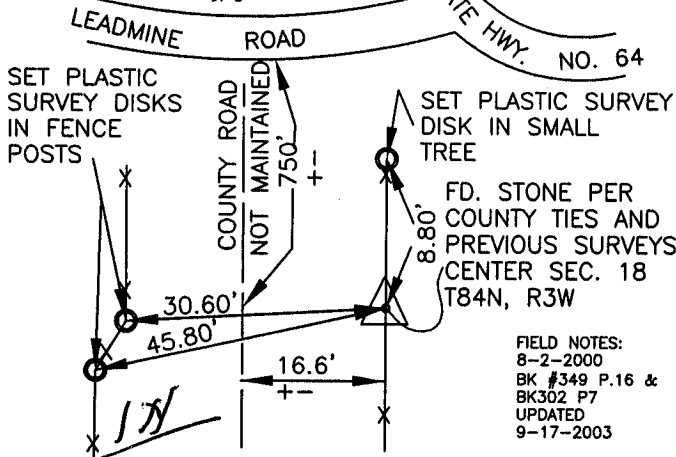
UNITED STATES PUBLIC LAND SURVEY CORNER CERTIFICATE

LAND SURVEY MONUMENTS SITUATED IN SECTION 18 TOWNSHIP 84
NORTH, RANGE 3 WEST OF THE 5TH P.M., JONES COUNTY, IOWA

CORNERS TO BE INDEXED

CORNER SECTION TOWNSHIP RANGE
CENTER 18 84N 3W

OFFICE FILE NO.
84318m_091703.jpg



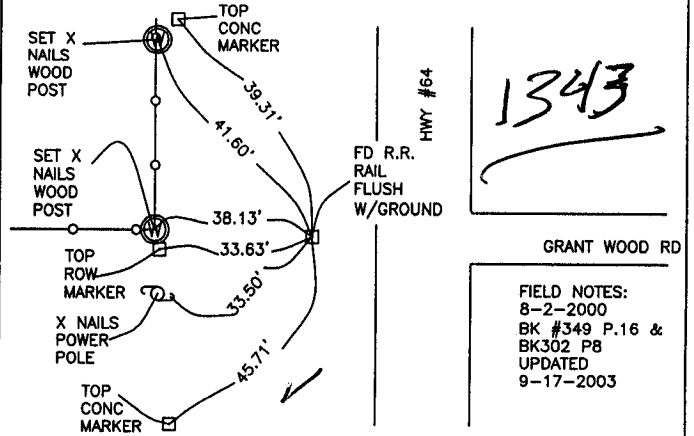
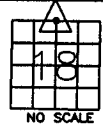
FIELD NOTES:
8-2-2000
BK #349 P.16 &
BK302 P7
UPDATED
9-17-2003

PREVIOUSLY RECORDED IN BOOK 2001, PAGE 0359
MONUMENT DESCRIPTION AND HOW ESTABLISHED FOUND STONE
PER TIES AT JONES COUNTY ENGINEER'S OFFICE-PROJ. NO. C-698 (1987)
AND PER PREVIOUS SURVEY BY DILLON ENGINEERING OF IOWA CITY.
SET MAGNET ALONGSIDE STONE, SET NEW REFERENCE POINTS AND TIED OUT
AS INDICATED. CENTER SEC. 18, T84N, R3W, JONES COUNTY, IOWA

CORNERS TO BE INDEXED

CORNER SECTION TOWNSHIP RANGE
N1/4 18 84N 3W

OFFICE FILE NO.
84318c_091703.jpg

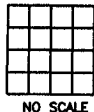


FIELD NOTES:
8-2-2000
BK #349 P.16 &
BK302 P8
UPDATED
9-17-2003

PREVIOUSLY RECORDED IN BOOK NA, PAGE NA
MONUMENT DESCRIPTION AND HOW ESTABLISHED _____
PER TIES IN JONES COUNTY ENGINEER'S OFFICE BK #349 P.16,
& BK #302 P.8, FOUND R.R. RAIL BURIED 4". RETIED AS
INDICATED.

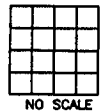
CORNERS TO BE INDEXED

CORNER SECTION TOWNSHIP RANGE



CORNERS TO BE INDEXED

CORNER SECTION TOWNSHIP RANGE



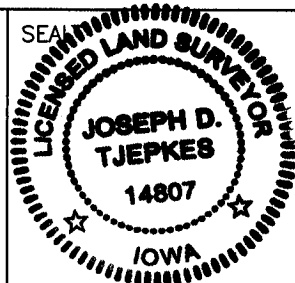
PREVIOUSLY RECORDED IN BOOK _____, PAGE _____
MONUMENT DESCRIPTION AND HOW ESTABLISHED _____

PREVIOUSLY RECORDED IN BOOK _____, PAGE _____
MONUMENT DESCRIPTION AND HOW ESTABLISHED _____

I hereby declare that this plat, survey or report was made by me or under my direct personal supervision and that I am a duly registered Land Surveyor under the laws of the State of Iowa.

Signed

Joseph D. Tjepkes 9.26.03
Joseph D. Tjepkes L.S. Iowa Reg. No. 14807
My Registration Renewal Date is December 31, 2004



J.D. TJEPKES LS 14807
JONES COUNTY
ENGINEER'S OFFICE

19501 HWY. 64,
ANAMOSA, IOWA,
52205 (319)462-3785

J