

2000 2261  
 FILED  
 RECORDERS OFFICE  
 JONES COUNTY IOWA

00 JUL 21 AM 10:17

MARIE KRUTZFIELD  
 RECORDER 6.00 Pd

*Jackson*

CLARENCE J. WALTON, BRAIN ENGINEERING, INC., 777 10TH STREET, MARION, IOWA 52302 PH. (319) 373-1318

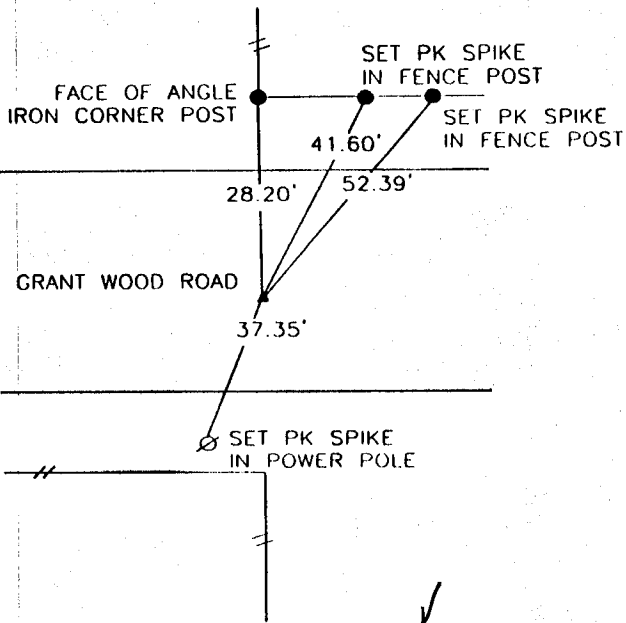
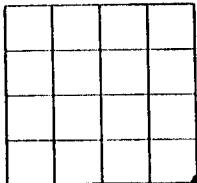
# UNITED STATES PUBLIC LAND SURVEY CORNER CERTIFICATE

LAND SURVEY MONUMENTS SITUATED IN SECTION 7, TOWNSHIP 84 NORTH  
 RANGE 3 WEST OF THE 5TH P.M., \_\_\_\_\_ JONES COUNTY, IOWA.

NO SCALE



SE CORNER

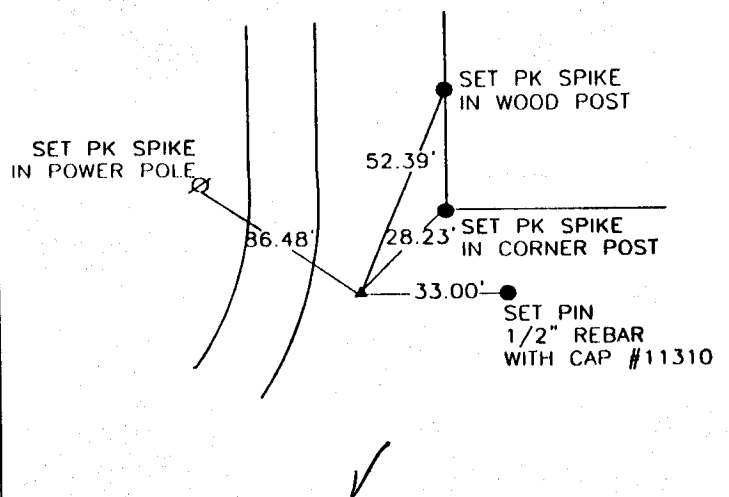
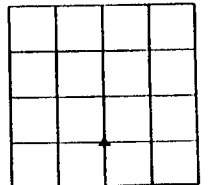


PREVIOUSLY RECORDED IN BOOK \_\_\_\_\_ PAGE \_\_\_\_\_  
 MONUMENT DESCRIPTION AND HOW ESTABLISHED \_\_\_\_\_  
 FOUND 1/2" REBAR IN CONCRETE 6" DEEP.

NO SCALE



NW CORNER SW 1/4 SE 1/4



PREVIOUSLY RECORDED IN BOOK \_\_\_\_\_ PAGE \_\_\_\_\_  
 MONUMENT DESCRIPTION AND HOW ESTABLISHED \_\_\_\_\_  
 SET 1/2" REBAR WITH YELLOW CAP #11310



I hereby certify that this land surveying document and the related survey work was performed by me or under my direct personal supervision and that I am a duly licensed Land Surveyor under the laws of the State of Iowa.  
 Signed *Clarence J. Walton* Date 7/17/00  
 Clarence J. Walton, L.S.  
 My License Renewal Date is December 31, ~~1999~~ 2001  
 License Number 11310  
 Pages or sheets covered by this seal: 1 of 1

CORNERS TO BE INDEXED

CORNER	SECTION	TOWNSHIP	RANGE
SE CORNER	7	T84N	R3W
NW CORNER	7	T84N	R3W
SW 1/4 SE 1/4	7	T84N	R3W

**BRAIN ENGINEERING, INC.**

777 10TH STREET  
 MARION, IOWA 52302 25519-10  
 (319) 373-1318