

COPY

Marie Krutzfield, Recorder
Jones County, Iowa

PREPARED BY

CLARENCE J. WALTON, JONES COUNTY ENGINEER'S OFFICE, 19501 HWY. 64, ANAMOSA, IOWA, 52205 (319) 462-3785

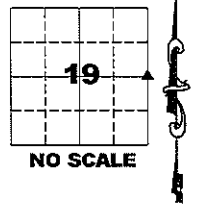
UNITED STATES PUBLIC LAND SURVEY CORNER CERTIFICATE

LAND SURVEY MONUMENTS SITUATED IN SECTION 19, TOWNSHIP 84 NORTH,
RANGE 3 WEST OF THE 5TH PRINCIPAL MERIDIAN, JONES COUNTY, IOWA.

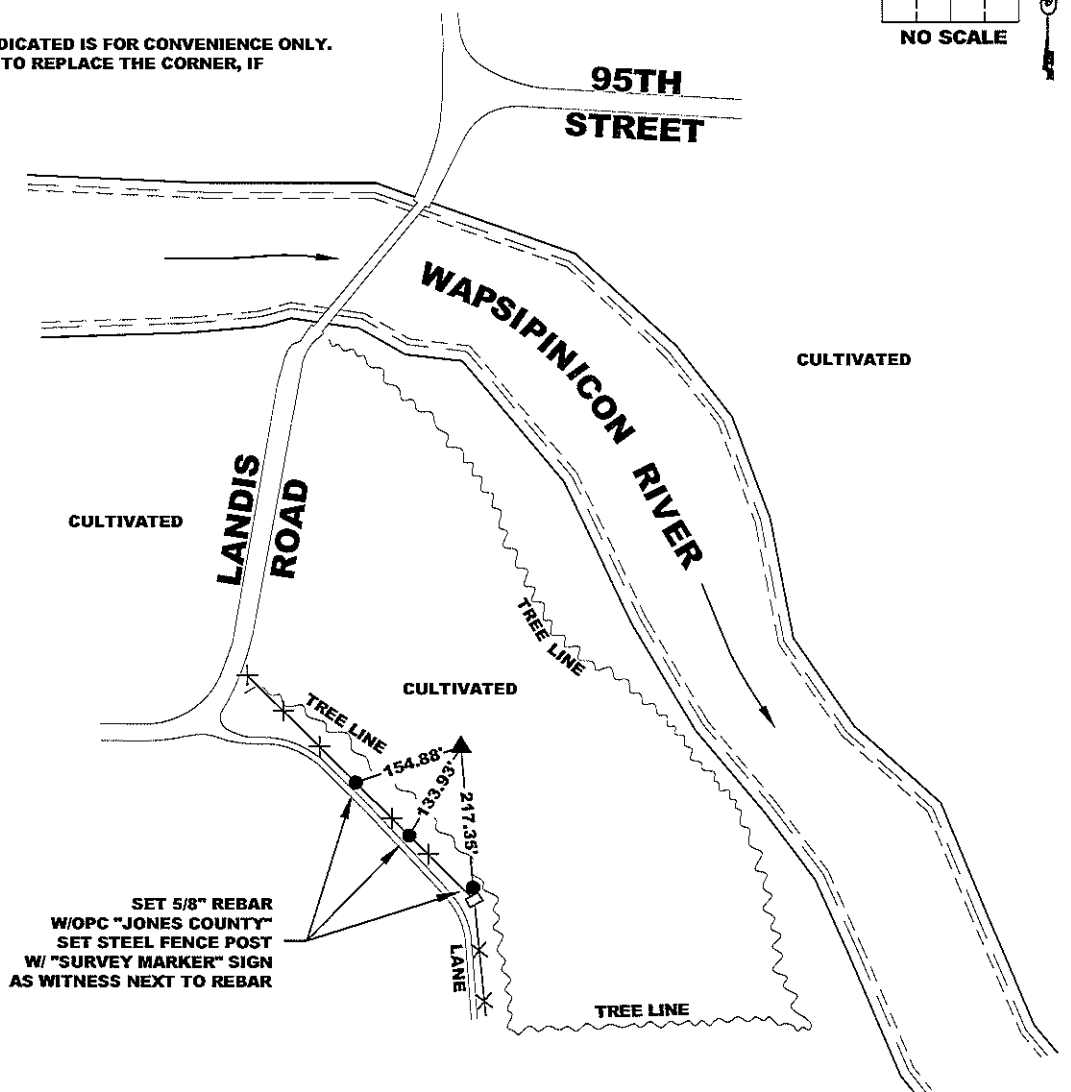
OFFICE FILE NO.

STATE PLANE COORDINATE
NAD 83 IOWA NORTH
N 3496896.67
E 5537740.85

CORNER SECTION TOWNSHIP RANGE
E 1/4 CORNER 19 T84N R3W



NOTE:
THE STATE PLANE COORDINATE AS INDICATED IS FOR CONVENIENCE ONLY.
THE TIES AS SHOWN SHOULD BE USED TO REPLACE THE CORNER, IF
DESTROYED

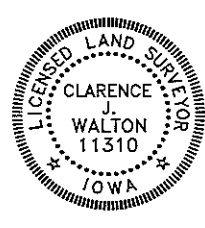


- X—X— FENCE LINE
- OPC ORANGE PLASTIC CAP
- () RECORDED AS

PREVIOUSLY RECORDED IN RECORDER'S DOCUMENT 2005 1927

MONUMENT DESCRIPTION AND HOW ESTABLISHED FOUND 1/2" REBAR 15" BELOW SURFACE WITH ROAD GRADER BLADE ALONG SIDE. MOST OF PREVIOUSLY RECORDED TIES HAVE BEEN DESTROYED. LARGE AMOUNT OF FENCE WIRE IN GROUND IN VICINITY MADE CORNER DIFFICULT TO FIND. SET NEW TIES ACCORDINGLY TO FACILITATE RECOVERY OF CORNER. TO GET TO APPROXIMATE LOCATION OF CORNER, LINE IN WITH SOUTH DITCH LINE OF LANDIS ROAD TO THE WEST AND WITH THE CENTERLINE OF THE TRAVELLED WAY OF LANDIS ROAD GOING OVER THE HILL TO THE NORTH ACROSS THE RIVER.

FIELD BOOK: MISC. 97-2000, PAGE 80. DATE OF SURVEY: 3/27/09



I hereby certify that this land surveying document and the related survey work was performed by me or under my direct personal supervision and that I am a duly registered Land Surveyor under the laws of the State of Iowa.
Signed: *Clarence J. Walton* 4/2/09
Clarence J. Walton, L.S.
My Registration Renewal Date is December 31, 2009
Iowa License Number 11310
Pages or sheets covered by this seal: 1 of 1.

- A. THERE IS NO CERTIFICATE FOR THE CORNER ON FILE WITH THE RECORDER OF THE COUNTY IN WHICH THE CORNER IS LOCATED.
- B. THE CORNER MONUMENT HAS BEEN REPLACED OR MODIFIED.
- C. THE SURVEYOR IN RESPONSIBLE CHARGE OF THE LAND SURVEYING ACCEPTS A CORNER POSITION THAT DIFFERS FROM THAT SHOWN IN THE PUBLIC RECORDS OF THE COUNTY IN WHICH THE CORNER IS LOCATED.
- D. THE REFERENCE TIES REFERRED TO IN AN EXISTING PUBLIC RECORD ARE MAINLY DESTROYED. SET NEW TIES.

CORNERS TO BE INDEXED			
CORNER	SECTION	TOWNSHIP	RANGE
E 1/4	19	84N	3W
W 1/4	20	84N	3W

JONES COUNTY ENGINEER'S OFFICE



19501 HWY. 64, ANAMOSA, IOWA 52205
(319) 462-3785

2005 1927

FILED
RECORDERS OFFICE
JONES COUNTY IOWA

05 JUN -6 PM 3:25

MARIE KRUTZFIELD

7.00 Pd

J.D. TJEPKES, LS. 14807, 23428 RIDGE ROAD, ANAMOSA, IOWA, 52205 (319-462-6067)

UNITED STATES PUBLIC LAND SURVEY CORNER CERTIFICATE

LAND SURVEY MONUMENTS SITUATED IN SECTION 19, TOWNSHIP 84
NORTH, RANGE 3 WEST OF THE 5TH P.M., JONES COUNTY, IOWA

CORNERS TO BE INDEXED

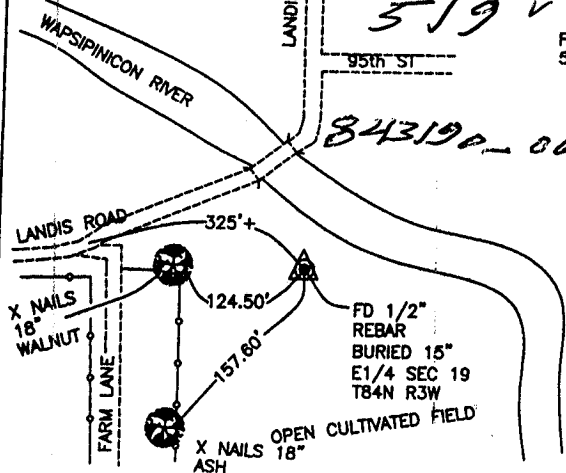
CORNER SECTION TOWNSHIP RANGE
E 1/4 19 84N 3W



NO SCALE

FIELD NOTES:
5-17-2005

OFFICE FILE NO.



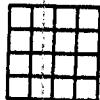
519 ✓

843190-060605-115

PREVIOUSLY RECORDED IN BOOK NA, PAGE NA
MONUMENT DESCRIPTION AND HOW ESTABLISHED _____
PER TIES OF RECORD FROM HALL & HALL, FOUND 1/2" IRON PIN BURIED 15" IN OPEN FIELD. SET MAGNET AND PART OF OLD GRADER BLADE ALONG SIDE OF IRON PIN AND RETIED AS INDICATED. E1/4 COR. SECTION 19 T84N R3W.

CORNERS TO BE INDEXED

CORNER SECTION TOWNSHIP RANGE



NO SCALE

OFFICE FILE NO.

PREVIOUSLY RECORDED IN BOOK _____, PAGE _____
MONUMENT DESCRIPTION AND HOW ESTABLISHED _____

CORNERS TO BE INDEXED

CORNER SECTION TOWNSHIP RANGE



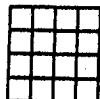
NO SCALE

OFFICE FILE NO.

PREVIOUSLY RECORDED IN BOOK _____, PAGE _____
MONUMENT DESCRIPTION AND HOW ESTABLISHED _____

CORNERS TO BE INDEXED

CORNER SECTION TOWNSHIP RANGE



NO SCALE

OFFICE FILE NO.

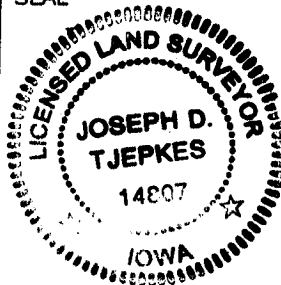
PREVIOUSLY RECORDED IN BOOK _____, PAGE _____
MONUMENT DESCRIPTION AND HOW ESTABLISHED _____

I hereby declare that this plat, survey or report was made by me or under my direct personal supervision and that I am a duly registered Land Surveyor under the laws of the State of Iowa.

Signed:

Joseph D. Tjepkes
Joseph D. Tjepkes L.S. Iowa Reg. No. 14807
My Registration Renewal Date is December 31, 2006

SEAL



J.D. TJEPKES LS 14807
23428 RIDGE ROAD
ANAMOSA, IOWA, 52205
(319)-462-6067

R

SECTION CORNER CERTIFICATE

OF
 LAND SURVEY MONUMENTS SITUATED IN SECTION 20, TOWNSHIP 84 NORTH,
 RANGE 3 WEST, OF THE FIFTH PRINCIPAL MERIDIAN, JONES, COUNTY, IOWA.

PREVIOUSLY RECORDED IN BOOK _____ AT PAGE _____ .

FOR RECORDER'S USE

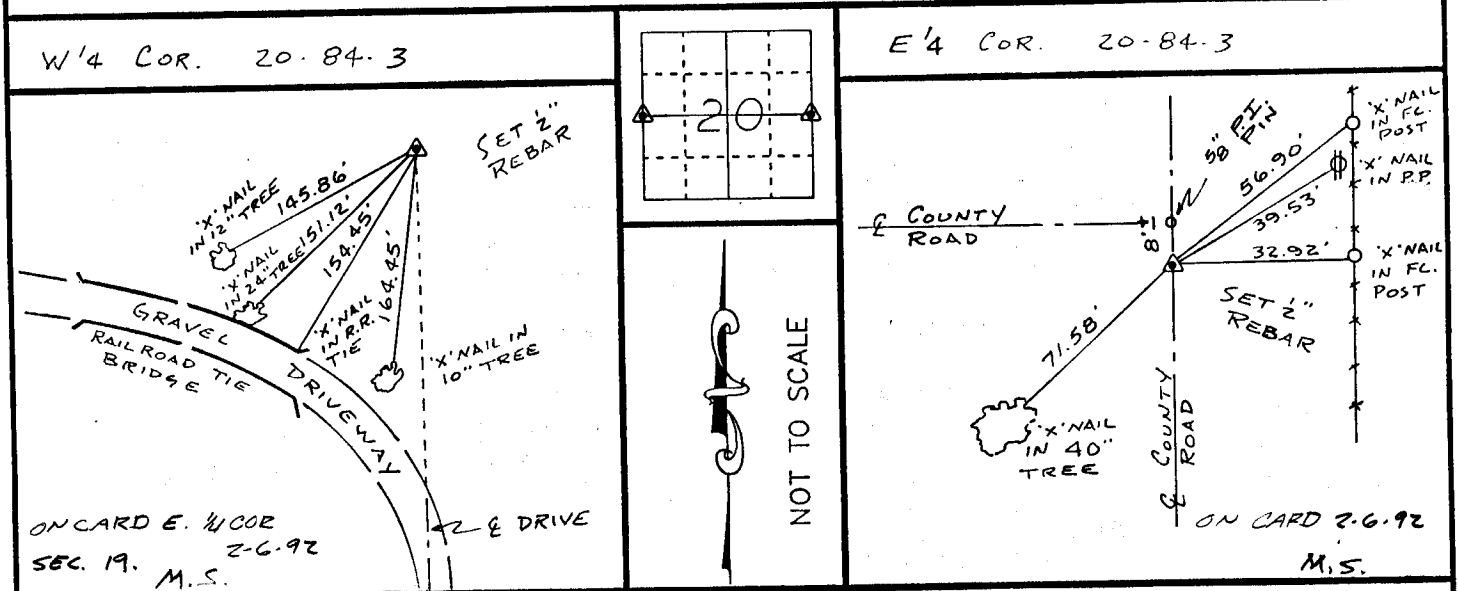
REASON FOR PREPARING CERTIFICATE:

- A) THERE IS NO CERTIFICATE FOR THE CORNER ON FILE WITH THE RECORDER OF THE COUNTY IN WHICH THE CORNER IS LOCATED.
- B) CORNER POSITION DIFFERS FROM THAT SHOWN IN THE PUBLIC RECORDS OF THE COUNTY IN WHICH THE CORNER IS LOCATED.
- C) THE CORNER MONUMENT HAS BEEN REPLACED OR MODIFIED.
- D) THE REFERENCE TIES REFERRED TO IN AN EXISTING PUBLIC RECORD ARE INCORRECT.

MONUMENT DESCRIPTION AND REMARKS :

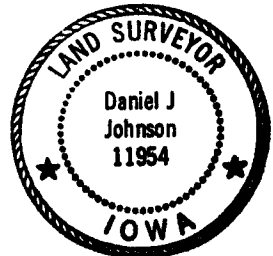
E 1/4 CORNER SECTION 20-T84N-R3W SET 1/2" ϕ REBAR WITH
 L.S. CAP # 11954 3" DEEP ON E NORTH-SOUTH COUNTY RD. 1/8'
 SOUTH OF E OF COUNTY ROAD WEST
 W 1/4 CORNER SECTION 20-T84N-R3W SET 1/2" ϕ REBAR WITH
 L.S. CAP # 11954 6" DEEP IN CORN FIELD AT INTERSECTION OF OLD
 FENCES WEST & SOUTH

RECOVERY TIE DRAWING



I, DANIEL J. JOHNSON, CERTIFY THAT THE CORNER LOCATION(S) SHOWN ON THIS RECORD WERE DETERMINED BY ME OR UNDER MY DIRECTION AND CONTROL AND THAT THIS U.S. PUBLIC LAND SURVEY MONUMENT RECORD IS CORRECT AND COMPLETE TO THE BEST OF MY KNOWLEDGE AND BELIEF.

Daniel J. Johnson 2-4-92
 DANIEL J. JOHNSON L.S. NO 11954 DATE



D Z E M P I T	GOVERNMENT CORNER 5/8" TIE PIN SET CENTERLINE EXISTING FENCE LINE R.O.W. LINE	SHEET TITLE: U.S. PUBLIC LAND SURVEY RECORD PROJECT TITLE: CRAIG GRAF SURVEY	HALL AND HALL ENGINEERS, INC. 226 29TH STREET DRIVE S.E. CEDAR RAPIDS, IOWA 52403 319-362-9548
	DW: R.W.B. KIC: D.J.J. APP:	DATE: 1-28-92 SCALE: NONE	