

05 JAN 21 AM 10:03

MARIE KRUTZFIELD
 RECORDER 7.00 pd

PREPARED BY HALL & HALL ENGINEERS, INC. 209 29TH STREET N.E. CEDAR RAPIDS, IOWA 52402 (319) 362-9548
 SECTION CORNER CERTIFICATE

OF
 LAND SURVEY MONUMENTS SITUATED IN SECTION 18 & 19, TOWNSHIP 84 NORTH,
 RANGE 3 WEST, OF THE FIFTH PRINCIPAL MERIDIAN, JONES, COUNTY, IOWA.

PREVIOUSLY RECORDED IN BOOK _____ AT PAGE _____

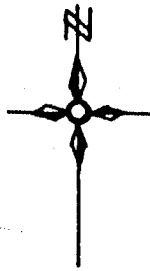
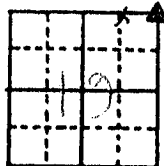
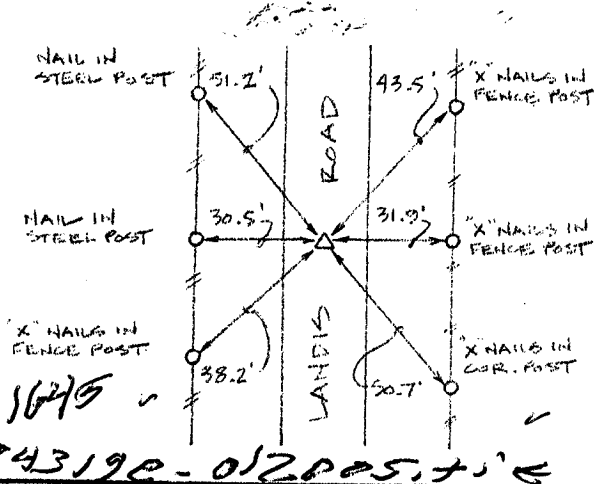
MONUMENT DESCRIPTION AND REMARKS:

* N.E. CORNER, SECTION 19, T84N, R3W, FD. 1/2" REBAR IN CONC.

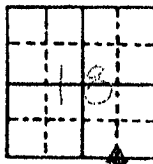
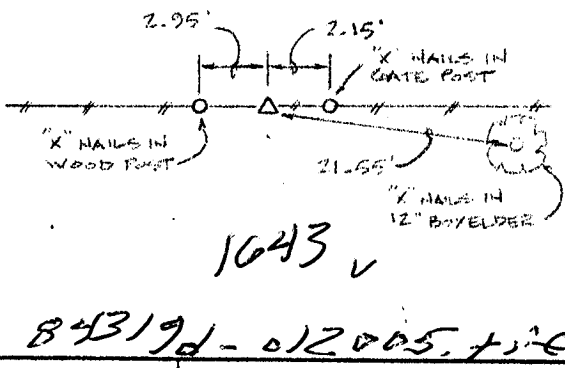
* S.W. CORNER, S.E. 1/4 - S.E. 1/4, SECTION 18, T84N, R3W, FD. STONE

RECOVERY TIE DRAWING

N.E. CORNER, SECTION 19, T84N, R3W



S.W. CORNER, S.E. 1/4 - S.E. 1/4, SECTION 18, T84N, R3W



I hereby certify that this land surveying document was prepared and the related survey work was performed by me or under my direct personal supervision and that I am a duly licensed Land Surveyor under the laws of the State of Iowa.

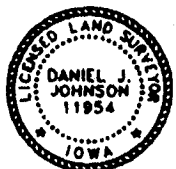
Signed: Daniel J. Johnson Date: 1-20-05

Daniel J. Johnson, L.S. 11854
 My license renewal date is December 31, 2006

Pages or sheets covered by this seal:
 (Entire submission unless specified here)

REASON FOR PREPARING CERTIFICATE

- A) THERE IS NO CERTIFICATE FOR THE CORNER ON FILE WITH THE RECORDER OF THE COUNTY IN WHICH THE CORNER IS LOCATED.
- B) CORNER POSITION DIFFERS FROM THAT SHOWN IN THE PUBLIC RECORDS OF THE COUNTY IN WHICH THE CORNER IS LOCATED.
- C) THE CORNER MONUMENT HAS BEEN REPLACED OR MODIFIED
- D) THE REFERENCE TIES REFERRED TO IN AN EXISTING PUBLIC RECORD ARE INCORRECT



Δ GOVERNMENT CORNER ● PROPERTY CORNER FOUND ○ 1/2" 130° W/ LS CAP SET - - - - - EXISTING FENCE LINE _____ PROPERTY LINE	SET/FILE: US PUBLIC LAND SURVEY RECORD	HALL AND HALL ENGINEERS, INC. 209 29TH STREET N.E. CEDAR RAPIDS, IOWA 52402 (319) 362-9548
	PROJECT/FILE: RICK MEEKS	
DRAWN BY: DLK	CHECKED BY:	NO. 5551

THIS IS NOT A CERTIFICATION

JONES COUNTY ENGINEER'S OFFICE, 19501 HWY. 64, ANAMOSA, IOWA, 52205 (319)462-3785

UNITED STATES PUBLIC LAND SURVEY CORNER CERTIFICATE

LAND SURVEY MONUMENTS SITUATED IN SECTION 18, TOWNSHIP 84
NORTH, RANGE 3 WEST OF THE 5TH P.M., JONES COUNTY, IOWA

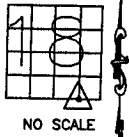
CORNERS TO BE INDEXED

CORNER SECTION TOWNSHIP RANGE
SW-SE-SE 18 84N 3W

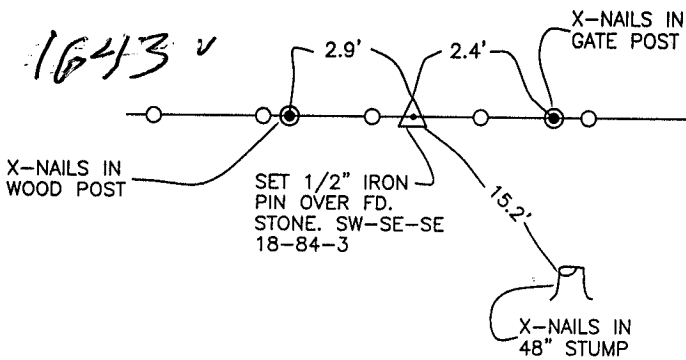
OFFICE FILE NO.

84318x_040604.tif

*84319d_040604.tif
(3-15-76)*



NO SCALE



PREVIOUSLY RECORDED IN BOOK _____, PAGE _____
MONUMENT DESCRIPTION AND HOW ESTABLISHED _____
SURVEY CREW FOUND 3"x5"x8" STONE, LOWERED, SET 1/2" IRON PIN DIRECTLY ABOVE. SET TIES AS INDICATED. SOUTHWEST CORNER OF THE SOUTHEAST QUARTER OF THE SOUTHEAST QUARTER OF SECTION 18, TOWNSHIP 84 NORTH, RANGE 3 WEST OF THE 5TH PRINCIPAL MERIDIAN, JONES COUNTY, IOWA.

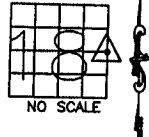
CORNERS TO BE INDEXED

CORNER SECTION TOWNSHIP RANGE
E-QUARTER 18 84N 3W

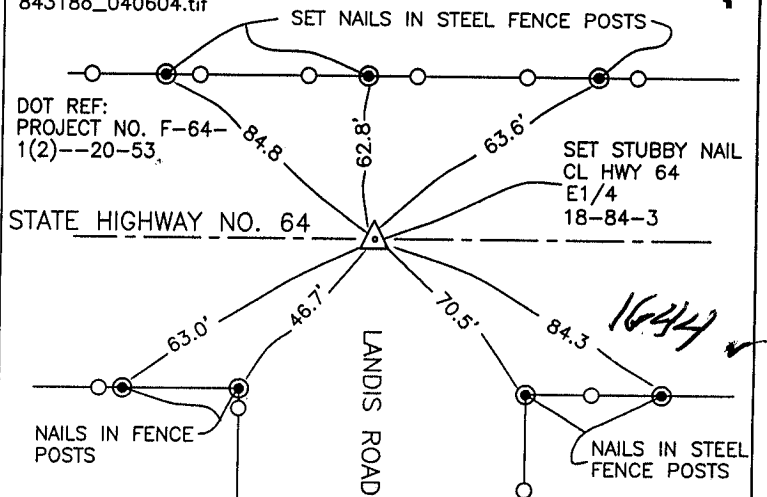
OFFICE FILE NO.

(4-29-74)

84318o_040604.tif



NO SCALE

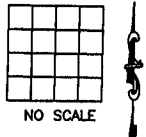


PREVIOUSLY RECORDED IN BOOK _____, PAGE _____
MONUMENT DESCRIPTION AND HOW ESTABLISHED DOT
SET STUBBY NAIL IN THE CENTERLINE OF STATE HIGHWAY NO. 64. SET REFERENCE POINTS AND TIED OUT AS INDICATED. EAST QUARTER CORNER, SECTION 18, TOWNSHIP 84 NORTH, RANGE 3 WEST OF THE 5TH PRINCIPAL MERIDIAN, JONES COUNTY, IOWA.

CORNERS TO BE INDEXED

CORNER SECTION TOWNSHIP RANGE

OFFICE FILE NO.

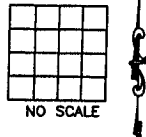


NO SCALE

CORNERS TO BE INDEXED

CORNER SECTION TOWNSHIP RANGE

OFFICE FILE NO.



NO SCALE

PREVIOUSLY RECORDED IN BOOK _____, PAGE _____
MONUMENT DESCRIPTION AND HOW ESTABLISHED _____

PREVIOUSLY RECORDED IN BOOK _____, PAGE _____
MONUMENT DESCRIPTION AND HOW ESTABLISHED _____

~~I hereby declare that this plat, survey or report was made by me or under my direct personal supervision and that I am a duly registered Land Surveyor under the laws of the State of Iowa.~~

SEAL

JONES COUNTY
ENGINEER'S OFFICE

19501 HWY. 64,
ANAMOSA, IOWA,
52205 (319)462-3785

P