

COPY

FEEBOOK: 2009 1162 4/2/2009 3:02 PM
 REC FEES: No Fee
 PAGES: 1

Marie Krutzfield, Recorder
 Jones County, Iowa

PREPARED BY
 CLARENCE J. WALTON, JONES COUNTY ENGINEER'S OFFICE, 19501 HWY. 64, ANAMOSA, IOWA, 52205 (319) 462-3785

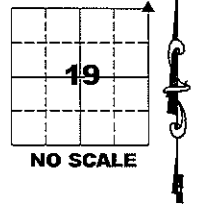
UNITED STATES PUBLIC LAND SURVEY CORNER CERTIFICATE

LAND SURVEY MONUMENTS SITUATED IN SECTION 19, TOWNSHIP 84 NORTH,
 RANGE 3 WEST OF THE 5TH PRINCIPAL MERIDIAN, JONES COUNTY, IOWA.

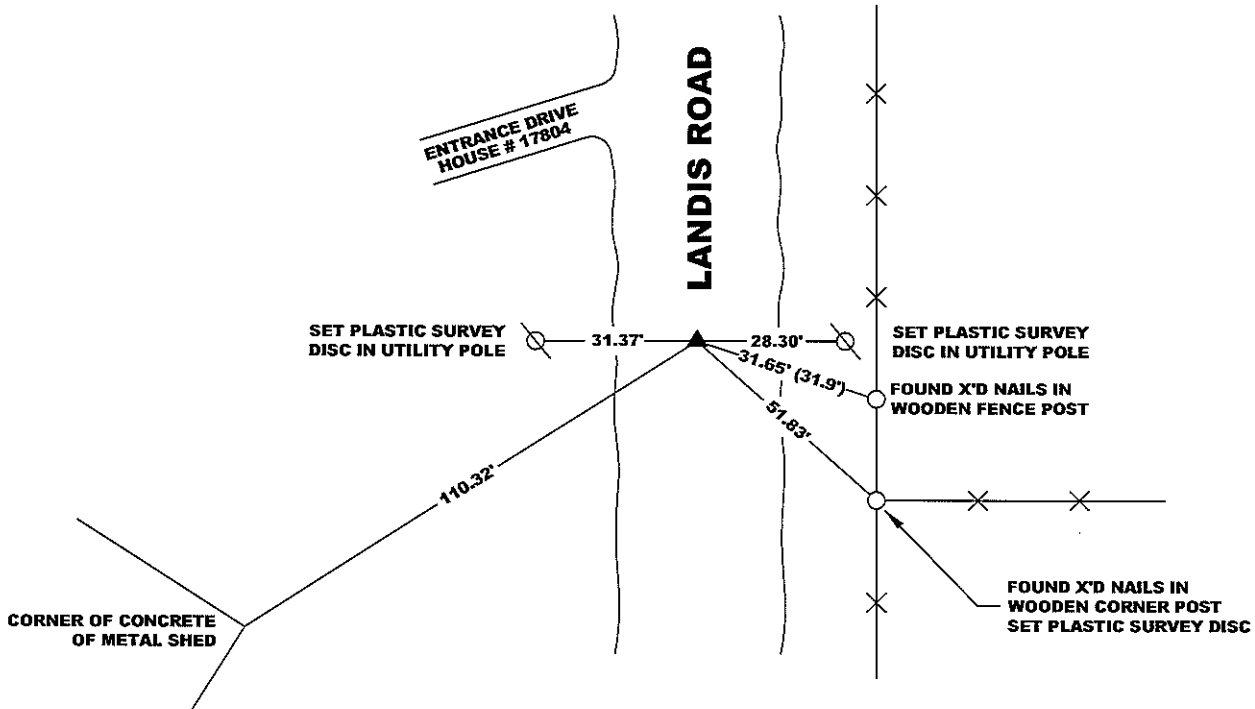
OFFICE FILE NO.

STATE PLANE COORDINATE
 NAD 83 IOWA NORTH
 N 3499609.67
 E 5537676.68

CORNER SECTION TOWNSHIP RANGE
 NE CORNER 19 T84N R3W



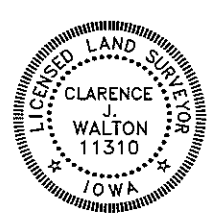
NOTE:
 THE STATE PLANE COORDINATE AS INDICATED IS FOR CONVENIENCE ONLY.
 THE TIES AS SHOWN SHOULD BE USED TO REPLACE THE CORNER, IF
 DESTROYED



- x—x— FENCE LINE
- OPC ORANGE PLASTIC CAP
- () RECORDED AS

PREVIOUSLY RECORDED IN RECORDER'S DOCUMENT 2005 0259
 MONUMENT DESCRIPTION AND HOW ESTABLISHED FOUND CONCRETE MONUMENT W/ 1/2" REBAR IN ROAD. ROAD GRADER HAD APPARENTLY HIT MONUMENT. MONUMENT WAS CONSIDERABLY TIPPED. DUG TO BELOW BASE OF MONUMENT AND RESET IT TO A PLUMB POSITION. TOP OF MONUMENT IS PRESENTLY ± 10" BELOW ROAD SURFACE.

FIELD BOOK 377, PAGE 144. DATE OF SURVEY: 3/26/09



I hereby certify that this land surveying document and the related survey work was performed by me or under my direct personal supervision and that I am a duly registered Land Surveyor under the laws of the State of Iowa.
 Signed: *Clarence J. Walton* 4/2/09
 Clarence J. Walton, L.S.
 My Registration Renewal Date is December 31, 2009
 Iowa License Number 11310
 Pages or sheets covered by this seal: 1 of 1.

- A. THERE IS NO CERTIFICATE FOR THE CORNER ON FILE WITH THE RECORDER OF THE COUNTY IN WHICH THE CORNER IS LOCATED.
- B. THE CORNER MONUMENT HAS BEEN REPLACED OR MODIFIED.
- C. THE SURVEYOR IN RESPONSIBLE CHARGE OF THE LAND SURVEYING ACCEPTS A CORNER POSITION THAT DIFFERS FROM THAT SHOWN IN THE PUBLIC RECORDS OF THE COUNTY IN WHICH THE CORNER IS LOCATED.
- D. THE REFERENCE TIES REFERRED TO IN AN EXISTING PUBLIC RECORD NO LONGER EXIST.

CORNERS TO BE INDEXED

CORNER	SECTION	TOWNSHIP	RANGE
NE	19	84N	3W
SE	18	84N	3W
SW	17	84N	3W
NW	20	84N	3W

JONES COUNTY ENGINEER'S OFFICE



19501 HWY. 64, ANAMOSA, IOWA 52205
 (319) 462-3785

2005 0259
 FILED
 RECORDERS OFFICE
 JONES COUNTY IOWA

05 JAN 21 AM 10:03

MARIE KRUTZFIELD
 RECORDER 7.00 pd

PREPARED BY HALL & HALL ENGINEERS, INC. 209 29TH STREET N.E. CEDAR RAPIDS, IOWA 52402 (319) 362-9548
 SECTION CORNER CERTIFICATE

OF
 LAND SURVEY MONUMENTS SITUATED IN SECTION 18 & 19, TOWNSHIP 84 NORTH,
 RANGE 3 WEST, OF THE FIFTH PRINCIPAL MERIDIAN, JONES, COUNTY, IOWA.

PREVIOUSLY RECORDED IN BOOK _____ AT PAGE _____

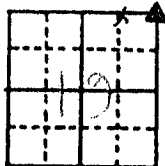
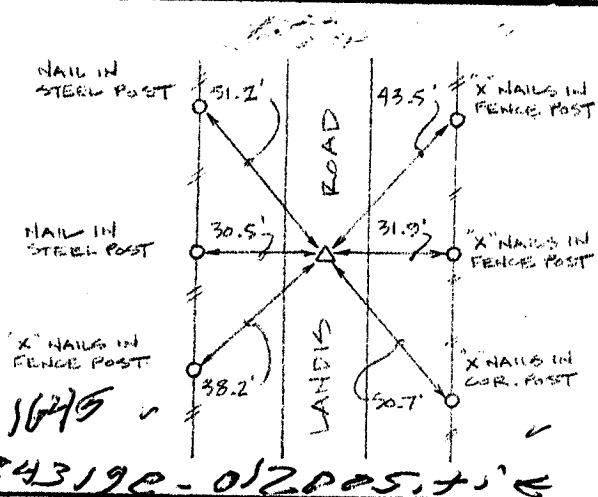
MONUMENT DESCRIPTION AND REMARKS:

* N.E. CORNER, SECTION 19, T84N, R3W, FD. 1/2" REBAR IN CONC.

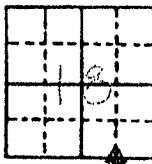
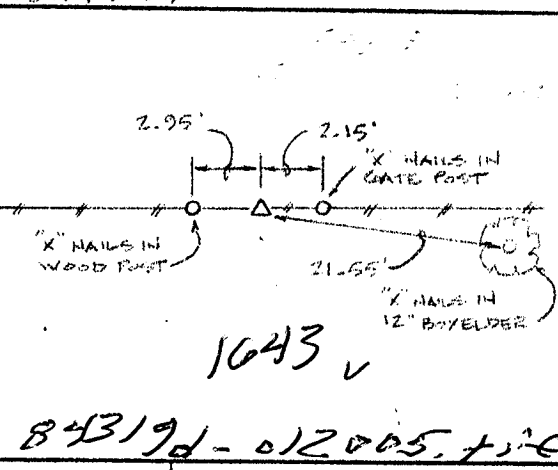
* S.W. CORNER, S.E. 1/4 - S.E. 1/4, SECTION 18, T84N, R3W, FD. STONE

RECOVERY TIE DRAWING

N.E. CORNER, SECTION 19, T84N, R3W



S.W. CORNER, S.E. 1/4 - S.E. 1/4, SECTION 18, T84N, R3W



I hereby certify that this land surveying document was prepared and the related survey work was performed by me or under my direct personal supervision and that I am a duly licensed Land Surveyor under the laws of the State of Iowa.

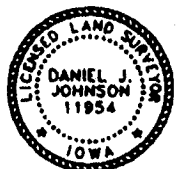
Signed: Daniel J. Johnson Date: 1-20-05

Daniel J. Johnson, L.S. 11854
 My license renewal date is December 31, 2006

Pages or sheets covered by this seal:
 (Entire submission unless specified here)

REASON FOR PREPARING CERTIFICATE

- A) THERE IS NO CERTIFICATE FOR THE CORNER ON FILE WITH THE RECORDER OF THE COUNTY IN WHICH THE CORNER IS LOCATED.
- B) CORNER POSITION DIFFERS FROM THAT SHOWN IN THE PUBLIC RECORDS OF THE COUNTY IN WHICH THE CORNER IS LOCATED.
- C) THE CORNER MONUMENT HAS BEEN REPLACED OR MODIFIED
- D) THE REFERENCE TIES REFERRED TO IN AN EXISTING PUBLIC RECORD ARE INCORRECT



Δ GOVERNMENT CORNER ● PROPERTY CORNER FOUND ○ 1/2" 130° W/ LS CAP SET - - - - - EXISTING FENCE LINE _____ PROPERTY LINE	SET/FILE: US PUBLIC LAND SURVEY RECORD	HALL AND HALL ENGINEERS, INC. 209 29TH STREET N.E. CEDAR RAPIDS, IOWA 52402 (319) 362-9548
	PROJECT FILE: RICK MEEKS	
DRAWN BY: DLK	CHECKED BY:	NO. 5551

THIS IS NOT A CERTIFICATION

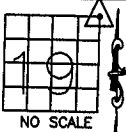
JONES COUNTY ENGINEER'S OFFICE, 19501 HWY. 64, ANAMOSA, IOWA, 52205 (319)462-3785

UNITED STATES PUBLIC LAND SURVEY CORNER CERTIFICATE

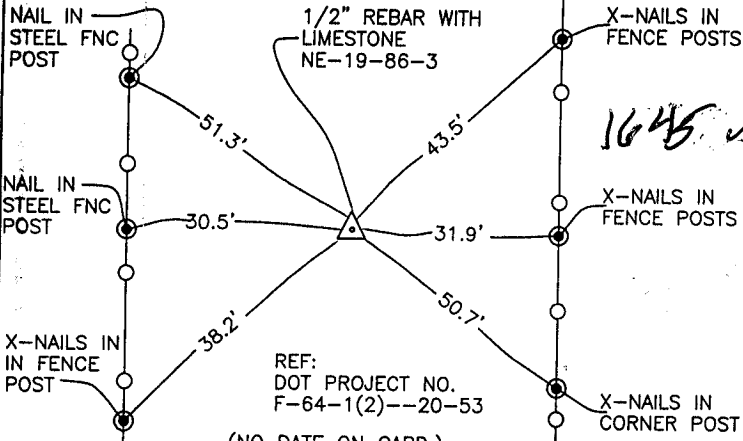
LAND SURVEY MONUMENTS SITUATED IN SECTION 19, TOWNSHIP 84
NORTH, RANGE 3 WEST OF THE 5TH P.M., JONES COUNTY, IOWA

CORNERS TO BE INDEXED

CORNER SECTION TOWNSHIP RANGE
NORTHEAST 19 84N 3W



OFFICE FILE NO.
84319e_040604.tif



REF:
DOT PROJECT NO.
F-64-1(2)--20-53

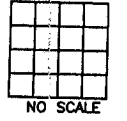
(NO DATE ON CARD.)

84319e_040604.tif

PREVIOUSLY RECORDED IN BOOK _____, PAGE _____
MONUMENT DESCRIPTION AND HOW ESTABLISHED FOUND
LIMESTONE WITH CUT X 1' BELOW SURFACE. SET 1/2" REBAR WITH
STONE AND TIED AS INDICATED. NORTHEAST CORNER OF SECTION 19,
TOWNSHIP 86 NORTH, RANGE 3 WEST OF THE 5TH PRINCIPAL MERIDIAN,
JONES COUNTY, IOWA.

CORNERS TO BE INDEXED

CORNER SECTION TOWNSHIP RANGE

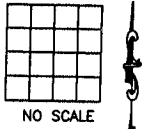


OFFICE FILE NO.

PREVIOUSLY RECORDED IN BOOK _____, PAGE _____
MONUMENT DESCRIPTION AND HOW ESTABLISHED _____

CORNERS TO BE INDEXED

CORNER SECTION TOWNSHIP RANGE

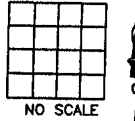


OFFICE FILE NO.

PREVIOUSLY RECORDED IN BOOK _____, PAGE _____
MONUMENT DESCRIPTION AND HOW ESTABLISHED _____

CORNERS TO BE INDEXED

CORNER SECTION TOWNSHIP RANGE



OFFICE FILE NO.

PREVIOUSLY RECORDED IN BOOK _____, PAGE _____
MONUMENT DESCRIPTION AND HOW ESTABLISHED _____

~~I hereby declare that this plat, survey or report was made by me or under my direct personal supervision and that I am a duly registered Land Surveyor under the laws of the State of Iowa.~~

Signed: _____

SEAL

JONES COUNTY
ENGINEER'S OFFICE

19501 HWY. 64,
ANAMOSA, IOWA,
52205 (319)462-3785