

2004 1655

FILED  
RECORDERS OFFICE  
JONES COUNTY IOWA

04 MAY 13 AM 9:28

MARIE KRUTZFIELD  
RECORDER *No Fee*

J.D. TJEPKES, LS. JONES COUNTY ENGINEER'S OFFICE, 19501 HWY. 64, ANAMOSA, IOWA, 52205 (319)462-3785

# UNITED STATES PUBLIC LAND SURVEY CORNER CERTIFICATE

LAND SURVEY MONUMENTS SITUATED IN SECTION 1, TOWNSHIP 84  
NORTH, RANGE 3 WEST OF THE 5TH P.M., JONES COUNTY, IOWA

**CORNERS TO BE INDEXED**

CORNER	SECTION	TOWNSHIP	RANGE
E1/4	1	84N	3W

OFFICE FILE NO. 84301o\_050704.tif

FIELD NOTES:  
5-3-2004  
BK #358  
P 74

PREVIOUSLY RECORDED IN BOOK NA, PAGE NA  
MONUMENT DESCRIPTION AND HOW ESTABLISHED \_\_\_\_\_  
PER PHYSICAL EVIDENCE AT FENCE CORNER, & CHECKING  
DISTANCE & LINE NORTH TO TOWNSHIP LINE, SET 5/8\"X24\"  
REBAR W/CAP #14807 3\" ABOVE GROUND. TIES AS INDICATED  
FOR E1/4 COR SEC. 30 T84N R3W.

**CORNERS TO BE INDEXED**

CORNER	SECTION	TOWNSHIP	RANGE
N1/4	1	84N	3W

OFFICE FILE NO. 84301c\_050704.tif

FIELD NOTES:  
5-3-2004  
BK #358  
P 76

PREVIOUSLY RECORDED IN BOOK NA, PAGE NA  
MONUMENT DESCRIPTION AND HOW ESTABLISHED \_\_\_\_\_  
PER TIES ON RECORD IN JONES CO. ENGINEER'S OFFICE FILED BY  
LS OSBORN, DATED MAY 28, 1974, FOUND 5/8\" IRON PIN BURIED  
15\" IN ROAD BED. RETIED AS INDICATED FOR N1/4 COR. SEC. 1  
T84N R3W.

**CORNERS TO BE INDEXED**

CORNER	SECTION	TOWNSHIP	RANGE
NE	1	84N	3W

OFFICE FILE NO. 84301e\_050704.tif

FIELD NOTES:  
5-3-2004  
BK #358  
P 77

PREVIOUSLY RECORDED IN BOOK NA, PAGE NA  
MONUMENT DESCRIPTION AND HOW ESTABLISHED \_\_\_\_\_  
PER TIES OF RECORD IN JONES CO. ENGINEER'S OFFICE FILED BY  
LS OSBORN, DATED MAY 28, 1974, FOUND 3/4\" HEX BAR IN  
ROAD BED. RETIED AS INDICATED FOR NE COR. SEC. 1 T84N R3W.

**CORNERS TO BE INDEXED**

CORNER	SECTION	TOWNSHIP	RANGE

OFFICE FILE NO. \_\_\_\_\_

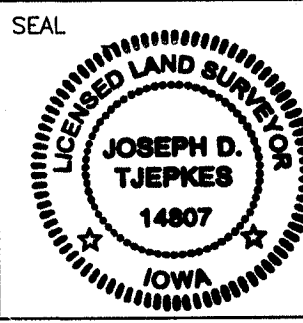
FIELD NOTES: \_\_\_\_\_

PREVIOUSLY RECORDED IN BOOK \_\_\_\_\_, PAGE \_\_\_\_\_  
MONUMENT DESCRIPTION AND HOW ESTABLISHED \_\_\_\_\_

I hereby declare that this plat, survey or report was made by me or under my direct personal supervision and that I am a duly registered Land Surveyor under the laws of the State of Iowa.

Signed: *[Signature]* 5-13-04

Joseph D. Tjepkes L.S. Iowa Reg. No. 14807  
My Registration Renewal Date is December 31, 2004



J.D. TJEPKES LS 14807  
JONES COUNTY  
ENGINEER'S OFFICE

19501 HWY. 64,  
ANAMOSA, IOWA,  
52205 (319)462-3785

2004 1651

FILED  
RECORDERS OFFICE  
JONES COUNTY IOWA

04 MAY 13 AM 9:23

MARIE KRUTZFIELD  
RECORDER NO FEE

J.D. TJEPKES, LS. JONES COUNTY ENGINEER'S OFFICE, 19501 HWY. 64, ANAMOSA, IOWA, 52205 (319)462-3785

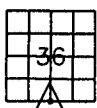
# UNITED STATES PUBLIC LAND SURVEY CORNER CERTIFICATE

LAND SURVEY MONUMENTS SITUATED IN SECTION 36, TOWNSHIP 85  
NORTH, RANGE 3 WEST OF THE 5TH P.M., JONES COUNTY, IOWA

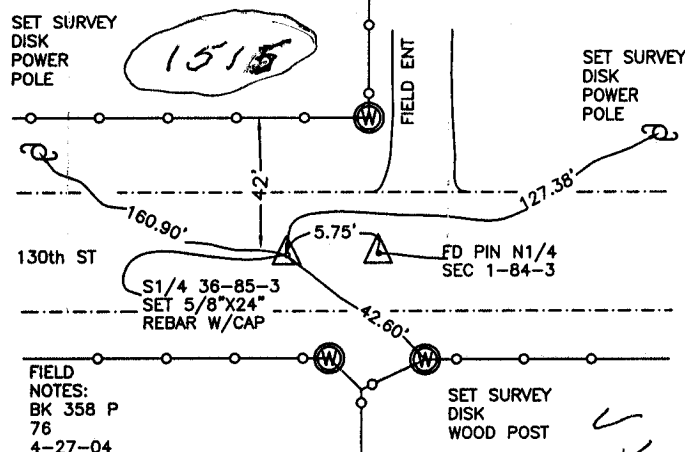
### CORNERS TO BE INDEXED

CORNER SECTION TOWNSHIP RANGE  
S1/4 36 85N 3W

OFFICE FILE NO.  
85336w\_043004.tif



NO SCALE

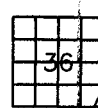


PREVIOUSLY RECORDED IN BOOK NA, PAGE NA  
MONUMENT DESCRIPTION AND HOW ESTABLISHED  
PER PROPORTIONATE DISTANCE AND ON LINE BETWEEN FOUND  
N1/4 SEC 1-84-3, AND FOUND NE COR. SEC 2-84-3, SET  
5/8"X24" REBAR W/CAP #14807 IN ROADBED. BURIED 4". TIES  
AS INDICATED FOR S1/4 SECTION 36 T85N R3W.

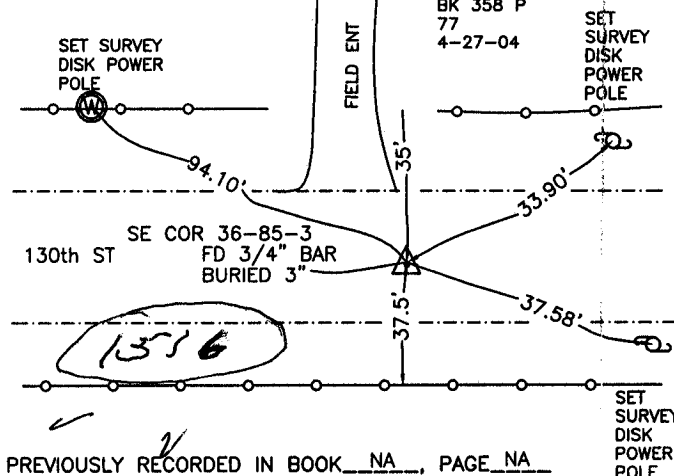
### CORNERS TO BE INDEXED

CORNER SECTION TOWNSHIP RANGE  
SE 36 85N 3W

OFFICE FILE NO.  
85336y\_043004.tif



NO SCALE

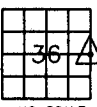


PREVIOUSLY RECORDED IN BOOK NA, PAGE NA  
MONUMENT DESCRIPTION AND HOW ESTABLISHED  
PER TIES ON RECORD IN JONES CO. ENGINEER'S OFFICE, FILED  
BY LS OSBORN DATED 5-28-1974, FOUND 3/4" HEX BAR IN  
ROADBED. TIES FOR SE COR. SEC 36 T85N R3W AS INDICATED.

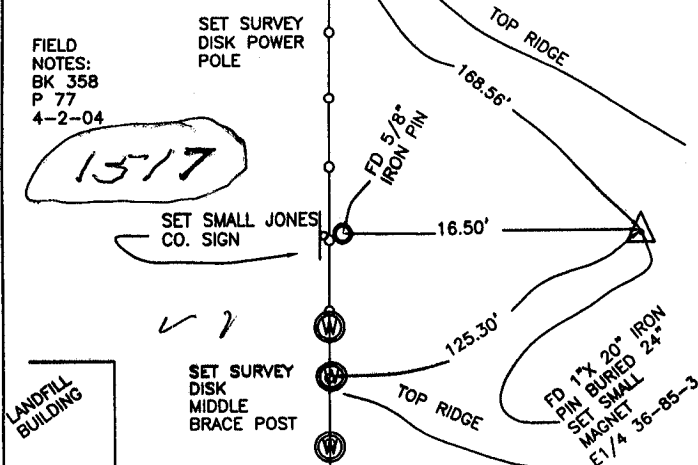
### CORNERS TO BE INDEXED

CORNER SECTION TOWNSHIP RANGE  
E1/4 36 85N 3W

OFFICE FILE NO.  
85336o\_043004.tif



NO SCALE

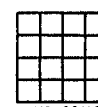


PREVIOUSLY RECORDED IN BOOK NA, PAGE NA  
MONUMENT DESCRIPTION AND HOW ESTABLISHED  
PER TIES DATED 12-17-1984 ON RECORD IN JONES CO.  
ENGINEER'S OFFICE, FOUND 1"X20" IRON PIN BURIED 24" IN  
CULTIVATED FIELD. SET SMALL MAGNET ALONG SIDE OF PIN.  
RETIED AS INDICATED. E1/4 SEC. 36 T85N R3W.

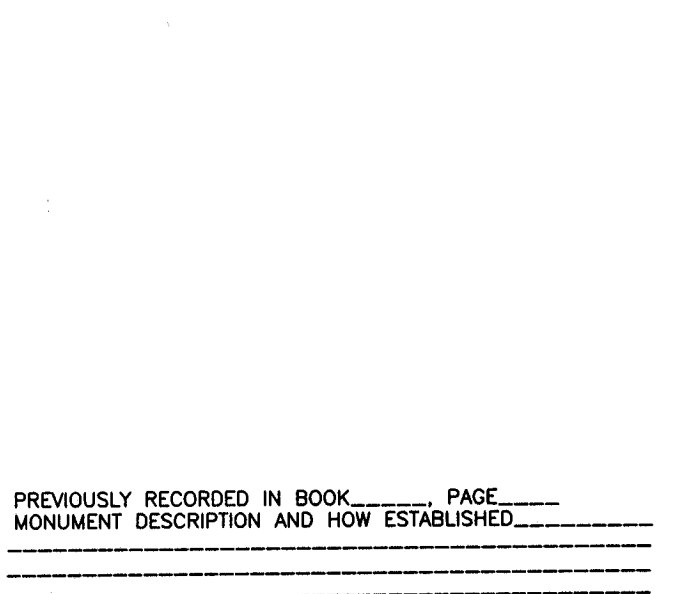
### CORNERS TO BE INDEXED

CORNER SECTION TOWNSHIP RANGE

OFFICE FILE NO.



NO SCALE



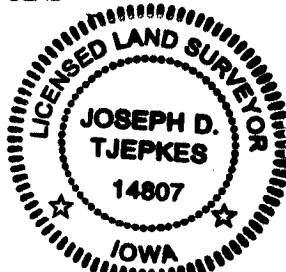
PREVIOUSLY RECORDED IN BOOK NA, PAGE NA  
MONUMENT DESCRIPTION AND HOW ESTABLISHED

I hereby declare that this plat, survey or report was made by me or under my direct personal supervision and that I am a duly registered Land Surveyor under the laws of the State of Iowa.

Signed:

*Joseph D. Tjepkes* 5-13-04  
Joseph D. Tjepkes L.S. Iowa Reg. No. 14807  
My Registration Renewal Date is December 31, 2004

SEAL



J.D. TJEPKES LS 14807  
JONES COUNTY  
ENGINEER'S OFFICE

19501 HWY. 64,  
ANAMOSA, IOWA,  
52205 (319)462-3785