

U.S. PUBLIC LAND SURVEY CORNER CERTIFICATE

OF
 LAND SURVEY MONUMENTS SITUATED IN SECTION 21, TOWNSHIP 84 NORTH,
 RANGE 3 WEST, OF THE FIFTH PRINCIPAL MERIDIAN, JONES, COUNTY, IOWA.

PREVIOUSLY RECORDED IN BOOK _____ AT PAGE _____ .

FOR RECORDER'S USE

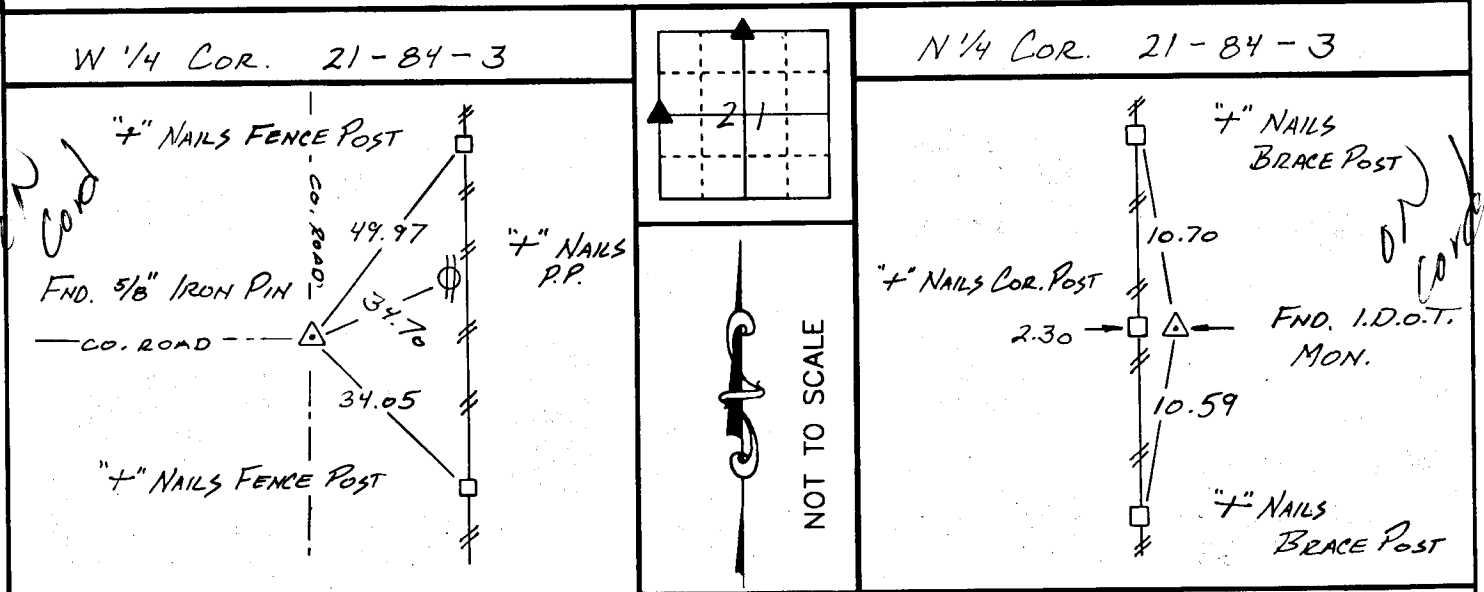
REASON FOR PREPARING CERTIFICATE:

- A) THERE IS NO CERTIFICATE FOR THE CORNER ON FILE WITH THE RECORDER OF THE COUNTY IN WHICH THE CORNER IS LOCATED.
- B) CORNER POSITION DIFFERS FROM THAT SHOWN IN THE PUBLIC RECORDS OF THE COUNTY IN WHICH THE CORNER IS LOCATED.
- C) THE CORNER MONUMENT HAS BEEN REPLACED OR MODIFIED.
- D) THE REFERENCE TIES REFERRED TO IN AN EXISTING PUBLIC RECORD ARE INCORRECT.

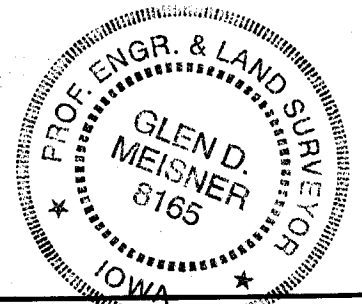
MONUMENT DESCRIPTION AND REMARKS:

FOUND 5/8" ϕ IRON PIN AT THE W 1/4 COR. OF SEC. 21 - T 84 N - R 3 W OF THE 5TH P.M.
 FOUND I.D.O.T. MONUMENT AT THE N 1/4 COR. OF SEC. 21 - T 84 N - R 3 W OF THE 5TH P.M.

REFERENCE TIE DRAWING



I HEREBY CERTIFY THAT THE CORNER LOCATION(S) SHOWN ON THIS RECORD WERE DETERMINED BY ME OR UNDER MY DIRECT PERSONAL SUPERVISION AND THAT THIS U.S. PUBLIC LAND SURVEY MONUMENT RECORD IS CORRECT AND COMPLETE TO THE BEST OF MY KNOWLEDGE AND BELIEF.



Glen D. Meisner 5-24-96
 Glen D. Meisner, P.E. & L.S. Ia. Reg. No. 8165
 My Biennial Registration Expires December 31, 19 97.

DZMGR1	GOVERNMENT CORNER 5/8" TIE PIN SET CENTERLINE EXISTING FENCE LINE R.O.W. LINE	SHEET TITLE: U.S. PUBLIC LAND SURVEY CORNER CERTIFICATE PROJECT TITLE: <u>GLENN</u>	MMS CONSULTANTS, INC. Iowa City, Iowa 319-351-8282
	D W <u>RR.N.</u> C R <u>G.D.M.</u> A P <u>G.D.M.</u>	DATE <u>1-30-96</u> SCALE NONE	

SECTION CORNER CERTIFICATE

OF
 LAND SURVEY MONUMENTS SITUATED IN SECTION 20, TOWNSHIP 84 NORTH,
 RANGE 3 WEST, OF THE FIFTH PRINCIPAL MERIDIAN, JONES, COUNTY, IOWA.

PREVIOUSLY RECORDED IN BOOK _____ AT PAGE _____

FOR RECORDER'S USE

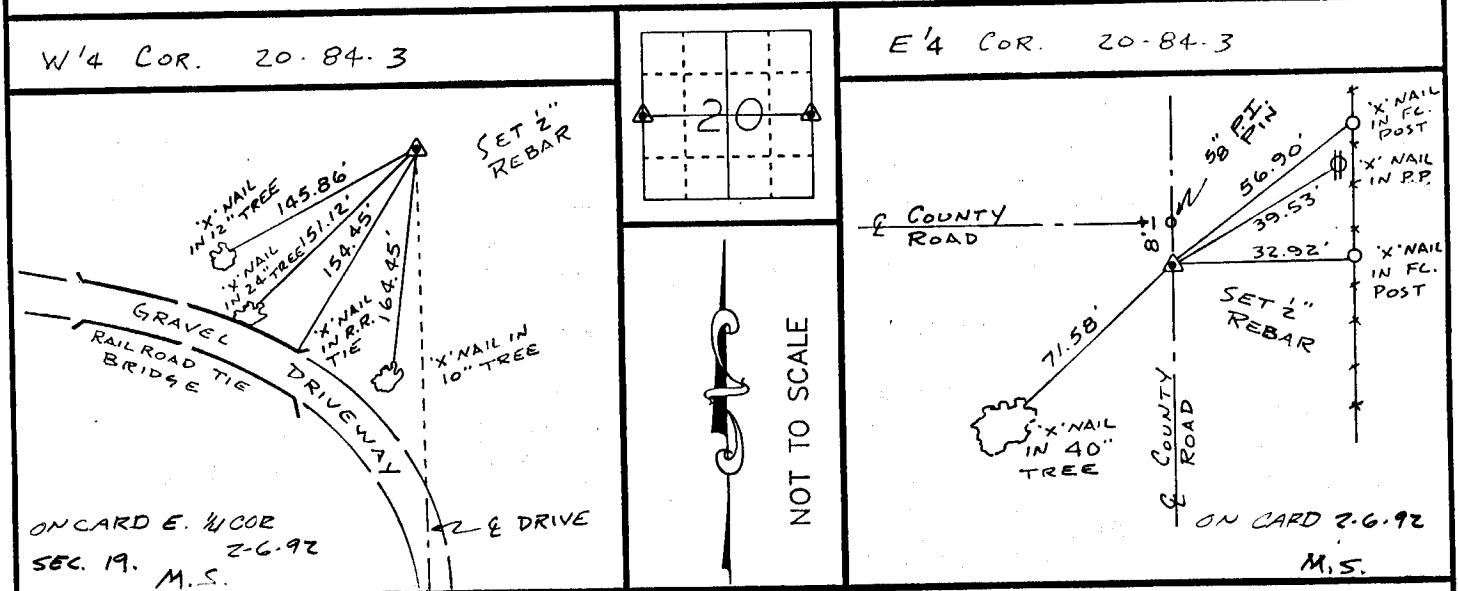
REASON FOR PREPARING CERTIFICATE:

- A) THERE IS NO CERTIFICATE FOR THE CORNER ON FILE WITH THE RECORDER OF THE COUNTY IN WHICH THE CORNER IS LOCATED.
- B) CORNER POSITION DIFFERS FROM THAT SHOWN IN THE PUBLIC RECORDS OF THE COUNTY IN WHICH THE CORNER IS LOCATED.
- C) THE CORNER MONUMENT HAS BEEN REPLACED OR MODIFIED.
- D) THE REFERENCE TIES REFERRED TO IN AN EXISTING PUBLIC RECORD ARE INCORRECT.

MONUMENT DESCRIPTION AND REMARKS:

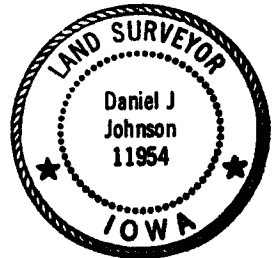
E 1/4 CORNER SECTION 20-T84N-R3W SET 1/2" ϕ REBAR WITH
 L.S. CAP # 11954 3" DEEP ON E NORTH-SOUTH COUNTY RD. 1/8'
 SOUTH OF E OF COUNTY ROAD WEST
 W 1/4 CORNER SECTION 20-T84N-R3W SET 1/2" ϕ REBAR WITH
 L.S. CAP # 11954 6" DEEP IN CORN FIELD AT INTERSECTION OF OLD
 FENCES WEST & SOUTH

RECOVERY TIE DRAWING



I, DANIEL J. JOHNSON, CERTIFY THAT THE CORNER LOCATION(S) SHOWN ON THIS RECORD WERE DETERMINED BY ME OR UNDER MY DIRECTION AND CONTROL AND THAT THIS U.S. PUBLIC LAND SURVEY MONUMENT RECORD IS CORRECT AND COMPLETE TO THE BEST OF MY KNOWLEDGE AND BELIEF.

Daniel J. Johnson 2-4-92
 DANIEL J. JOHNSON L.S. NO 11954 DATE



DZ MORIT	△ GOVERNMENT CORNER ○ 5/8" TIE PIN SET — CENTERLINE - - - EXISTING FENCE LINE - - - R.O.W. LINE	SHEET TITLE: U.S. PUBLIC LAND SURVEY RECORD PROJECT TITLE: CRAIG GRAF SURVEY	H H H	HALL AND HALL ENGINEERS, INC. 226 29TH STREET DRIVE S.E. CEDAR RAPIDS, IOWA 52403 319-362-9548	
	DW R.W.B. KIC D.J.J. APP	DATE 1-28-92 SCALE NONE		FNO B 07 23 PNO J 4610	