

FILED
RECORDERS OFFICE
JONES COUNTY IOWA

05 APR -6 PM 4:13

MARIE KRUTZFIELD
RECORDER 7.00 *PK*

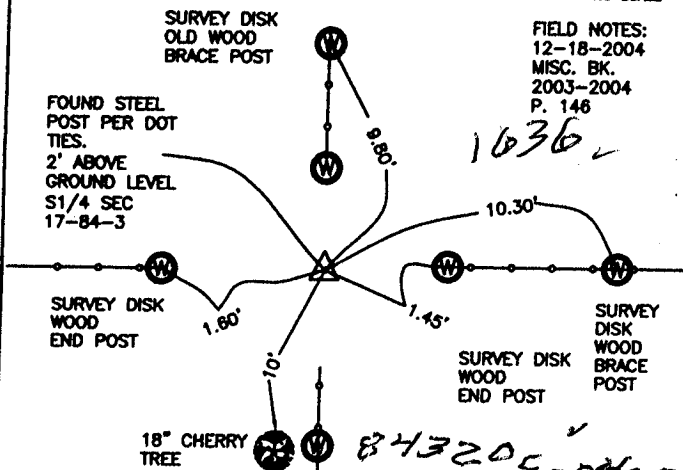
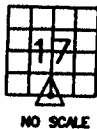
J.D. TJEPKES, LS. 14807, 23428 RIDGE ROAD, ANAMOSA, IOWA, 52205 (319-462-6067)

UNITED STATES PUBLIC LAND SURVEY CORNER CERTIFICATE

LAND SURVEY MONUMENTS SITUATED IN SECTION 17, TOWNSHIP 84
NORTH, RANGE 3 WEST OF THE 5TH P.M., JONES COUNTY, IOWA

CORNERS TO BE INDEXED

CORNER SECTION TOWNSHIP RANGE
S1/4 17 84N 3W
OFFICE FILE NO.



FIELD NOTES:
12-18-2004
MISC. BK.
2003-2004
P. 148

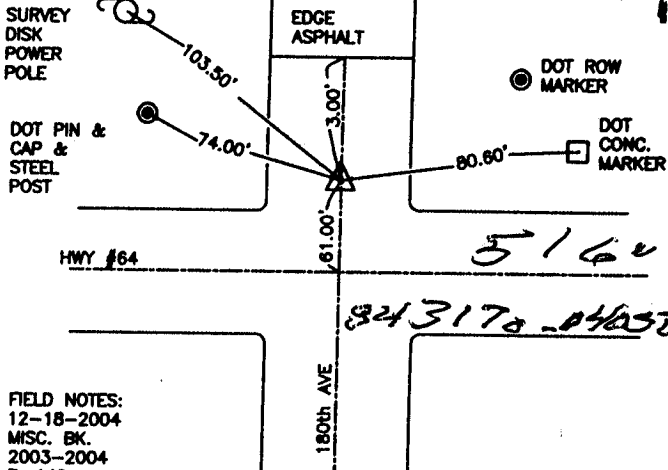
1636

84320C-040505

PREVIOUSLY RECORDED IN BOOK NA, PAGE NA
MONUMENT DESCRIPTION AND HOW ESTABLISHED
PER DOT TIES ON RECORD IN JONES COUNTY ENGINEER'S
OFFICE, FOUND 2' STEEL POST BETWEEN WOOD FENCE
CORNERS. RETIED AS INDICATED. S1/4 SECTION 17 T84N R3W.

CORNERS TO BE INDEXED

CORNER SECTION TOWNSHIP RANGE
E1/4 17 84N 3W
OFFICE FILE NO.



FIELD NOTES:
12-18-2004
MISC. BK.
2003-2004
P. 149

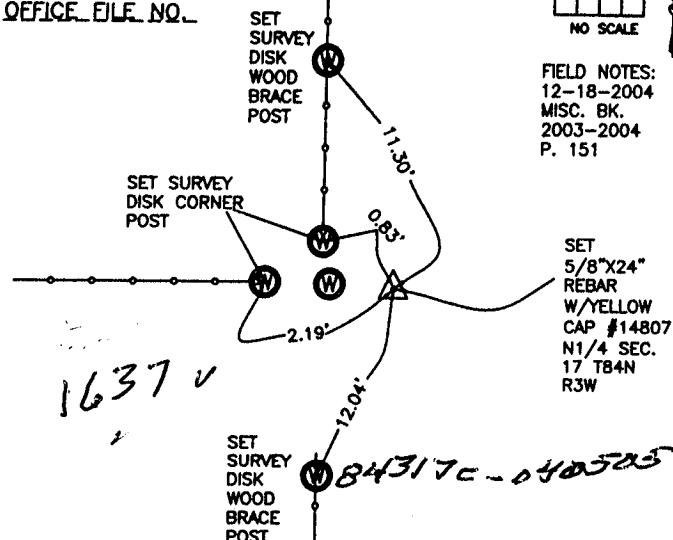
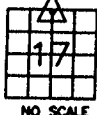
516

84317a-040505

PREVIOUSLY RECORDED IN BOOK NA, PAGE NA
MONUMENT DESCRIPTION AND HOW ESTABLISHED
PER FOUND TIES OF RECORD IN JONES CO. RECORDER'S
OFFICE, SET PK NAIL IN ASPHALT. METAL DETECTED UNDER
CROSSING OF TIES. NEW TIES AS INDICATED. E1/4 SECTION 17
T84N R3W.

CORNERS TO BE INDEXED

CORNER SECTION TOWNSHIP RANGE
N1/4 17 84N 3W
OFFICE FILE NO.



FIELD NOTES:
12-18-2004
MISC. BK.
2003-2004
P. 151

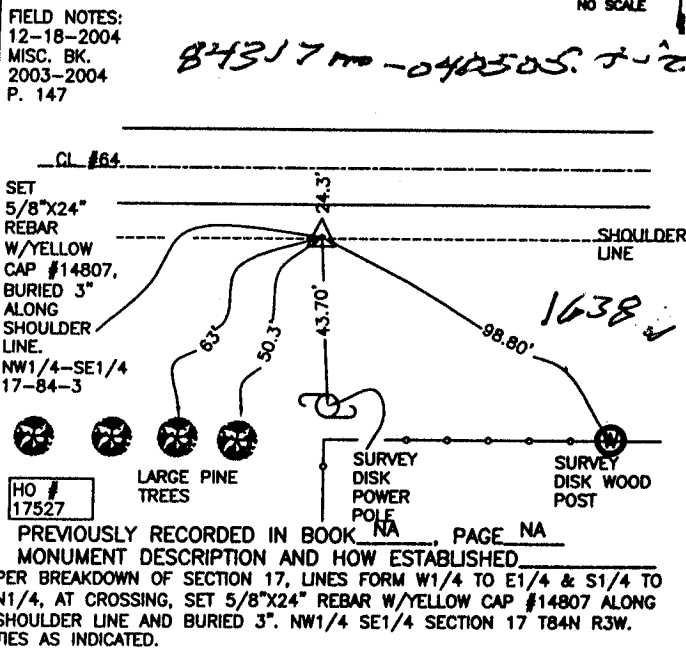
1637

84317c-040505

PREVIOUSLY RECORDED IN BOOK NA, PAGE NA
MONUMENT DESCRIPTION AND HOW ESTABLISHED
PER PHYSICAL EVIDENCE AT FENCE CORNERS, WITH FENCE LINES
NORTH-SOUTH-WEST, & ON SPLIT BETWEEN FOUND NW CORNER AND
FOUND NE CORNER SECTION 17, SET 5/8"x24" REBAR W/YELLOW CAP
#14807, 3" ABOVE PRESENT GROUND. TIES AS INDICATED FOR N1/4 SEC.17
T84N R3W.

CORNERS TO BE INDEXED

CORNER SECTION TOWNSHIP RANGE
NW1/4-SE1/4 17 84N 3W
OFFICE FILE NO.



FIELD NOTES:
12-18-2004
MISC. BK.
2003-2004
P. 147

84317m-040505

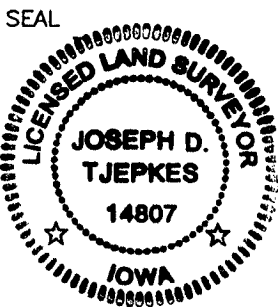
1638

PREVIOUSLY RECORDED IN BOOK NA, PAGE NA
MONUMENT DESCRIPTION AND HOW ESTABLISHED
PER BREAKDOWN OF SECTION 17, LINES FORM W1/4 TO E1/4 & S1/4 TO
N1/4, AT CROSSING, SET 5/8"x24" REBAR W/YELLOW CAP #14807 ALONG
SHOULDER LINE AND BURIED 3". NW1/4 SE1/4 SECTION 17 T84N R3W.
TIES AS INDICATED.

I hereby declare that this plat, survey or report was made by me or under my direct personal supervision and that I am a duly registered Land Surveyor under the laws of the State of Iowa.

Signed: *[Signature]* 4-05-05

Joseph D. Tjepkes L.S. Iowa Reg. No. 14807
My Registration Renewal Date is December 31, 2006



J.D. TJEPKES LS 14807
23428 RIDGE ROAD
ANAMOSA, IOWA, 52205
(319-462-3785)

THIS IS NOT A CERTIFICATION

JONES COUNTY ENGINEER'S OFFICE, 19501 HWY. 64, ANAMOSA, IOWA, 52205 (319)462-3785

UNITED STATES PUBLIC LAND SURVEY CORNER CERTIFICATE

LAND SURVEY MONUMENTS SITUATED IN SECTION 20, TOWNSHIP 84 NORTH, RANGE 3 WEST OF THE 5TH P.M., JONES COUNTY, IOWA

CORNERS TO BE INDEXED

CORNER N-QUARTER	SECTION 20	TOWNSHIP 84N	RANGE 3W
------------------	------------	--------------	----------

OFFICE FILE NO. 84320c_040704.tif

DOT REF:
F-64-1(2)--20-53
3-15-76

PREVIOUSLY RECORDED IN BOOK _____, PAGE _____
MONUMENT DESCRIPTION AND HOW ESTABLISHED FOUND
STEEL POST 2' ABOVE SURFACE. SET TIES AS INDICATED.
NORTH QUARTER CORNER SECTION 20, TOWNSHIP 84 NORTH, RANGE 3 WEST OF THE 5TH PRINCIPAL MERIDIAN, JONES COUNTY, IOWA.

CORNERS TO BE INDEXED

CORNER	SECTION	TOWNSHIP	RANGE
--------	---------	----------	-------

OFFICE FILE NO. _____

PREVIOUSLY RECORDED IN BOOK _____, PAGE _____
MONUMENT DESCRIPTION AND HOW ESTABLISHED _____

CORNERS TO BE INDEXED

CORNER	SECTION	TOWNSHIP	RANGE
--------	---------	----------	-------

OFFICE FILE NO. _____

PREVIOUSLY RECORDED IN BOOK _____, PAGE _____
MONUMENT DESCRIPTION AND HOW ESTABLISHED _____

CORNERS TO BE INDEXED

CORNER	SECTION	TOWNSHIP	RANGE
--------	---------	----------	-------

OFFICE FILE NO. _____

PREVIOUSLY RECORDED IN BOOK _____, PAGE _____
MONUMENT DESCRIPTION AND HOW ESTABLISHED _____

~~I hereby declare that this plat, survey or report was made by me or under my direct personal supervision and that I am a duly registered Land Surveyor under the laws of the State of Iowa.~~

Signed: _____

SEAL

JONES COUNTY ENGINEER'S OFFICE

19501 HWY. 64,
ANAMOSA, IOWA,
52205 (319)462-3785

T