

Instrument #: 2014-1492  
 06/16/2014 01:10:03 PM Total Pages: 1  
 ZSC SECTION CORNER CERTIFICATE  
 Recording Fee: \$7.00 Transfer Tax: \$0  
 Marie Krutzfield, Recorder, Jones County Iowa



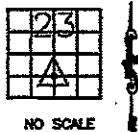
PREPARED BY PATRICK E. POWELL PLS #20854, 8991 160th Ave., OLIN, IOWA, 52320

# UNITED STATES PUBLIC LAND SURVEY CORNER CERTIFICATE

LAND SURVEY MONUMENTS SITUATED IN SECTION 23, TOWNSHIP 84  
 NORTH, RANGE 3 WEST OF THE 5TH P.M., JONES COUNTY, IOWA

### CORNERS TO BE INDEXED

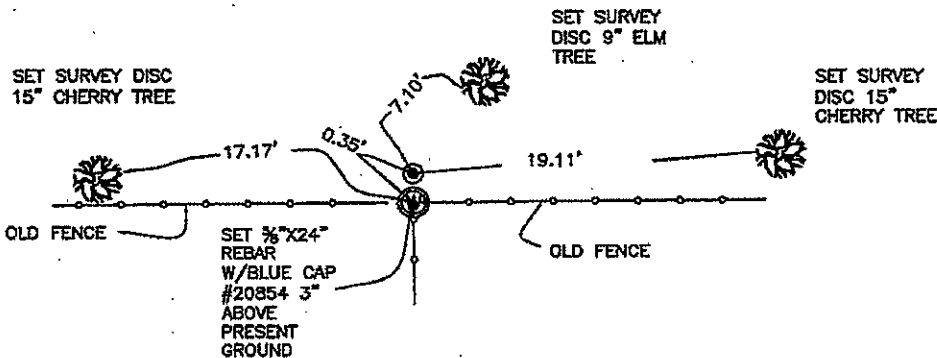
CORNER SECTION TOWNSHIP RANGE  
 SE COR NE-SW 23 84N 3W



State Plane  
 Coordinates  
 Nad 83(2011)  
 Iowa North  
 N 3496157.443  
 E 5556248.277

#### NOTES:

- 1) The State Plane Coordinates as shown are for convenience only. The ties as shown should be used to replace the corner, if destroyed.
- 2) Coordinates as shown are grid coordinates and based on Jones county G.P.S. control network, which in turn is based on Nad 83 Iowa North datum.
- 3) All measurements are in feet and decimals thereof.



Field Notes: Misc. field book  
 2012-2014

Date of field work  
 06-13-2014  
 Powell

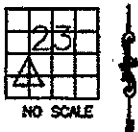
*843235 - 06/16/14*

PREVIOUSLY RECORDED IN BOOK NA, PAGE NA  
 MONUMENT DESCRIPTION AND HOW ESTABLISHED:

SET 5/8" X 24" REBAR WITH BLUE CAP #20854 AT OLD FENCE CORNER SPLIT. FOUND 3/4" IRON ROD STICKING OUT OF THE TOP OF CORNER POST. OLD FENCE LINES SOUTH, EAST, & WEST. BEST EVIDENCE OF CORNER. TIES AS INDICATED.

### CORNERS TO BE INDEXED

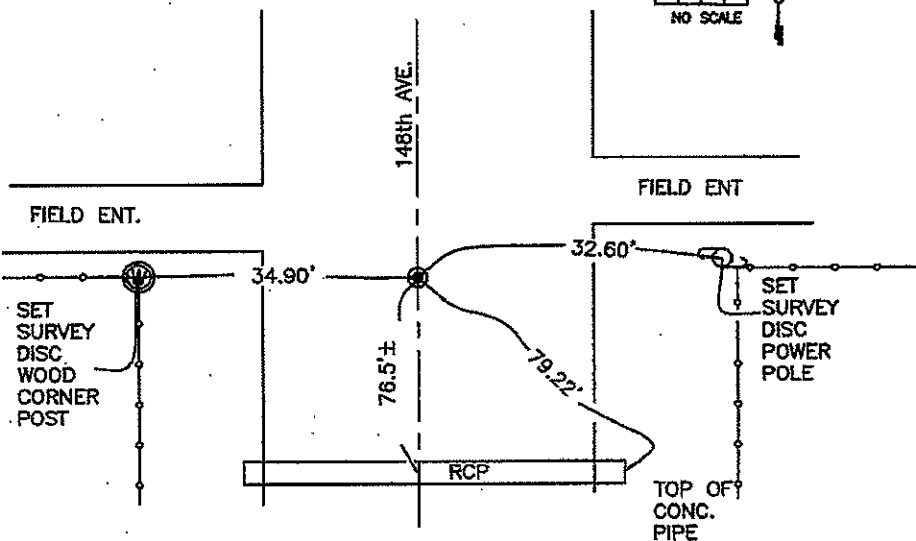
CORNER SECTION TOWNSHIP RANGE  
 SW COR NE-SW 23 84N 3W



State Plane  
 Coordinates  
 Nad 83(2011)  
 Iowa North  
 N 3496117.144  
 E 5554907.434

#### NOTES:

- 1) The State Plane Coordinates as shown are for convenience only. The ties as shown should be used to replace the corner, if destroyed.
- 2) Coordinates as shown are grid coordinates and based on Jones county G.P.S. control network, which in turn is based on Nad 83 Iowa North datum.
- 3) All measurements are in feet and decimals thereof.



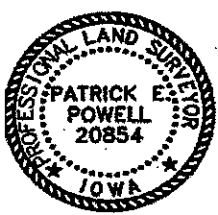
Field Notes: Misc. field book  
 2012-2014

Date of field work 06-13-2014  
 Powell

*843239 - 06/16/14*

PREVIOUSLY RECORDED IN BOOK NA, PAGE NA  
 MONUMENT DESCRIPTION AND HOW ESTABLISHED:

PER PHYSICAL EVIDENCE, OLD ROAD RECORDS & CENTER LINE ROAD PROJECT #295 DATED AUGUST 1955, SET 5/8" X 24" REBAR IN CENTERLINE OF ROAD AND ON LINE WITH FENCES EAST & WEST, BURIED 4" IN PRESENT ROAD BED. TIES AS INDICATED.



I hereby certify that this land surveying document was prepared and the related survey work was performed by me or under my direct personal supervision and that I am a duly licensed Land Surveyor under the laws of the State of Iowa.

Signed: *Patrick E. Powell* Date: *6-16-2014*  
 Patrick E. Powell PLS., No. 20854  
 My license renewal date is December 31, 2015.

Pages or sheets covered by this seal: *1/1*  
 (Entire submission unless specified here)

Patrick E. Powell PLS  
 8991 160th Ave  
 Olin, Iowa, 52320  
 (319)-462-4261