

Instrument #: 2014-1492
 06/16/2014 01:10:03 PM Total Pages: 1
 ZSC SECTION CORNER CERTIFICATE
 Recording Fee: \$7.00 Transfer Tax: \$0
 Marie Krutzfield, Recorder, Jones County Iowa



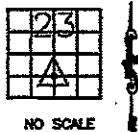
PREPARED BY PATRICK E. POWELL PLS #20854, 8991 160th Ave., OLIN, IOWA, 52320

UNITED STATES PUBLIC LAND SURVEY CORNER CERTIFICATE

LAND SURVEY MONUMENTS SITUATED IN SECTION 23, TOWNSHIP 84
 NORTH, RANGE 3 WEST OF THE 5TH P.M., JONES COUNTY, IOWA

CORNERS TO BE INDEXED

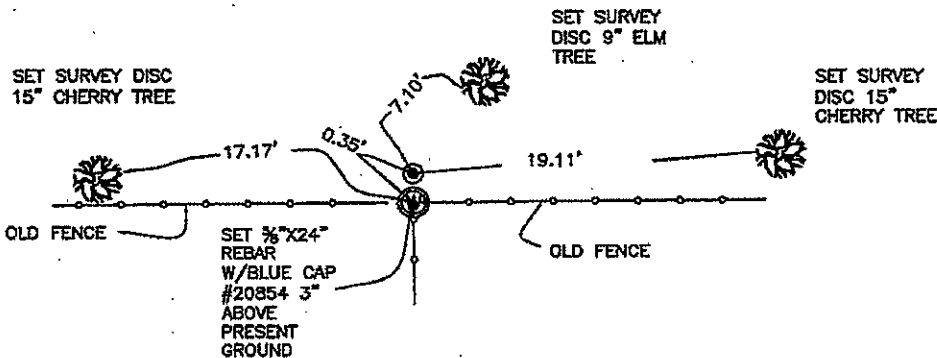
CORNER SECTION TOWNSHIP RANGE
 SE COR NE-SW 23 84N 3W



State Plane
 Coordinates
 Nad 83(2011)
 Iowa North
 N 3496157.443
 E 5556248.277

NOTES:

- 1) The State Plane Coordinates as shown are for convenience only. The ties as shown should be used to replace the corner, if destroyed.
- 2) Coordinates as shown are grid coordinates and based on Jones county G.P.S. control network, which in turn is based on Nad 83 Iowa North datum.
- 3) All measurements are in feet and decimals thereof.



Field Notes: Misc. field book
 2012-2014

Date of field work
 06-13-2014
 Powell

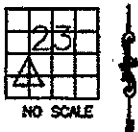
843235-06/16/14

PREVIOUSLY RECORDED IN BOOK NA, PAGE NA
 MONUMENT DESCRIPTION AND HOW ESTABLISHED:

SET 5/8"X24" REBAR WITH BLUE CAP #20854 AT OLD FENCE CORNER SPLIT. FOUND 3/4" IRON ROD STICKING OUT OF THE TOP OF CORNER POST. OLD FENCE LINES SOUTH, EAST, & WEST. BEST EVIDENCE OF CORNER. TIES AS INDICATED.

CORNERS TO BE INDEXED

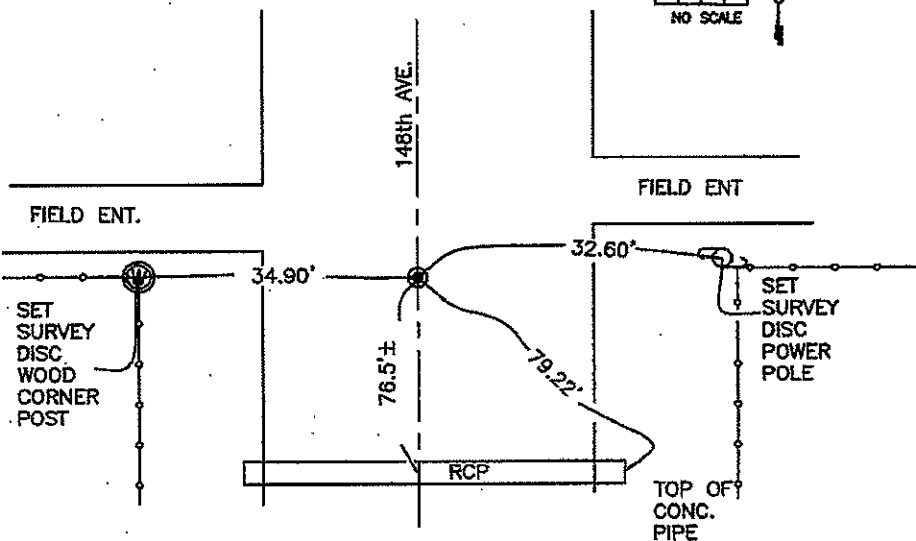
CORNER SECTION TOWNSHIP RANGE
 SW COR NE-SW 23 84N 3W



State Plane
 Coordinates
 Nad 83(2011)
 Iowa North
 N 3496117.144
 E 5554907.434

NOTES:

- 1) The State Plane Coordinates as shown are for convenience only. The ties as shown should be used to replace the corner, if destroyed.
- 2) Coordinates as shown are grid coordinates and based on Jones county G.P.S. control network, which in turn is based on Nad 83 Iowa North datum.
- 3) All measurements are in feet and decimals thereof.



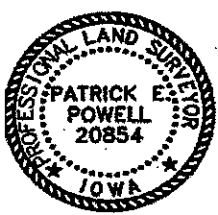
Field Notes: Misc. field book
 2012-2014

Date of field work 06-13-2014
 Powell

843239-06/16/14

PREVIOUSLY RECORDED IN BOOK NA, PAGE NA
 MONUMENT DESCRIPTION AND HOW ESTABLISHED:

PER PHYSICAL EVIDENCE, OLD ROAD RECORDS & CENTER LINE ROAD PROJECT #295 DATED AUGUST 1955, SET 5/8"X24" REBAR IN CENTERLINE OF ROAD AND ON LINE WITH FENCES EAST & WEST, BURIED 4" IN PRESENT ROAD BED. TIES AS INDICATED.



I hereby certify that this land surveying document was prepared and the related survey work was performed by me or under my direct personal supervision and that I am a duly licensed Land Surveyor under the laws of the State of Iowa.

Signed: *Patrick E. Powell* Date: *6-16-2014*
 Patrick E. Powell PLS., No. 20854
 My license renewal date is December 31, 2015.

Pages or sheets covered by this seal: *1/1*
 (Entire submission unless specified here)

Patrick E. Powell PLS
 8991 160th Ave
 Olin, Iowa, 52320
 (319)-462-4261