

Instrument #: 2014-1491  
 06/15/2014 01:10:03 PM Total Pages: 1  
 ZSC SECTION CORNER CERTIFICATE  
 Recording Fee: \$7.00 Transfer Tax: \$0  
 Marie Krutzfield, Recorder, Jones County Iowa



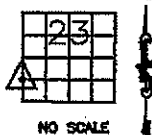
PREPARED BY PATRICK E. POWELL PLS #20854, 8991 160th Ave., OLIN, IOWA, 52320

# UNITED STATES PUBLIC LAND SURVEY CORNER CERTIFICATE

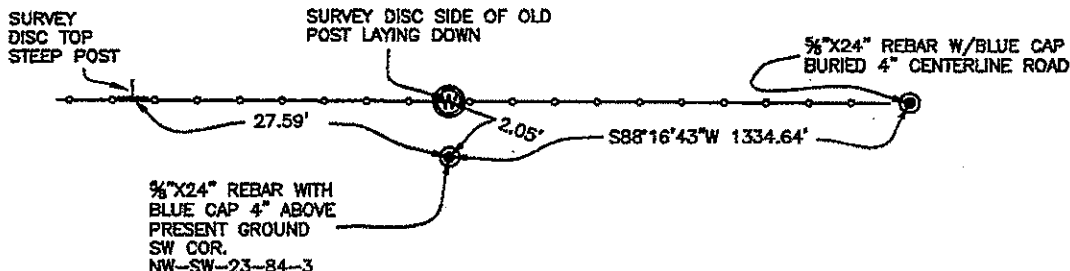
LAND SURVEY MONUMENTS SITUATED IN SECTION 23, TOWNSHIP 84  
 NORTH, RANGE 3 WEST OF THE 5TH P.M., JONES COUNTY, IOWA

### CORNERS TO BE INDEXED

CORNER	SECTION	TOWNSHIP	RANGE
SW COR NW-SW	23	84N	3W



State Plane  
 Coordinates  
 Nad 83(2011)  
 Iowa North  
 N 3496077.049  
 E 5553573.391



NOTES:  
 1) The State Plane Coordinates as shown are for convenience only. The ties as shown should be used to replace the corner, if destroyed.  
 2) Coordinates as shown are grid coordinates and based on Jones county G.P.S. control network, which in turn is based on Nad 83(2011) Iowa North datum.  
 3) All measurements are in feet and decimals thereof.

PREVIOUSLY RECORDED IN BOOK NA, PAGE NA  
 MONUMENT DESCRIPTION AND HOW ESTABLISHED \_\_\_\_\_

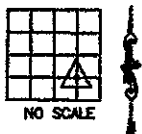
FOUND OLD END POST (BROKEN AND LAYING ON GROUND) AT FENCE SPLIT. USED AS BEST EVIDENCE OF CORNER. SET 1/2" X 24" REBAR WITH BLUE CAP #20854 AT BASE OF OLD POST. TIES AS INDICATED FOR SW COR. NW-SW-23-84-3

Field Notes: Misc. field book - 2012-2014

Date of field work  
 06-13-2014  
 Powell

### CORNERS TO BE INDEXED

CORNER	SECTION	TOWNSHIP	RANGE
--------	---------	----------	-------



PREVIOUSLY RECORDED IN BOOK \_\_\_\_\_, PAGE \_\_\_\_\_  
 MONUMENT DESCRIPTION AND HOW ESTABLISHED \_\_\_\_\_

*84323P-061514*



I hereby certify that this land surveying document was prepared and the related survey work was performed by me or under my direct personal supervision and that I am a duly licensed Land Surveyor under the laws of the State of Iowa.  
 Signed: *Patrick E. Powell* Date: *6-15-2014*  
 Patrick E. Powell PLS., No. 20854  
 My license renewal date is December 31, 2015.  
 Pages or sheets covered by this seal: *1/1*  
 (Entire submission unless specified here)

Patrick E. Powell PLS  
 8991 160th Ave  
 Olin, Iowa, 52320  
 (319)-462-4261