

# THIS IS NOT A CERTIFICATION

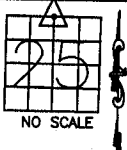
JONES COUNTY ENGINEER'S OFFICE, 19501 HWY. 64, ANAMOSA, IOWA, 52205 (319)462-3785

## UNITED STATES PUBLIC LAND SURVEY CORNER CERTIFICATE

LAND SURVEY MONUMENTS SITUATED IN SECTION 25, TOWNSHIP 84 NORTH, RANGE 3 WEST OF THE 5TH P.M., JONES COUNTY, IOWA

### CORNERS TO BE INDEXED

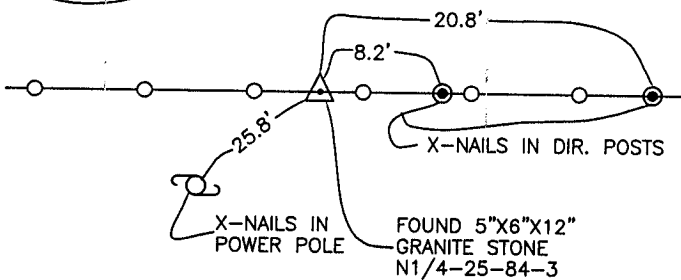
CORNER SECTION TOWNSHIP RANGE  
N-QUARTER 25 84N 3W  
OFFICE FILE NO.



84325c\_040804.tif

DOT REF:  
PROJ. NO. F-64-1(0)--20-53

5-12-76

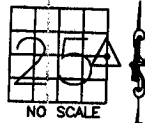


1654 ✓

PREVIOUSLY RECORDED IN BOOK \_\_\_\_\_, PAGE \_\_\_\_\_  
MONUMENT DESCRIPTION AND HOW ESTABLISHED FOUND  
5"x6"x12" GRANITE STONE FLUSH WITH SURFACE. SET REFERENCE POINTS AND TIED AS INDICATED. NORTH QUARTER CORNER SECTION 25, TOWNSHIP 84 NORTH, RANGE 3 WEST OF THE 5TH PRINCIPAL MERIDIAN, JONES COUNTY, IOWA.

### CORNERS TO BE INDEXED

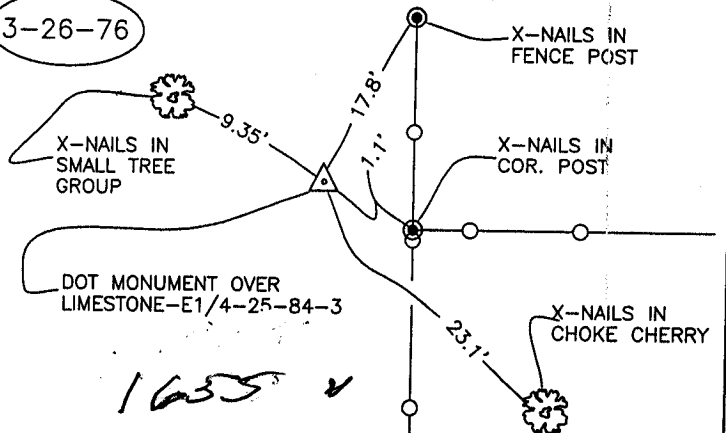
CORNER SECTION TOWNSHIP RANGE  
E-QUARTER 25 84N 3W  
OFFICE FILE NO.



84325o\_040804.tif

DOT REF:  
PROJ. NO. F-64-1(2)--20-53

3-26-76

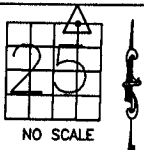


1635 ✓

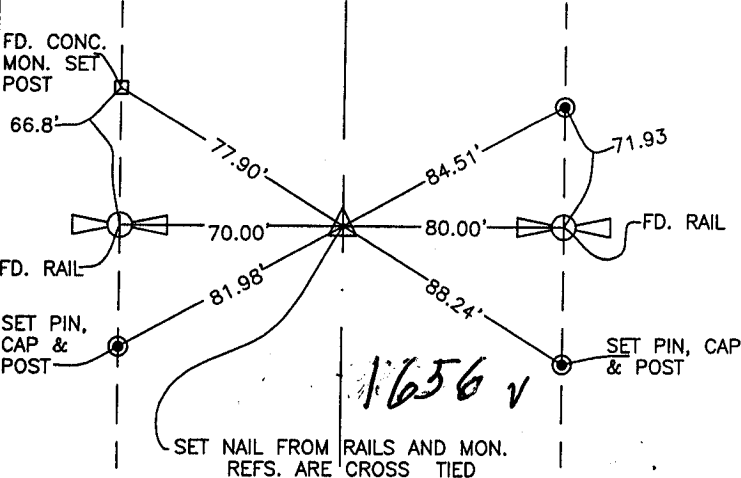
PREVIOUSLY RECORDED IN BOOK \_\_\_\_\_, PAGE \_\_\_\_\_  
MONUMENT DESCRIPTION AND HOW ESTABLISHED FOUND  
4"x5"x11" LIMESTONE, SET DEPARTMENT OF TRANSPORTATION MONUMENT ABOVE. SET REFERENCE POINTS AND TIED OUT AS INDICATED. EAST QUARTER CORNER SECTION 25, TOWNSHIP 84 NORTH, RANGE 3 WEST OF THE 5TH PRINCIPAL MERIDIAN, JONES COUNTY, IOWA.

### CORNERS TO BE INDEXED

CORNER SECTION TOWNSHIP RANGE  
NW-COR, 25 84N 3W  
NW1/4, NE1/4  
OFFICE FILE NO.  
84325d\_040804.tif



POT 454+53.20  
CL #38

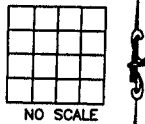


1656 ✓

PREVIOUSLY RECORDED IN BOOK \_\_\_\_\_, PAGE \_\_\_\_\_  
MONUMENT DESCRIPTION AND HOW ESTABLISHED NAIL SET,  
INFORMATION PER DENNIS KUNZE, 1-6-92, NORTHEAST CORNER, NORTHWEST QUARTER, NORTHWEST QUARTER, SECTION 25, TOWNSHIP 84N, RANGE 3 WEST OF THE 5TH PRINCIPAL MERIDIAN, JONES COUNTY, IOWA.

### CORNERS TO BE INDEXED

CORNER SECTION TOWNSHIP RANGE  
OFFICE FILE NO.



PREVIOUSLY RECORDED IN BOOK \_\_\_\_\_, PAGE \_\_\_\_\_  
MONUMENT DESCRIPTION AND HOW ESTABLISHED \_\_\_\_\_

~~I hereby declare that this plat, survey or report was made by me or under my direct personal supervision and that I am a duly registered Land Surveyor under the laws of the State of Iowa.~~

Signed: \_\_\_\_\_

SEAL

JONES COUNTY ENGINEER'S OFFICE  
  
19501 HWY. 64, ANAMOSA, IOWA, 52205 (319)462-3785

# UNITED STATES PUBLIC LAND SURVEY CORNER CERTIFICATE OF

LAND SURVEY MONUMENTS SITUATED IN SECTION 25, TOWNSHIP 84, RANGE 3W, OF THE 5TH PRINCIPAL MERIDIAN JONES COUNTY IOWA.  
PREVIOUSLY RECORDED IN DOES NOT APPLY IN COUNTY RECORDER'S OFFICE.

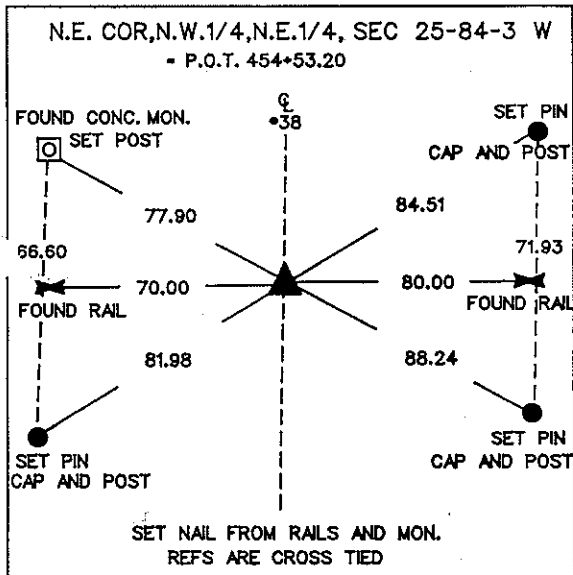
(book, page, document number, etc.)

(Show reason for preparing this certificate, the evidence and detailed procedures used in establishing the corner positions and monumentation found or placed.)

MONUMENT DESCRIPTION AND REMARKS: RE-REFERENCED CORNER AFTER  
RESURFACING HIGHWAY #38 USING I.S.H.C. INFORMATION  
AND EXISTING REFS. :D. GRANT CEDAR RAPIDS CONST.

## PLAN - VIEW

(Show a minimum of three reference ties to durable physical objects, relevant monuments and physical conditions that will enable recovery of the corner.)

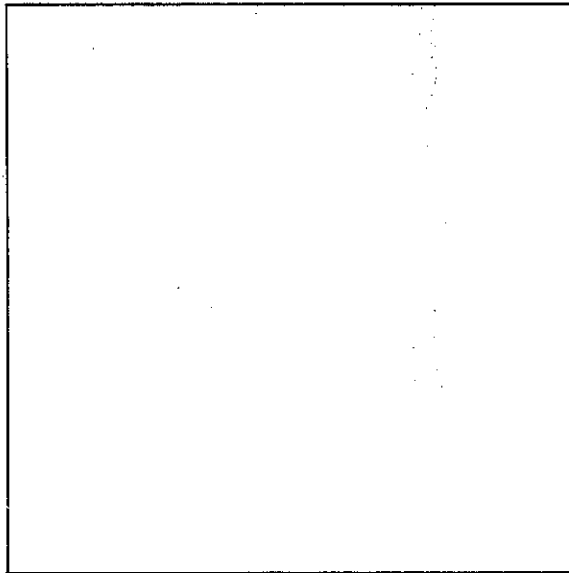
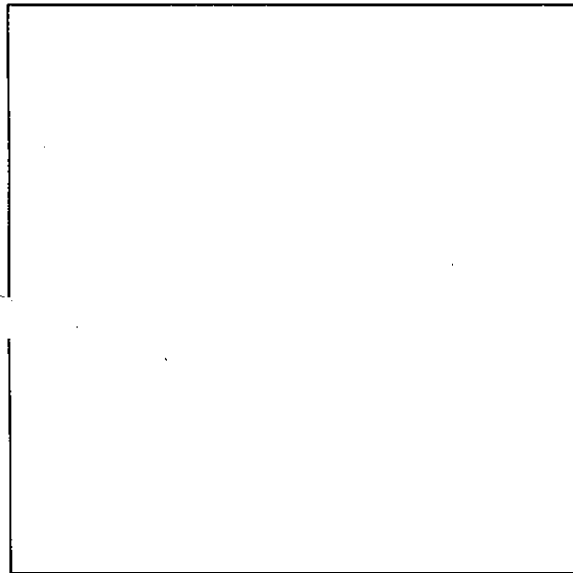
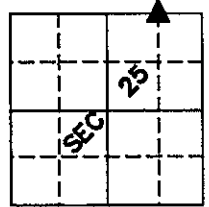


1560

FILED  
RECORDERS OFFICE  
JONES COUNTY IOWA

92 JAN -6 AM 9:00

BOOK 312 PAGE 155  
DORIS JEANNE HERREN  
RECORDER S.O.D.pd



I hereby certify that the survey work was completed and this certificate was prepared by me or under my direct personal supervision and that I am a duly registered land surveyor under the laws of the state of Iowa.

Signature: *Dennis R. Kunze*  
DENNIS R. KUNZE

Date: 1-6-1992 Reg. No. 10679



LAND CORNERS TO BE RECORDED

Corners	Section	Twp.	Range
NE, NW 1/4, NE 1/4	25	T-84-N	R-3-W