

# UNITED STATES PUBLIC LAND SURVEY CORNER CERTIFICATE OF

LAND SURVEY MONUMENTS SITUATED IN SECTION 19, TOWNSHIP 84 NORTH, RANGE 2 WEST, OF THE 5TH PRINCIPAL MERIDIAN JONES COUNTY IOWA.  
PREVIOUSLY RECORDED IN DOES NOT APPLY IN COUNTY RECORDER'S OFFICE.

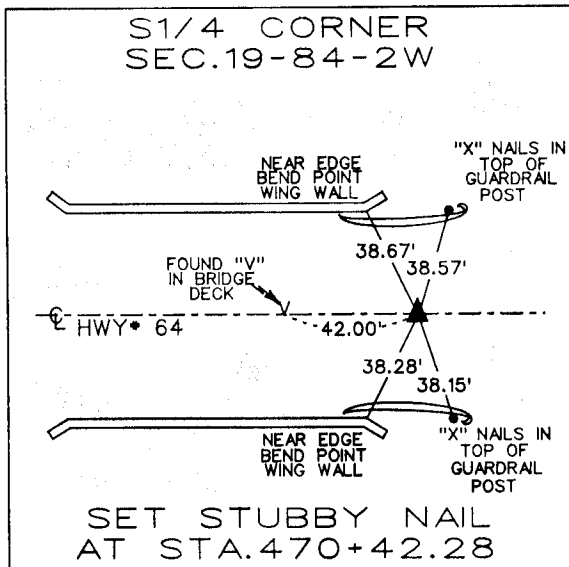
(book, page, document number, etc.)

(Show reason for preparing this certificate, the evidence and detailed procedures used in establishing the corner positions and monumentation found or placed.)

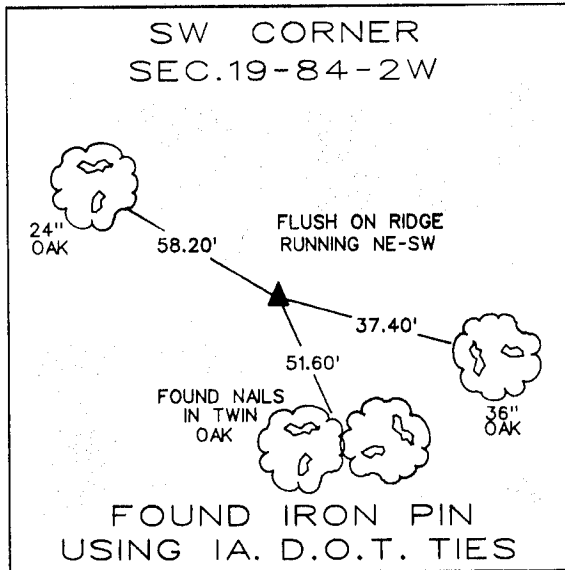
MONUMENT DESCRIPTION AND REMARKS: \_\_\_\_\_  
\_\_\_\_\_  
\_\_\_\_\_

## PLAN - VIEW

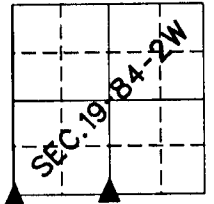
(Show a minimum of three reference ties to durable physical objects, relevant monuments and physical conditions that will enable recovery of the corner.)



ONCARD 11-22-93 M.S.



ONCARD NE COR SEC 25 T84N R3W M.S.



I HEREBY CERTIFY THAT THIS LAND SURVEYING DOCUMENT WAS PREPARED BY ME OR UNDER MY DIRECT PERSONAL SUPERVISION AND THAT I AM A DULY REGISTERED LAND SURVEYOR UNDER THE LAWS OF THE STATE OF IOWA.

SIGNATURE: *Dennis R. Kunze*  
Name: DENNIS R. KUNZE

DATE: 7-27-1993 REG. No. 10679  
(Month, day, year)

MY REGISTRATION EXPIRES DECEMBER 31, 1994



### LAND CORNERS TO BE RECORDED

Corners	Section	Twp.	Range
S1/4	19	83	2W
SW	19	83	2W