

20022550

FILED  
RECORDERS OFFICE  
JONES COUNTY IOWA

2002 JL 12 AM 9:13

MARIE KRUTZFIELD  
RECORDER No Fee

J.D. Tjepkes, LS. JONES COUNTY ENGINEER'S OFFICE, 19501 HWY. 64, ANAMOSA, IOWA, 52205 (319)462-3785

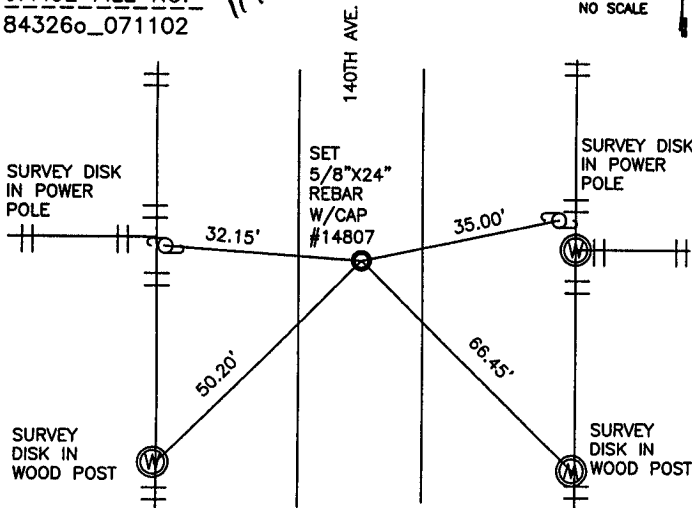
# UNITED STATES PUBLIC LAND SURVEY CORNER CERTIFICATE

LAND SURVEY MONUMENTS SITUATED IN SECTION 26, TOWNSHIP 84  
NORTH, RANGE 3 WEST OF THE 5TH P.M., JONES COUNTY, IOWA

### CORNERS TO BE INDEXED

CORNER SECTION TOWNSHIP RANGE  
E1/4 26 84N 3W

OFFICE FILE NO. 1141  
84326e\_071102



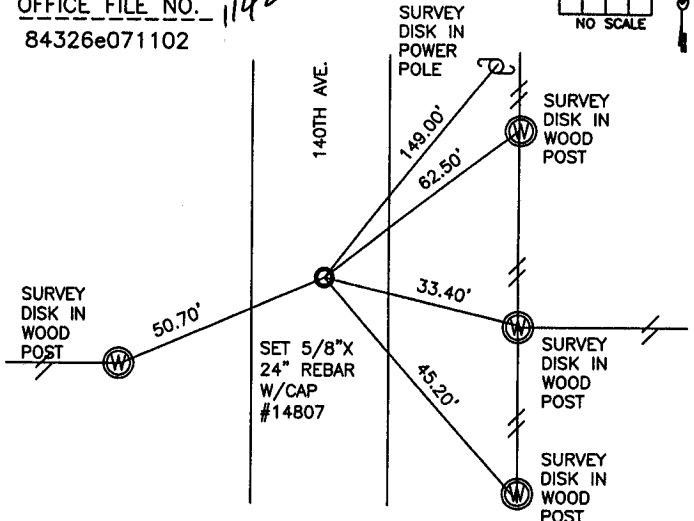
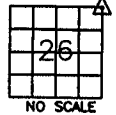
PREVIOUSLY RECORDED IN BOOK NA, PAGE NA  
MONUMENT DESCRIPTION AND HOW ESTABLISHED  
SPLIT SECTION LINE AND USED PHYSICAL EVIDENCE OF  
CENTER LINE ROAD. SET 5/8\"/>

FIELD WORK  
COMPLETED  
6-25-02  
BK. #361 P.38

### CORNERS TO BE INDEXED

CORNER SECTION TOWNSHIP RANGE  
NE 26 84N 3W

OFFICE FILE NO. 1142  
84326e071102



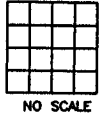
PREVIOUSLY RECORDED IN BOOK NA, PAGE NA  
MONUMENT DESCRIPTION AND HOW ESTABLISHED

USED PRORATION FROM FD. PIN @ S.E. CORNER SEC.26  
TO FD. MONUMENT @ E1/4 SEC.23 AND PHYSICAL  
EVIDENCE OF ROAD. SET 5/8\"/>

### CORNERS TO BE INDEXED

CORNER SECTION TOWNSHIP RANGE

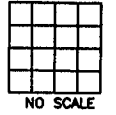
OFFICE FILE NO. \_\_\_\_\_



### CORNERS TO BE INDEXED

CORNER SECTION TOWNSHIP RANGE


OFFICE FILE NO. \_\_\_\_\_



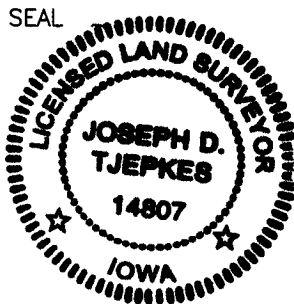
PREVIOUSLY RECORDED IN BOOK \_\_\_\_\_, PAGE \_\_\_\_\_  
MONUMENT DESCRIPTION AND HOW ESTABLISHED \_\_\_\_\_

PREVIOUSLY RECORDED IN BOOK \_\_\_\_\_, PAGE \_\_\_\_\_  
MONUMENT DESCRIPTION AND HOW ESTABLISHED \_\_\_\_\_

I hereby declare that this plat, survey or report was made by me or under my direct personal supervision and that I am a duly registered Land Surveyor under the laws of the State of Iowa.

Signed:  7.11.02

Joseph D. Tjepkes L.S. Iowa Reg. No. 14807  
My Registration Renewal Date is December 31, 2002



J.D. Tjepkes LS 14807  
JONES COUNTY  
ENGINEER'S OFFICE

19501 HWY. 64,  
ANAMOSA, IOWA,  
52205 (319)462-3785