

2002 2549

FILED
RECORDERS OFFICE
JONES COUNTY IOWA

2002 JL 12 AM 9:12

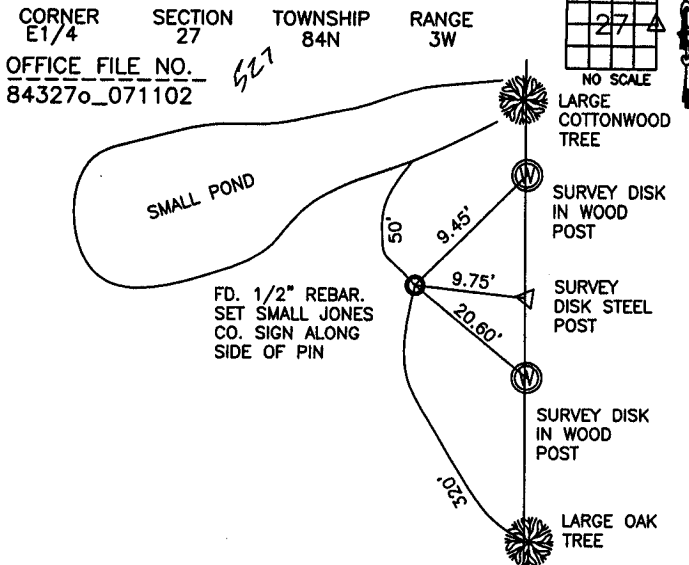
MARIE KRUTZFIELD
RECORDER *NO FEE*

J.D. TJEPKES, LS. JONES COUNTY ENGINEER'S OFFICE, 19501 HWY. 64, ANAMOSA, IOWA, 52205 (319)462-3785

UNITED STATES PUBLIC LAND SURVEY CORNER CERTIFICATE

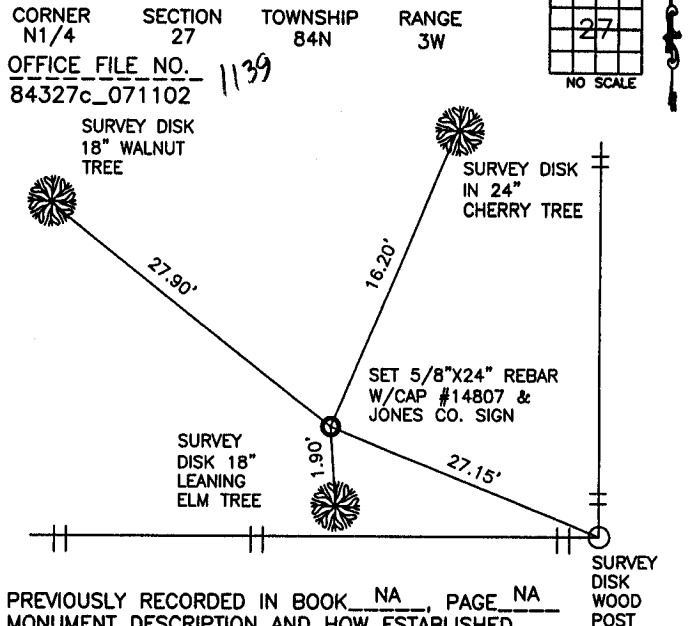
LAND SURVEY MONUMENTS SITUATED IN SECTION 27, TOWNSHIP 84
NORTH, RANGE 3 WEST OF THE 5TH P.M., JONES COUNTY, IOWA

CORNERS TO BE INDEXED



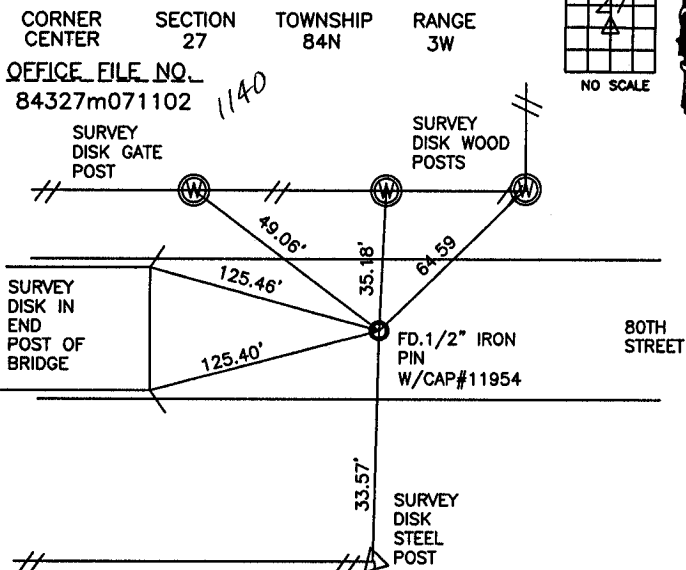
PREVIOUSLY RECORDED IN BOOK NA, PAGE NA
MONUMENT DESCRIPTION AND HOW ESTABLISHED
FD. 1/2" REBAR W/CAP #11954
(JOHNSON) PER TIES RECORDED IN
JONES CO. ENGINEERS OFFICE. RETIED
AS INDICATED. FIELD WORK
COMPLETED
5-17-02
FIELD BK. 361 P.8

CORNERS TO BE INDEXED



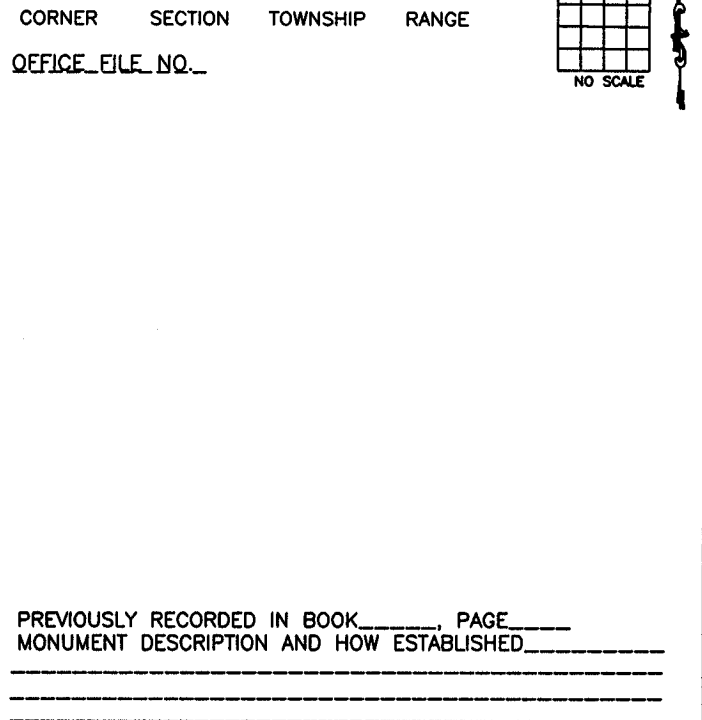
PREVIOUSLY RECORDED IN BOOK NA, PAGE NA
MONUMENT DESCRIPTION AND HOW ESTABLISHED
SET 5/8"x24" REBAR W/CAP #14807 &
JONES CO. SIGN SURVEY DISK
18" LEANING ELM TREE
FIT GOOD WITH E-W PRORATION. TIED AS INDICATED. FIELD WORK
COMPLETED
6-25-02
FIELD
BK.361
P.37

CORNERS TO BE INDEXED



PREVIOUSLY RECORDED IN BOOK NA, PAGE NA
MONUMENT DESCRIPTION AND HOW ESTABLISHED
USED PLAT OF SURVEY RECORDED BK."K" P110 IN
JONES CO. RECORDERS OFFICE AND FD. 1/2"
REBAR PER LS#11954(JOHNSON). NO TIES
RECORDED. TIED AS INDICATED. FIELD WORK
COMPLETED
7-8-02
BK. #361 P.39

CORNERS TO BE INDEXED

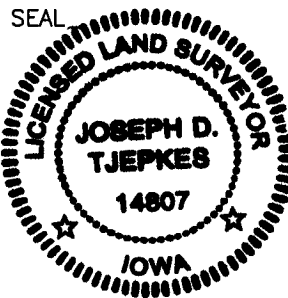


PREVIOUSLY RECORDED IN BOOK _____, PAGE _____
MONUMENT DESCRIPTION AND HOW ESTABLISHED _____

I hereby declare that this plat, survey or report was made by me or under my direct personal supervision and that I am a duly registered Land Surveyor under the laws of the State of Iowa.

Signed: *[Signature]* 7-11-02

Joseph D. Tjepkes L.S. Iowa Reg. No. 14807
My Registration Renewal Date is December 31, 2002



J.D. TJEPKES LS 14807
JONES COUNTY
ENGINEER'S OFFICE

19501 HWY. 64,
ANAMOSA, IOWA,
52205 (319)462-3785