

COPY

Jones County Marie Krutzfield Recorder
 Fee Book 2012 0534
 03/02/2012 @0340PM # Pages 1
 ZSC SEC COR CERT
 Total Fees: \$0.00

PREPARED BY
 CLARENCE J. WALTON, JONES COUNTY ENGINEER'S OFFICE, 19501 HWY. 64, ANAMOSA, IOWA, 52205 (319) 462-3785

UNITED STATES PUBLIC LAND SURVEY CORNER CERTIFICATE

LAND SURVEY MONUMENTS SITUATED IN SECTION 28, TOWNSHIP 84 NORTH,
 RANGE 3 WEST OF THE 5TH PRINCIPAL MERIDIAN, JONES COUNTY, IOWA.

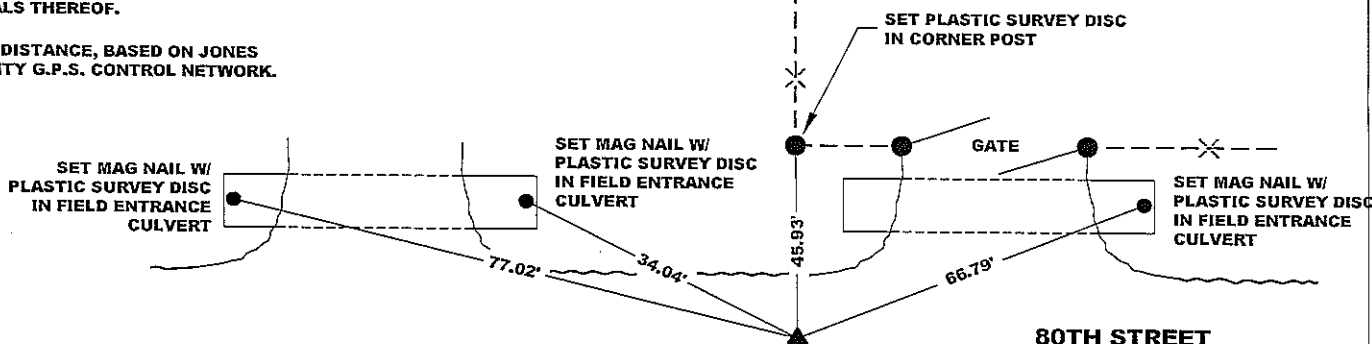
STATE PLANE COORDINATE
 NAD 83 IOWA NORTH
 N:
 E:

CORNER CENTER SECTION 28 TOWNSHIP T84N RANGE R3W

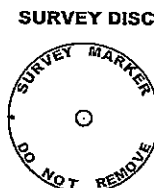
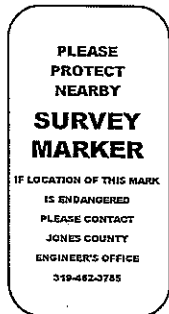


NOTES:

- 1) THE STATE PLANE COORDINATES AS SHOWN ARE FOR CONVENIENCE ONLY. THE TIES AS SHOWN SHOULD BE USED TO REPLACE THE CORNER, IF DESTROYED.
- 2) COORDINATES AS SHOWN ARE GRID COORDINATES AND BASED ON JONES COUNTY G.P.S. CONTROL NETWORK WHICH IN TURN IS BASED ON NAD 83 IOWA NORTH DATUM.
- 3) ALL MEASUREMENTS ARE IN FEET AND DECIMALS THEREOF.
- 4) * GRID DISTANCE, BASED ON JONES COUNTY G.P.S. CONTROL NETWORK.



"SURVEY MARKER" SIGN



165TH AVENUE

80TH STREET

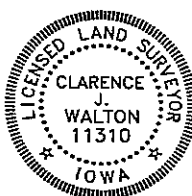
CENTER SECTION 9-T86N-R2W
 5/8" REBAR W/ OPC #11310
 N:
 E:

LEGEND

- OPC ORANGE PLASTIC CAP
- () RECORDED AS
- STEEL FENCE POST W/ "SURVEY MARKER" SIGN

PREVIOUSLY RECORDED IN JONES COUNTY, IOWA RECORDER'S DOCUMENT 2002 2353
 MONUMENT DESCRIPTION AND HOW ESTABLISHED SET 5/8" X 24" REBAR WITH ORANGE PLASTIC CAP #11310 AT FORMER POSITION OF 5/8" X 24" REBAR WITH ORANGE PLASTIC CAP #14807 AS REFERENCED IN JONES COUNTY, IOWA RECORDER'S DOCUMENT 2002 2353. REBAR WAS SET 10" BELOW PRESENT ROAD SURFACE. FORMER CORNER MONUMENT WAS REMOVED DUE TO ROAD CONSTRUCTION ACTIVITIES.

FIELD BOOK 361, PAGE 29 DATE OF SURVEY: DECEMBER 14, 2011



I hereby certify that this land surveying document and the related survey work was performed by me or under my direct personal supervision and that I am a duly registered Land Surveyor under the laws of the State of Iowa.
 Signed: *Clarence J. Walton* 3/2/12
 Clarence J. Walton, L.S.
 My Registration Renewal Date is December 31, 2013
 Iowa License Number 11310
 Pages or sheets covered by this seal: 1 of 1.

- A. THERE IS NO CERTIFICATE FOR THE CORNER ON FILE WITH THE RECORDER OF THE COUNTY IN WHICH THE CORNER IS LOCATED.
- B. THE CORNER MONUMENT HAS BEEN REPLACED OR MODIFIED.
- C. THE SURVEYOR IN RESPONSIBLE CHARGE OF THE LAND SURVEYING ACCEPTS A CORNER POSITION THAT DIFFERS FROM THAT SHOWN IN THE PUBLIC RECORDS OF THE COUNTY IN WHICH THE CORNER IS LOCATED.
- D. THE REFERENCE TIES REFERRED TO IN AN EXISTING PUBLIC RECORD NO LONGER EXIST.
- E. EXISTING CORNER TIES UPDATED.

CORNERS TO BE INDEXED

CORNER	SECTION	TOWNSHIP	RANGE
CENTER	28	84N	3W

JONES COUNTY ENGINEER'S OFFICE



19501 HWY. 64, ANAMOSA, IOWA 52205
 (319) 462-3785

2002 2353

FILED
RECORDERS OFFICE
JONES COUNTY IOWA

2002 JUN 28 AM 8:16

MARIE KRUTZFIELD
RECORDER *NO FEE*

J.D. TJEPKES, LS. JONES COUNTY ENGINEER'S OFFICE, 19501 HWY. 64, ANAMOSA, IOWA, 52205 (319)462-3785

UNITED STATES PUBLIC LAND SURVEY CORNER CERTIFICATE

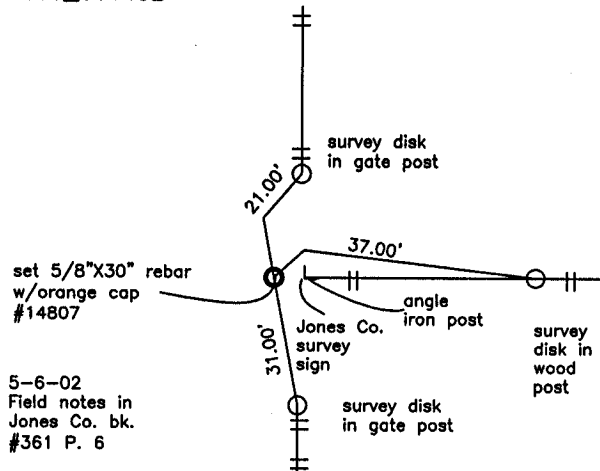
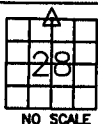
LAND SURVEY MONUMENTS SITUATED IN SECTION 28, TOWNSHIP 84
NORTH, RANGE 3 WEST OF THE 5TH P.M., JONES COUNTY, IOWA

CORNERS TO BE INDEXED

CORNER SECTION TOWNSHIP RANGE
N1/4 28 84 3W

OFFICE FILE NO. 1143

84328c_061402



PREVIOUSLY RECORDED IN BOOK NA, PAGE NA
MONUMENT DESCRIPTION AND HOW ESTABLISHED

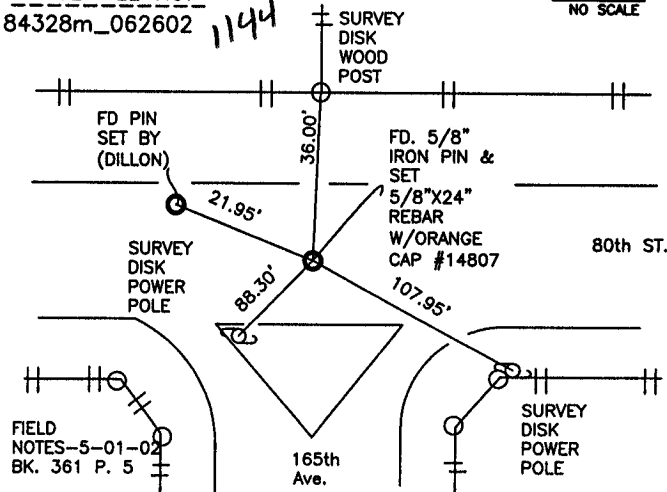
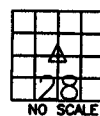
N1/4 SEC.28 T84N R3W SPLIT NORTH LINE OF SEC. 28 & FOUND
2-LIMESTONES STACKED ALONGSIDE OF ANGLE IRON POST. SET 5/8\"/>

CORNERS TO BE INDEXED

CORNER SECTION TOWNSHIP RANGE
center 28 84N 3W

OFFICE FILE NO. 1144

84328m_062602



PREVIOUSLY RECORDED IN BOOK NA, PAGE NA
MONUMENT DESCRIPTION AND HOW ESTABLISHED

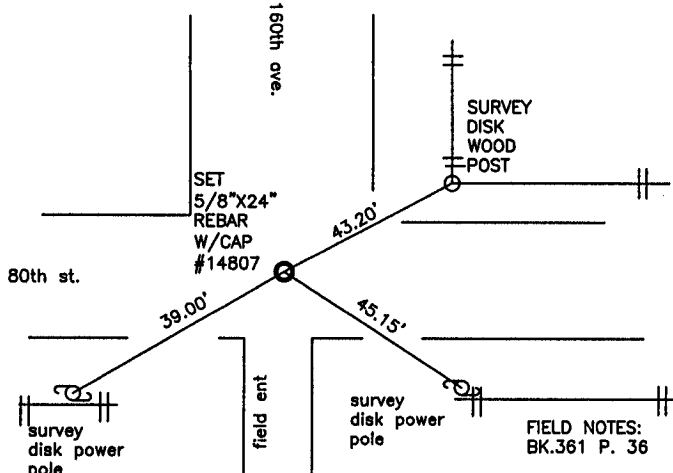
FD.5/8\"/>

CORNERS TO BE INDEXED

CORNER SECTION TOWNSHIP RANGE
E1/4 28 84N 3W

OFFICE FILE NO. 1145

84328o_062602



PREVIOUSLY RECORDED IN BOOK NA, PAGE NA
MONUMENT DESCRIPTION AND HOW ESTABLISHED

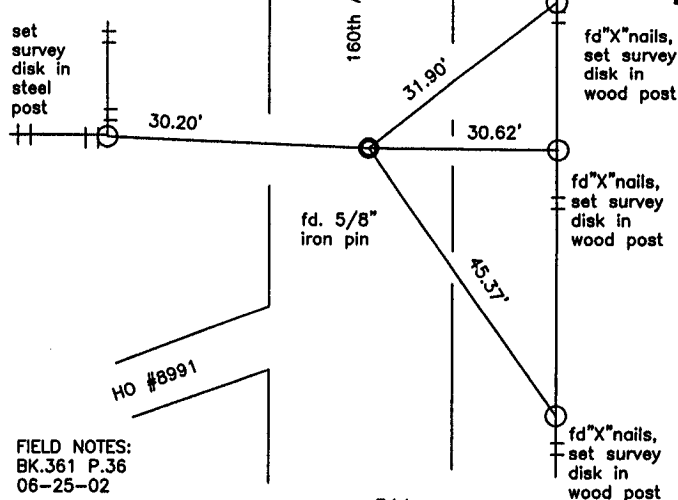
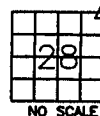
SET 5/8\"/>

CORNERS TO BE INDEXED

CORNER SECTION TOWNSHIP RANGE
NE 28 84N 3W

OFFICE FILE NO. 1146

84328e_062602



FIELD NOTES:
BK.361 P.36
06-25-02

PREVIOUSLY RECORDED IN BOOK 311, PAGE 218
MONUMENT DESCRIPTION AND HOW ESTABLISHED

FD. 5/8\"/>

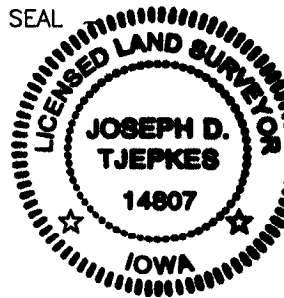
I hereby declare that this plat, survey or report was made by me or under my direct personal supervision and that I am a duly registered Land Surveyor under the laws of the State of Iowa.

Signed:

Joseph D. Tjepkes 6-27-02

Joseph D. Tjepkes L.S. Iowa Reg. No. 14807
My Registration Renewal Date is December 31, 2002

SEAL



J.D. TJEPKES LS 14807
JONES COUNTY
ENGINEER'S OFFICE

19501 HWY. 64,
ANAMOSA, IOWA,
52205 (319)462-3785