

COPY

Jones County Marie Krutzfield Recorder
 Fee Book 2012 0535
 03/02/2012 @0341PM # Pages 1
 ZSC SEC COR CERT
 Total Fees: \$0.00

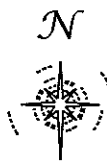
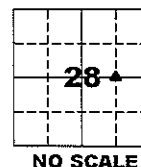
PREPARED BY
 CLARENCE J. WALTON, JONES COUNTY ENGINEER'S OFFICE, 19501 HWY. 64, ANAMOSA, IOWA, 52205 (319) 462-3785

UNITED STATES PUBLIC LAND SURVEY CORNER CERTIFICATE

LAND SURVEY MONUMENTS SITUATED IN SECTION 28, TOWNSHIP 84 NORTH,
 RANGE 3 WEST OF THE 5TH PRINCIPAL MERIDIAN, JONES COUNTY, IOWA.

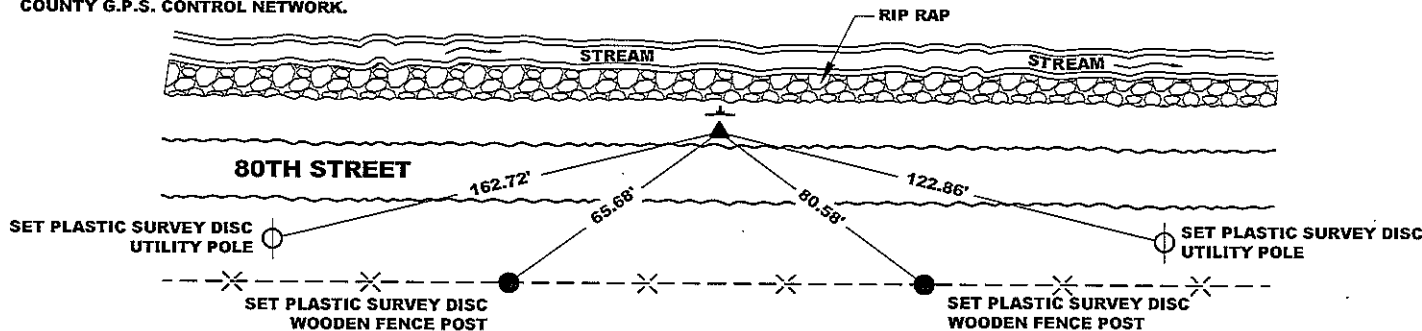
STATE PLANE COORDINATE
 NAD 83 IOWA NORTH
 N:
 E:

CORNER SECTION TOWNSHIP RANGE
 NE CORNER 28 T84N R3W
 NW 1/4 SE 1/4



NOTES:

- 1) THE STATE PLANE COORDINATES AS SHOWN ARE FOR CONVENIENCE ONLY. THE TIES AS SHOWN SHOULD BE USED TO REPLACE THE CORNER, IF DESTROYED.
- 2) COORDINATES AS SHOWN ARE GRID COORDINATES AND BASED ON JONES COUNTY G.P.S. CONTROL NETWORK WHICH IN TURN IS BASED ON NAD 83 IOWA NORTH DATUM.
- 3) ALL MEASUREMENTS ARE IN FEET AND DECIMALS THEREOF.
- 4) * GRID DISTANCE, BASED ON JONES COUNTY G.P.S. CONTROL NETWORK.



"SURVEY MARKER" SIGN



SURVEY DISC



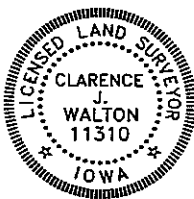
LEGEND

- OPC ORANGE PLASTIC CAP
- () RECORDED AS
- ⊥ STEEL FENCE POST W/ "SURVEY MARKER" SIGN

PREVIOUSLY RECORDED IN JONES COUNTY, IOWA RECORDER'S DOCUMENT 2007 3253

MONUMENT DESCRIPTION AND HOW ESTABLISHED SET 5/8" X 24" REBAR WITH ORANGE PLASTIC CAP #11310 AT FORMER POSITION OF 5/8" X 24" REBAR WITH ORANGE PLASTIC CAP #11310 AS REFERENCED IN JONES COUNTY, IOWA RECORDER'S DOCUMENT 2007 3253. REBAR WAS SET 10" BELOW PRESENT ROAD SURFACE, SET STEEL FENCE POST W/ "SURVEY MARKER" SIGN AS WITNESS TO THE CORNER. FORMER CORNER MONUMENT WAS REMOVED DUE TO ROAD CONSTRUCTION ACTIVITIES.

FIELD BOOK 361, PAGE 30 DATE OF SURVEY: DECEMBER 15, 2011



I hereby certify that this land surveying document and the related survey work was performed by me or under my direct personal supervision and that I am a duly registered Land Surveyor under the laws of the State of Iowa.
 Signed: *Clarence J. Walton* 3/2/12
 Clarence J. Walton, L.S.
 My Registration Renewal Date is December 31, 2013
 Iowa License Number 11310
 Pages or sheets covered by this seal: 1 of 1.

- A. THERE IS NO CERTIFICATE FOR THE CORNER ON FILE WITH THE RECORDER OF THE COUNTY IN WHICH THE CORNER IS LOCATED.
- B. THE CORNER MONUMENT HAS BEEN REPLACED OR MODIFIED.
- C. THE SURVEYOR IN RESPONSIBLE CHARGE OF THE LAND SURVEYING ACCEPTS A CORNER POSITION THAT DIFFERS FROM THAT SHOWN IN THE PUBLIC RECORDS OF THE COUNTY IN WHICH THE CORNER IS LOCATED.
- D. THE REFERENCE TIES REFERRED TO IN AN EXISTING PUBLIC RECORD NO LONGER EXIST.
- E. EXISTING CORNER TIES UPDATED.

CORNERS TO BE INDEXED

CORNER	SECTION	TOWNSHIP	RANGE
NE	28	84N	3W
NW 1/4 SE 1/4	28	84N	3W
SE	28	84N	3W
SW 1/4 NE 1/4	28	84N	3W
SW	28	84N	3W
SE 1/4 NE 1/4	28	84N	3W
NW	28	84N	3W
NE 1/4 SE 1/4	28	84N	3W

JONES COUNTY ENGINEER'S OFFICE



19501 HWY. 64, ANAMOSA, IOWA 52205
 (319) 462-3785


Marie Krutzfield, Recorder
 Jones County, Iowa

PREPARED BY
 CLARENCE J. WALTON, JONES COUNTY ENGINEER'S OFFICE, 19501 HWY. 64, ANAMOSA, IOWA, 52205 (319)462-3785

UNITED STATES PUBLIC LAND SURVEY CORNER CERTIFICATE

LAND SURVEY MONUMENTS SITUATED IN SECTION 28, TOWNSHIP 84 NORTH,
 RANGE 3 WEST OF THE 5TH PRINCIPAL MERIDIAN, JONES COUNTY, IOWA.

CORNER SECTION TOWNSHIP RANGE
 NE 1/4 SE 1/4 28 84N 3W



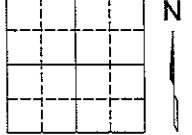
NO SCALE

OFFICE FILE NO.
 843271_100407.tif

STATE PLANE COORDINATE
 NAD 83 IOWA NORTH
 N
 E

NOTE:
 THE STATE PLANE COORDINATE AS INDICATED IS FOR CONVENIENCE ONLY.
 THE TIES AS SHOWN SHOULD BE USED TO REPLACE THE CORNER, IF
 DESTROYED

CORNER SECTION TOWNSHIP RANGE

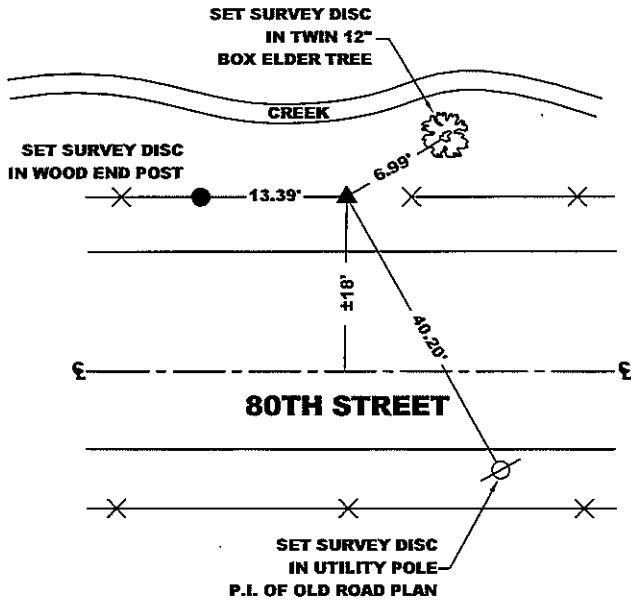


NO SCALE

OFFICE FILE NO.

STATE PLANE COORDINATE
 NAD 83 IOWA NORTH
 N
 E

NOTE:
 THE STATE PLANE COORDINATE AS INDICATED IS FOR CONVENIENCE ONLY.
 THE TIES AS SHOWN SHOULD BE USED TO REPLACE THE CORNER, IF
 DESTROYED



PREVIOUSLY RECORDED IN BOOK N/A, PAGE N/A
 MONUMENT DESCRIPTION AND HOW ESTABLISHED SET 5/8" REBAR
W/ ORANGE PLASTIC CAP "JONES COUNTY 11310" AT SURFACE
EQUIDISTANT AND ON LINE BETWEEN E 1/4 CORNER OF SECTION 28 AND
CENTER OF SECTION 28.

PREVIOUSLY RECORDED IN BOOK _____, PAGE _____
 MONUMENT DESCRIPTION AND HOW ESTABLISHED _____



I hereby certify that this land surveying document and the related survey work was performed by me or under my direct personal supervision and that I am a duly registered Land Surveyor under the laws of the State of Iowa.

Signed: *Clarence J. Walton* 10/5/07
 Clarence J. Walton, L.S.
 My Registration Renewal Date is December 31, 2007
 Iowa License Number 11310
 Pages or sheets covered by this seal: 1 of 1.

- A. THERE IS NO CERTIFICATE FOR THE CORNER ON FILE WITH THE RECORDER OF THE COUNTY IN WHICH THE CORNER IS LOCATED.
- B. THE CORNER MONUMENT HAS BEEN REPLACED OR MODIFIED.
- C. THE SURVEYOR IN RESPONSIBLE CHARGE OF THE LAND SURVEYING ACCEPTS A CORNER POSITION THAT DIFFERS FROM THAT SHOWN IN THE PUBLIC RECORDS OF THE COUNTY IN WHICH THE CORNER IS LOCATED.
- D. THE REFERENCE TIES REFERRED TO IN AN EXISTING PUBLIC RECORD ARE NOT CORRECT.

CORNERS TO BE INDEXED

CORNER	SECTION	TOWNSHIP	RANGE
NE CORNER	28	84N	3W
NW 1/4 SE 1/4	28	84N	3W
SE CORNER	28	84N	3W
SW 1/4 NE 1/4	28	84N	3W
SW CORNER	28	84N	3W
SE 1/4 NE 1/4	28	84N	3W
NW CORNER	28	84N	3W
NE 1/4 SE 1/4	28	84N	3W

JONES COUNTY ENGINEER'S OFFICE



19501 HWY. 64, ANAMOSA, IOWA 52205
 (319) 462-3785