

2003 1840

FILED  
RECORDERS OFFICE  
JONES COUNTY IOWA

03 APR 23 AM 11:22

MARIE KRUTZFIELD  
RECORDER 6.00

Prepared by: SCHNEIDER Land Surveying and Planning, Inc. P.O. Box 105 Peosta, Iowa 52068 563-556-9055

### UNITED STATES PUBLIC LAND SURVEY CORNER CERTIFICATE OF

Land Survey Monuments situated in Section 29, Township 84 North, Range 3 West of the Fifth Principal Meridian, Jones County, Iowa. Previously recorded \_\_\_\_\_

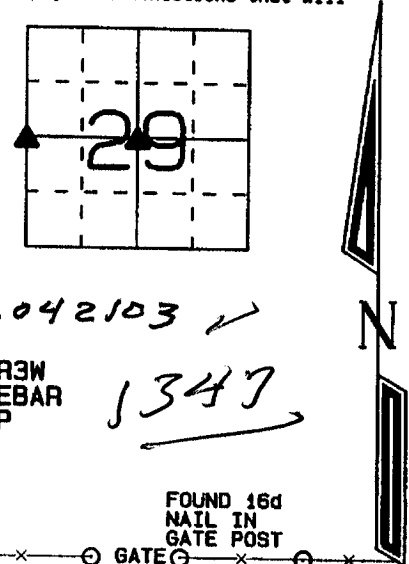
(NONE OF RECORD)

(Show reason for preparing this certificate, the evidence and detailed procedures used in establishing the corner positions and monumentation found or placed.)

Monument Description and Remarks: THE W1/4 CORNER OF SECTION 29 AS ESTABLISHED BY PROJECTING A LINE FROM THE W1/4 CORNER OF SECTION 30 AS OCCUPIED THROUGH THE CENTER OF SAID SECTION 30, BASED ON INFORMATION OBTAINED FROM A REVISED PLAT OF SURVEY FILED DECEMBER 27, 1994 IN PLAT BOOK L, PAGE 20. THE LINE WAS INTERSECTED WITH A LINE FROM THE SW CORNER OF SECTION 29 AS ILLUSTRATED ON THE SAME PLAT THROUGH THE SW CORNER OF THE N1/4 OF THE NW1/4 OF THE SW1/4 OF SAID SECTION 29 AS FENCED AND OCCUPIED. THE POSITION WAS REASONABLE FOR OCCUPATION EVIDENCE, NORTH, SOUTH AND EAST OF THE CORNER. A 1/2" REBAR WITH YELLOW CAP #11310 WAS FOUND AT THE CENTER OF SECTION 29. THE REBAR WAS TIED AND USED AS THE CENTER OF SECTION 29.

### PLAN - VIEW

(Show a minimum of three reference ties to durable physical objects, relevant monuments and physical conditions that will enable recovery of the corner.)



84330-042103  
E 1/4 30 84.3

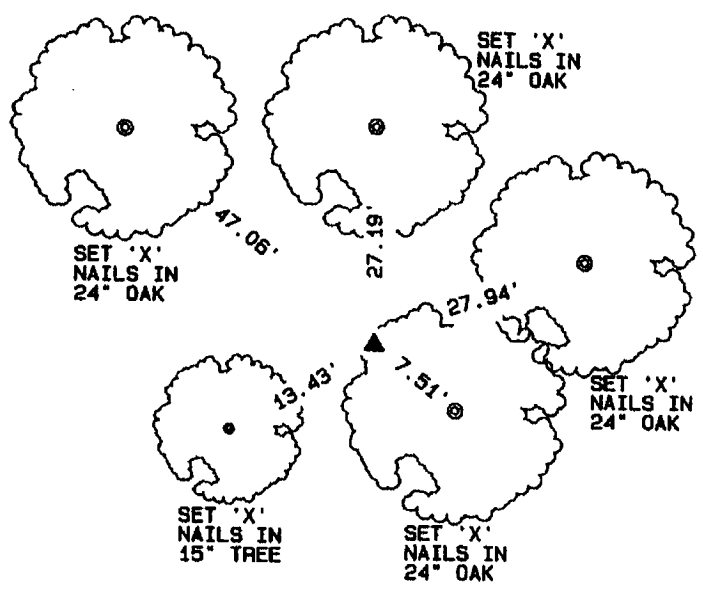
W1/4 CORNER  
SEC. 29, T84N, R3W  
SET 1/2" REBAR  
W YELLOW CAP  
#14417

1346 ✓

84329m-042103 ✓

CENTER  
SEC. 29, T84N, R3W  
FOUND 1/2" REBAR  
W/ YELLOW CAP  
#11310

1347 ✓

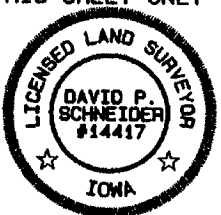


I hereby certify that this land surveying document was prepared and the related survey work was performed by me or under my direct personal supervision and that I am a duly licensed Land Surveyor under the laws of the State of Iowa.

*David P. Schneider* 4/21/2003  
David P. Schneider P.L.S. #14417 Date:  
My license renewal date is December 31, 2003.

Pages or sheets covered by this seal: THIS SHEET ONLY

**SCHNEIDER**  
Land Surveying & Planning, Inc.  
P.O. Box 105 Peosta, Iowa 52068  
Ph. #563-556-9055 Fax #563-556-9054



List Corners to be Indexed			
Corners	Section	Twp	Range
W1/4	29	84N	3W
CENTER	29	84N	3W

M