

COPY

Marie Krutzfield, Recorder
Jones County, Iowa

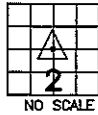
J.D. Tjepkes, LS. JONES COUNTY ENGINEER'S OFFICE, 19501 HWY. 64, ANAMOSA, IOWA, 52205 (319)462-3785

UNITED STATES PUBLIC LAND SURVEY CORNER CERTIFICATE

LAND SURVEY MONUMENTS SITUATED IN SECTION 2, TOWNSHIP 84
NORTH, RANGE 3 WEST OF THE 5TH P.M., JONES COUNTY, IOWA

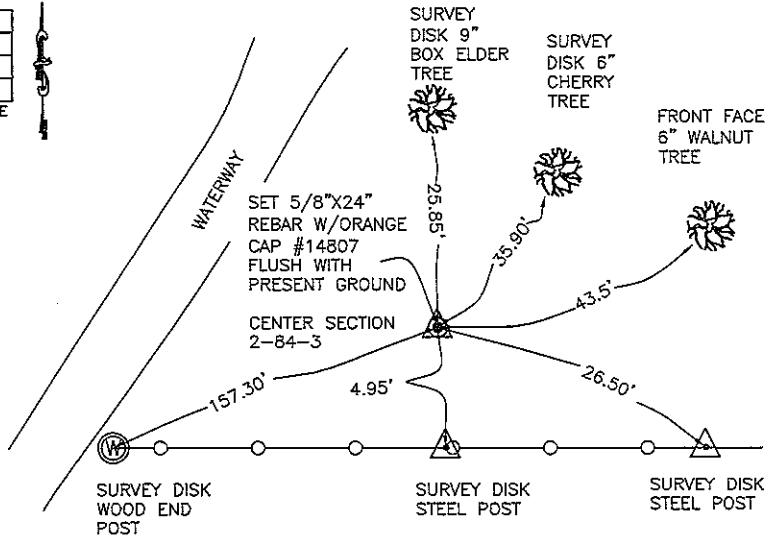
CORNERS TO BE INDEXED

CORNER SECTION TOWNSHIP RANGE
CENTER QT. 2 84N 3W
OFFICE FILE NO.
84302m_061807.tif



STATE PLANE COORDINATE
NAD 83 IOWA NORTH
N 3513483.071
E 5555841.791

NOTE: THE STATE PLANE COORDINATE AS
INDICATED IS FOR CONVENIENCE ONLY.
THE TIES AS SHOWN SHOULD BE USED TO
REPLACE THE CORNER, IF DESTROYED



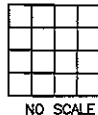
PREVIOUSLY RECORDED IN BOOK 1999, PAGE 1804
MONUMENT DESCRIPTION AND HOW ESTABLISHED _____

PER PLAT OF SURVEY FOR PARCELS #96-84 AND 96-85, ON FILE AT THE JONES COUNTY
RECORDER'S OFFICE IN BOOK 407 PAGE 93, AND SECTION CORNER CERTIFICATES ON FILE
AS DOCUMENT NUMBERS 1999-1804 AND 2003-1072, RESET 5/8"X24" REBAR WITH
ORANGE CAP #14807 FLUSH WITH PRESENT GROUND.
TIES AS INDICATED FOR CENTER SECTION 2 T84N R3W.

FIELD NOTES:
6-18-2007
BOOK 358
PAGE 73

CORNERS TO BE INDEXED

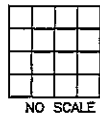
CORNER SECTION TOWNSHIP RANGE
OFFICE FILE NO. _____



PREVIOUSLY RECORDED IN BOOK _____, PAGE _____
MONUMENT DESCRIPTION AND HOW ESTABLISHED _____

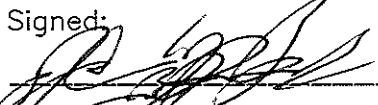
CORNERS TO BE INDEXED

CORNER SECTION TOWNSHIP RANGE
OFFICE FILE NO. _____

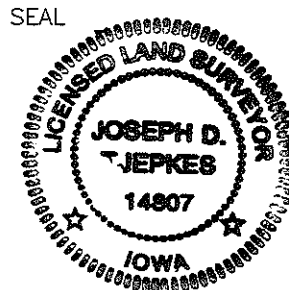


PREVIOUSLY RECORDED IN BOOK _____, PAGE _____
MONUMENT DESCRIPTION AND HOW ESTABLISHED _____

I hereby declare that this plat, survey or report
was made by me or under my direct personal
supervision and that I am a duly registered Land
Surveyor under the laws of the State of Iowa.

Signed:  6-18-07

Joseph D. Tjepkes L.S. Iowa Reg. No. 14807
My Registration Renewal Date is December 31, 2008



J.D. Tjepkes LS 14807
JONES COUNTY
ENGINEER'S OFFICE

19501 HWY. 64,
ANAMOSA, IOWA,
52205 (319)462-3785

2003 1072

FILED
RECORDERS OFFICE
JONES COUNTY IOWA

03 MAR 13 PM 1:16

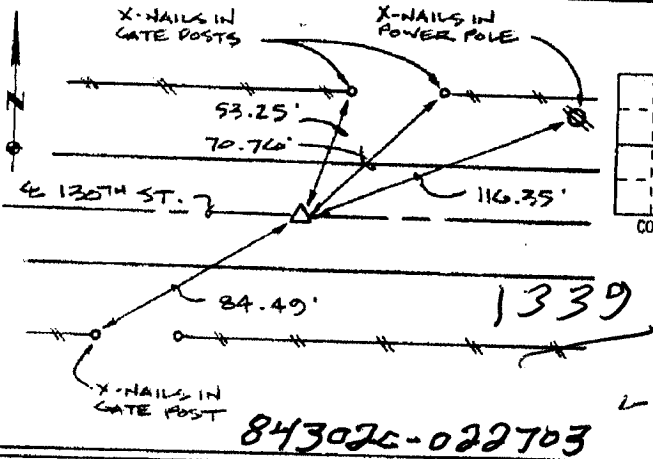
MARIE KRUTZFIELD
RECORDER 6.00PL

PREPARED BY HALL & HALL ENGINEERS, INC. 209 29TH STREET N.E. CEDAR RAPIDS, IOWA 52402 (319) 362-9548

LAND SURVEY MONUMENTS SITUATED IN SECTION 2, TOWNSHIP 84 NORTH,
RANGE 3 WEST, OF THE FIFTH PRINCIPAL MERIDIAN, JONES COUNTY IOWA.

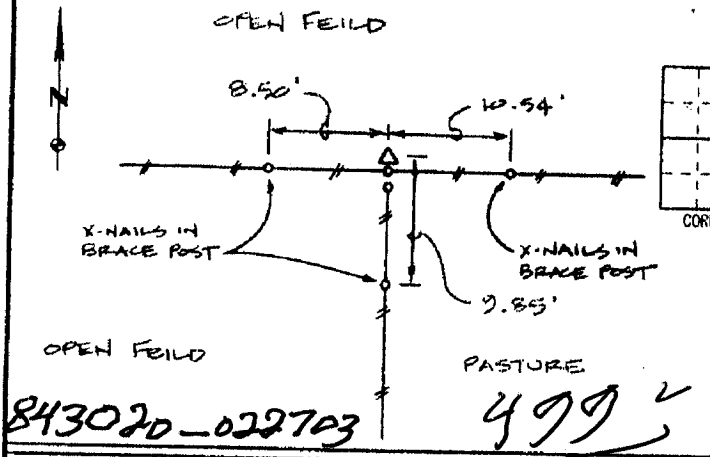
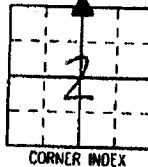
RECOVERY TIE DRAWING

MONUMENT DESCRIPTION AND REMARKS:



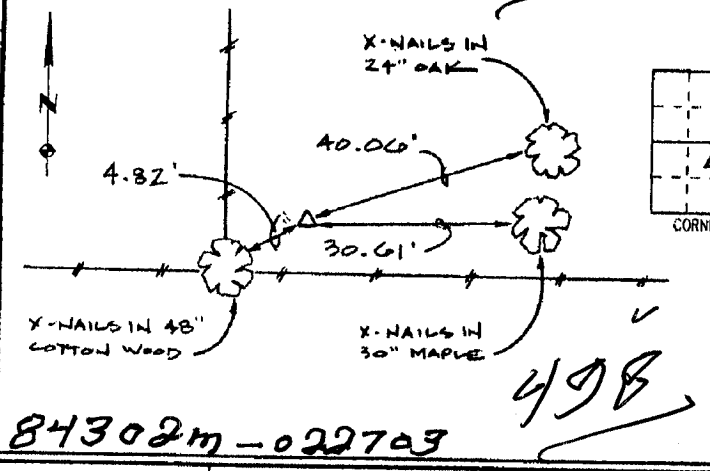
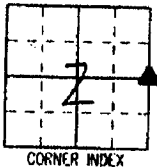
N1/4 COR. --1/4 --1/4, SEC. 2, T84N, R3W

REASON FOR PREPARING CERTIFICATE: A B, C OR D
PREVIOUS BOOK _____, PAGE _____
SET 1/2" REBAR WITH RED L.S. CAP
11954, 3" DEEP IN CENTERLINE
130TH STREET



E1/4 COR. --1/4 --1/4, SEC. 2, T84N, R3W

REASON FOR PREPARING CERTIFICATE: A B, C OR D
PREVIOUS BOOK _____, PAGE _____
SET 1/2" REBAR WITH RED L.S. CAP
11954, FLUSH WITH GROUND
AGAINST NORTH FACE OF CORNER POST



NE COR. NE1/4 SW1/4, SEC. 2, T84N, R3W

REASON FOR PREPARING CERTIFICATE: A B, C OR D
PREVIOUS BOOK _____, PAGE _____
FOUND 3/8" GAS PIPE 18" ABOVE GROUND
5' EAST OF NORTH-SOUTH FENCE AND 1'
NORTH OF EAST-WEST FENCE



I hereby certify that this land surveying document was prepared and the related survey work was performed by me or under my direct personal supervision and that I am a duly licensed Land Surveyor under the laws of the State of Iowa.

Signed: Daniel J. Johnson Date: 2-27-03
Daniel J. Johnson, L.S. 11954
My license renewal date is December 31, 2004

Pages or sheets covered by this seal: 1

REASON FOR PREPARING CERTIFICATE:

- A) THERE IS NO CERTIFICATE FOR THE CORNER ON FILE WITH THE RECORDER OF THE COUNTY IN WHICH THE CORNER IS LOCATED.
- B) CORNER POSITION DIFFERS FROM THAT SHOWN IN THE PUBLIC RECORDS OF THE COUNTY IN WHICH THE CORNER IS LOCATED.
- C) THE CORNER MONUMENT HAS BEEN REPLACED OR MODIFIED.
- D) THE REFERENCE TIES REFERRED TO IN AN EXISTING PUBLIC RECORD ARE INCORRECT OR MISSING.

Sheet Title: U.S. PUBLIC LAND SURVEY CORNER CERTIFICATE

Project Title: CHAD MACHART



HALL AND HALL ENGINEERS, INC.
209 29TH STREET N.E.
CEDAR RAPIDS, IOWA 52402
(319) 362-9548

Drawn by: DLK	Checked by: DJJ	Approved by: DJJ	Field Book No: 0137	Scale: NONE	Date: 2/12/03	Project No: 5596
------------------	--------------------	---------------------	------------------------	----------------	------------------	---------------------

H

1999 1804

FILED
RECORDERS OFFICE
JONES COUNTY IOWA

99 MAY 18 PM 3:48

MARIE KRUTZFIELD
RECORDER 6.00 pd

BRAIN ENGINEERING, INC., 777 10TH STREET, MARION, IOWA 52302 PH. (319) 373-1318

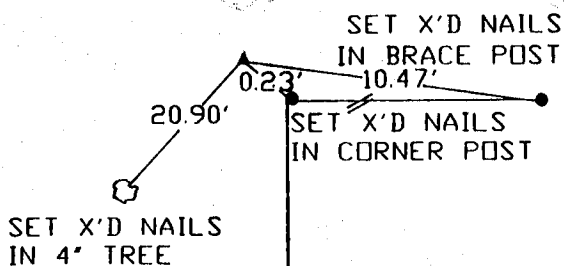
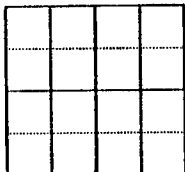
UNITED STATES PUBLIC LAND SURVEY CORNER CERTIFICATE

LAND SURVEY MONUMENTS SITUATED IN SECTION 02, TOWNSHIP 84 NORTH
RANGE 03 WEST OF THE 5TH P.M., JONES COUNTY, IOWA.

NO SCALE



S 1/4



PREVIOUSLY RECORDED IN BOOK _____ PAGE _____

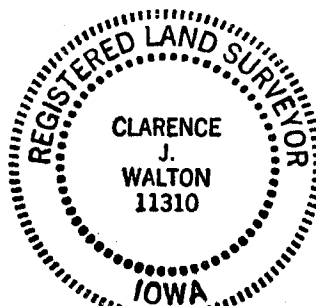
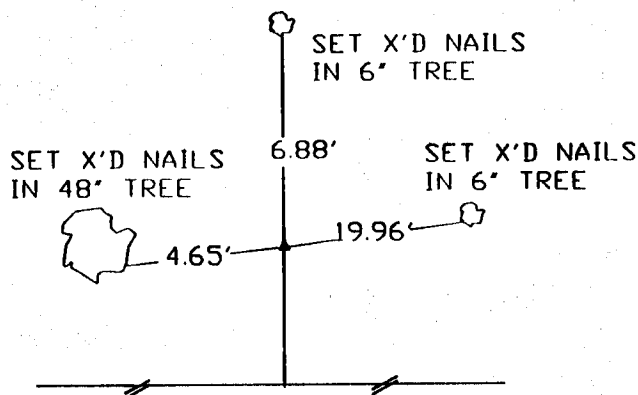
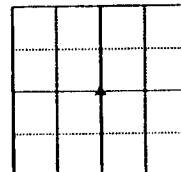
MONUMENT DESCRIPTION AND HOW ESTABLISHED _____

SET 1/2" REBAR WITH CAP #11310

NO SCALE



CENTER



PREVIOUSLY RECORDED IN BOOK _____ PAGE _____

MONUMENT DESCRIPTION AND HOW ESTABLISHED _____

FOUND 1" PIPE 2.5' ABOVE GROUND

I hereby declare that this plat, survey or report was made by me or under my direct personal supervision and that I am a duly registered Land Surveyor under the laws of the State of Iowa.

Signed Clarence J. Walton Date 5/14/99
Clarence J. Walton L.S. Iowa Reg No. 11310
My Registration Renewal Date Is December 31, 1999

CORNERS TO BE INDEXED

CORNER	SECTION	TOWNSHIP	RANGE
S 1/4	02	T84N	R3W
CENTER	02	T84N	R3W

BRAIN ENGINEERING, INC.

777 10TH STREET
MARION, IOWA 52302
(319) 373-1318

23979-10