

2004 1653

FILED
RECORDERS OFFICE
JONES COUNTY IOWA

04 MAY 13 AM 9:26

MARIE KRUTZFIELD
RECORDER NO Fee

M

J.D. TJEPKES, LS. JONES COUNTY ENGINEER'S OFFICE, 19501 HWY. 64, ANAMOSA, IOWA, 52205 (319)462-3785

UNITED STATES PUBLIC LAND SURVEY CORNER CERTIFICATE

LAND SURVEY MONUMENTS SITUATED IN SECTION 35, TOWNSHIP 85
NORTH, RANGE 3 WEST OF THE 5TH P.M., JONES COUNTY, IOWA

CORNERS TO BE INDEXED

CORNER	SECTION	TOWNSHIP	RANGE
S1/4	35	85N	3W

OFFICE FILE NO. 85335w_043004.tif

1507

PREVIOUSLY RECORDED IN BOOK NA, PAGE NA
MONUMENT DESCRIPTION AND HOW ESTABLISHED
PER PROPORTIONATE MEASUREMENT AND ON LINE BETWEEN FOUND
PIN AT N1/4 SECTION 2-84-3, AND FOUND PIN AT NW CORNER
SEC.2-84-3. SET 5/8"X24" REBAR W/CAP #14807 IN ROADBED,
BURIED 4". S1/4 SECTION 35 T85N R3W. TIES AS INDICATED.

CORNERS TO BE INDEXED

CORNER	SECTION	TOWNSHIP	RANGE
SE	35	85N	3W

OFFICE FILE NO. 85335y_043004.tif

1508

PREVIOUSLY RECORDED IN BOOK NA, PAGE NA
MONUMENT DESCRIPTION AND HOW ESTABLISHED
PER PROPORTIONATE DISTANCE AND ON LINE WITH FOUND PIN AT
NE COR SEC 2-84-3, AND FOUND PIN AT N1/4 SEC 2-84-3.
SET 5/8" X 24" REBAR W/CAP #14807, SE COR SEC 35 T85N
R3W, BURIED 4" IN ROADBED. TIED AS INDICATED.

CORNERS TO BE INDEXED

CORNER	SECTION	TOWNSHIP	RANGE

OFFICE FILE NO. _____

PREVIOUSLY RECORDED IN BOOK _____, PAGE _____
MONUMENT DESCRIPTION AND HOW ESTABLISHED _____

CORNERS TO BE INDEXED

CORNER	SECTION	TOWNSHIP	RANGE

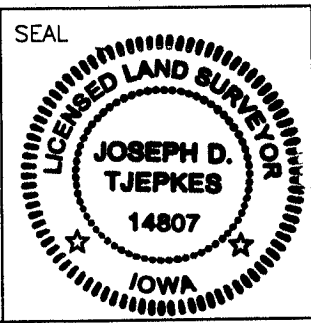
OFFICE FILE NO. _____

PREVIOUSLY RECORDED IN BOOK _____, PAGE _____
MONUMENT DESCRIPTION AND HOW ESTABLISHED _____

I hereby declare that this plat, survey or report was made by me or under my direct personal supervision and that I am a duly registered Land Surveyor under the laws of the State of Iowa.

Signed: [Signature] 5-13-04

Joseph D. Tjepkes L.S. Iowa Reg. No. 14807
My Registration Renewal Date is December 31, 2004



J.D. TJEPKES LS 14807
JONES COUNTY
ENGINEER'S OFFICE

19501 HWY. 64,
ANAMOSA, IOWA,
52205 (319)462-3785

Joe K

PREPARED BY HALL & HALL ENGINEERS, INC. 209 29TH STREET N.E. CEDAR RAPIDS, IOWA 52402 (319) 362-9548

SECTION CORNER CERTIFICATE

OF

LAND SURVEY MONUMENTS SITUATED IN SECTION 2, TOWNSHIP 84 NORTH, RANGE 3 WEST, OF THE FIFTH PRINCIPAL MERIDIAN, JONES COUNTY, IOWA

PREVIOUSLY RECORDED IN BOOK AT PAGE

REASON FOR PREPARING CERTIFICATE:

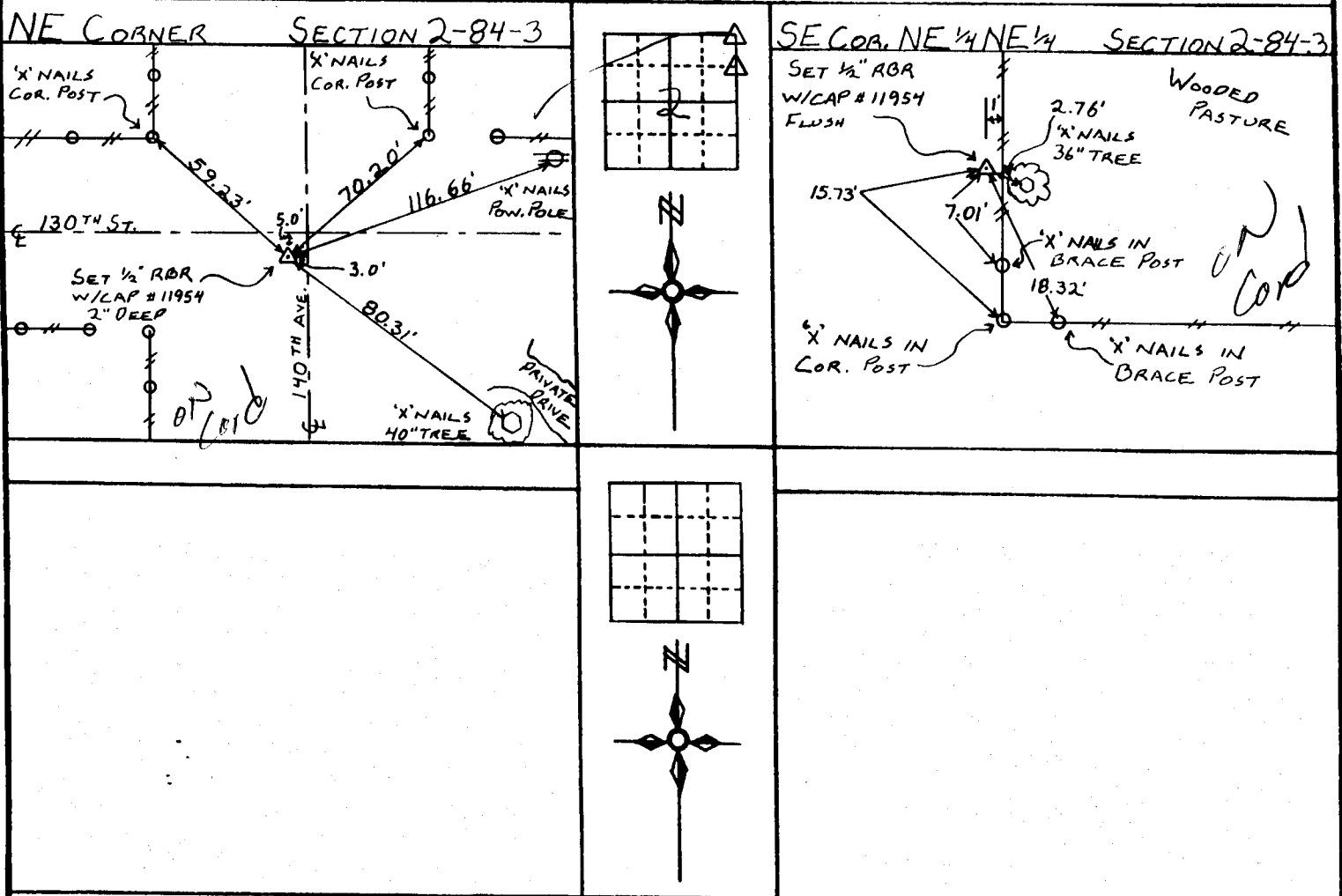
- A) THERE IS NO CERTIFICATE FOR THE CORNER ON FILE WITH THE RECORDER OF THE COUNTY IN WHICH THE CORNER IS LOCATED.
- B) CORNER POSITION DIFFERS FROM THAT SHOWN IN THE PUBLIC RECORDS OF THE COUNTY IN WHICH THE CORNER IS LOCATED.
- C) THE CORNER MONUMENT HAS BEEN REPLACED OR MODIFIED
- D) THE REFERENCE TIES REFERRED TO IN AN EXISTING PUBLIC RECORD ARE INCORRECT

MONUMENT DESCRIPTION AND REMARKS:

NE COR. SEC. 2-84-3: SET 1/2" REBAR W/CAP #11954 2" DEEP, 5' SOUTH OF E 130TH ST. & 3' WEST OF E 140TH AVE.

SEC. COR. NE 1/4 NE 1/4 SEC. 2-84-3: SET 1/2" REBAR W/CAP #11954 FLUSH W/GROUND, 1' WEST OF N-S FENCE LINE.

RECOVERY TIE DRAWING



I, DANIEL J. JOHNSON, - CERTIFY THAT THE CORNER LOCATION(S) SHOWN ON THIS RECORD WERE DETERMINED BY ME OR UNDER MY DIRECTION AND CONTROL AND THAT THIS U.S. PUBLIC LAND SURVEY MONUMENT RECORD IS CORRECT AND COMPLETE TO THE BEST OF MY KNOWLEDGE AND BELIEF.

Daniel J. Johnson 12-19-96
DANIEL J. JOHNSON L.S. NO. 11954 DATE



MY LICENSE RENEWAL DATE IS DECEMBER 31, 1998

LEGAL VERIFICATION	<input type="checkbox"/> GOVERNMENT CORNER <input checked="" type="checkbox"/> PROPERTY CORNER FOUND <input type="checkbox"/> 1/2" x 30" W/ L.S. CAP SET <input type="checkbox"/> EXISTING FENCE LINE <input type="checkbox"/> PROPERTY LINE	SHEET TITLE: U.S. PUBLIC LAND SURVEY RECORD PROJECT TITLE: WARD ACRES - BOUNDARY		HALL AND HALL ENGINEERS, INC. 209 29TH STREET N.E. CEDAR RAPIDS, IOWA 52402 (319) 362-9548
	DATED: JSR CHECKED: JWP APPROVED: APPR	DATE: 4/6/94 SCATTER: NONE		