

2002 2523

FILED  
RECORDERS OFFICE  
JONES COUNTY IOWA

2002 JL 11 AM 9:07

MARIE KRUTZFIELD  
RECORDER NO FEE

J.D. Tjepkes, LS. JONES COUNTY ENGINEER'S OFFICE, 19501 HWY. 64, ANAMOSA, IOWA, 52205 (319)462-3785

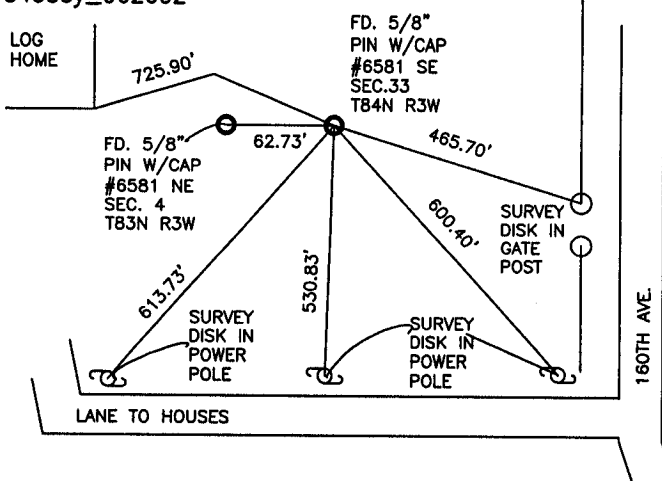
# UNITED STATES PUBLIC LAND SURVEY CORNER CERTIFICATE

LAND SURVEY MONUMENTS SITUATED IN SECTION 33, TOWNSHIP 84  
NORTH, RANGE 3 WEST OF THE 5TH P.M., JONES COUNTY, IOWA

### CORNERS TO BE INDEXED

CORNER SECTION TOWNSHIP RANGE  
SE 33 84N 3W

OFFICE FILE NO. 84333y\_062602

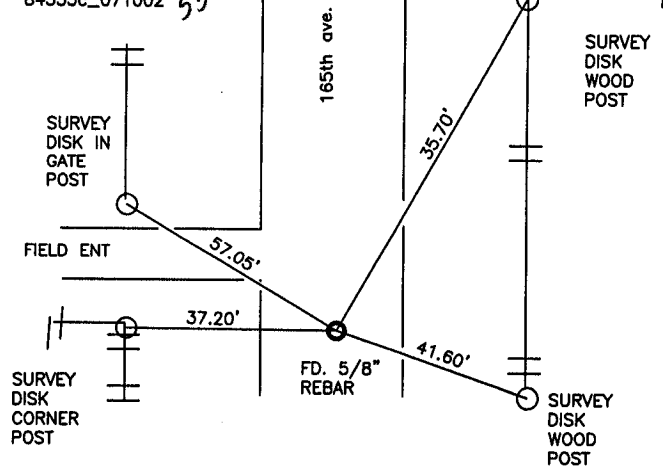
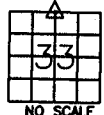


PREVIOUSLY RECORDED IN BOOK NA, PAGE NA  
MONUMENT DESCRIPTION AND HOW ESTABLISHED \_\_\_\_\_  
FROM TIES RECORDED IN JONES CO. ENGINEER'S OFFICE FD. 5/8" IRON  
PIN W/CAP #6581 BURIED IN FIELD. RETIED AS INDICATED. FIELD WORK  
COMPLETED 5-14-02  
FIELD BK. #361 P. 7

### CORNERS TO BE INDEXED

CORNER SECTION TOWNSHIP RANGE  
N1/4 33 84N 3W

OFFICE FILE NO. 84333c\_071002

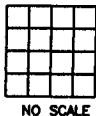


PREVIOUSLY RECORDED IN BOOK NA, PAGE NA  
MONUMENT DESCRIPTION AND HOW ESTABLISHED \_\_\_\_\_  
FROM TIES RECORDED IN JONES CO. ENGINEER'S OFFICE FD. 5/8" IRON  
PIN W/ LS CAP #6581 IN ROAD. RETIED AS INDICATED. FIELD WORK  
COMPLETED 5-1-02  
FIELD NOTES BK. #361 P. 5

### CORNERS TO BE INDEXED

CORNER SECTION TOWNSHIP RANGE

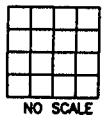
OFFICE FILE NO. \_\_\_\_\_



### CORNERS TO BE INDEXED

CORNER SECTION TOWNSHIP RANGE

OFFICE FILE NO. \_\_\_\_\_



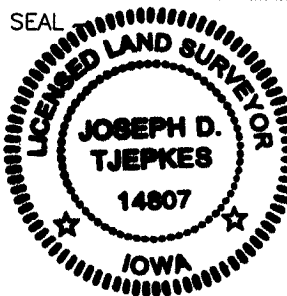
PREVIOUSLY RECORDED IN BOOK \_\_\_\_\_, PAGE \_\_\_\_\_  
MONUMENT DESCRIPTION AND HOW ESTABLISHED \_\_\_\_\_

PREVIOUSLY RECORDED IN BOOK \_\_\_\_\_, PAGE \_\_\_\_\_  
MONUMENT DESCRIPTION AND HOW ESTABLISHED \_\_\_\_\_

I hereby declare that this plat, survey or report was made by me or under my direct personal supervision and that I am a duly registered Land Surveyor under the laws of the State of Iowa.

Signed: \_\_\_\_\_

*Joseph D. Tjepkes* 7.10.02  
Joseph D. Tjepkes L.S. Iowa Reg. No. 14807  
My Registration Renewal Date is December 31, 2002



J.D. Tjepkes LS 14807  
JONES COUNTY  
ENGINEER'S OFFICE

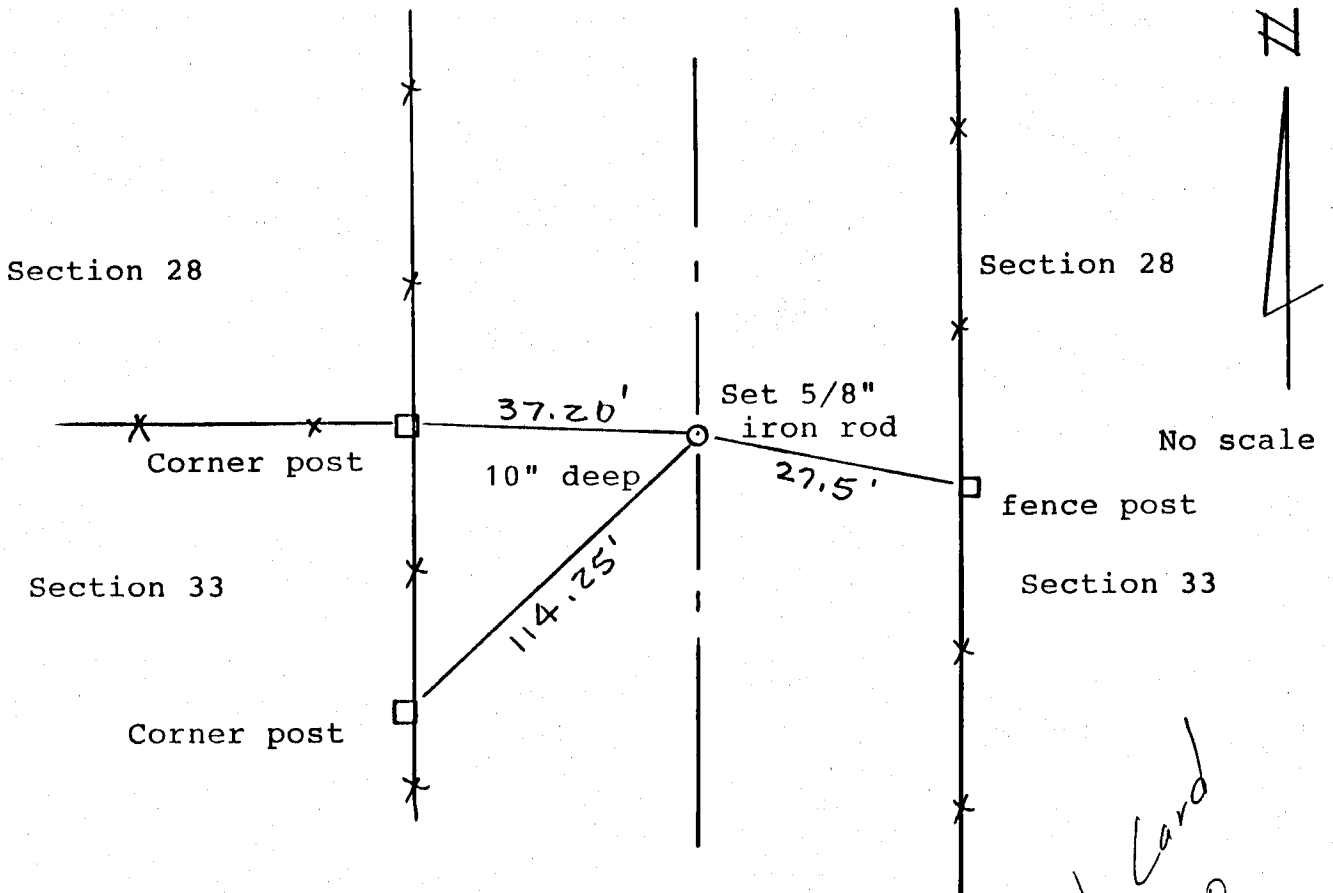
19501 HWY. 64,  
ANAMOSA, IOWA,  
52205 (319)462-3785

LAND CORNER SURVEY CERTIFICATE

Jackson  
~~Sec. 33~~  
NW Sec. 33

QUARTER CORNER COMMON TO SECTIONS 33 AND 28 TOWNSHIP 84 NORTH,  
RANGE 3 WEST, JONES COUNTY, IOWA.

FILED



ON Card  
8-17-90  
P.P.

Retraced from recorded surveys.

Reason for filing: Initial filing

CERTIFICATION

I hereby certify that this plat and survey was made by me or under my direct personal supervision and that I am a duly Registered Land Surveyor under the laws of the State of Iowa.

Harold E. Dillon  
Harold E. Dillon Reg# 6581 7/27/90

