

2002 2547

FILED
RECORDERS OFFICE
JONES COUNTY IOWA

2002 JL 12 AM 9:10

MARIE KRUTZFIELD
RECORDER NO FEE

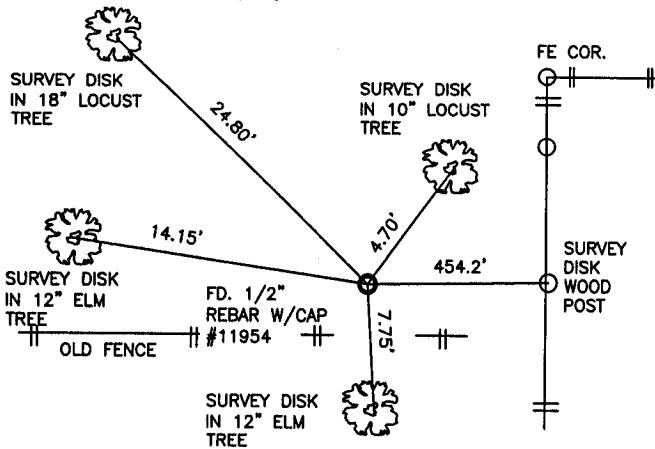
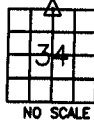
J.D. Tjepkes, LS. JONES COUNTY ENGINEER'S OFFICE, 19501 HWY. 64, ANAMOSA, IOWA, 52205 (319)462-3785

UNITED STATES PUBLIC LAND SURVEY CORNER CERTIFICATE

LAND SURVEY MONUMENTS SITUATED IN SECTION 34, TOWNSHIP 84
NORTH, RANGE 3 WEST OF THE 5TH P.M., JONES COUNTY, IOWA

CORNERS TO BE INDEXED

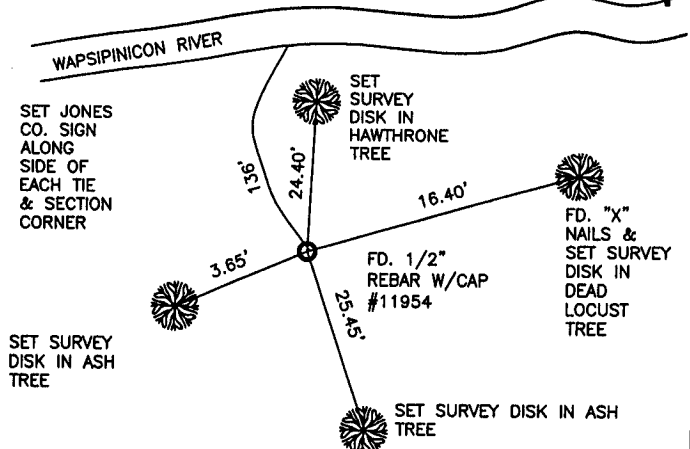
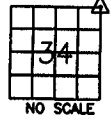
CORNER SECTION TOWNSHIP RANGE
N1/4 34 84N 3W
OFFICE FILE NO.
84334c_071102 529



PREVIOUSLY RECORDED IN BOOK 1999, PAGE 3191
MONUMENT DESCRIPTION AND HOW ESTABLISHED
FD. 1/2" REBAR W/CAP #11954(D.JOHNSON) FROM RECORDED TIES.
RESET SURVEY DISKS AT "X" NAILS LOCATION AND SET JONES CO. SIGN
ALONG SIDE OF PIN. RETIED AS INDICATED.
FIELD BK.#361 P.7 FIELD WORK COMPLETED 5-15-02

CORNERS TO BE INDEXED

CORNER SECTION TOWNSHIP RANGE
NE 34 84N 3W
OFFICE FILE NO.
84334e_071102 529



PREVIOUSLY RECORDED IN BOOK NA, PAGE NA
MONUMENT DESCRIPTION AND HOW ESTABLISHED
FD. 1/2" REBAR W/CAP #11954(JOHNSON) FROM TIES IN JONES CO.
ENGINEERS OFFICE. RETIED AS INDICATED.
FIELD WORK COMPLETED 5-14-02
FIELD BK. #361 P.8

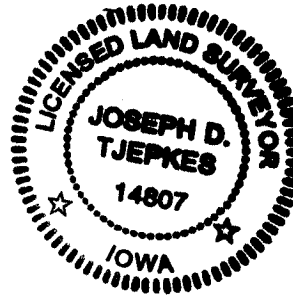
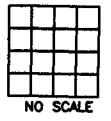
CORNERS TO BE INDEXED

CORNER SECTION TOWNSHIP RANGE
OFFICE FILE NO.



CORNERS TO BE INDEXED

CORNER SECTION TOWNSHIP RANGE
OFFICE FILE NO.



PREVIOUSLY RECORDED IN BOOK _____, PAGE _____
MONUMENT DESCRIPTION AND HOW ESTABLISHED _____

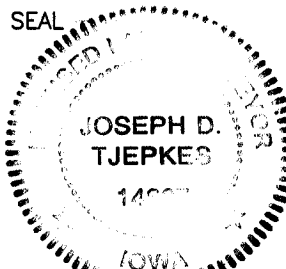
PREVIOUSLY RECORDED IN BOOK _____, PAGE _____
MONUMENT DESCRIPTION AND HOW ESTABLISHED _____

I hereby declare that this plat, survey or report was made by me or under my direct personal supervision and that I am a duly registered Land Surveyor under the laws of the State of Iowa.

Signed:

Joseph D. Tjepkes 7-11-02

Joseph D. Tjepkes L.S. Iowa Reg. No. 14807
My Registration Renewal Date is December 31, 2002



J.D. Tjepkes LS 14807
JONES COUNTY
ENGINEER'S OFFICE

19501 HWY. 64,
ANAMOSA, IOWA,
52205 (319)462-3785

SECTION CORNER CERTIFICATE

OF
 LAND SURVEY MONUMENTS SITUATED IN SECTION 26, TOWNSHIP 84 NORTH,
 RANGE 3 WEST, OF THE FIFTH PRINCIPAL MERIDIAN, JONES, COUNTY, IOWA.

PREVIOUSLY RECORDED IN BOOK _____ AT PAGE _____ .

FOR RECORDER'S USE

REASON FOR PREPARING CERTIFICATE:

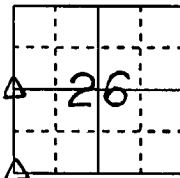
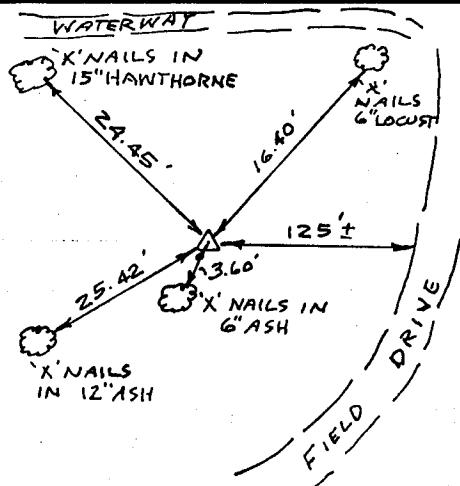
- A) THERE IS NO CERTIFICATE FOR THE CORNER ON FILE WITH THE RECORDER OF THE COUNTY IN WHICH THE CORNER IS LOCATED.
- B) CORNER POSITION DIFFERS FROM THAT SHOWN IN THE PUBLIC RECORDS OF THE COUNTY IN WHICH THE CORNER IS LOCATED.
- C) THE CORNER MONUMENT HAS BEEN REPLACED OR MODIFIED.
- D) THE REFERENCE TIES REFERRED TO IN AN EXISTING PUBLIC RECORD ARE INCORRECT.

MONUMENT DESCRIPTION AND REMARKS :

SW COR. 26-84-3, SET 1/2" REBAR WITH CAP # 11954
 W 1/4 COR. 26-84-3, SET 1/2" REBAR WITH CAP # 11954, 2' WEST OF FENCE

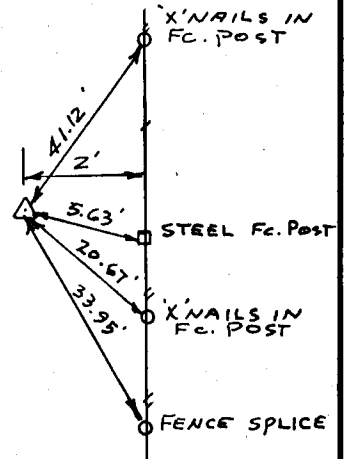
RECOVERY TIE DRAWING

SW COR. 26-84-3



NOT TO SCALE

W 1/4 COR. 26-84-3

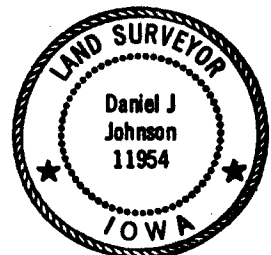


9-24-93 M.S.

1-27-93 M.S.

I, Daniel J. Johnson CERTIFY THAT THE CORNER LOCATION(S) SHOWN ON THIS RECORD WERE DETERMINED BY ME OR UNDER MY DIRECTION AND CONTROL AND THAT THIS U.S. PUBLIC LAND SURVEY MONUMENT RECORD IS CORRECT AND COMPLETE TO THE BEST OF MY KNOWLEDGE AND BELIEF.

Daniel J. Johnson 4-16-93
 DANIEL J. JOHNSON L.S. NO 11954 DATE



MONUMENT
 △ GOVERNMENT CORNER
 ○ 5/8" TIE PIN SET
 --- CENTERLINE
 -X- EXISTING FENCE LINE
 - - - R.O.W. LINE

SHEET TITLE: U.S. PUBLIC LAND SURVEY RECORD
 PROJECT TITLE: JAN GLENN SURVEY

HALL AND HALL ENGINEERS, INC.
 226 29TH STREET DRIVE S.E.
 CEDAR RAPIDS, IOWA 52403
 319-362-9548

DWN DWS.	CIC	APP	DATE 3-2-93	SCALE NONE	FNO B	PNO PROJ 4841
----------	-----	-----	-------------	------------	-------	---------------