

Jones County Marie Krutzfield Recorder
 Fee Book 2012 2940
 10/09/2012 @1143AM # Pages 1
 ZSC SEC COR CERT
 Total Fees: \$0.00

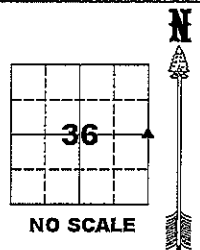
COPY

PREPARED BY
 CLARENCE J. WALTON, JONES COUNTY ENGINEER'S OFFICE, 19501 HWY. 64, ANAMOSA, IOWA, 52205 (319) 462-3785

UNITED STATES PUBLIC LAND
 SURVEY CORNER CERTIFICATE
 LAND SURVEY MONUMENTS SITUATED IN SECTION 36, TOWNSHIP 84 NORTH,
 RANGE 3 WEST OF THE 5TH PRINCIPAL MERIDIAN, JONES COUNTY, IOWA.

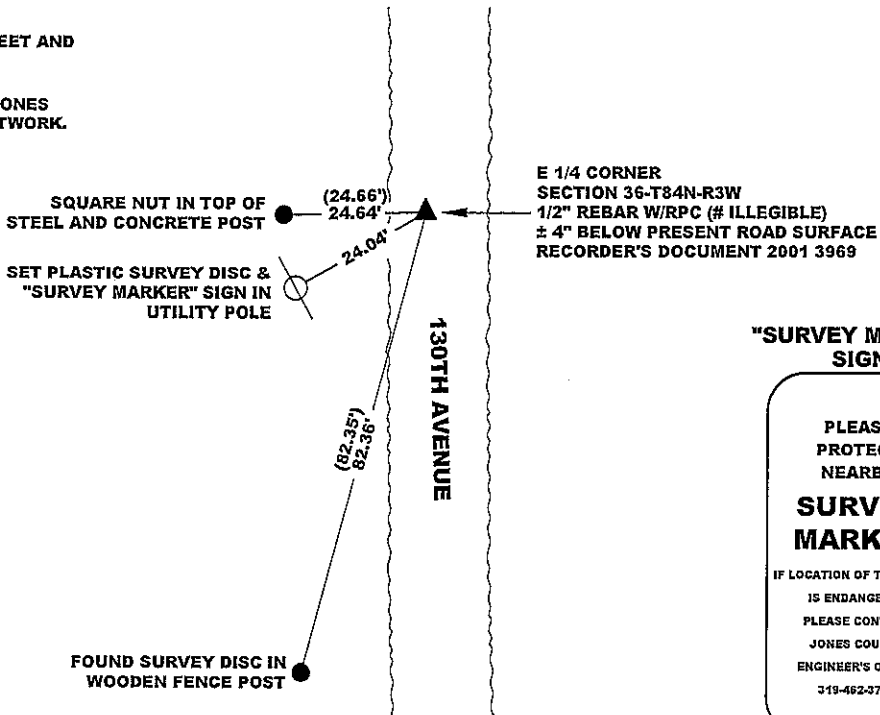
NE CORNER SECTION 18-T85N-R3W
 STATE PLANE COORDINATE (NAD 83 IOWA NORTH)
 N 3487030.52
 E 5564484.32

CORNER SECTION TOWNSHIP RANGE
 E 1/4 36 T84N R3W



NOTES:

- 1) THE STATE PLANE COORDINATES AS SHOWN ARE FOR CONVENIENCE ONLY. THE TIES AS SHOWN SHOULD BE USED TO REPLACE THE CORNER, IF DESTROYED.
- 2) COORDINATES AS SHOWN ARE GRID COORDINATES AND BASED ON JONES COUNTY G.P.S. CONTROL NETWORK WHICH IN TURN IS BASED ON NAD 83 IOWA NORTH DATUM.
- 3) ALL MEASUREMENTS ARE IN FEET AND DECIMALS THEREOF.
- 4) * GRID DISTANCE, BASED ON JONES COUNTY G.P.S. CONTROL NETWORK.



SURVEY DISC

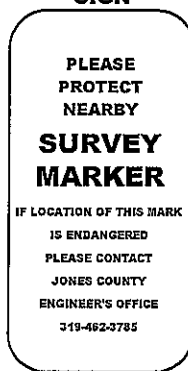


LEGEND

- YPC YELLOW PLASTIC CAP
- OPC ORANGE PLASTIC CAP
- RPC RED PLASTIC CAP
- BPC BLUE PLASTIC CAP
- () RECORDED AS

FOUND SURVEY DISC IN WOODEN FENCE POST

"SURVEY MARKER" SIGN



PAGE 1 of 1

PREVIOUSLY RECORDED IN RECORDER'S DOCUMENT 2001 3969

MONUMENT DESCRIPTION AND HOW ESTABLISHED FOUND 1/2" REBAR ± 4" BELOW PRESENT ROAD SURFACE IN ROAD BED AS PER ABOVE REFERENCED CORNER CERTIFICATE. THE REASON FOR FILING THIS CERTIFICATE WAS TO PROVIDE STATE PLANE COORDINATES TO THIS CORNER AND TO ADD ONE ADDITIONAL TIE THAT IS CONVENIENT AND IS LIKELY TO SURVIVE FOR A FAIR AMOUNT OF TIME.

FIELD BOOK: 381, PAGE 72; DATA COLLECTOR DATE OF SURVEY: 10/2/12



I hereby certify that this land surveying document and the related survey work was performed by me or under my direct personal supervision and that I am a duly registered Land Surveyor under the laws of the State of Iowa.
 Signed: *Clarence J. Walton* 10/9/12
 Clarence J. Walton, L.S.
 My Registration Renewal Date is December 31, 2013
 Iowa License Number 11310
 Pages or sheets covered by this seal: 1 of 1

- A. THERE IS NO CERTIFICATE FOR THE CORNER ON FILE WITH THE RECORDER OF THE COUNTY IN WHICH THE CORNER IS LOCATED.
- B. THE CORNER MONUMENT HAS BEEN REPLACED OR MODIFIED.
- C. THE SURVEYOR IN RESPONSIBLE CHARGE OF THE LAND SURVEYING ACCEPTS A CORNER POSITION THAT DIFFERS FROM THAT SHOWN IN THE PUBLIC RECORDS OF THE COUNTY IN WHICH THE CORNER IS LOCATED.
- D. THE REFERENCE TIES REFERRED TO IN AN EXISTING PUBLIC RECORD NO LONGER EXIST.
- E. ADDED ADDITIONAL INFORMATION TO EXISTING TIES.

CORNERS TO BE INDEXED

CORNER	SECTION	TOWNSHIP	RANGE
E 1/4	36	84N	3W
W 1/4	31	83N	3W

JONES COUNTY ENGINEER'S OFFICE



19501 HWY. 64, ANAMOSA, IOWA 52205
 (319) 462-3785

2001 3969

FILED
RECORDERS OFFICE
JONES COUNTY IOWA

843360-11201

ID # 534

01 NOV 16 AM 11:52

MARIE KRUTZFIELD
RECORDER No Fee

J.D. TJEPKES, LS. JONES COUNTY ENGINEER'S OFFICE, 19501 HWY. 64, ANAMOSA, IOWA, 52205 (319)462-3785

UNITED STATES PUBLIC LAND SURVEY CORNER CERTIFICATE

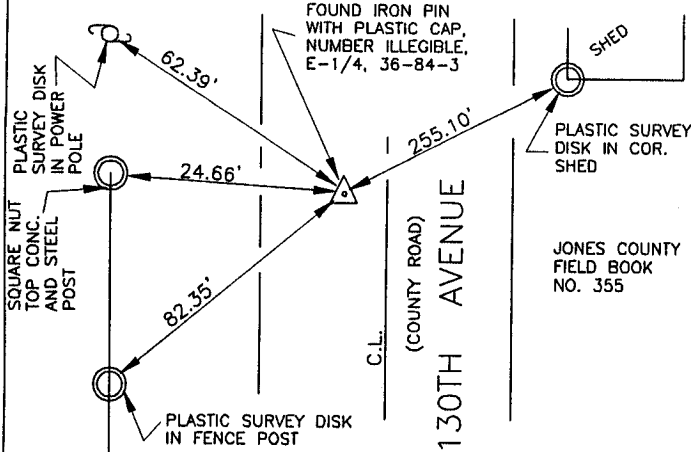
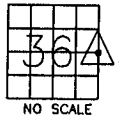
LAND SURVEY MONUMENTS SITUATED IN SECTION 36, TOWNSHIP 84
NORTH, RANGE 3 WEST OF THE 5TH P.M., JONES COUNTY, IOWA

CORNERS TO BE INDEXED

CORNER SECTION TOWNSHIP RANGE
E-1/4 36 84N 3W

OFFICE FILE NO.

843360_092401

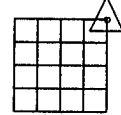


PREVIOUSLY RECORDED IN BOOK 426, PAGE 26
FOUND IRON PIN WITH CAP IN COUNTY ROAD (NUMBER ILLEGIBLE), EAST QUARTER SECTION 36, T84N, R3W, 5TH P.M., JONES COUNTY IOWA, SET REFERENCE POINTS AND TIED OUT AS INDICATED.

CORNERS TO BE INDEXED

CORNER SECTION TOWNSHIP RANGE

OFFICE FILE NO.

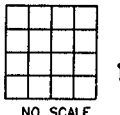


PREVIOUSLY RECORDED IN BOOK _____, PAGE _____
MONUMENT DESCRIPTION AND HOW ESTABLISHED _____

CORNERS TO BE INDEXED

CORNER SECTION TOWNSHIP RANGE

OFFICE FILE NO.

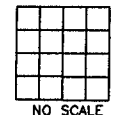


PREVIOUSLY RECORDED IN BOOK _____, PAGE _____
MONUMENT DESCRIPTION AND HOW ESTABLISHED _____

CORNERS TO BE INDEXED

CORNER SECTION TOWNSHIP RANGE

OFFICE FILE NO.

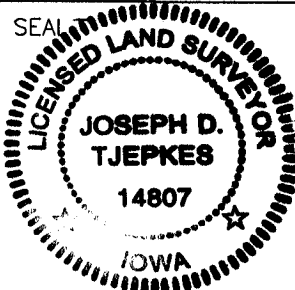


PREVIOUSLY RECORDED IN BOOK _____, PAGE _____
MONUMENT DESCRIPTION AND HOW ESTABLISHED _____

I hereby declare that this plat, survey or report was made by me or under my direct personal supervision and that I am a duly registered Land Surveyor under the laws of the State of Iowa.

Signed: *[Signature]* 11-12-01

Joseph D. Tjepkes L.S. Iowa Reg. No. 14807
My Registration Renewal Date is December 31, 2002



J.D. TJEPKES LS 14807
JONES COUNTY
ENGINEER'S OFFICE

19501 HWY. 64,
ANAMOSA, IOWA,
52205 (319)462-3785

UNITED STATES PUBLIC LAND SURVEY CORNER CERTIFICATE

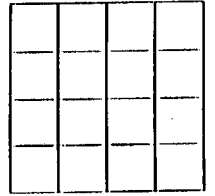
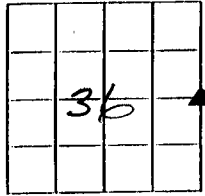
LAND SURVEY MONUMENTS SITUATED IN SECTION 36, TOWNSHIP 84 NORTH
RANGE 3 WEST OF THE 5TH P.M., JONES COUNTY, IOWA.

NO SCALE

NO SCALE



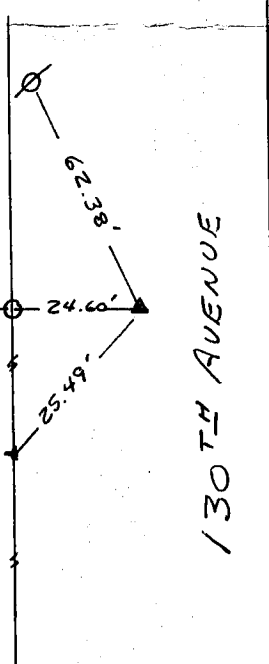
E 1/4 CORNER



SET 1/2" NAILS
IN POWER
POLE

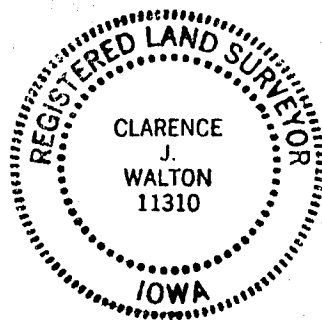
FOUND BOLTON
TOP OF STEEL
POST

STEEL
FENCE POST



130TH AVENUE

Copy
5-2-97



PREVIOUSLY RECORDED IN BOOK _____ PAGE _____

MONUMENT DESCRIPTION AND HOW ESTABLISHED _____

SET 1/2" REBAR w/cap # 11310 USING JONES
COUNTY ENGINEER'S TIES

PREVIOUSLY RECORDED IN BOOK _____ PAGE _____

MONUMENT DESCRIPTION AND HOW ESTABLISHED _____

I hereby declare that this plat, survey or report was made by me or under my direct personal supervision and that I am a duly registered Land Surveyor under the laws of the State of Iowa.

Signed Clarence J. Walton Date 3/27/97

Clarence J. Walton L.S. Iowa Reg No. 11310
My Registration Renewal Date Is December 31, 1997

CORNERS TO BE INDEXED

CORNER	SECTION	TOWNSHIP	RANGE
<u>E 1/4</u>	<u>36</u>	<u>84N</u>	<u>3W</u>

BRAIN ENGINEERING, INC.

777 10TH STREET
MARION, IOWA 52302
(319) 373-1318