

COPY

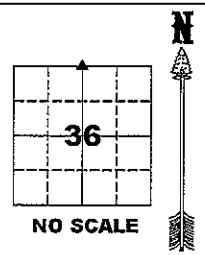
Jones County Marie Krutzfield Recorder
 Fee Book 2012 2939
 10/09/2012 @1142AM # Pages 1
 ZSC SEC COR CERT
 Total Fees: \$0.00

PREPARED BY
 CLARENCE J. WALTON, JONES COUNTY ENGINEER'S OFFICE, 19501 HWY. 64, ANAMOSA, IOWA, 52205 (319) 462-3785

UNITED STATES PUBLIC LAND
 SURVEY CORNER CERTIFICATE
 LAND SURVEY MONUMENTS SITUATED IN SECTION 36, TOWNSHIP 84 NORTH,
 RANGE 3 WEST OF THE 5TH PRINCIPAL MERIDIAN, JONES COUNTY, IOWA.

NE CORNER SECTION 18-T85N-R3W
 STATE PLANE COORDINATE (NAD 83 IOWA NORTH)
 N: 3489652.25
 E: 5561727.39

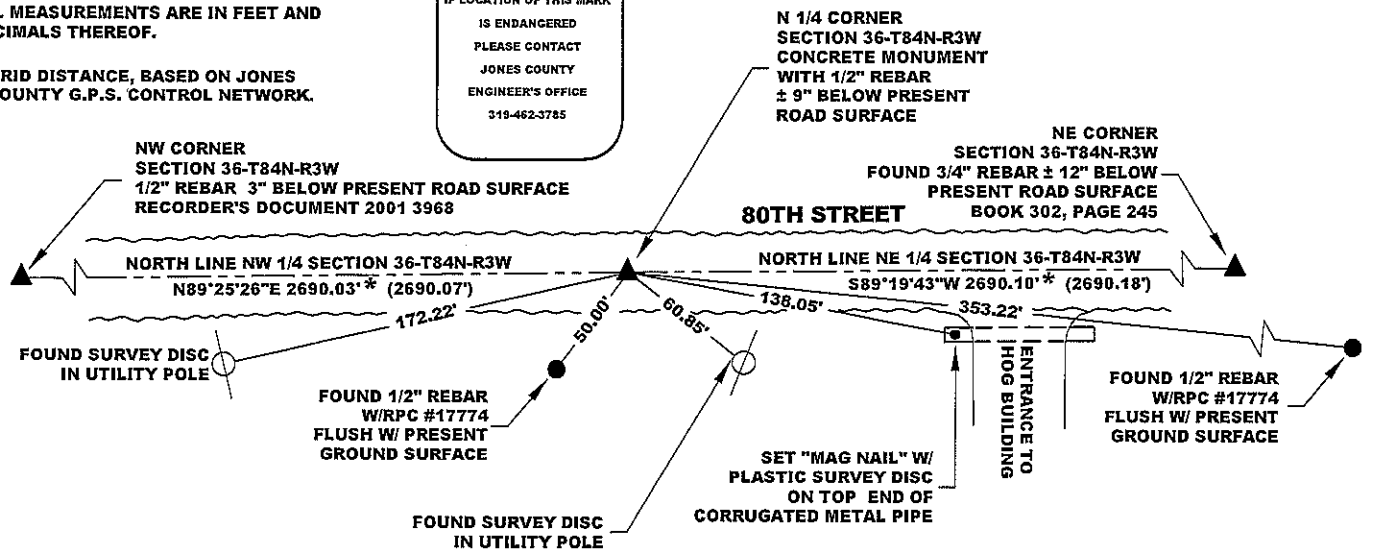
CORNER SECTION TOWNSHIP RANGE
 N 1/4 36 T84N R3W



NOTES:

- 1) THE STATE PLANE COORDINATES AS SHOWN ARE FOR CONVENIENCE ONLY. THE TIES AS SHOWN SHOULD BE USED TO REPLACE THE CORNER, IF DESTROYED.
- 2) COORDINATES AS SHOWN ARE GRID COORDINATES AND BASED ON JONES COUNTY G.P.S. CONTROL NETWORK WHICH IN TURN IS BASED ON NAD 83 IOWA NORTH DATUM.
- 3) ALL MEASUREMENTS ARE IN FEET AND DECIMALS THEREOF.
- 4) * GRID DISTANCE, BASED ON JONES COUNTY G.P.S. CONTROL NETWORK.

"SURVEY MARKER" SIGN



LEGEND

- YPC YELLOW PLASTIC CAP
- OPC ORANGE PLASTIC CAP
- RPC RED PLASTIC CAP
- BPC BLUE PLASTIC CAP
- () RECORDED AS

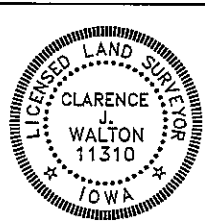
SURVEY DISC



PAGE 1 of 1

PREVIOUSLY RECORDED IN RECORDER'S DOCUMENT RECORDER'S DOCUMENT 1999 0331 AND BOOK 426, PAGE 24
 MONUMENT DESCRIPTION AND HOW ESTABLISHED FOUND 1/2" REBAR ± 9" BELOW PRESENT ROAD SURFACE IN CENTERLINE OF ROAD BED AS PER ABOVE REFERENCED CORNER CERTIFICATES. THE REASON FOR FILING THIS CERTIFICATE IS TO PROVIDE STATE PLANE COORDINATES TO THIS CORNER. ROAD FENCES HAVE BEEN REMOVED SO PREVIOUSLY REFERENCED TIES ARE GONE.

FIELD BOOK: NONE, DATA COLLECTOR DATE OF SURVEY: 9/18/12



I hereby certify that this land surveying document and the related survey work was performed by me or under my direct personal supervision and that I am a duly registered Land Surveyor under the laws of the State of Iowa.
 Signed: *Clarence J. Walton* 10/9/12
 Clarence J. Walton, L.S.
 My Registration Renewal Date is December 31, 2013
 Iowa License Number 11310
 Pages or sheets covered by this seal: 1 of 1

- A. THERE IS NO CERTIFICATE FOR THE CORNER ON FILE WITH THE RECORDER OF THE COUNTY IN WHICH THE CORNER IS LOCATED.
- B. THE CORNER MONUMENT HAS BEEN REPLACED OR MODIFIED.
- C. THE SURVEYOR IN RESPONSIBLE CHARGE OF THE LAND SURVEYING ACCEPTS A CORNER POSITION THAT DIFFERS FROM THAT SHOWN IN THE PUBLIC RECORDS OF THE COUNTY IN WHICH THE CORNER IS LOCATED.
- D. THE REFERENCE TIES REFERRED TO IN AN EXISTING PUBLIC RECORD NO LONGER EXIST.
- E. ADDED ADDITIONAL INFORMATION TO EXISTING TIES.

CORNERS TO BE INDEXED

CORNER	SECTION	TOWNSHIP	RANGE
N 1/4	36	84N	3W
S 1/4	25	84N	3W

JONES COUNTY ENGINEER'S OFFICE



19501 HWY. 64, ANAMOSA, IOWA 52205
 (319) 462-3785

UNITED STATES PUBLIC LAND SURVEY CORNER CERTIFICATE
OF

LAND SURVEY MONUMENTS SITUATED IN SECTION 25, TOWNSHIP 84, RANGE 3W, OF THE 5TH PRINCIPAL MERIDIAN JONES COUNTY IOWA.

PREVIOUSLY RECORDED IN DOES NOT APPLY IN COUNTY RECORDER'S OFFICE.
(BOOK, PAGE, DOCUMENT NUMBER, ETC.)

(SHOW REASON FOR PREPARING THIS CERTIFICATE, THE EVIDENCE AND DETAILED PROCEDURES USED IN ESTABLISHING THE CORNER POSITIONS AND MONUMENTATION FOUND OR PLACED.)

MONUMENT DESCRIPTION AND REMARKS: RE-REFERENCED CORNERS FOR R.O.W. ACQUISITIONS

PLAN - VIEW

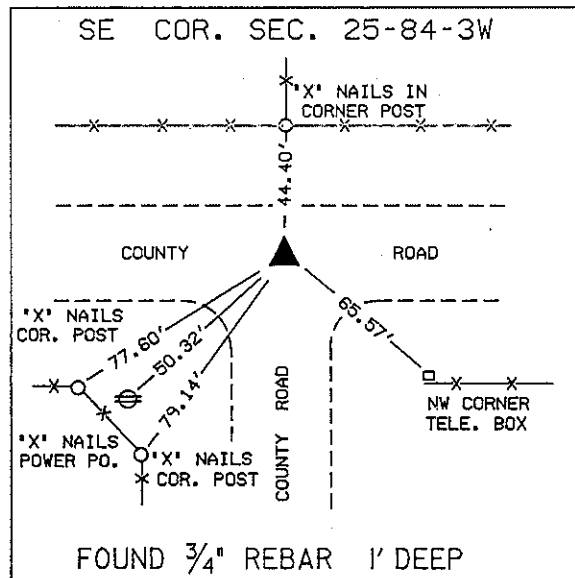
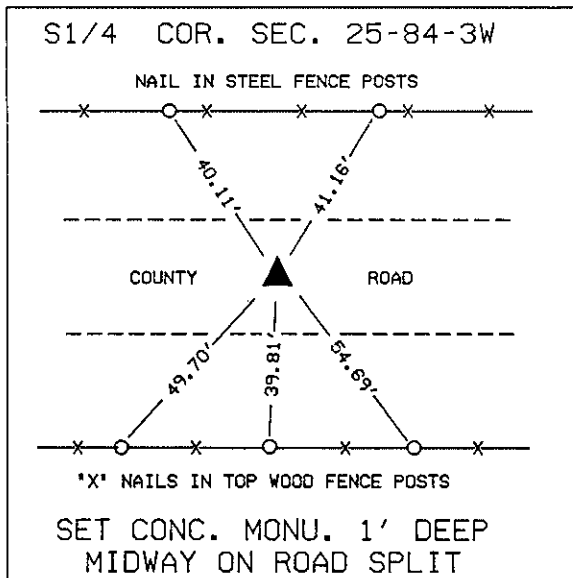
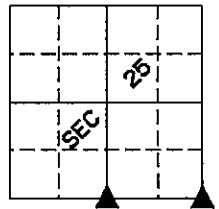
(SHOW A MINIMUM OF THREE REFERENCE TIES TO DURABLE PHYSICAL OBJECTS, RELEVANT MONUMENTS AND PHYSICAL CONDITIONS THAT WILL ENABLE RECOVERY OF THE CORNER.)

2741

FILED
RECORDERS OFFICE
JONES COUNTY IOWA

91 MAY 22 AM 11:55

BOOK 302 PAGE 245
DORIS JEANNE HERREN
RECORDER
S^o pd



I HEREBY CERTIFY THAT THE SURVEY WORK WAS COMPLETED AND THIS CERTIFICATE WAS PREPARED BY ME OR UNDER MY DIRECT PERSONAL SUPERVISION AND THAT I AM A DULY REGISTERED LAND SURVEYOR UNDER THE LAWS OF THE STATE OF IOWA.

SIGNATURE: *Dennis R. Kunze*
DENNIS R. KUNZE

DATE: 5-22-1991 REG. NO. 10679

LAND CORNERS TO BE RECORDED			
CORNERS	SECTION	TWP.	RANGE
SE	25	T-84-N	R-3-W
S1/4	25	T-84-N	R-3-W

