

UNITED STATES PUBLIC LAND SURVEY CORNER CERTIFICATE
OF

LAND SURVEY MONUMENTS SITUATED IN SECTION 25, TOWNSHIP 84, RANGE 3W, OF THE 5TH PRINCIPAL MERIDIAN JONES COUNTY IOWA.

PREVIOUSLY RECORDED IN DOES NOT APPLY IN COUNTY RECORDER'S OFFICE.

(BOOK, PAGE, DOCUMENT NUMBER, ETC.)

(SHOW REASON FOR PREPARING THIS CERTIFICATE, THE EVIDENCE AND DETAILED PROCEDURES USED IN ESTABLISHING THE CORNER POSITIONS AND MONUMENTATION FOUND OR PLACED.)

MONUMENT DESCRIPTION AND REMARKS: RE-REFERENCED CORNERS FOR R.O.W. ACQUISITIONS

PLAN - VIEW

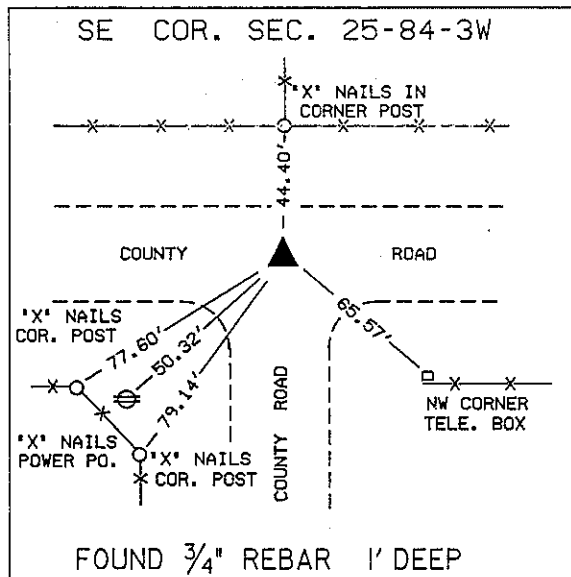
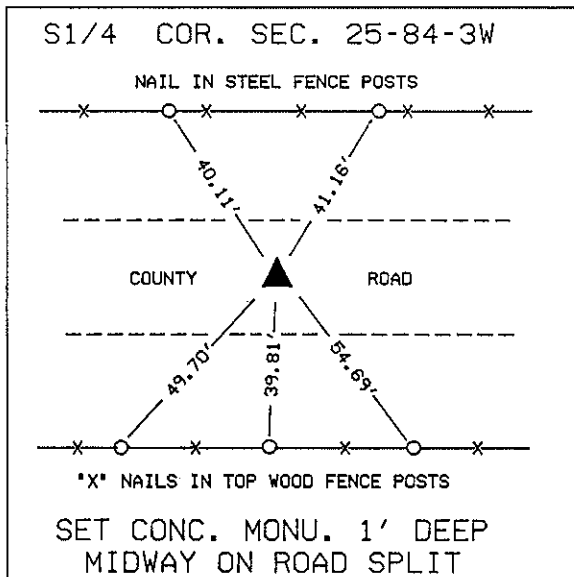
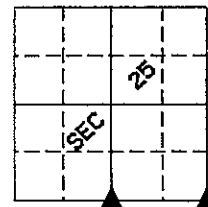
(SHOW A MINIMUM OF THREE REFERENCE TIES TO DURABLE PHYSICAL OBJECTS, RELEVANT MONUMENTS AND PHYSICAL CONDITIONS THAT WILL ENABLE RECOVERY OF THE CORNER.)

2741

FILED
RECORDERS OFFICE
JONES COUNTY IOWA

91 MAY 22 AM 11:55

BOOK 302 PAGE 245
DORIS JEANNE HERREN
RECORDER
S^opl



I HEREBY CERTIFY THAT THE SURVEY WORK WAS COMPLETED AND THIS CERTIFICATE WAS PREPARED BY ME OR UNDER MY DIRECT PERSONAL SUPERVISION AND THAT I AM A DULY REGISTERED LAND SURVEYOR UNDER THE LAWS OF THE STATE OF IOWA.

SIGNATURE: *Dennis R. Kunze*
DENNIS R. KUNZE

DATE: 5-22-1991 REG. NO. 10679

LAND CORNERS TO BE RECORDED			
CORNERS	SECTION	TWP.	RANGE
SE	25	T-84-N	R-3-W
S1/4	25	T-84-N	R-3-W

