

Instrument #: 2022-1435
 05/12/2022 09:01:13 AM Total Pages: 1
 ZSC SECTION CORNER CERTIFICATE
 Recording Fee: \$7.00 Transfer Tax: \$0
 Sheri L. Jones, Recorder, Jones County Iowa



—PREPARED BY AND RETURN TO: MMS CONSULTANTS, INC. 1917 S. GILBERT ST. IOWA CITY, IOWA 52240 (319)351-8282—

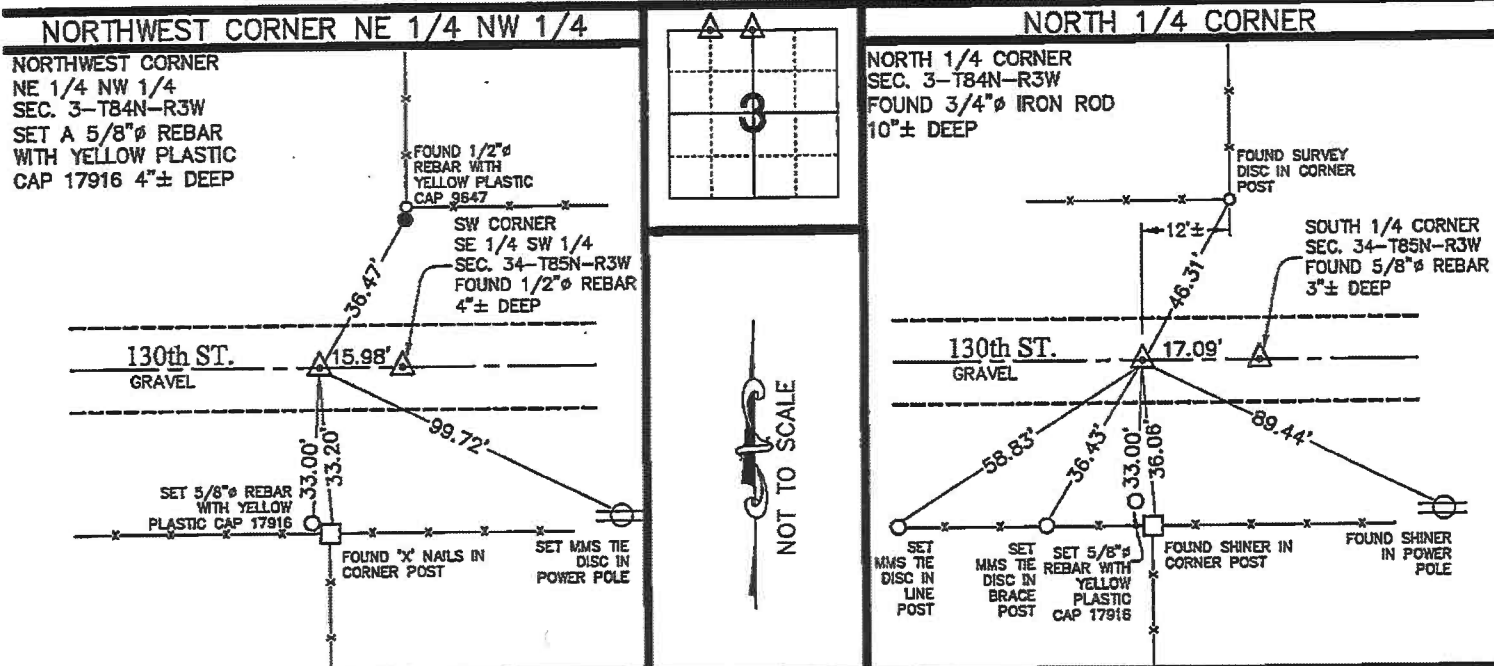
U.S. PUBLIC LAND SURVEY CORNER CERTIFICATE

FOR LAND SURVEY MONUMENTS SITUATED IN SECTION 3, TOWNSHIP 84 NORTH, RANGE 3 WEST, OF THE FIFTH PRINCIPAL MERIDIAN, JONES COUNTY, IOWA

REASON FOR PREPARING CERTIFICATE:

- A) THERE IS NO CERTIFICATE FOR THE CORNER ON FILE WITH THE RECORDER OF THE COUNTY IN WHICH THE CORNER IS LOCATED.
- B) THE CORNER POSITION DIFFERS FROM THAT SHOWN IN THE PUBLIC RECORDS.
- C) THE CORNER MONUMENT WAS REPLACED OR MODIFIED.
- D) THE REFERENCE TIES REFERRED TO IN AN EXISTING PUBLIC RECORD WERE MISSING OR ARE NOT CORRECT.

RECOVERY TIE DRAWING



MONUMENT DESCRIPTION AND REMARKS :

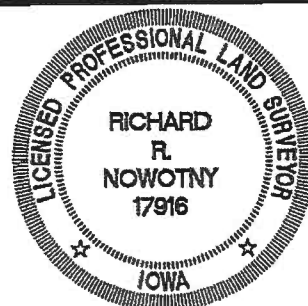
THE NORTHWEST CORNER OF THE NE 1/4 OF THE NW 1/4 OF SECTION 3, TOWNSHIP 84 NORTH, RANGE 3 WEST OF THE 5TH P.M., SET A 5/8"Ø REBAR WITH A YELLOW PLASTIC CAP, 4"± DEEP ON A LINE FROM THE N 1/4 CORNER THROUGH THE SW CORNER OF THE SE 1/4 OF THE SW 1/4 OF SEC. 34-T85N-R3W AND EQUIDISTANT FROM THE N 1/4 CORNER AND THE NW CORNER OF SEC. 3-T84N-R3W OF THE 5TH P.M. JONES COUNTY, IOWA AND TIED IT OUT AS SHOWN ABOVE. THERE WAS NO PREVIOUS CORNER CERTIFICATE ON FILE FOR THIS SECTION CORNER. AT THE SW CORNER OF THE SE 1/4 OF THE SW 1/4, A FOUND 1/2"Ø REBAR WAS FOUND AS SHOWN ON THE PLAT OF SURVEY (PARCEL 2004-89) BY STEPHEN M. BRAIN, LS 9647, AND RECORDED IN BOOK P, PAGE 195 IN THE RECORDS OF THE JONES COUNTY RECORDER'S OFFICE. NO RECORDED CORNER CERTIFICATE WAS DISCOVERED FOR THIS MONUMENT.

MONUMENT DESCRIPTION AND REMARKS :

THE NORTH 1/4 CORNER OF SECTION 3, TOWNSHIP 86 NORTH, RANGE 3 WEST OF THE 5TH P.M., FOUND A 3/4"Ø IRON ROD, 10"± DEEP IN LINE WITH A FENCE LINE TO THE SOUTH AND APPROXIMATELY 12' WEST OF A FENCE LINE TO THE NORTH. A 5/8"Ø REBAR WAS FOUND 17'± TO THE EAST, 3"± DEEP WHICH HAS BEEN USED AND CERTIFIED AS INSTRUMENT #2015-3038 IN THE RECORDS OF THE JONES COUNTY RECORDER'S OFFICE, AS THE S 1/4 CORNER OF SEC. 34-T85N-R3W OF THE 5TH P.M., JONES COUNTY, IOWA. THE SECTION CORNER WAS TIED OUT AS SHOWN ABOVE.

I hereby certify that this land surveying document was prepared and the related survey work was performed by me or under my direct personal supervision and that I am a duly licensed Professional Land Surveyor under the laws of the State of Iowa.

Richard R. Nowotny 5-9 2022.
 RICHARD R. NOWOTNY
 P.L.S. Iowa Lic. No. 17916
 My license renewal date is December 31, 20 23.



| | |
|-------------|--------------|
| Drawn by: | Scale: |
| DMW | NONE |
| Checked by: | Date: |
| RRN | 04/28/2022 |
| Field Book: | Project No.: |
| 1339 | 11208-002 |

U.S. PUBLIC LAND SURVEY CORNER CERTIFICATE
 SECTION 3-T86N-R3W OF THE 5TH P.M.
 JONES COUNTY, IOWA
 EDWARDS PROJECT

MMS CONSULTANTS, INC.
 IOWA CITY, IOWA 52240
 (319) 351-8282
 www.mmsconsultants.net



Date Revision

Instrument #: 2015-3038
 10/23/2015 09:53:57 AM Total Pages: 1
 ZSC SECTION CORNER CERTIFICATE
 Recording Fee: \$7.00 Transfer Tax: \$0
 Sheri L. Jones, Recorder, Jones County Iowa



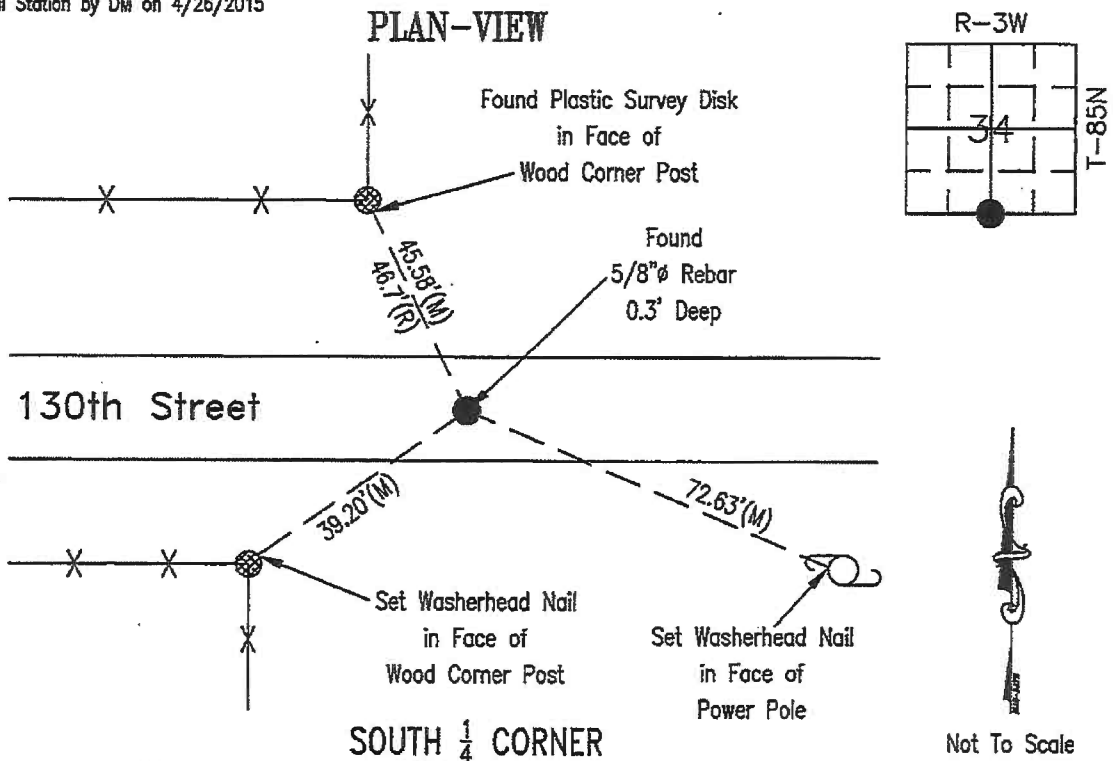
Prepared by: Dean E. Beranek, L.S., 821 North Columbus, West Liberty, Iowa 52776 / Phone: 319-627-6521

UNITED STATES PUBLIC LAND SURVEY CORNER CERTIFICATE OF

Land Survey Monuments situated in Section 34, Township T-85N, Range R-3W, of the Fifth Principal Meridian, Jones County, Iowa. Previously recorded as Document File Number 2000 2470, in the Office of the Jones County Recorder.

Monument Description and Remarks: South $\frac{1}{4}$ Corner - Found $\frac{5}{8}$ " \emptyset Rebar 0.3' deep near the centerline of 130th Street and measured. One previous tie found.

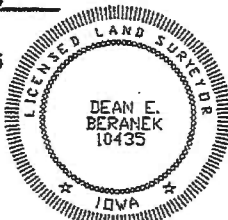
Measured with Total Station by DM on 4/26/2015



I HEREBY CERTIFY THAT THIS LAND SURVEYING DOCUMENT WAS PREPARED AND THE RELATED SURVEY WORK WAS PERFORMED BY ME OR UNDER MY DIRECT PERSONAL SUPERVISION AND THAT I AM A DULY LICENSED LAND SURVEYOR UNDER THE LAWS OF THE STATE OF IOWA.

Dean E. Beranek 10/20/15
 Dean E. Beranek (date)

IOWA LICENSE NUMBER 10435
 MY LICENSE RENEWAL DATE IS DECEMBER 31, 2015
 PAGES OR SHEETS COVERED BY THIS SEAL:
 THIS SHEET ONLY



List Corners to be Indexed

| Corner(s) | Section | Township | Range |
|--------------|---------|----------|-------|
| S 1/4 CORNER | 34 | T-85N | R-3W |

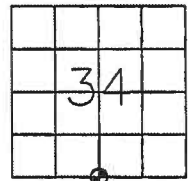
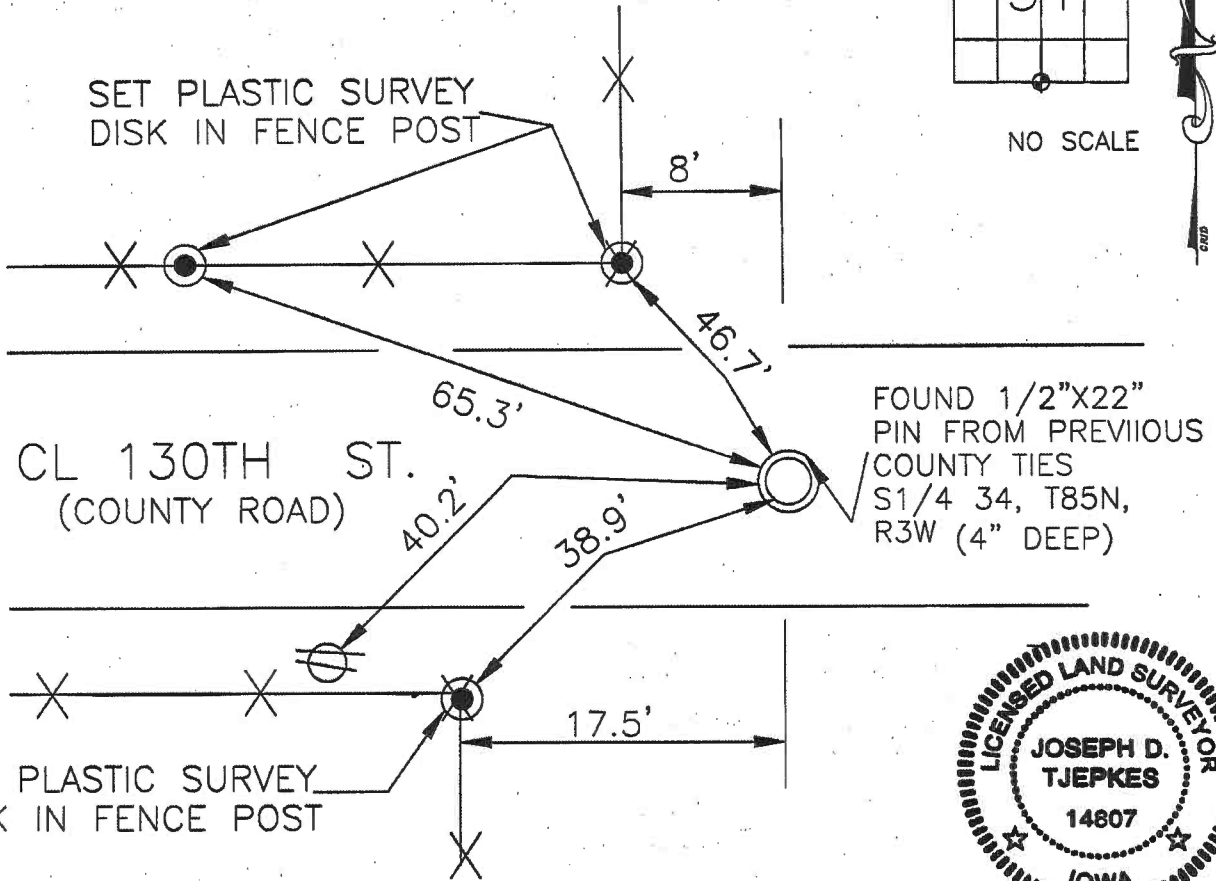
Wayne

JONES COUNTY ENGINEER, 19501 HWY. 64, ANAMOSA, IOWA

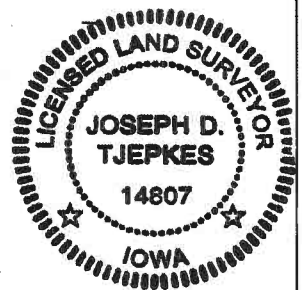
UNITED STATES PUBLIC LAND SURVEY CORNER CERTIFICATE

LAND SURVEY MONUMENTS SITUATED IN SECTION 34, TOWNSHIP 85 NORTH, RANGE 3 WEST OF THE 5TH P.M., JONES COUNTY, IOWA

CON
COR



NO SCALE



PREVIOUSLY RECORDED IN BOOK 342, PAGE 10
 MONUMENT DESCRIPTION AND HOW ESTABLISHED FOUND
1/2"X22" IRON PIN 4" BELOW ROAD SURFACE PER TIES IN JONES
COUNTY ENGINEER'S FIELD BOOK 271, PAGE 19 AND SET NEW
REFERENCE TIES AS INDICATED.

I hereby declare that this plat, survey or report was made by me or under my direct personal supervision and that I am a duly registered Land Surveyor under the laws of the State of Iowa.

Signed:

Joseph D. Tjepkes 5-9-2000

Joseph D. Tjepkes L.S. Iowa Reg. No. 14807
 My Registration Renewal Date is December 31, 2000

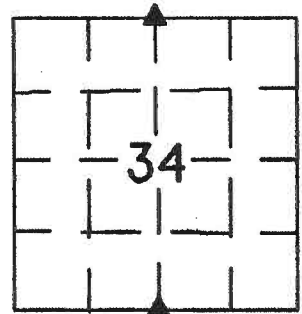
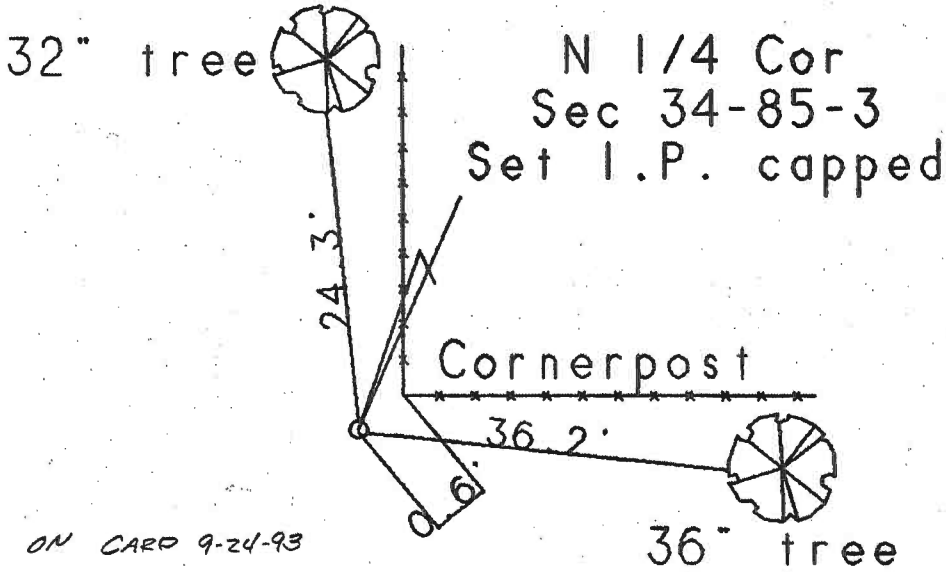
CORNERS TO BE INDEXED

| CORNER | SECTION | TOWNSHIP | RANGE |
|--------|---------|----------|-------|
| S-1/4 | 34 | 85N | 3W |

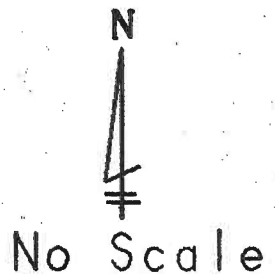
JONES COUNTY ENGINEER
 19501 HWY. 64,
 ANAMOSA, IOWA

United States Public Land Survey Corner Certificate

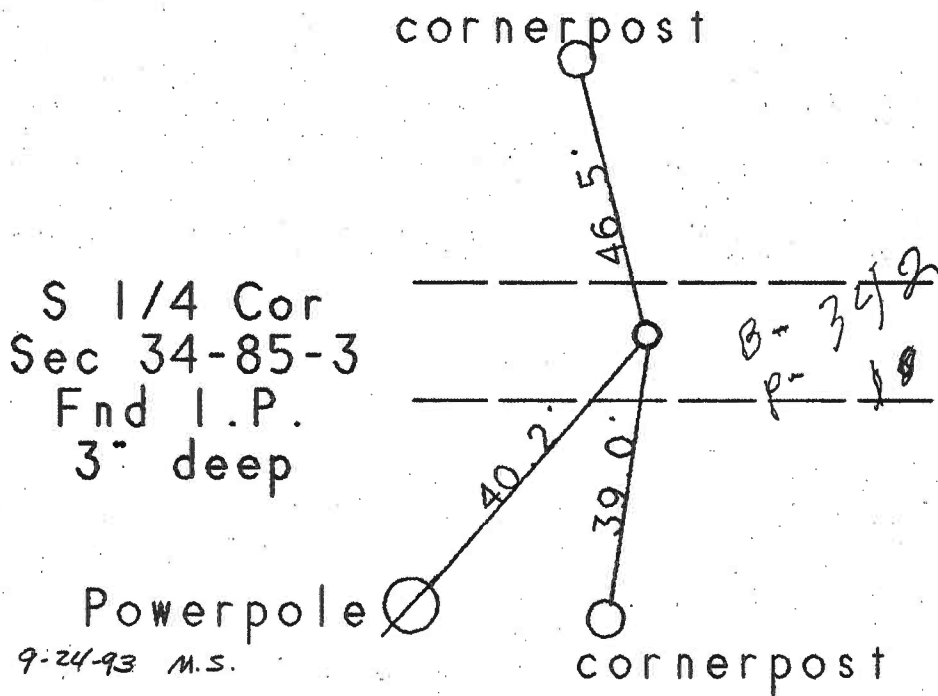
Land survey corner in Section 34
 Township 85 N Range 3 West in
Jones County, Iowa.



SECTION



ON CARD 9-24-93



ON CARD 9-24-93 M.S.

Certification

I hereby certify that this plot and survey was made by me or under my direct supervision and that I am a duly Registered Land Surveyor under the laws of the State of Iowa.

Harold E. Dillon 7/17/93
 Harold E. Dillon Reg.#6581 date

85334e-071793, 85334w-071793