

2006 0375

FILED
RECORDERS OFFICE
JONES COUNTY IOWA

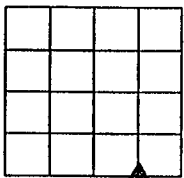
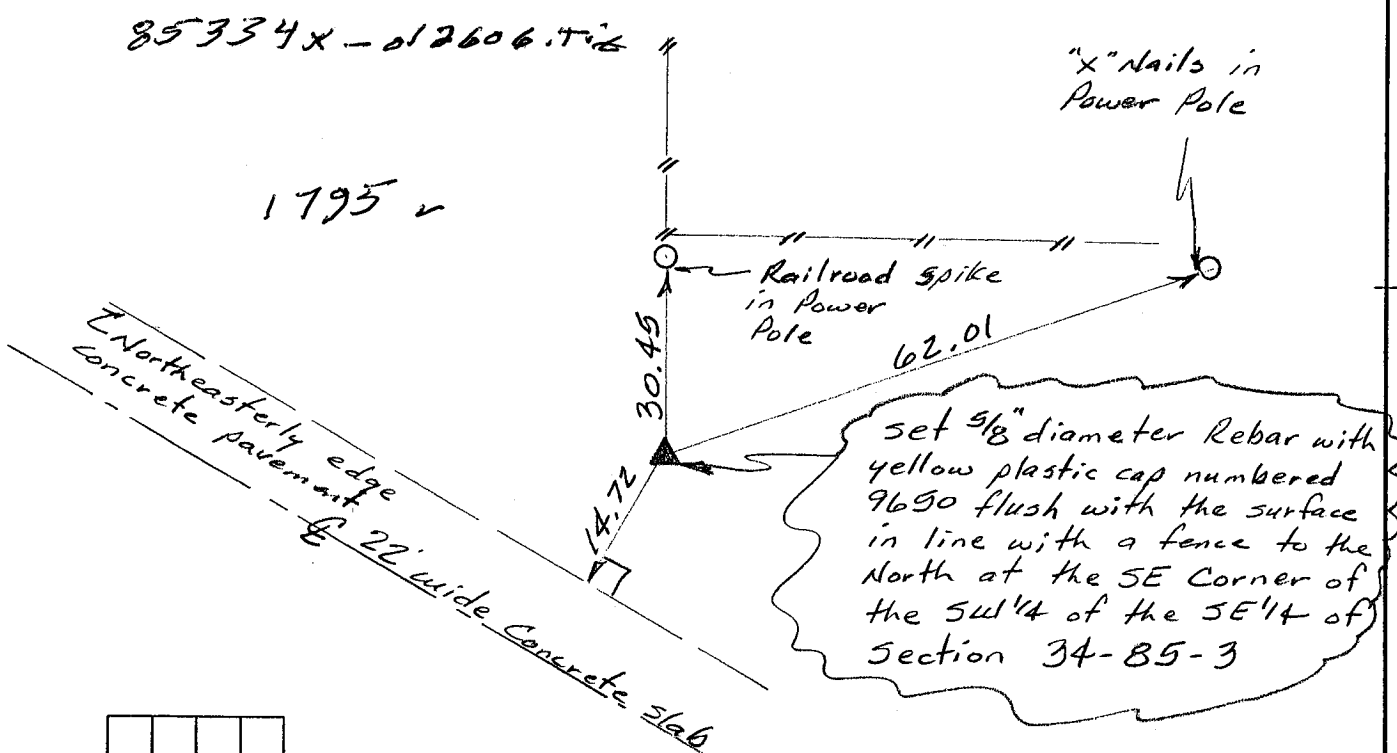
06 JAN 27 AM 11:30

MARIE KRUTZFIELD
RECORDER 7.00 Pd

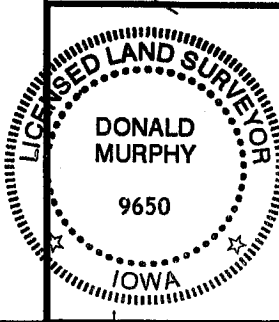
PREPARED BY: DONALD MURPHY SHIVE HATTERY INC. SUITE 500 201 THIRD AVE S.E. P.O. BOX 1803 CEDAR RAPIDS, IOWA 52406 (319)364-0227

UNITED STATES PUBLIC LAND SURVEY CORNER CERTIFICATE

Land Survey Monuments Situated in Section 34, Township 85 North, Range 3 West of the Fifth Principal Meridian, Jones County, Iowa. Narrative: *This document is being prepared because there currently is no certificate on file with the county recorder for this corner. The SW 1/4 corner and the SE corner of this section were found in agreement with ties on other recorded certificates. The corner position was established mid-way and on line between these two corners and monumented by a 5/8" diameter rebar with a yellow plastic cap numbered 9650. New references have been taken as shown in the plan view below.*



Corners to be indexed:
SE Corner of the
SW 1/4 of the SE 1/4 of
Section 34-85-3



I hereby certify that this land surveying document was prepared and the related survey work was performed by me or under my direct personal supervision and that I am a duly Licensed Land Surveyor under the Laws of the State of Iowa.

Donald Murphy 26 Jan 2006
(signature) (date)

Printed or typed name: Donald Murphy
License number: 9650

My license renewal date is December 31, 2006

Pages, or sheets covered by this seal: 1

A