

Marie Krutzfield, Recorder  
 Jones County, Iowa

RETURN TO &  
 PREPARED BY: LEO P. BONIFAZI SCHNOOR-BONIFAZI ENGINEERING & SURVEYING LC, 2750 FIRST AVE. NE, STE. 110, CEDAR RAPIDS, IA 52402 319-298-8888

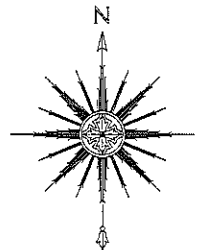
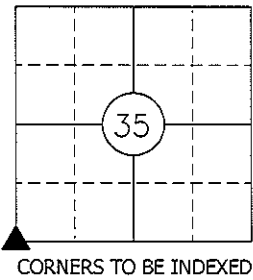
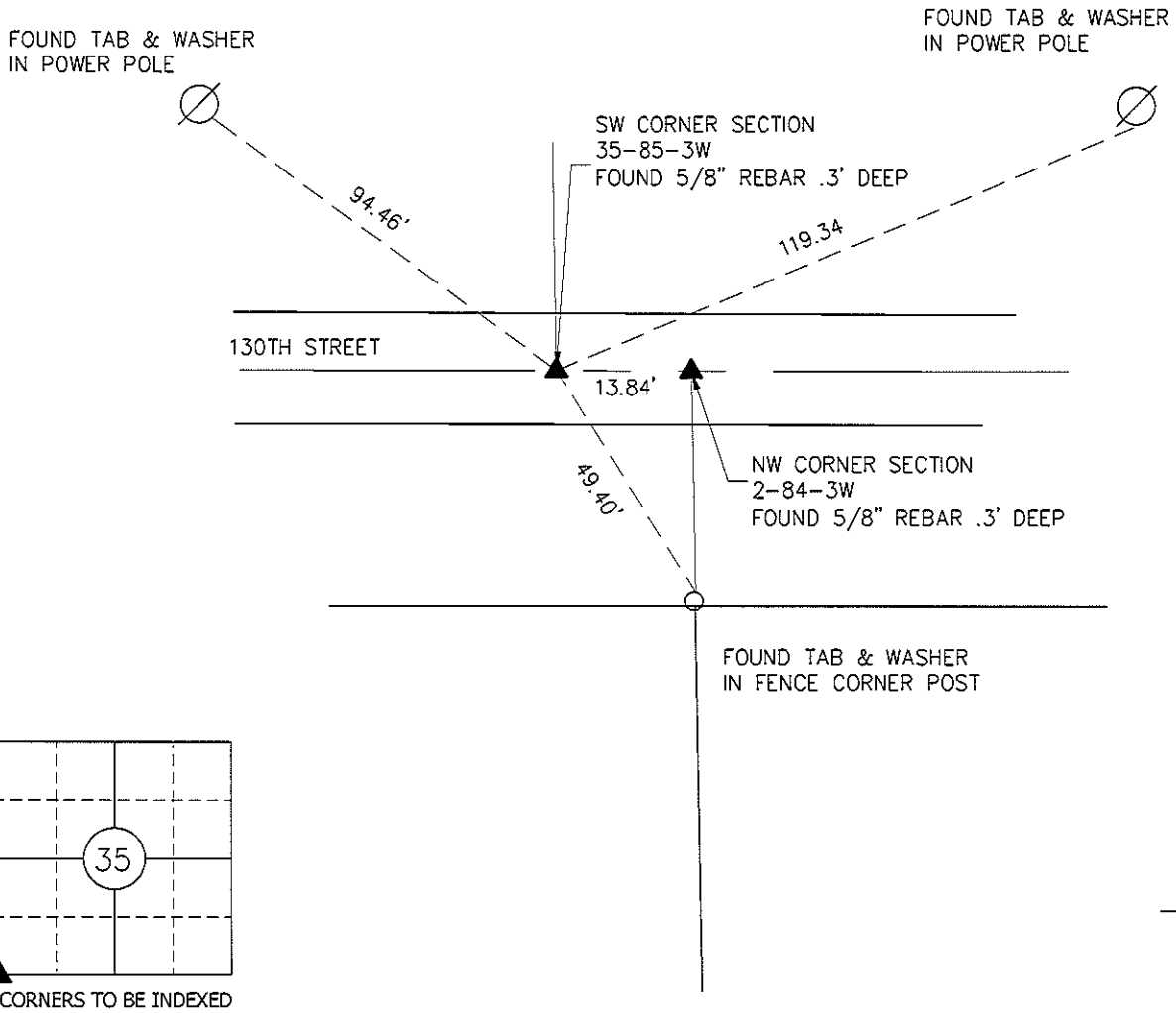
UNITED STATES PUBLIC LAND SURVEY CORNER CERTIFICATE

Land Survey Monuments Situated in Section 35, Township 85 North, Range 3W of the Fifth Principal Meridian, JONES County, Iowa.

Reason for filing:  a. No certificate of record found.  b. Monument or ties found differ from record.  c. Replaced section corner.

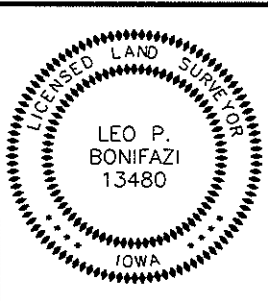
SW CORNER SECTION 35-85-3

FOUND 5/8" REBAR IN ACCORDANCE WITH PREVIOUS SURVEYS IN SECTION 34 & SECTION 2. EXISTING TIES PRESENT



SW CORNER 35-85-3

JOB: 08103
DRAWN: LPB
NOT TO SCALE
DATE: 11-10-08



I HEREBY CERTIFY THAT THIS LAND SURVEYING DOCUMENT WAS PREPARED AND THE RELATED SURVEY WORK WAS PERFORMED BY ME OR UNDER MY DIRECT PERSONAL SUPERVISION AND THAT I AM A DULY LICENSED LAND SURVEYOR UNDER THE LAWS OF THE STATE OF IOWA

SIGNATURE: *[Signature]* DATE: 11-10-08

LEO P. BONIFAZI

LICENSE NO. 13480

SHEETS COVERED BY THIS SEAL: *This Sheet only*

MY LICENSE RENEWAL DATE IS DECEMBER 31, 2009

SCHNOOR-BONIFAZI  
 ENGINEERING & SURVEYING, LC  
 2750 FIRST AVE. NE, STE. 110  
 CEDAR RAPIDS, IA 52402  
 (319) 298-8888 (PHONE)  
 (319) 298-8889 (FAX)  
 s-b-engineering.com



2004 1657

FILED  
RECORDERS OFFICE  
JONES COUNTY IOWA

04 MAY 13 AM 9:30

MARIE KRUTZFIELD  
RECORDER No Fee

J.D. TJEPKES, LS. JONES COUNTY ENGINEER'S OFFICE, 19501 HWY. 64, ANAMOSA, IOWA, 52205 (319)462-3785

# UNITED STATES PUBLIC LAND SURVEY CORNER CERTIFICATE

LAND SURVEY MONUMENTS SITUATED IN SECTION 3, TOWNSHIP 84  
NORTH, RANGE 3 WEST OF THE 5TH P.M., JONES COUNTY, IOWA

**CORNERS TO BE INDEXED**

CORNER	SECTION	TOWNSHIP	RANGE
E 1/4	3	84N	3W

OFFICE FILE NO. 84303o\_050704.tif

FIELD NOTES:  
9-29-2003  
BK #358  
P 78

PREVIOUSLY RECORDED IN BOOK \_\_\_\_\_, PAGE \_\_\_\_\_  
MONUMENT DESCRIPTION AND HOW ESTABLISHED \_\_\_\_\_  
PER TIES ON RECORD AT JONES CO. ENGINEER'S OFFICE, DATED 1979 & 1981, FOUND BRASS PLUG 1.92' EAST OF CENTERLINE X-44. RETIED E1/4 COR SECTION 3 T84N R3W AS INDICATED.

**CORNERS TO BE INDEXED**

CORNER	SECTION	TOWNSHIP	RANGE
NE	3	84N	3W

OFFICE FILE NO. 84303e\_050704.tif

FIELD NOTES:  
9-22-2003  
BK #358  
P 79

PREVIOUSLY RECORDED IN BOOK NA, PAGE NA  
MONUMENT DESCRIPTION AND HOW ESTABLISHED \_\_\_\_\_  
PER TIES ON RECORD AT JONES CO. ENGINEER'S OFFICE DATED 1978, FOUND 1/2" X 22" IRON PIN BURIED 18". RETIED NE CORNER SECTION 3 T84N R3W, AS INDICATED.

**CORNERS TO BE INDEXED**

CORNER	SECTION	TOWNSHIP	RANGE

OFFICE FILE NO. \_\_\_\_\_

PREVIOUSLY RECORDED IN BOOK \_\_\_\_\_, PAGE \_\_\_\_\_  
MONUMENT DESCRIPTION AND HOW ESTABLISHED \_\_\_\_\_

**CORNERS TO BE INDEXED**

CORNER	SECTION	TOWNSHIP	RANGE

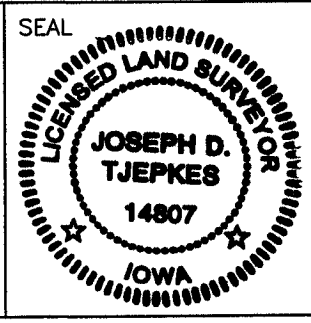
OFFICE FILE NO. \_\_\_\_\_

PREVIOUSLY RECORDED IN BOOK \_\_\_\_\_, PAGE \_\_\_\_\_  
MONUMENT DESCRIPTION AND HOW ESTABLISHED \_\_\_\_\_

I hereby declare that this plat, survey or report was made by me or under my direct personal supervision and that I am a duly registered Land Surveyor under the laws of the State of Iowa.

Signed: Joseph D. Tjepkes 5-13-04

Joseph D. Tjepkes L.S. Iowa Reg. No. 14807  
My Registration Renewal Date is December 31, 2004



J.D. TJEPKES LS 14807  
JONES COUNTY  
ENGINEER'S OFFICE

19501 HWY. 64,  
ANAMOSA, IOWA,  
52205 (319)462-3785