

Instrument #: 2016-3620
 12/21/2016 10:10:13 AM Total Pages: 1
 ZSC SECTION CORNER CERTIFICATE
 Recording Fee: \$7.00 Transfer Tax: \$0
 Sheri L. Jones, Recorder, Jones County Iowa



RETURN TO &

PREPARED BY: LEO P. BONIFAZI SCHNOOR-BONIFAZI ENGINEERING & SURVEYING LC, 431 FIFTH AVENUE SW, CEDAR RAPIDS, IA 52404 319-298-8888

UNITED STATES PUBLIC LAND SURVEY CORNER CERTIFICATE

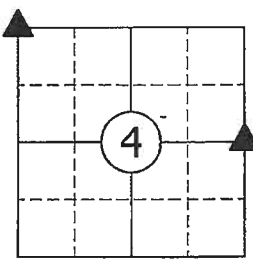
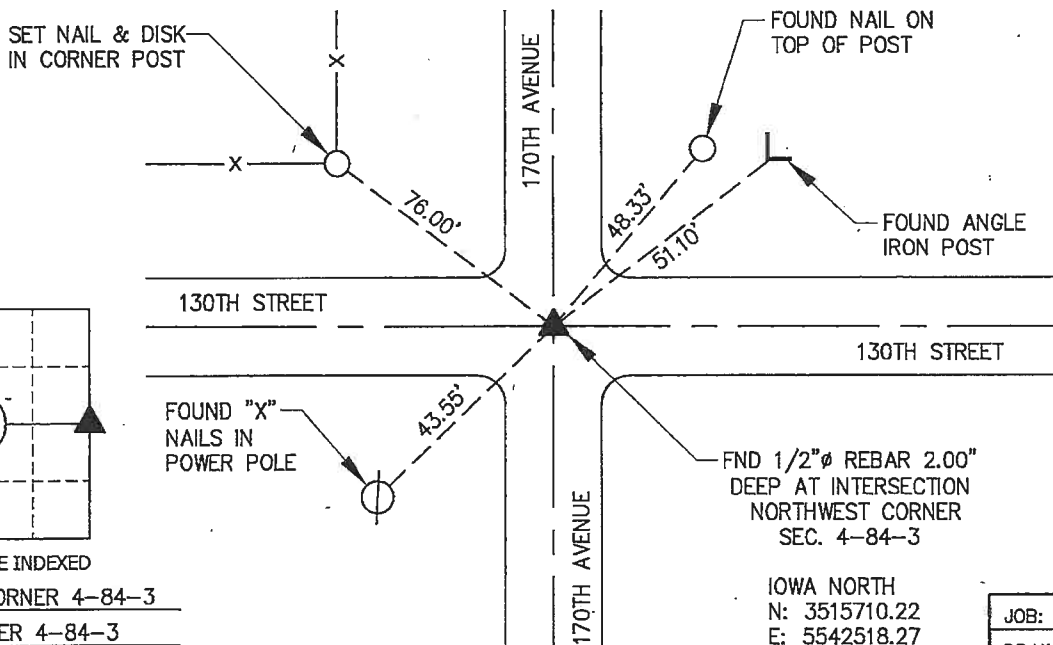
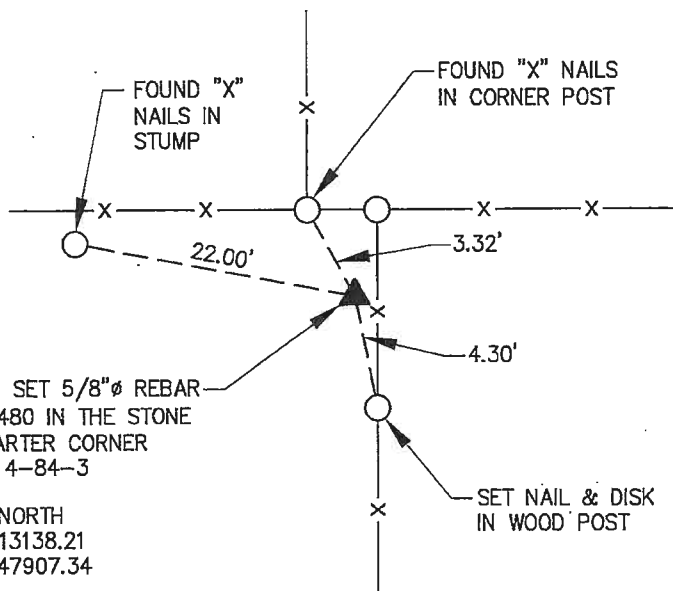
Land Survey Monuments Situated in Section 4, Township 84 North, Range 3 West of the Fifth Principal Meridian, JONES County, Iowa.

Reason for filing: a. No certificate of record found. b. Monument or ties found differ from record. c. Replaced section corner.

EAST QUARTER CORNER - FOUND LIMESTONE 2.00' DEEP USING A CORNER CERTIFICATE RECORDED IN BOOK 397, PAGE 90 AT THE COUNTY RECORDER'S OFFICE. SET 5/8"Ø REBAR WITH ORANGE PLASTIC CAP NO. 13480 0.50' WEST OF THE NORTH-SOUTH FENCE 2.00" DEEP USING REMAINING TIES. ADDITIONAL TIE SET AS SHOWN BELOW. MONUMENT NOW A 5/8"Ø REBAR WITH ORANGE CAP NO. 13480 CENTERED OVER STONE.

NORTHWEST CORNER - FOUND A 1/2"Ø REBAR 2.00" DEEP AT THE INTERSECTION OF 130TH STREET AND 170TH AVENUE USING A CORNER CERTIFICATE RECORDED IN BOOK 422, PAGE 276 AT THE COUNTY RECORDER'S OFFICE. 2 TIES REMAINED. SET 2 ADDITIONAL TIES AS SHOWN BELOW.

COORDINATES LISTED HEREON ARE DERIVED FROM THE IOWA DEPARTMENT OF TRANSPORTATION REAL TIME NETWORK COLLECTED IN THE NAD83(2011) (Epoch 2010.0000) NETWORK REF FRAME.



CORNERS TO BE INDEXED
 EAST QUARTER CORNER 4-84-3
 NORTHWEST CORNER 4-84-3

JOB:	16086
DRAWN:	E. SMALL
NOT TO SCALE	
DATE:	12/20/2016



I HEREBY CERTIFY THAT THIS LAND SURVEYING DOCUMENT WAS PREPARED AND THE RELATED SURVEY WORK WAS PERFORMED BY ME OR UNDER MY DIRECT PERSONAL SUPERVISION AND THAT I AM A DULY LICENSED PROFESSIONAL LAND SURVEYOR UNDER THE LAWS OF THE STATE OF IOWA.

SIGNATURE: *Leo P. Bonifazi* DATE: 12-20-16
 LEO P. BONIFAZI
 LICENSE NO. 13480
 SHEETS COVERED BY THIS SEAL: THIS SHEET ONLY
 MY LICENSE RENEWAL DATE IS DECEMBER 31, 2017

SCHNOOR-BONIFAZI ENGINEERING & SURVEYING, LC
 431 FIFTH AVENUE SW
 CEDAR RAPIDS, IA 52404
 (319) 298-8888 (PHONE)
 s-b-engineering.com

Jackson

MMS CONSULTANTS INC., 1917 SO. GILBERT ST, IOWA CITY, IA, 52240, PH 319-351-8282

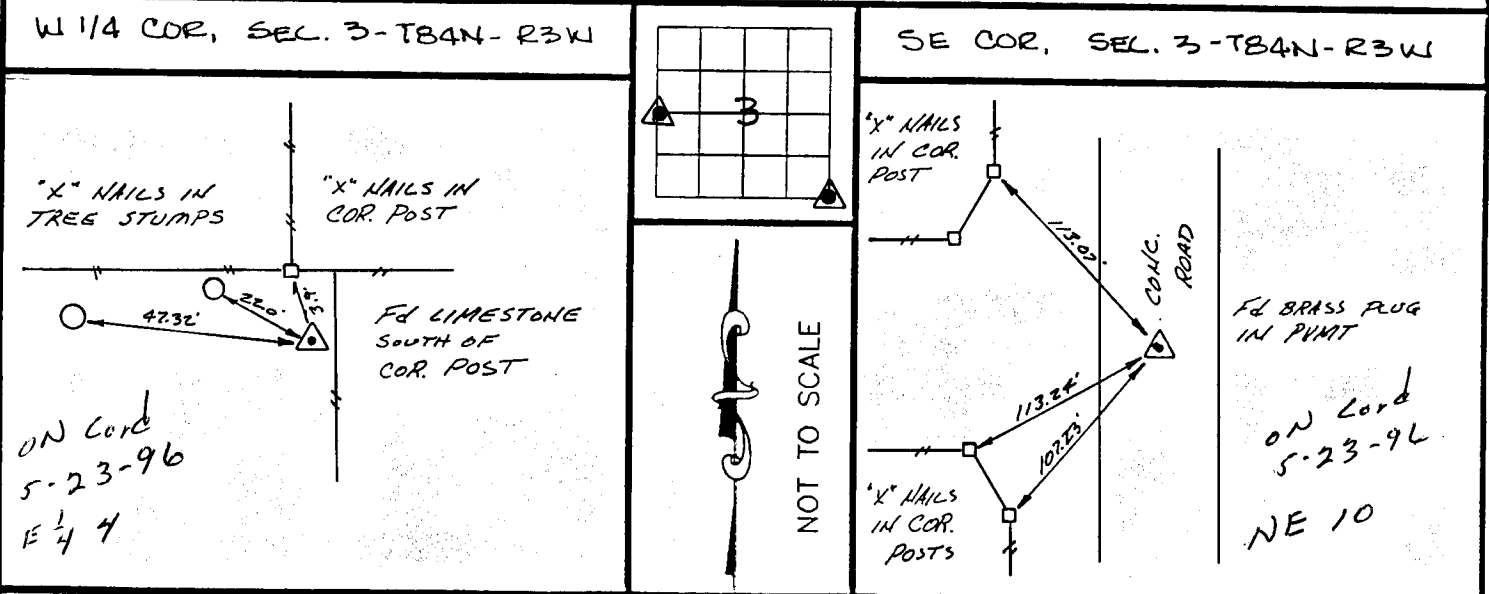
U.S. PUBLIC LAND SURVEY CORNER CERTIFICATE

FOR LAND SURVEY MONUMENTS SITUATED IN SECTION 3, TOWNSHIP 84 NORTH, RANGE 3 WEST, OF THE FIFTH PRINCIPAL MERIDIAN, JONES, COUNTY, IOWA.

REASON FOR PREPARING CERTIFICATE:

- A) THERE IS NO CERTIFICATE FOR THE CORNER ON FILE WITH THE RECORDER.
- B) CORNER FOUND DIFFERS FROM PREVIOUSLY RECORDED CERTIFICATE RECORDED IN BOOK ____, AT PAGE ____.

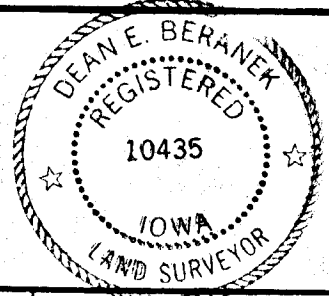
RECOVERY TIE DRAWING



MONUMENT DESCRIPTION AND REMARKS :
 Fd LIMESTONE 1' DEEP

MONUMENT DESCRIPTION AND REMARKS :
 Fd BRASS PLUG IN PAVEMENT

I HEREBY CERTIFY THAT THE CORNER LOCATION(S) SHOWN ON THIS RECORD WERE DETERMINED BY ME OR UNDER MY DIRECT PERSONAL SUPERVISION AND THAT THIS U.S. PUBLIC LAND SURVEY MONUMENT RECORD IS CORRECT AND COMPLETE TO THE BEST OF MY KNOWLEDGE AND BELIEF.



Deane E. Beranek 4-6-96
 Deane E. Beranek, L.S. Ia. Reg. No. 10435 DATE
 MY BIENNIAL RENEWAL DATE IS DECEMBER 31, 1997.

<p>LEGEND</p> <ul style="list-style-type: none"> ▲ GOVERNMENT CORNER ○ 5/8" TIE PIN SET — CENTERLINE - - - EXISTING FENCE LINE - - - R.O.W. LINE 	<p>SHEET TITLE: U.S. PUBLIC LAND SURVEY CORNER CERTIFICATE</p> <p>PROJECT TITLE: SECTION CORNER TIES BOUNDARY SURVEY (WILLEMS)</p>	<p>MMS CONSULTANTS, INC. Iowa City, Iowa 319-351-8282</p>
<p>D W D M A S</p>	<p>X I O</p>	<p>A P P</p>
<p>D A T E 1-2-92</p>	<p>S C A L E NONE</p>	<p>F N O B 273 P N O J 2965-001</p>