

#3192

FILED
RECORDERS OFFICE
JONES COUNTY IOWA

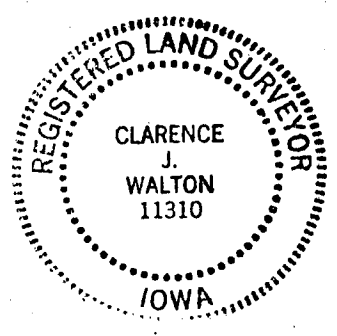
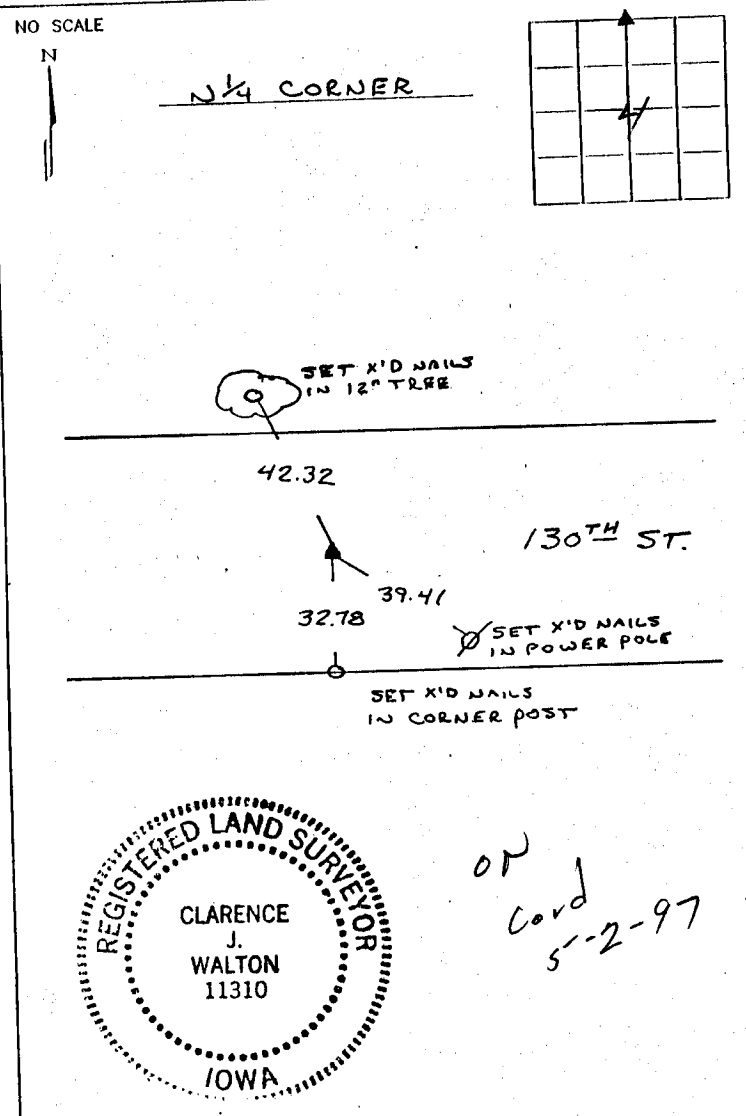
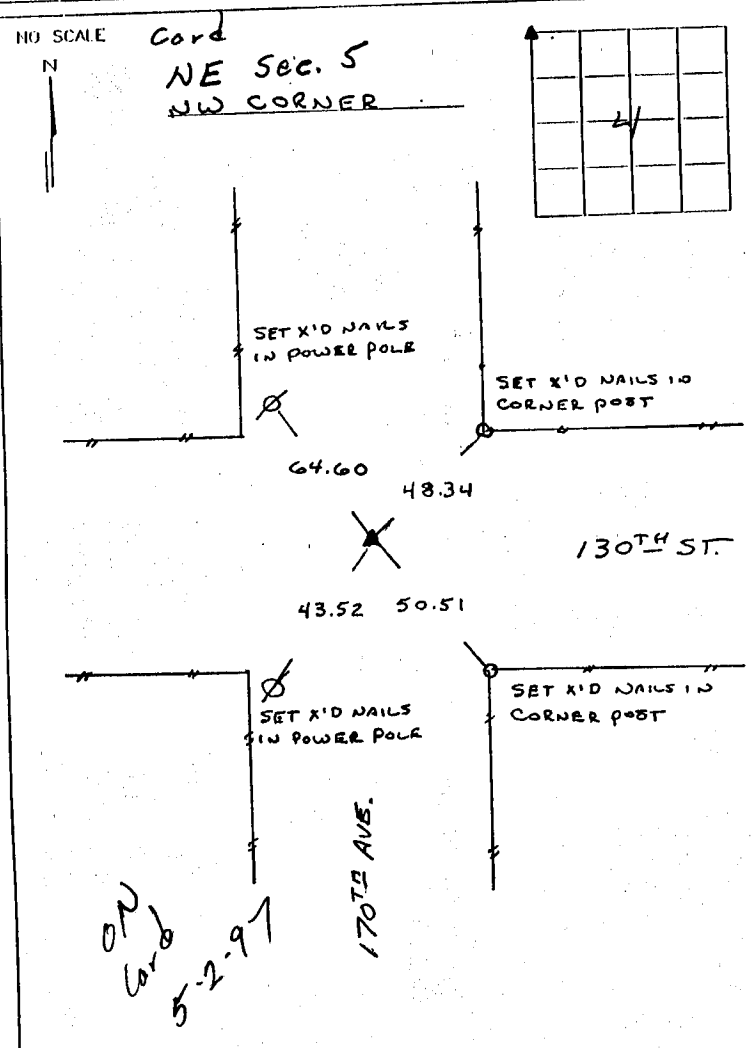
97 APR 16 AM 9:58

BOOK 422 PAGE 276
LINDA J. BENDIXEN
RECORDER *ljb*

BRAIN ENGINEERING, INC., 777 10TH STREET, MARION, IOWA 52302 PH. (319) 373-1318

UNITED STATES PUBLIC LAND SURVEY CORNER CERTIFICATE

LAND SURVEY MONUMENTS SITUATED IN SECTION 4, TOWNSHIP 84 NORTH
RANGE 3 WEST OF THE 5TH P.M., JONES COUNTY, IOWA.



PREVIOUSLY RECORDED IN BOOK _____ PAGE _____

MONUMENT DESCRIPTION AND HOW ESTABLISHED _____

FOUND 1/2" REBAR

PREVIOUSLY RECORDED IN BOOK _____ PAGE _____

MONUMENT DESCRIPTION AND HOW ESTABLISHED _____

FOUND "TEE" BAR IN LINE WITH FENCE SOUTH.

I hereby declare that this plat, survey or report was made by me or under my direct personal supervision and that I am a duly registered Land Surveyor under the laws of the State of Iowa.

Signed Clarence J. Walton Date 4/7/97

Clarence J. Walton L.S. Iowa Reg No. 11310
My Registration Renewal Date Is December 31, 1997

CORNER	SECTION	TOWNSHIP	RANGE
NW	4	84N	3W
N 1/4	4	84N	3W

BRAIN ENGINEERING, INC.
777 10TH STREET
MARION, IOWA 52302
(319) 373-1318

#19659.10