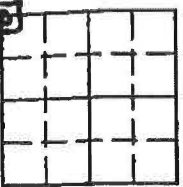


Instrument #: 2025-3173
12/15/2025 09:54:21 AM Total Pages: 1
ZSC SECTION CORNER CERTIFICATE
Recording Fee: \$7.00 Transfer Tax: \$0
Sheri L. Jones, Recorder, Jones County Iowa



Prepared by: Richard M. Kordick, P.E.L.S., 689 185th Street, Tipton, Iowa 52712 Phone: 563-432-64234

U.S. PUBLIC LAND SURVEY CORNER CERTIFICATE



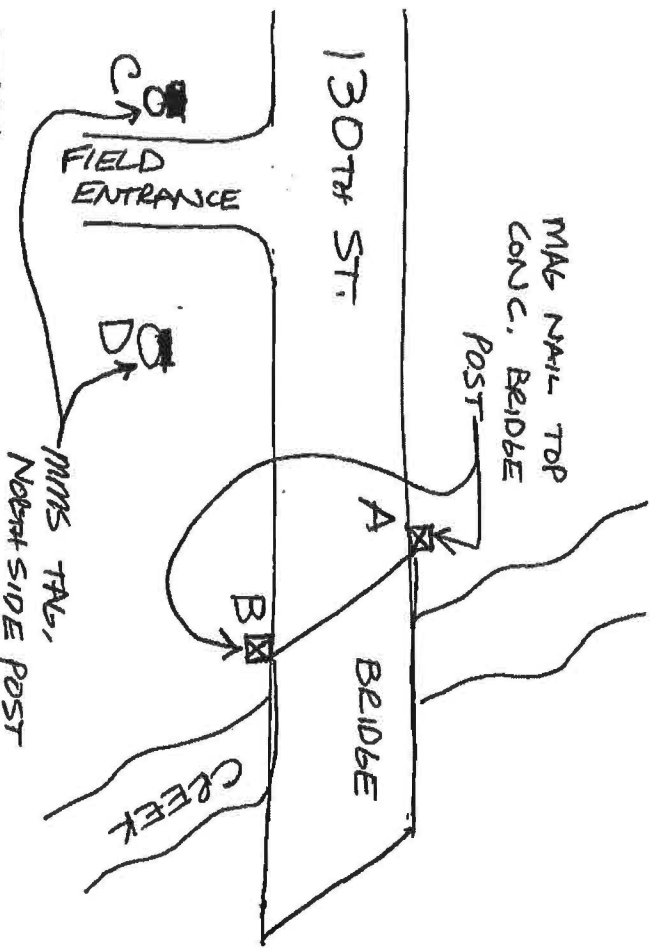
SW CORNER

Section 32
Township 85 N
Range 3 W

Distances:

A = 22.70'
B = 34.48'
C = 57.18'
D = 42.45'

MMS TAG, NORTH
SIDE POST Plan-View No Scale



Reason for corner tie: (indicated with check boxes)

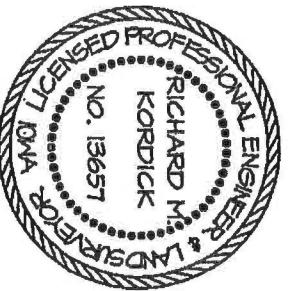
- ☒ A) There is no certificate for the corner on file with the recorder.
☐ B) Corner position differs from previously recorded certificate recorded in book , page
☐ C) Corner monument was replaced or modified.
☐ D) Reference ties in previously recorded certificate recorded in book , page are incorrect or missing.

Field search performed as follows: (indicated with check boxes)

- ☒ Field search was performed with a ☒ metal detector, ☐ probing, and ☒ excavation.
☐ Nothing was found.

County Engineer's Office ~~Old Corner Ties called for a~~ at this corner.
Plat in Recorded Office INST# 2014-2413 called for a FOUND 5/8" REBAR YELLOW CAP
at this corner. 15 B165
~~Corner TIE IN BEHIND~~ Office INST# 2016-3621 ~~PETTERVED~~ THIS CORNER.
at this corner.
Plat in Office BK - Page called for a
at this corner.
Plat in Office BK - Page called for a
at this corner.
Plat in Office BK - Page called for a
at this corner.

A 5/8" REBAR, 6" DEEP, WAS FOUND AND USED AS CORNER.



I hereby certify that this land surveying document was prepared and the related survey work was performed by me or under my direct personal supervision and that I am a duly licensed Professional Land Surveyor under the laws of the State of Iowa.

Richard M. Kordick 12-4-2025
Richard M. Kordick
License number 13657
date

My license renewal date is December 31, 2025.
Pages or sheets covered by this seal: 1 of 1

LEGEND:

- ☒ Section Corner as noted
☒ Power Pole
● 1/2" rebar set 4" high, tie
⊗ Set Mag nail in top of post, tie
--- Section line
--- Centerline
--- Existing Fence
() Recorded Dist.

Kordick Surveying
& Engineering
689 185th Street
Tipton, Iowa 52772
563-432-6424

U.S. Public Land
Survey Corner Certificate
JONES County

Field BK 25034
Date 12-4-25
Job No. 25034
Sheet 1 of 1

Instrument #: 2016-3621
12/21/2016 10:10:13 AM Total Pages: 1
ZSC SECTION CORNER CERTIFICATE
Recording Fee: \$7.00 Transfer Tax: \$0
Sheri L. Jones, Recorder, Jones County Iowa



RETURN TO & PREPARED BY: LEO P. BONIFAZI SCHNOOR-BONIFAZI ENGINEERING & SURVEYING LC, 431 FIFTH AVENUE SW, CEDAR RAPIDS, IA 52404 319-298-8888

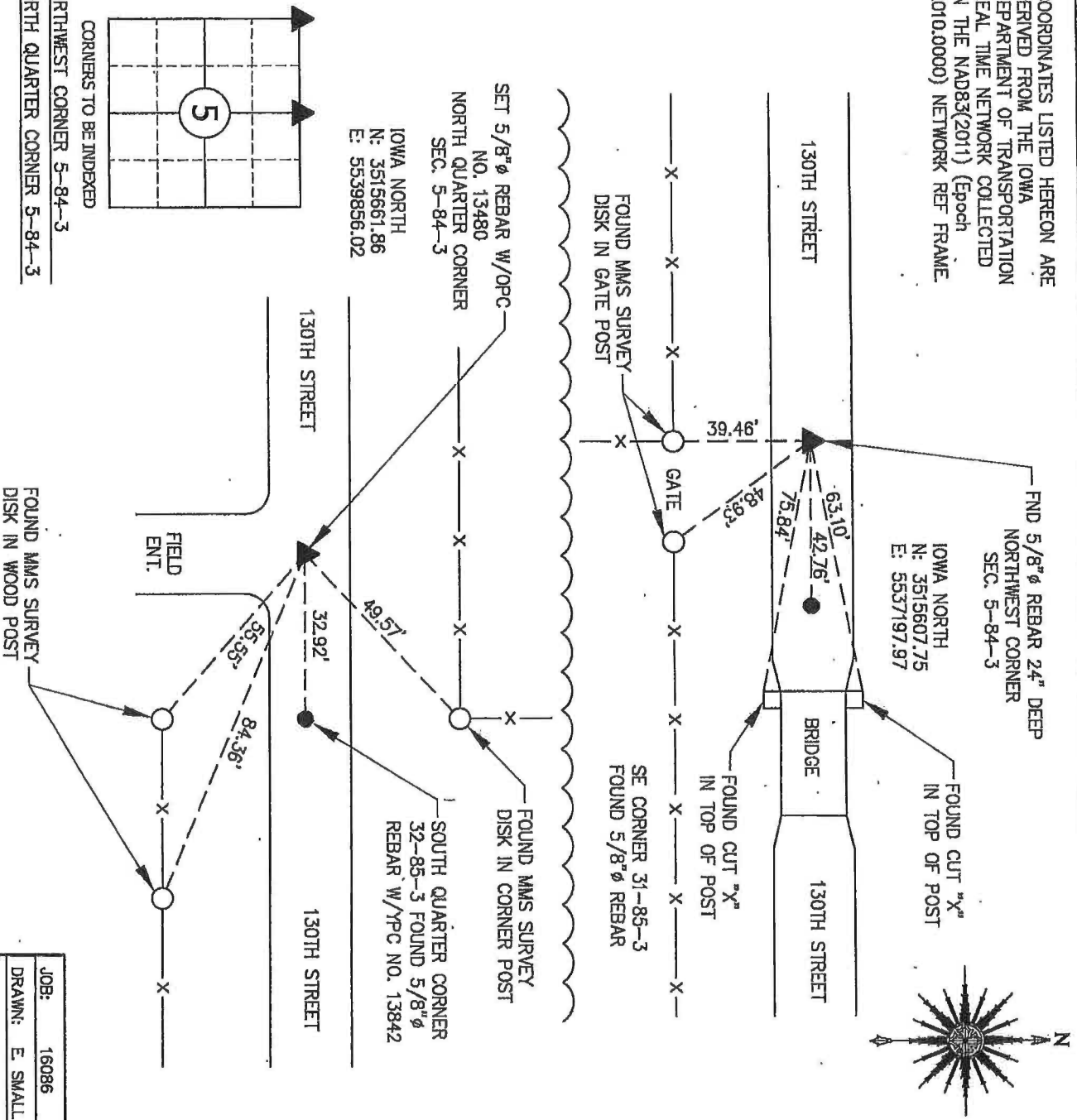
UNITED STATES PUBLIC LAND SURVEY CORNER CERTIFICATE

Land Survey Monuments Situated in Section 5, Township 84 North, Range 3 West of the Fifth Principal Meridian, JONES County, Iowa.
Reason for filing: ☒ a. No certificate of record found. ☐ b. Monument or ties found differ from record. ☒ c. Replaced section corner.

NORTHWEST CORNER - NO CERTIFIED CORNER THE FOUND AT THE COUNTY RECORDER'S OFFICE. FOUND A 5/8" Ø REBAR 24" DEEP IN 130TH STREET AT LOGICAL CALCULATED LOCATION. ACCEPTED FOUND REBAR AS THE SECTION CORNER SINCE DISTANCES TO ADJACENT CORNERS ARE WITHIN REASON AND NO OTHER MONUMENTS FOUND IN THE AREA. SET TIES AS SHOWN BELOW.

NORTH QUARTER CORNER - NO CERTIFIED CORNER THE FOUND AT THE COUNTY RECORDER'S OFFICE. SET 5/8" Ø REBAR AT INTERSECTION OF LINE BETWEEN SOUTH QUARTER CORNER OF SECTION 32 AND NORTHWEST CORNER OF SECTION 5 WITH NEW BEARING OF THE NORTH-SOUTH FENCE RUNNING ON HALF SECTION LINE. POSITION IS 2' OFF MID SPLIT. ACCEPTED FENCE AS NORTH-SOUTH FENCE AS HALF SECTION LINE.

COORDINATES LISTED HEREON ARE DERIVED FROM THE IOWA DEPARTMENT OF TRANSPORTATION REAL TIME NETWORK COLLECTED IN THE NAD83(2011) (Epoch 2010.0000) NETWORK REF FRAME.



CORNERS TO BE INDEXED

NORTHWEST CORNER 5-84-3

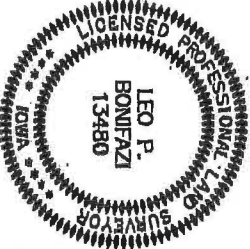
NORTH QUARTER CORNER 5-84-3

I HEREBY CERTIFY THAT THIS LAND SURVEYING DOCUMENT WAS PREPARED AND THE RELATED SURVEY WORK WAS PERFORMED BY ME OR UNDER MY DIRECT PERSONAL SUPERVISION AND THAT I AM A DULY LICENSED PROFESSIONAL LAND SURVEYOR UNDER THE LAWS OF THE STATE OF IOWA.

SIGNATURE: Leo P. Bonifazi DATE: 12-20-16

LEO P. BONIFAZI
LICENSE NO. 13480
SHEETS COVERED BY THIS SEAL: THIS SHEET ONLY

MY LICENSE RENEWAL DATE IS DECEMBER 31, 2017



SCHNOOR-BONIFAZI
ENGINEERING & SURVEYING, LC
431 FIFTH AVENUE SW
CEDAR RAPIDS, IA 52404
(319) 298-8888 (PHONE)
s-b-engineering.com



JOB:	16086
DRAWN:	E. SMALL
NOT TO SCALE	
DATE:	12/20/2016