

FEEBOOK: 2006 3703 10/03/2006 10:53 A.M.
 REC FEES: \$7.00 PAGES: 1

MARIE KRUTZFIELD, RECORDER
 JONES COUNTY, IOWA

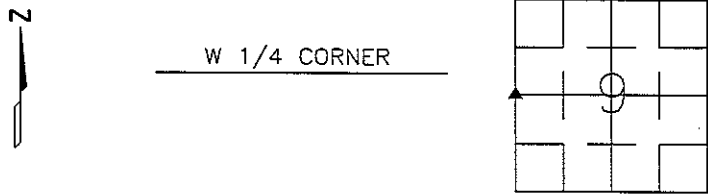
PREPARED BY

STEPHEN MICHAEL BRAIN, BRAIN ENGINEERING, INC., 1540 MIDLAND COURT NE, CEDAR RAPIDS, IOWA PH. (319) 294-9424

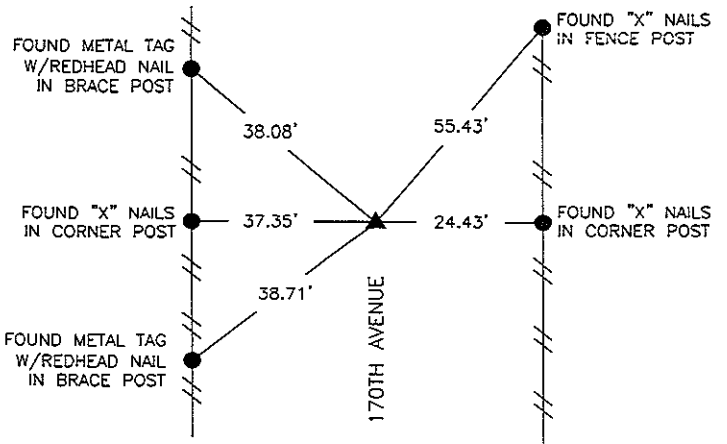
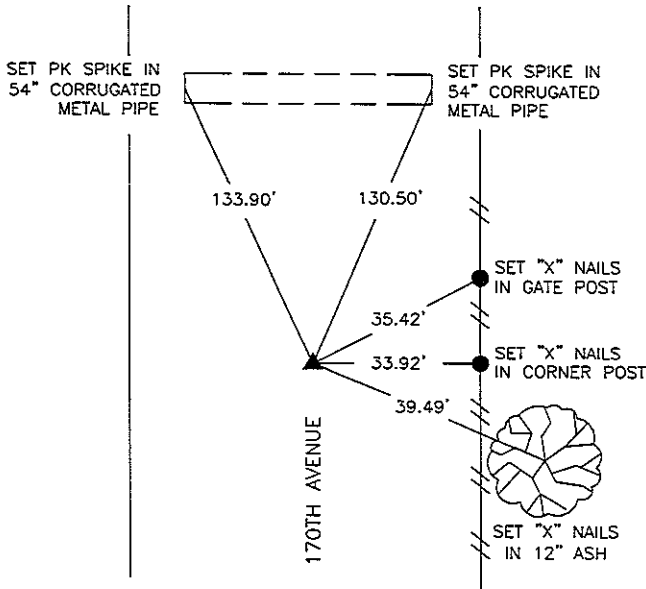
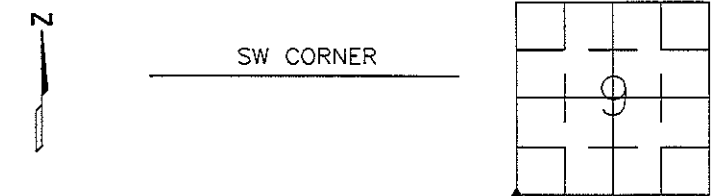
UNITED STATES PUBLIC LAND SURVEY CORNER CERTIFICATE

LAND SURVEY MONUMENTS SITUATED IN SECTION 9, TOWNSHIP 84 NORTH
 RANGE 3 WEST OF THE 5TH P.M., _____ JONES _____ COUNTY, IOWA.

NO SCALE

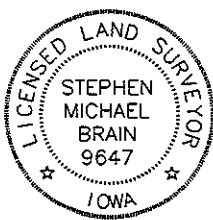


NO SCALE



PREVIOUSLY RECORDED IN BOOK _____ PAGE _____
 MONUMENT DESCRIPTION AND HOW ESTABLISHED _____
 FOUND 1/2" REBAR 4" BELOW SURFACE USING JONES
 COUNTY ENGINEERING DEPARTMENT TIES.

PREVIOUSLY RECORDED IN BOOK _____ PAGE _____
 MONUMENT DESCRIPTION AND HOW ESTABLISHED _____
 FOUND 5/8" REBAR 4" BELOW SURFACE USING JONES
 COUNTY ENGINEERING DEPARTMENT TIES.



I hereby certify that this land surveying document and the related survey work was performed by me or under my direct personal supervision and that I am a duly licensed Land Surveyor under the laws of the State of Iowa.
 Signed _____ Date 9/29/06

Stephen Michael Brain, L.S.
 My License Renewal Date Is December 31, 2006
 License Number 9647
 Pages or sheets covered by this seal: 1/1

- A.THERE IS NO CERTIFICATE FOR THE CORNER ON FILE WITH THE RECORDER OF THE COUNTY IN WHICH THE CORNER IS LOCATED
- B.THE SURVEYOR IN RESPONSIBLE CHARGE OF THE LAND SURVEYING ACCEPTS A CORNER POSITION WHICH DIFFERS FROM THAT SHOWN IN THE PUBLIC RECORDS OF THE COUNTY IN WHICH THE CORNER IS LOCATED.
- C.THE CORNER MONUMENT IS REPLACED OR MODIFIED IN ANY WAY.
- D.THE REFERENCE TIES REFERRED TO IN AN EXISTING PUBLIC RECORD ARE NOT CORRECT.

CORNERS TO BE INDEXED

CORNER	SECTION	TOWNSHIP	RANGE
W 1/4 CORNER	9	T84N	R 3 W
SW CORNER	9	T84N	R 3 W

BRAIN ENGINEERING, INC.
 1540 MIDLAND COURT NE
 CEDAR RAPIDS, IOWA 52402
 (319) 294-9424

222006-10
 VSM

THIS IS NOT A CERTIFICATION

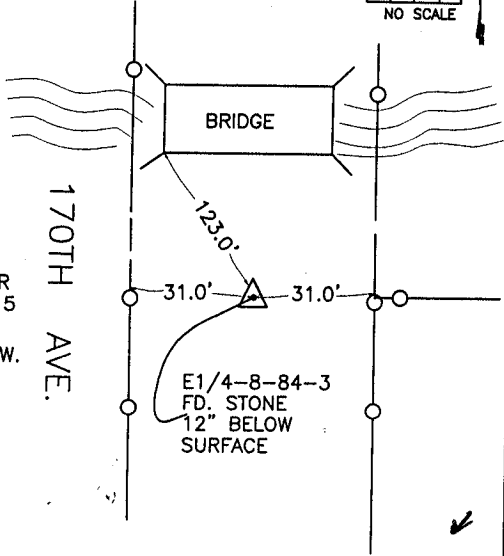
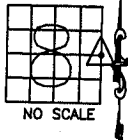
JONES COUNTY ENGINEER'S OFFICE, 19501 HWY. 64, ANAMOSA, IOWA, 52205 (319)462-3785

UNITED STATES PUBLIC LAND SURVEY CORNER CERTIFICATE

LAND SURVEY MONUMENTS SITUATED IN SECTION 8, TOWNSHIP 84
NORTH, RANGE 3 WEST OF THE 5TH P.M., JONES COUNTY, IOWA

CORNERS TO BE INDEXED

CORNER SECTION TOWNSHIP RANGE
EAST-QUARTER 8 84N 3W
OFFICE FILE NO.
84308o_010104.TIF



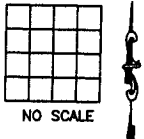
REF:
JONES COUNTY CORNER
STONE BOOK 1, PAGE 5
(NOT DATE)
COUNTY SURVEY CREW.

1626

PREVIOUSLY RECORDED IN BOOK _____, PAGE _____
MONUMENT DESCRIPTION AND HOW ESTABLISHED FOUND
24"x24"x8" STONE 12" BELOW SURFACE IN AREA AS SHOWN.
SET REFERENCE POINTS AND TIED OUT AS INDICATED. EAST QUARTER
CORNER SECTION 8, TOWNSHIP 84 NORTH, RANGE 3 WEST OF THE
5TH PRINCIPAL MERIDIAN, JONES COUNTY, IOWA.

CORNERS TO BE INDEXED

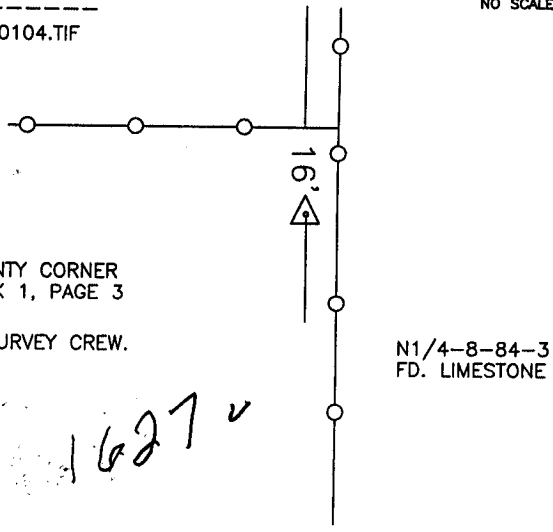
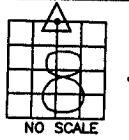
CORNER SECTION TOWNSHIP RANGE
OFFICE FILE NO.



PREVIOUSLY RECORDED IN BOOK _____, PAGE _____
MONUMENT DESCRIPTION AND HOW ESTABLISHED _____

CORNERS TO BE INDEXED

CORNER SECTION TOWNSHIP RANGE
NORTH-QUARTER 8 84N 3W
OFFICE FILE NO.
84308c_010104.TIF



REF:
JONES COUNTY CORNER
STONE BOOK 1, PAGE 3
(NOT DATE)
COUNTY SURVEY CREW.

N1/4-8-84-3
FD. LIMESTONE

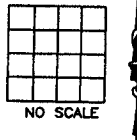
1627

PREVIOUSLY RECORDED IN BOOK _____, PAGE _____
MONUMENT DESCRIPTION AND HOW ESTABLISHED _____

FOUND 18"x12"x12" LIMESTONE AT SECTION CORNER. TIES
AS INDICATED. NORTH QUARTER CORNER SECTION 8, TOWNSHIP
84 NORTH, RANGE 3 WEST OF THE 5TH PRINCIPAL MERIDIAN,
JONES COUNTY, IOWA.

CORNERS TO BE INDEXED

CORNER SECTION TOWNSHIP RANGE
OFFICE FILE NO.



PREVIOUSLY RECORDED IN BOOK _____, PAGE _____
MONUMENT DESCRIPTION AND HOW ESTABLISHED _____

~~I hereby declare that this plat, survey or report was made by me or under my direct personal supervision and that I am a duly registered Land Surveyor under the laws of the State of Iowa.~~

Signed: _____

SEAL

JONES COUNTY
ENGINEER'S OFFICE

19501 HWY. 64,
ANAMOSA, IOWA,
52205 (319)462-3785

E