

# THIS IS NOT A CERTIFICATION

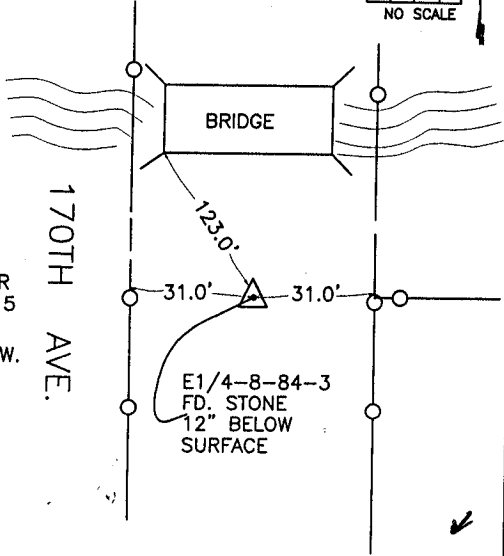
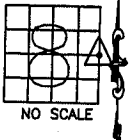
JONES COUNTY ENGINEER'S OFFICE, 19501 HWY. 64, ANAMOSA, IOWA, 52205 (319)462-3785

## UNITED STATES PUBLIC LAND SURVEY CORNER CERTIFICATE

LAND SURVEY MONUMENTS SITUATED IN SECTION 8, TOWNSHIP 84  
NORTH, RANGE 3 WEST OF THE 5TH P.M., JONES COUNTY, IOWA

### CORNERS TO BE INDEXED

CORNER SECTION TOWNSHIP RANGE  
EAST-QUARTER 8 84N 3W  
OFFICE FILE NO.  
84308o\_010104.TIF



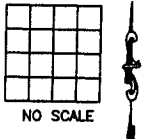
REF:  
JONES COUNTY CORNER  
STONE BOOK 1, PAGE 5  
(NOT DATE)  
COUNTY SURVEY CREW.

1626

PREVIOUSLY RECORDED IN BOOK \_\_\_\_\_, PAGE \_\_\_\_\_  
MONUMENT DESCRIPTION AND HOW ESTABLISHED FOUND  
24"x24"x8" STONE 12" BELOW SURFACE IN AREA AS SHOWN.  
SET REFERENCE POINTS AND TIED OUT AS INDICATED. EAST QUARTER  
CORNER SECTION 8, TOWNSHIP 84 NORTH, RANGE 3 WEST OF THE  
5TH PRINCIPAL MERIDIAN, JONES COUNTY, IOWA.

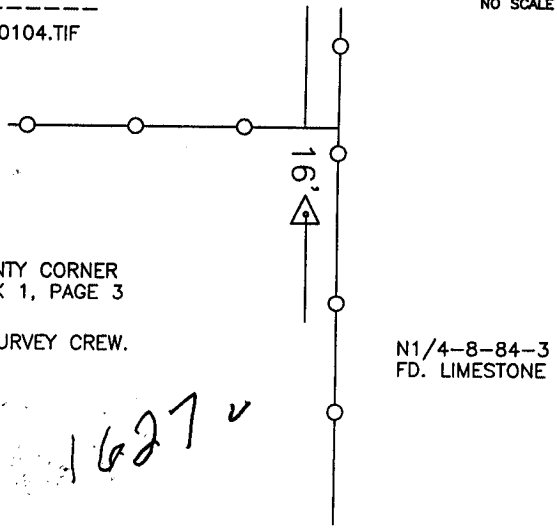
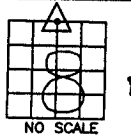
### CORNERS TO BE INDEXED

CORNER SECTION TOWNSHIP RANGE  
OFFICE FILE NO.



### CORNERS TO BE INDEXED

CORNER SECTION TOWNSHIP RANGE  
NORTH-QUARTER 8 84N 3W  
OFFICE FILE NO.  
84308c\_010104.TIF



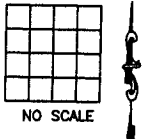
REF:  
JONES COUNTY CORNER  
STONE BOOK 1, PAGE 3  
(NOT DATE)  
COUNTY SURVEY CREW.

1627

PREVIOUSLY RECORDED IN BOOK \_\_\_\_\_, PAGE \_\_\_\_\_  
MONUMENT DESCRIPTION AND HOW ESTABLISHED  
FOUND 18"x12"x12" LIMESTONE AT SECTION CORNER. TIES  
AS INDICATED. NORTH QUARTER CORNER SECTION 8, TOWNSHIP  
84 NORTH, RANGE 3 WEST OF THE 5TH PRINCIPAL MERIDIAN,  
JONES COUNTY, IOWA.

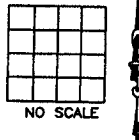
### CORNERS TO BE INDEXED

CORNER SECTION TOWNSHIP RANGE  
OFFICE FILE NO.



### CORNERS TO BE INDEXED

CORNER SECTION TOWNSHIP RANGE  
OFFICE FILE NO.



PREVIOUSLY RECORDED IN BOOK \_\_\_\_\_, PAGE \_\_\_\_\_  
MONUMENT DESCRIPTION AND HOW ESTABLISHED \_\_\_\_\_

PREVIOUSLY RECORDED IN BOOK \_\_\_\_\_, PAGE \_\_\_\_\_  
MONUMENT DESCRIPTION AND HOW ESTABLISHED \_\_\_\_\_

~~I hereby declare that this plat, survey or report was made by me or under my direct personal supervision and that I am a duly registered Land Surveyor under the laws of the State of Iowa.~~

Signed: \_\_\_\_\_

SEAL

JONES COUNTY  
ENGINEER'S OFFICE

19501 HWY. 64,  
ANAMOSA, IOWA,  
52205 (319)462-3785

E