

Instrument #: 2016-3619  
 12/21/2016 10:10:13 AM Total Pages: 1  
 ZSC SECTION CORNER CERTIFICATE  
 Recording Fee: \$7.00 Transfer Tax: \$0  
 Sheri L. Jones, Recorder, Jones County Iowa



RETURN TO &  
 PREPARED BY: LEO P. BONIFAZI SCHNOOR-BONIFAZI ENGINEERING & SURVEYING LC, 431 FIFTH AVENUE SW, CEDAR RAPIDS, IA 52404 319-298-8888

**UNITED STATES PUBLIC LAND SURVEY CORNER CERTIFICATE**

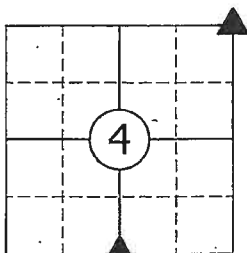
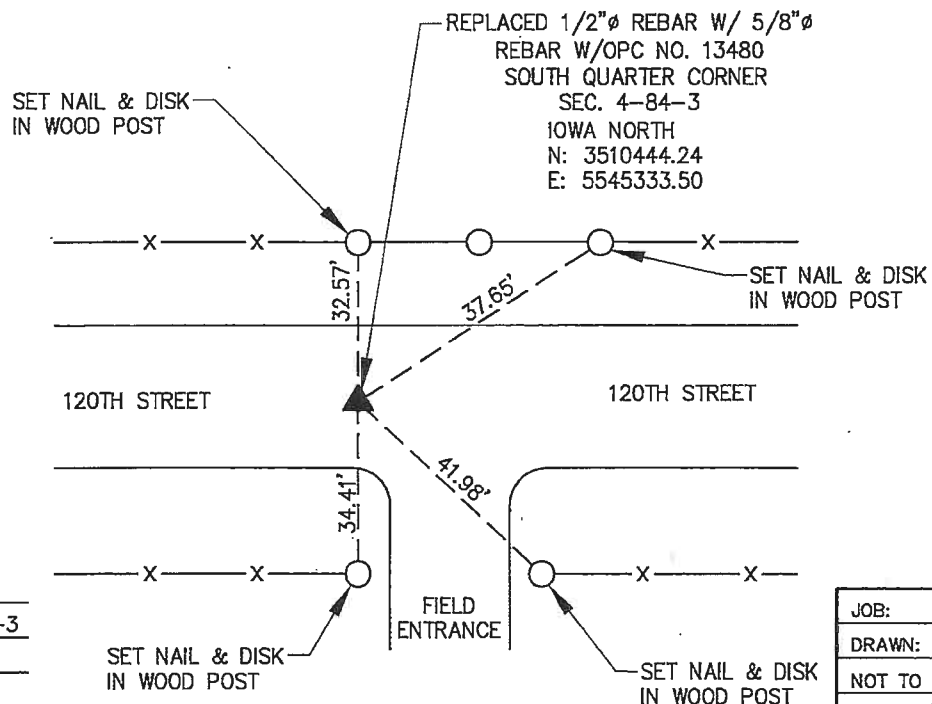
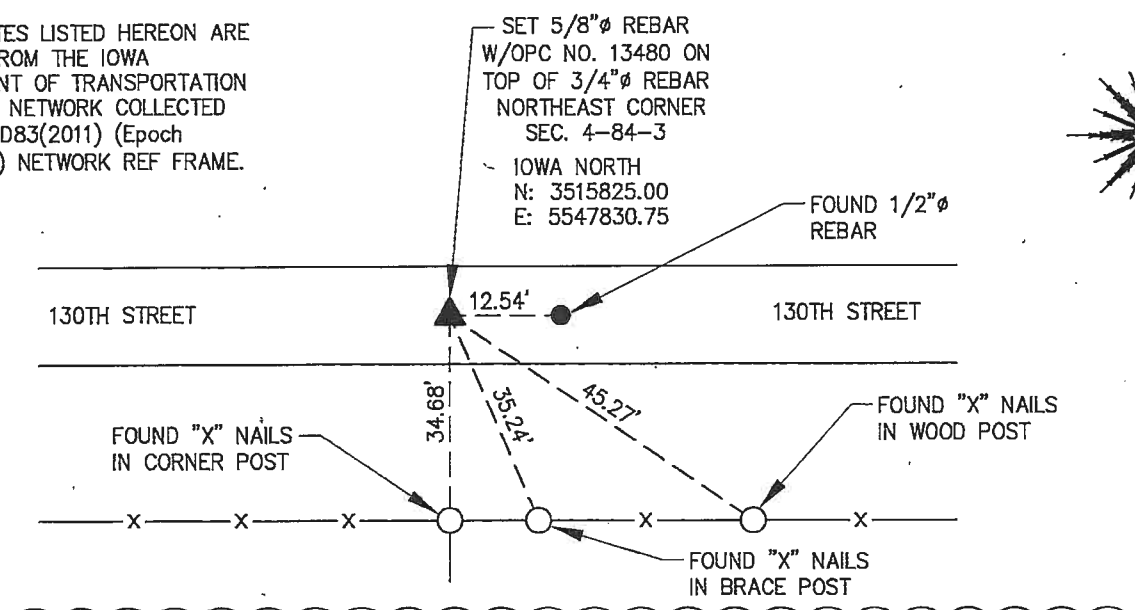
Land Survey Monuments Situated in Section 4, Township 84 North, Range 3 West of the Fifth Principal Meridian, JONES County, Iowa.

Reason for filing:  a. No certificate of record found.  b. Monument or ties found differ from record.  c. Replaced section corner.

**NORTHEAST CORNER** - NO CERTIFIED CORNER TIE FOUND AT THE COUNTY RECORDER'S OFFICE. FOUND A 3/4"Ø REBAR 28.00" DEEP IN 130TH STREET AT LOGICAL CALCULATED LOCATION. SET 5/8"Ø REBAR WITH ORANGE CAP NO. 13480 ON TOP OF 3/4"Ø REBAR IN LINE WITH THE NORTH-SOUTH FENCE. ACCEPTED LOCATION AS SECTION CORNER SINCE DISTANCES TO ADJACENT CORNERS ARE WITHIN REASON SET. 4 TIES AS SHOWN BELOW. MONUMENT NOW A 5/8"Ø REBAR WITH ORANGE CAP NO. 13480.

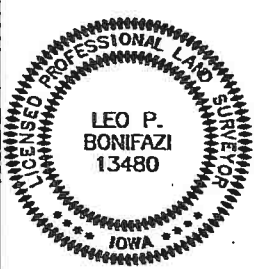
**SOUTH QUARTER CORNER** - NO CERTIFIED CORNER TIE FOUND AT THE COUNTY RECORDER'S OFFICE. FOUND A 1/2"Ø REBAR 5" DEEP IN 120TH STREET AT LOGICAL CALCULATED LOCATION. ACCEPTED LOCATION AS SECTION CORNER SINCE DISTANCES TO ADJACENT CORNERS ARE WITHIN REASON AND NO OTHER MONUMENTS FOUND IN THE AREA. REPLACED 1/2"Ø REBAR WITH 5/8"Ø REBAR WITH ORANGE CAP NO. 13480. SET 4 TIES AS SHOWN BELOW. MONUMENT NOW A 5/8"Ø REBAR WITH ORANGE CAP NO. 13480.

COORDINATES LISTED HEREON ARE DERIVED FROM THE IOWA DEPARTMENT OF TRANSPORTATION REAL TIME NETWORK COLLECTED IN THE NAD83(2011) (Epoch 2010.0000) NETWORK REF FRAME.



CORNERS TO BE INDEXED  
 NORTHEAST CORNER 4-84-3  
 SOUTH QUARTER CORNER 4-84-3

JOB:	16086
DRAWN:	E. SMALL
NOT TO SCALE	
DATE:	12/20/2016



I HEREBY CERTIFY THAT THIS LAND SURVEYING DOCUMENT WAS PREPARED AND THE RELATED SURVEY WORK WAS PERFORMED BY ME OR UNDER MY DIRECT PERSONAL SUPERVISION AND THAT I AM A DULY LICENSED PROFESSIONAL LAND SURVEYOR UNDER THE LAWS OF THE STATE OF IOWA.

SIGNATURE: *Leo P. Bonifazi* DATE: 12-20-16  
 LEO P. BONIFAZI  
 LICENSE NO. 13480  
 SHEETS COVERED BY THIS SEAL: THIS SHEET ONLY  
 MY LICENSE RENEWAL DATE IS DECEMBER 31, 2017

SCHNOOR-BONIFAZI ENGINEERING & SURVEYING, LC  
 431 FIFTH AVENUE SW  
 CEDAR RAPIDS, IA 52404  
 (319) 298-8888 (PHONE)  
 s-b-engineering.com

**Schnoor Bonifazi**  
 Engineering & Surveying

# THIS IS NOT A CERTIFICATION

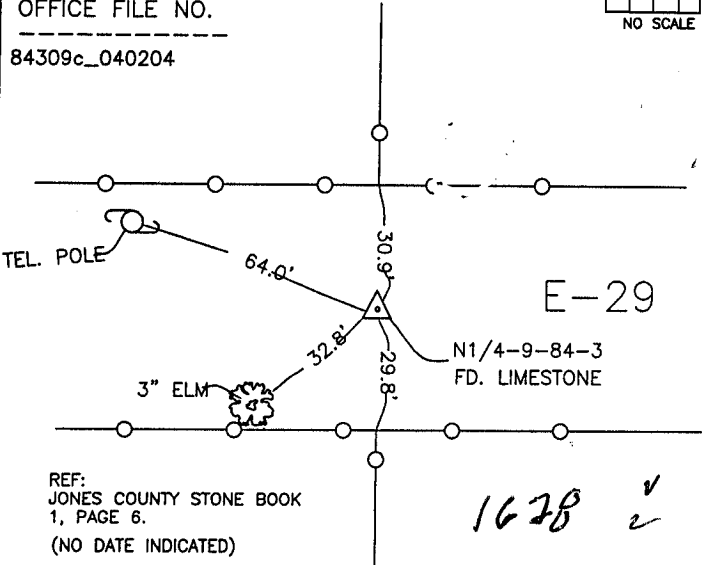
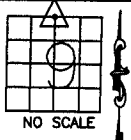
JONES COUNTY ENGINEER'S OFFICE, 19501 HWY. 64, ANAMOSA, IOWA, 52205 (319)462-3785

## UNITED STATES PUBLIC LAND SURVEY CORNER CERTIFICATE

LAND SURVEY MONUMENTS SITUATED IN SECTION 9, TOWNSHIP 84  
NORTH, RANGE 3 WEST OF THE 5TH P.M., JONES COUNTY, IOWA

### CORNERS TO BE INDEXED

CORNER SECTION TOWNSHIP RANGE  
N-QUARTER 9 84N 3W  
OFFICE FILE NO.  
84309c\_040204



E-29

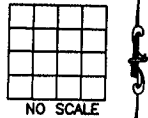
1628 ✓

REF:  
JONES COUNTY STONE BOOK  
1, PAGE 6.  
(NO DATE INDICATED)

PREVIOUSLY RECORDED IN BOOK \_\_\_\_\_, PAGE \_\_\_\_\_  
MONUMENT DESCRIPTION AND HOW ESTABLISHED FOUND  
8"X6"X6" LIMESTONE ON END IN CENTER OF ROAD 18" BELOW SURFACE,  
NORTH QUARTER CORNER OF SECTION 9, TOWNSHIP 84 NORTH, RANGE 3 WEST  
OF THE 5TH PRINCIPAL MERIDIAN, JONES COUNTY, IOWA. SET REFERENCE  
POINTS AND TIED OUT AS INDICATED.

### CORNERS TO BE INDEXED

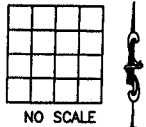
CORNER SECTION TOWNSHIP RANGE  
OFFICE FILE NO.



PREVIOUSLY RECORDED IN BOOK \_\_\_\_\_, PAGE \_\_\_\_\_  
MONUMENT DESCRIPTION AND HOW ESTABLISHED \_\_\_\_\_

### CORNERS TO BE INDEXED

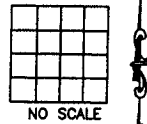
CORNER SECTION TOWNSHIP RANGE  
OFFICE FILE NO.



PREVIOUSLY RECORDED IN BOOK \_\_\_\_\_, PAGE \_\_\_\_\_  
MONUMENT DESCRIPTION AND HOW ESTABLISHED \_\_\_\_\_

### CORNERS TO BE INDEXED

CORNER SECTION TOWNSHIP RANGE  
OFFICE FILE NO.



PREVIOUSLY RECORDED IN BOOK \_\_\_\_\_, PAGE \_\_\_\_\_  
MONUMENT DESCRIPTION AND HOW ESTABLISHED \_\_\_\_\_

~~I hereby declare that this plat, survey or report was made by me or under my direct personal supervision and that I am a duly registered Land Surveyor under the laws of the State of Iowa.~~

Signed: \_\_\_\_\_

SEAL

JONES COUNTY  
ENGINEER'S OFFICE

19501 HWY. 64,  
ANAMOSA, IOWA,  
52205 (319)462-3785

F