

2002 0744

FILED  
RECORDERS OFFICE  
JONES COUNTY IOWA

02 FEB 27 AM 8:55

MARIE KRUTZFIELD  
RECORDER NO FEE

J.D. Tjepkes, LS. JONES COUNTY ENGINEER'S OFFICE, 19501 HWY. 64, ANAMOSA, IOWA, 52205 (319)462-3785

# UNITED STATES PUBLIC LAND SURVEY CORNER CERTIFICATE

LAND SURVEY MONUMENTS SITUATED IN SECTION 11, TOWNSHIP 86  
NORTH, RANGE 3 WEST OF THE 5TH P.M., JONES COUNTY, IOWA

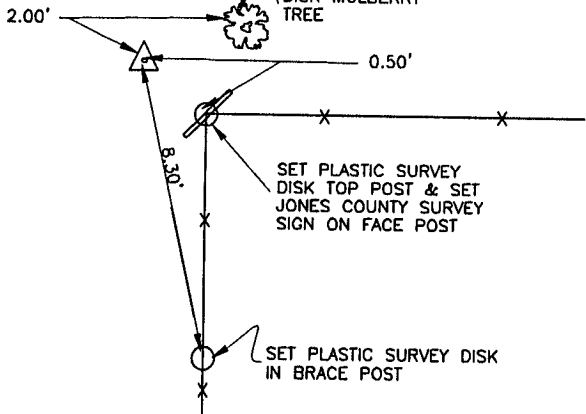
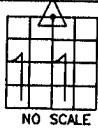
### CORNERS TO BE INDEXED

CORNER SECTION TOWNSHIP RANGE  
N-1/4 11 86N 3W

OFFICE FILE NO.

86311c\_021502

02/21/02



PLASTIC SURVEY  
DISK MULBERRY  
TREE

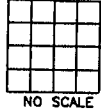
SET PLASTIC SURVEY  
DISK TOP POST & SET  
JONES COUNTY SURVEY  
SIGN ON FACE POST

SET PLASTIC SURVEY DISK  
IN BRACE POST

### CORNERS TO BE INDEXED

CORNER SECTION TOWNSHIP RANGE

OFFICE FILE NO.

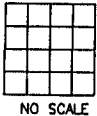


PREVIOUSLY RECORDED IN BOOK \_\_\_\_\_, PAGE \_\_\_\_\_  
MONUMENT DESCRIPTION AND HOW ESTABLISHED \_\_\_\_\_

### CORNERS TO BE INDEXED

CORNER SECTION TOWNSHIP RANGE

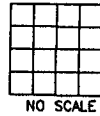
OFFICE FILE NO.



### CORNERS TO BE INDEXED

CORNER SECTION TOWNSHIP RANGE

OFFICE FILE NO.



PREVIOUSLY RECORDED IN BOOK \_\_\_\_\_, PAGE \_\_\_\_\_  
MONUMENT DESCRIPTION AND HOW ESTABLISHED \_\_\_\_\_

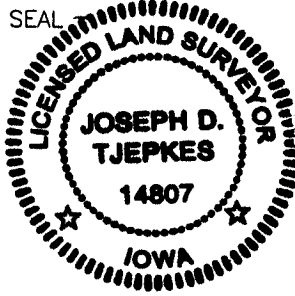
PREVIOUSLY RECORDED IN BOOK \_\_\_\_\_, PAGE \_\_\_\_\_  
MONUMENT DESCRIPTION AND HOW ESTABLISHED \_\_\_\_\_

I hereby declare that this plat, survey or report was made by me or under my direct personal supervision and that I am a duly registered Land Surveyor under the laws of the State of Iowa.

Signed:

*Joseph D. Tjepkes* 2-21-02

Joseph D. Tjepkes L.S. Iowa Reg. No. 14807  
My Registration Renewal Date is December 31, 2002



J.D. Tjepkes LS 14807  
JONES COUNTY  
ENGINEER'S OFFICE

19501 HWY. 64,  
ANAMOSA, IOWA,  
52205 (319)462-3785