

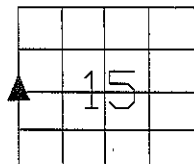
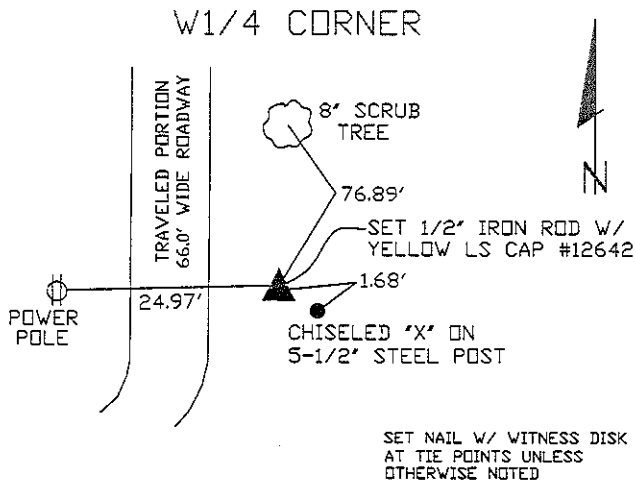
**UNITED STATES PUBLIC LAND SURVEY CORNER CERTIFICATE**

Land Survey Monuments situated in Section 15, Township 86N, Range 3W, of the Fifth Principal Meridian, Jones County, Iowa. Previously recorded in N/A in the Office of the County Recorder

Monument Description and Remarks: (No Corner Certificates found at the County Recorders Office)

W1/4 CORNER - SET 1/2" IRON ROD W/ YELLOW LS CAP #12642 - USED INFORMATION FROM PLAT LOCATED IN THE JONES COUNTY RECORDER'S OFFICE IN PLAT BOOK L, PAGE 34 TO SET THIS CORNER

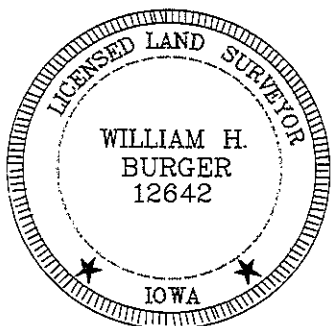
**PLAN VIEW**



SEC. 15 TWP. 86N RANGE 3W

CORNERS TO BE INDEXED

W1/4 CORNER 15 86N 3W



I hereby certify that this land surveying document was prepared and related survey work was performed by me or under my direct personal supervision and that I am a duly licensed Land Surveyor under the laws of the State of Iowa.

William H. Burger 12/9/09  
 William H. Burger Date

License number 12642

My license renewal date is December 31, 2010

Pages or Sheets covered by this seal: Sheet 1 of 1